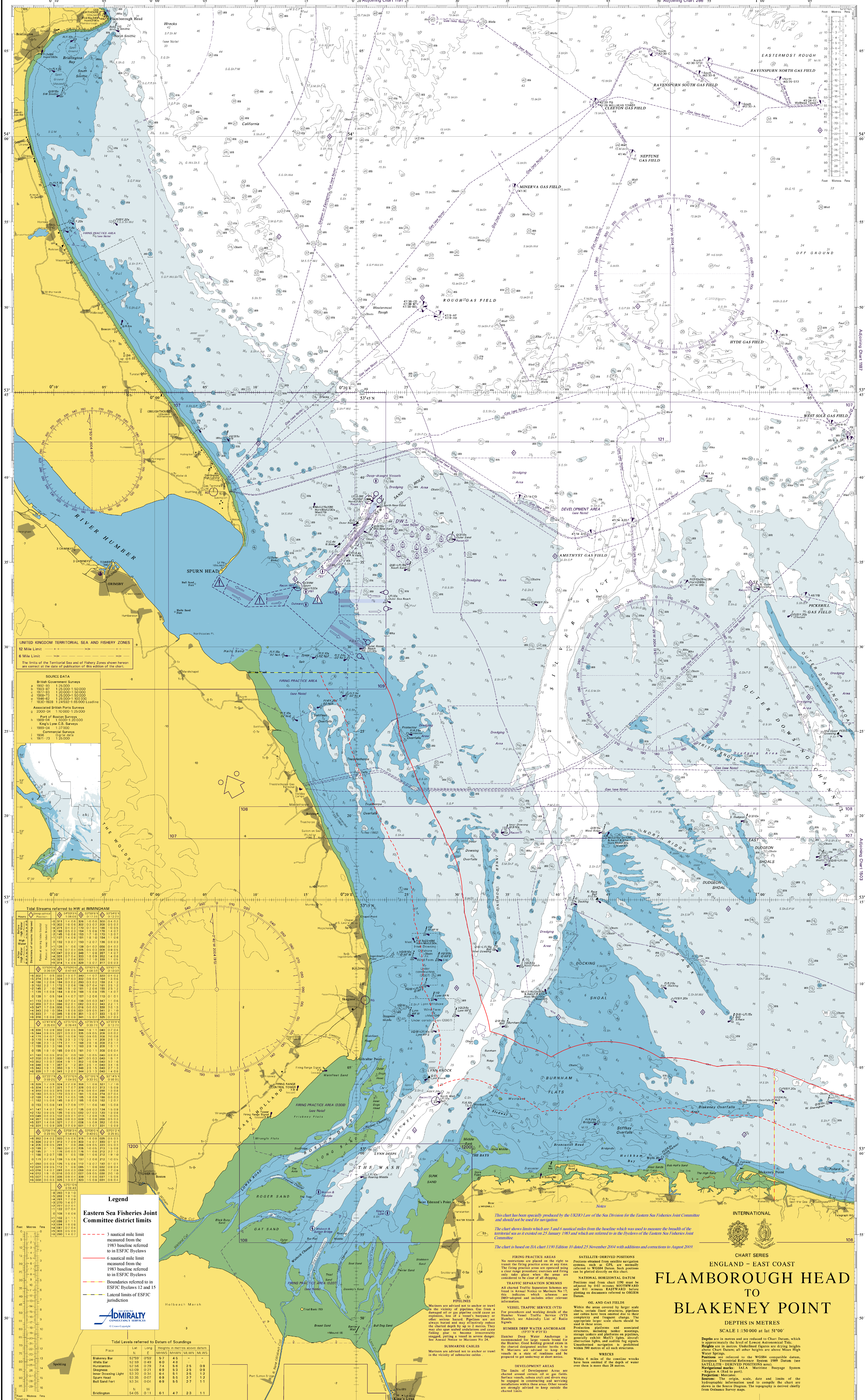


WGS84 POSITIONS can be plotted directly on this chart

ESFJC 1190A

© Crown Copyright 2004. All rights reserved. This publication is protected by Crown Copyright. It is derived from Crown Copyright information and from other information published by other organisations. No part of this material may be reproduced in any form or by any means, electronic, mechanical, photocopying, recording, or by any information storage and retrieval system, without the prior written permission of the copyright owner. The information contained herein is provided as a guide only. It is not to be used for navigation.

IMPORTANT! THE USE OF ADMIRALTY CHARTS AND RELATED ADMIRALTY PUBLICATIONS... ALWAYS USE THE LATEST SCALE CHART APPROPRIATE AND KEEP CHARTS AND PUBLICATIONS UPDATED



SOURCE DATA

a	1982-85	1:25000
b	1985-87	1:25000-1:50000
c	1987-88	1:25000-1:50000
d	1988-89	1:25000-1:50000
e	1989-90	1:25000-1:50000
f	1990-91	1:25000-1:50000
g	1991-92	1:25000-1:50000
h	1992-93	1:25000-1:50000
i	1993-94	1:25000-1:50000
j	1994-95	1:25000-1:50000
k	1995-96	1:25000-1:50000
l	1996-97	1:25000-1:50000
m	1997-98	1:25000-1:50000
n	1998-99	1:25000-1:50000
o	1999-00	1:25000-1:50000
p	2000-01	1:25000-1:50000
q	2001-02	1:25000-1:50000
r	2002-03	1:25000-1:50000
s	2003-04	1:25000-1:50000
t	2004-05	1:25000-1:50000

Tidal Streams referred to HW at IMMINGHAM

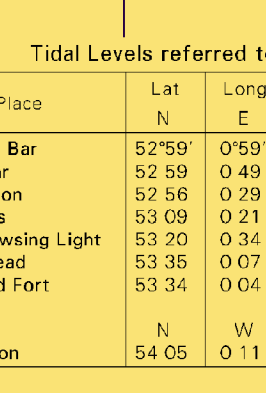
Time	Force	Direction
00:00	1.0	010
01:00	1.0	010
02:00	1.0	010
03:00	1.0	010
04:00	1.0	010
05:00	1.0	010
06:00	1.0	010
07:00	1.0	010
08:00	1.0	010
09:00	1.0	010
10:00	1.0	010
11:00	1.0	010
12:00	1.0	010
13:00	1.0	010
14:00	1.0	010
15:00	1.0	010
16:00	1.0	010
17:00	1.0	010
18:00	1.0	010
19:00	1.0	010
20:00	1.0	010
21:00	1.0	010
22:00	1.0	010
23:00	1.0	010
24:00	1.0	010

Tidal Levels referred to Datum of Soundings

Place	N	W	MINUS	NORTH	MILLS	MAWDS
Blakeney Bay	52.70	0.59	5.7	4.3	-	-
White Star	52.50	0.40	6.0	4.5	-	-
Humberston	52.58	0.29	7.4	5.6	2.5	0.9
Skope	52.09	0.21	6.8	5.2	2.5	0.9
Inner Dredging Light	53.20	0.32	6.4	5.2	2.5	1.2
Spurn Head	53.50	0.07	6.8	5.5	2.7	1.2
Bull Sand Fort	53.34	0.04	6.9	5.5	2.7	1.1
Brillington	54.05	0.11	6.1	4.7	2.3	1.1

Legend
Eastern Sea Fisheries Joint Committee district limits

- 3 nautical mile limit measured from the 1983 baseline referred to in ESFJC Bylaws
- 6 nautical mile limit measured from the 1983 baseline referred to in ESFJC Bylaws
- Boundaries referred to in ESFJC Bylaws 12 and 15
- Lateral limits of ESFJC jurisdiction



This chart has been specially produced by the UKHO Law of the Sea Division for the Eastern Sea Fisheries Joint Committee and should not be used for navigation.

The chart shows limits which are 3 and 6 nautical miles from the baseline which was used to measure the breadth of the territorial sea as it existed on 25 January 1983 and which are referred to in the Bylaws of the Eastern Sea Fisheries Joint Committee.

The chart is based on BA chart 1190 Edition 10 dated 25 November 2004 with additions and corrections to August 2009.

FIRING PRACTICE AREAS
No restrictions are placed on the right to transit the firing practice areas at any time. The firing practice areas are operated using a clear colour procedure and firing operations are considered to be clear of all shipping.

TRAFFIC SEPARATION SCHEMES
All change traffic separation schemes are listed in Annual Notice to Mariners No 17, which contains which schemes are IMO-adopted and includes other relevant information.

VESSEL TRAFFIC SERVICE (VTS)
The procedures and working details of the Humber Vessel Traffic Service (VTS) are published in the Admiralty List of Radio Signals. The appropriate larger scale charts should be used in these areas.

DEVELOPMENT AREAS
The limits of Development Areas are charted around certain oil or gas fields. Surface vessels, other than fishing boats, are engaged in constructing and servicing installations within these areas. Other vessels are strongly advised to keep outside the charted limits.

INTERNATIONAL CHART SERIES
ENGLAND - EAST COAST
FLAMBOROUGH HEAD TO BLAKENEY POINT
DEPTHS IN METRES
SCALE 1:50000 at Lat 54°0'