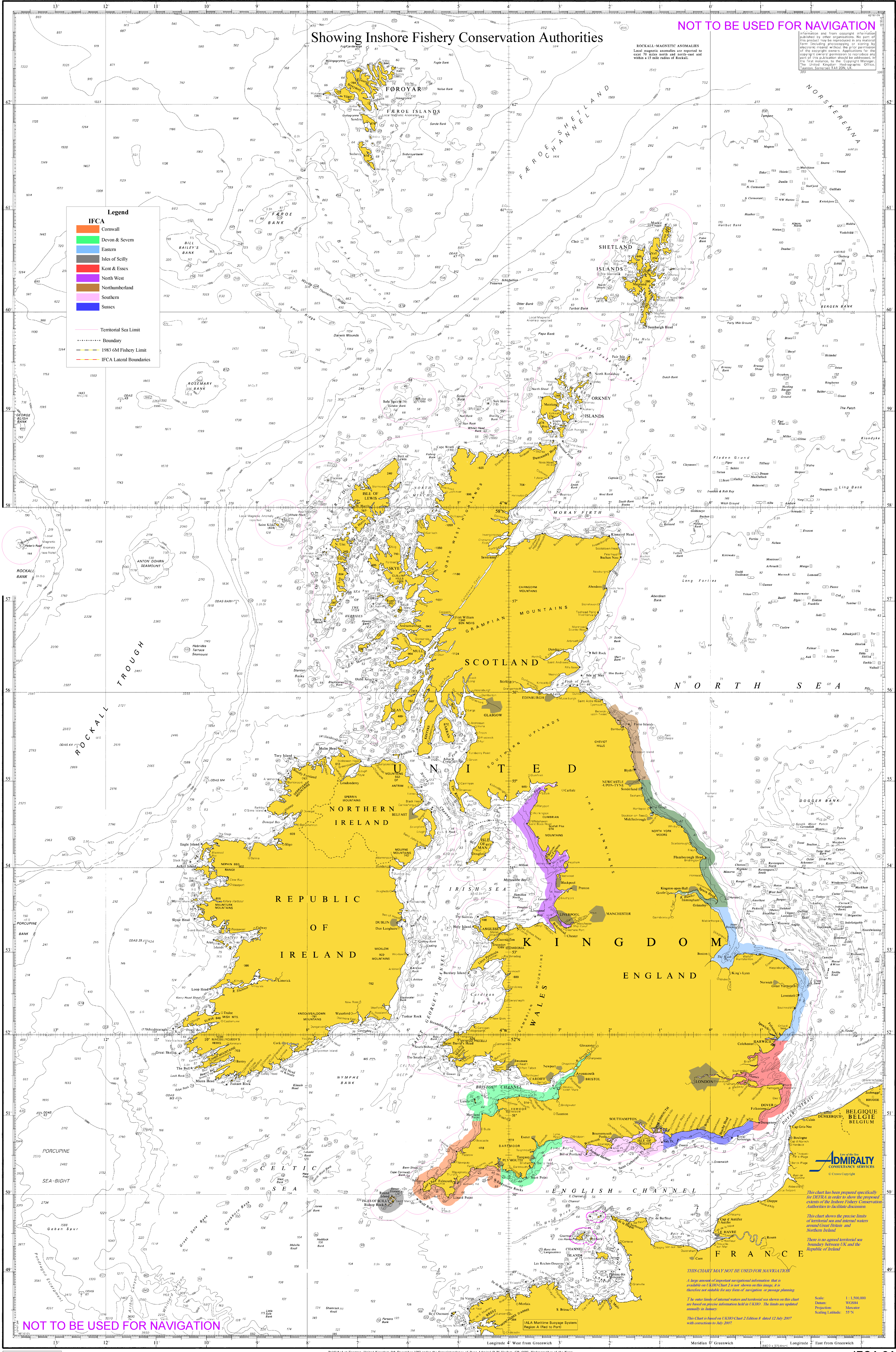


UNITED KINGDOM OF GREAT BRITAIN AND NORTHERN IRELAND with ISLE OF MAN AND THE CHANNEL ISLANDS
Territorial Sea Limits



IFCA 2A



NOT TO BE USED FOR NAVIGATION

Showing Inshore Fishery Conservation Authorities

ROCKALL-MAGNETIC ANOMALIES
Local magnetic anomalies are reported to exist 70 miles north and north-east and within a 15 mile radius of Rockall.

Information and from copyright information published by other organisations. No part of this product may be reproduced or stored in any form or by any means without the prior permission of the copyright owner. Applications for the copyright owner's permission to reproduce any part of this publication should be addressed to the United Kingdom Hydrographic Office, London, EC1A 3HH.

Legend

IFCA

- Cornwall
- Devon & Severn
- Eastern Isles of Scilly
- Kent & Essex
- North West
- Northumberland
- Southern
- Sussex

--- Territorial Sea Limit

--- Boundary

--- 1983 6M Fishery Limit

--- IFCA Lateral Boundaries

NOT TO BE USED FOR NAVIGATION

Admiralty
CONSULTANCY SERVICES

This chart has been prepared specifically for IFCA in order to show the proposed extent of the Inshore Fishery Conservation Authorities to facilitate discussion.

This chart shows the precise limits of territorial sea and internal waters around Great Britain and Northern Ireland.

There is no agreed territorial sea boundary between UK and the Republic of Ireland.

THIS CHART MAY NOT BE USED FOR NAVIGATION

A large amount of important navigational information that is available on UKHO Chart 2 is not shown on this map; it is therefore not suitable for any form of navigation or passage planning.

The outer limits of internal waters and territorial sea shown on this chart are based on physics information held in UKHO. The limits are updated annually in January.

This Chart is based on UKHO Chart 2 Edition 8 dated 12 July 2007 with corrections to July 2007.

Scale: 1:1,500,000
Datum: WGS84
Projection: Mercator
Sounding: Metres
Charting: 1978