

EASTERN INSHORE FISHERIES AND CONSERVATION AUTHORITY

MARINE AND COASTAL ACCESS ACT 2009

Protected Areas Byelaw

Regulatory Notice 1

The Authority of the Eastern Inshore Fisheries and Conservation District in exercise of the procedure set out in the Protected Areas Byelaw issues the following Regulatory Notice for that District.

Interpretation

In this regulatory notice: -

- a) 'Bottom towed gear' means any 'fishing gear' as defined in paragraph 1(e) of the Protected Areas Byelaw designed to be towed, dragged or pushed through the water whilst in contact with the seabed.
- b) 'Beam trawl' means a trawl net where the mouth or opening of the net is kept open by a beam, which is mounted at each end on guides or skids which travel along the seabed.

Protected Area: The Wash and North Norfolk Coast SAC

Characteristic for protection: Biogenic reef of the Sabellaria spinulosa feature

Management measure: Prohibition of fishing with bottom towed gear

Exemptions: A vessel engaged in fishing using a beam trawl is exempt from the requirement for fishing gear to be stored in such a way that use cannot readily be made of it for any purpose only if the following apply:

1. It is fishing up to the boundary of a Restricted Area and/or it will be fishing immediately upon leaving the Restricted Area; and
2. The beam(s) is hoisted so that it is clearly visible above the sea and that no part of the fishing gear is in contact with any part of the seabed whilst the vessel is within the Restricted Area

Restricted Area: Areas A, B, C, D, E, F, G, H and I as per the attached chart and associated coordinates.

Commencement date: 16th May 2014

Latest review date: 31st March 2017

Expiry date: Not applicable

Note: Coordinates are shown in decimal degrees for reference purposes only. Any enforcement of this Regulatory Notice will be based upon the coordinates expressed as degrees and decimal minutes.

I hereby certify that the above Regulatory Notice was made by Eastern Inshore Fisheries and Conservation Authority at their meeting on 18th September 2013.

The said Regulatory Notice comes into effect on 16th May 2014

Philip Haslam

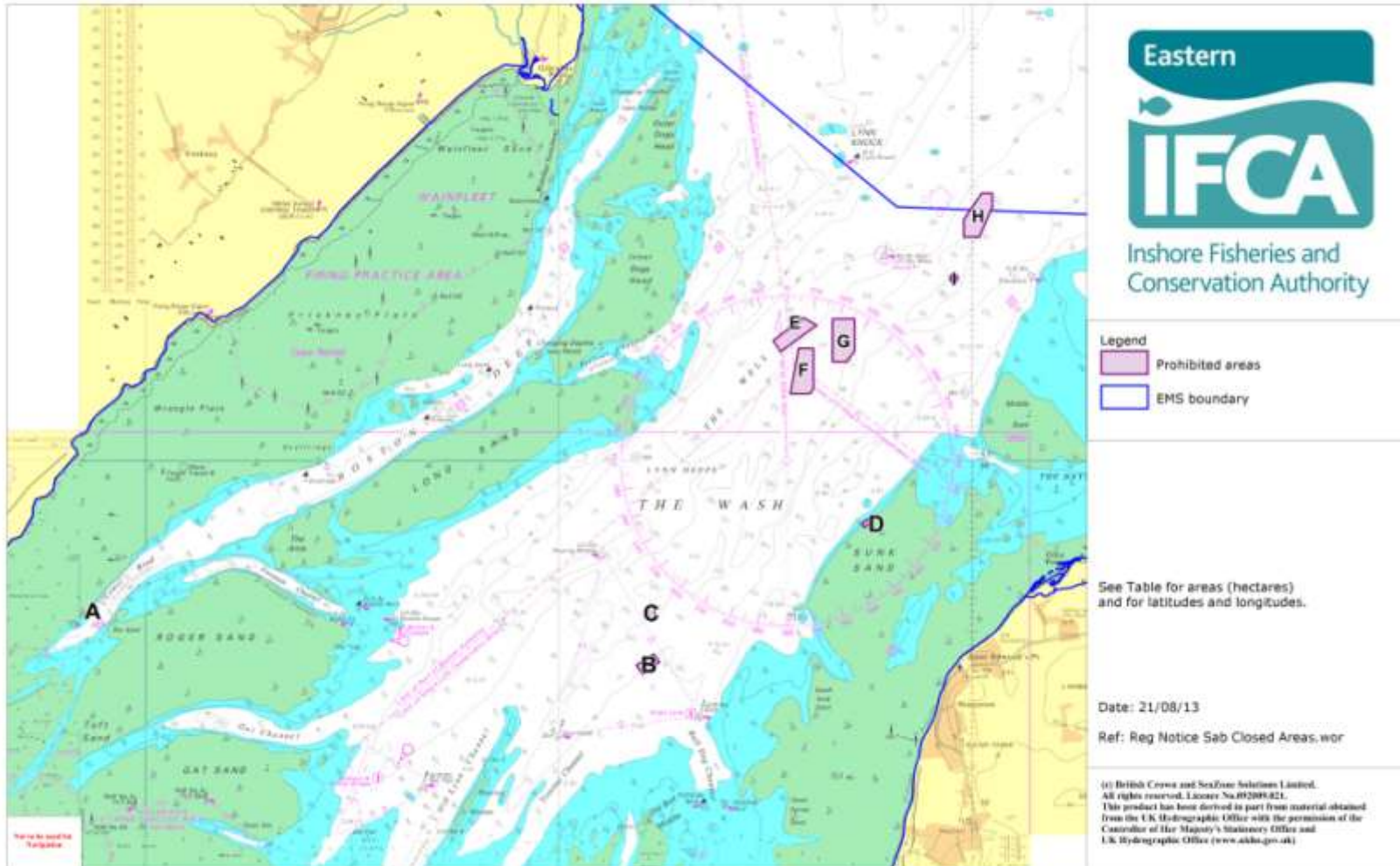
Chief Executive Officer

Eastern Inshore Fisheries and Conservation Authority

6 North Lynn Business Village, Bergen Way, Kings Lynn, Norfolk PE30 2JG

PROTECTED AREA BYELAW

Regulatory Notice 1: Ross worm reef (*Sabellaria spinulosa*) - Bottom towed gear prohibited areas



Latitudes and longitudes of prohibited areas 'A' to 'I'

		Decimal Degrees		Degrees and Decimal Minutes				Area
Area	Point	Latitude	Longitude	Latitude		Longitude		(hectares)
A	A	52.964435	0.145241	52°	57.87 'N	00°	08.71 'E	3.794
A	B	52.964188	0.146791	52°	57.85 'N	00°	08.81 'E	
A	C	52.963664	0.147152	52°	57.82 'N	00°	08.83 'E	
A	D	52.961834	0.144229	52°	57.71 'N	00°	08.65 'E	
A	E	52.962244	0.142960	52°	57.73 'N	00°	08.58 'E	
B	A	52.952530	0.371312	52°	57.15 'N	00°	22.28 'E	16.02
B	B	52.950690	0.373795	52°	57.04 'N	00°	22.43 'E	
B	C	52.947586	0.367045	52°	56.86 'N	00°	22.02 'E	
B	D	52.949891	0.364405	52°	56.99 'N	00°	21.86 'E	
C	A	52.964384	0.368918	52°	57.86 'N	00°	22.14 'E	7.048
C	B	52.964384	0.371836	52°	57.86 'N	00°	22.31 'E	
C	C	52.961141	0.371836	52°	57.67 'N	00°	22.31 'E	
C	D	52.961141	0.368918	52°	57.67 'N	00°	22.14 'E	
D	A	52.985208	0.457681	52°	59.11 'N	00°	27.46 'E	2.397
D	B	52.984399	0.458720	52°	59.06 'N	00°	27.52 'E	
D	C	52.983316	0.456385	52°	59.00 'N	00°	27.38 'E	
D	D	52.984350	0.455282	52°	59.06 'N	00°	27.32 'E	
E	A	53.034174	0.431825	53°	02.05 'N	00°	25.91 'E	40.87
E	B	53.032392	0.437149	53°	01.94 'N	00°	26.23 'E	
E	C	53.025959	0.422598	53°	01.56 'N	00°	25.36 'E	
E	D	53.028618	0.419534	53°	01.72 'N	00°	25.17 'E	
F	A	53.026787	0.429855	53°	01.61 'N	00°	25.79 'E	62.53
F	B	53.026778	0.435741	53°	01.61 'N	00°	26.14 'E	
F	C	53.016950	0.435880	53°	01.02 'N	00°	26.15 'E	
F	D	53.015641	0.434208	53°	00.94 'N	00°	26.05 'E	
F	E	53.015683	0.426479	53°	00.94 'N	00°	25.59 'E	
G	A	53.033880	0.443482	53°	02.03 'N	00°	26.61 'E	66.62
G	B	53.033880	0.452515	53°	02.03 'N	00°	27.15 'E	
G	C	53.026167	0.452500	53°	01.57 'N	00°	27.15 'E	
G	D	53.023447	0.449136	53°	01.41 'N	00°	26.95 'E	
G	E	53.023440	0.443482	53°	01.41 'N	00°	26.61 'E	
H	A	53.064353	0.503645	53°	03.86 'N	00°	30.22 'E	59.33
H	B	53.064353	0.507926	53°	03.86 'N	00°	30.48 'E	
H	C	53.061156	0.507926	53°	03.67 'N	00°	30.48 'E	
H	D	53.053696	0.502576	53°	03.22 'N	00°	30.15 'E	
H	E	53.053696	0.496399	53°	03.22 'N	00°	29.78 'E	
H	F	53.057992	0.496399	53°	03.48 'N	00°	29.78 'E	
I	A	53.044412	0.490953	53°	02.66 'N	00°	29.46 'E	2.726
I	B	53.044412	0.493889	53°	02.66 'N	00°	29.63 'E	
I	C	53.043163	0.493889	53°	02.59 'N	00°	29.63 'E	
I	D	53.043163	0.490953	53°	02.59 'N	00°	29.46 'E	