

# EASTERN INSHORE FISHERIES AND CONSERVATION AUTHORITY

## MARINE AND COASTAL ACCESS ACT 2009

### Protected Areas Byelaw

#### Regulatory Notice 4

*The Authority of the Eastern Inshore Fisheries and Conservation District in exercise of the procedure set out in the Protected Areas Byelaw issues the following Regulatory Notice for that District.*

#### **Interpretation**

In this regulatory notice: -

- a) 'Bottom towed gear' means any 'fishing gear' as defined in paragraph 1(e) of the Protected Areas Byelaw designed to be towed, dragged or pushed through the water whilst in contact with the seabed.
- b) 'Handwork' means the collection of sea fisheries resources, including bait, using the hands or handheld 'fishing gear' as defined in paragraph 1(e) of the Protected Areas Byelaw.
- c) 'Crab tiling' means laying artificial items or structures in intertidal areas to gather crabs for the purpose of fishing.
- d) 'Angling' means fishing using a rod and line or a hook and line

**Protected Area:** Humber Estuary SAC

**Characteristic for protection:** *Zostera* (eelgrass) beds

**Management measure:** Prohibition of the following:

- Fishing with bottom towed gear
- All fishing by handwork
- Fishing by crab tiling

**Exemptions:** The prohibitions do not apply to angling

**Restricted Area:** Area K per the attached chart and associated coordinates

**Commencement date:** 16<sup>th</sup> May 2014

**Latest review date:** 31<sup>st</sup> March 2017

**Expiry date:** Not applicable

**Note:** Whereas coordinates are shown in decimal degrees and in degrees and decimal minute formats, any enforcement of this Regulatory Notice will only be based upon the coordinates expressed as degrees and decimal minutes.

I hereby certify that the above Regulatory Notice was made by Eastern Inshore Fisheries and Conservation Authority at their meeting on 18<sup>th</sup> September 2013.

The said Regulatory Notice comes into effect on 16<sup>th</sup> May 2014.

**Philip Haslam**

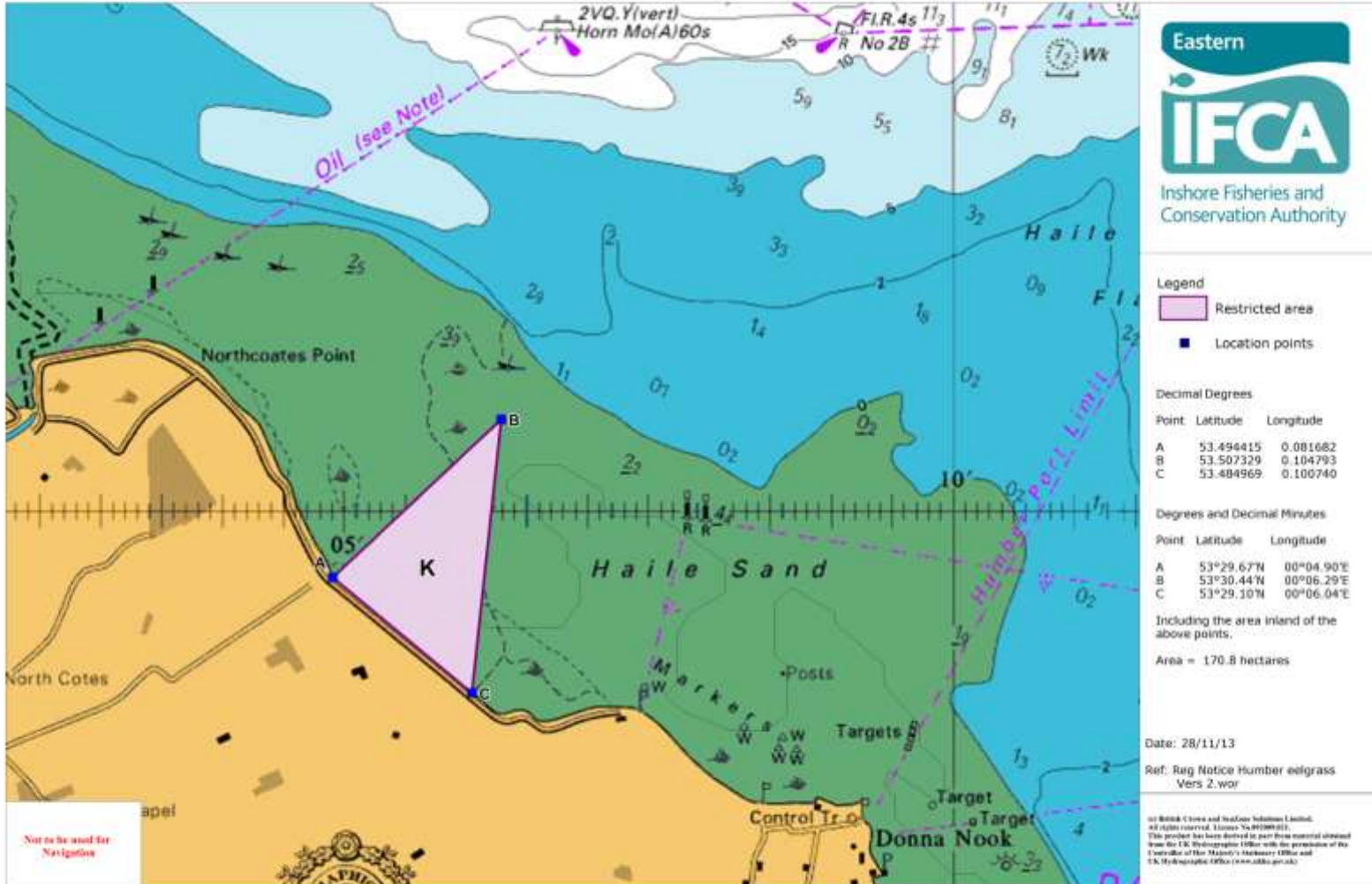
Chief Executive Officer

Eastern Inshore Fisheries and Conservation Authority

6 North Lynn Business Village, Bergen Way, Kings Lynn, Norfolk PE30 2JG

**PROTECTED AREA BYELAW**

**Regulatory Notice 4: Eelgrass (*Zostera*) - Fishing restrictions**



**Legend**

- Restricted area
- Location points

**Decimal Degrees**

Point	Latitude	Longitude
A	53.494415	0.081682
B	53.507329	0.104793
C	53.484969	0.100740

**Degrees and Decimal Minutes**

Point	Latitude	Longitude
A	53°29.67'N	00°04.90'E
B	53°30.44'N	00°06.29'E
C	53°29.10'N	00°06.04'E

Including the area inland of the above points,  
 Area = 170.8 hectares

Date: 28/11/13  
 Ref: Reg Notice Number eelgrass Vers 2.wor

© Crown Copyright and SeaZone Solutions Limited. All rights reserved. Licence No. 100000011. This product has been derived in part from material obtained from the UK Hydrographic Office with the permission of the Controller of Her Majesty's Stationery Office and UK Hydrographic Office (www.ukho.gov.uk)

Not to be used for Navigation