

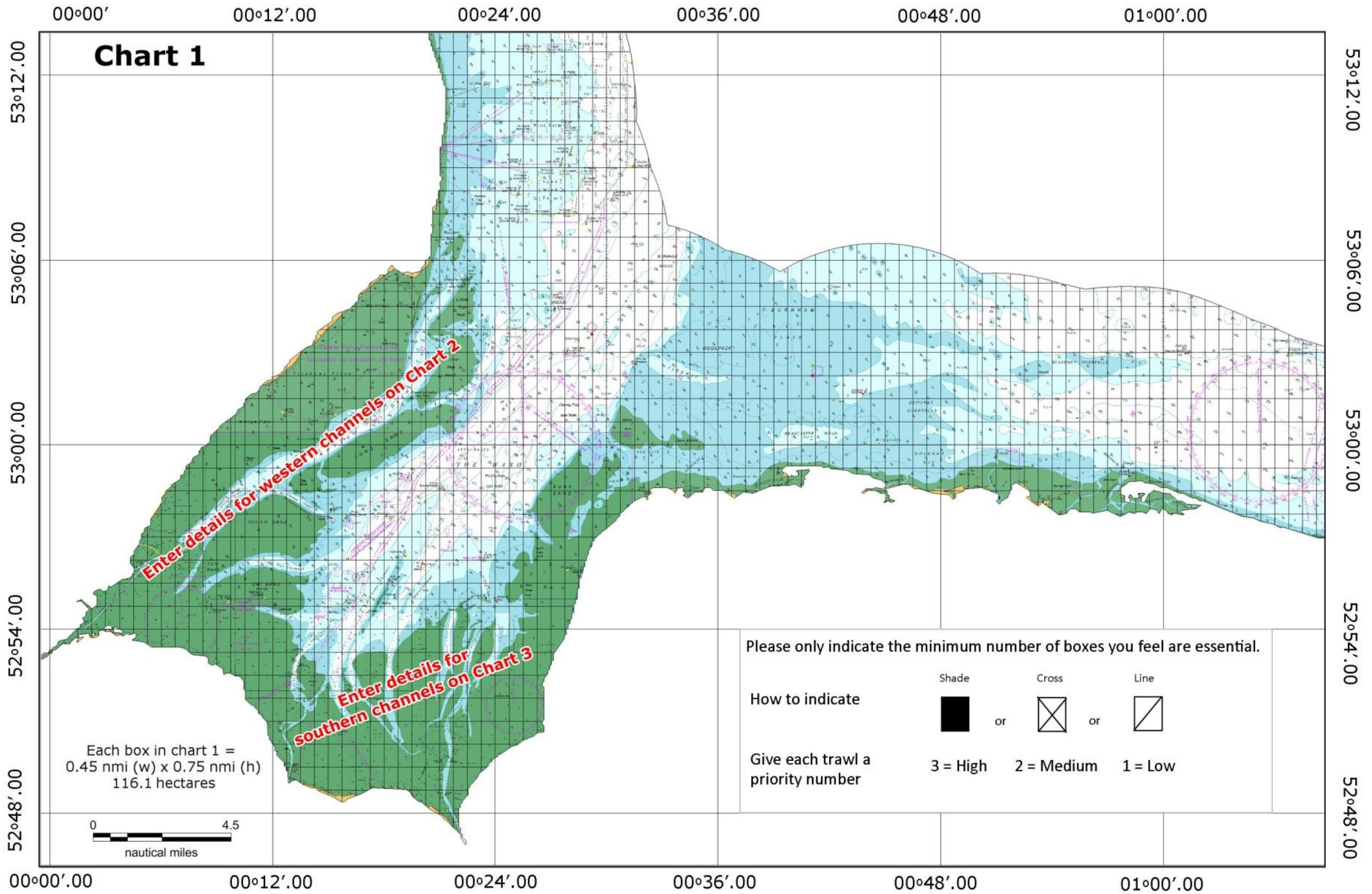
08/01/16

Towed gear activity questionnaire

Q4. Please mark onto the charts(s) 1-3:

- i. Location(s) where you trawl with towed demersal gear
- ii. Priority of the trawl locations, either as **3 = high priority, 2 = medium priority or 1 = low priority**

Comments






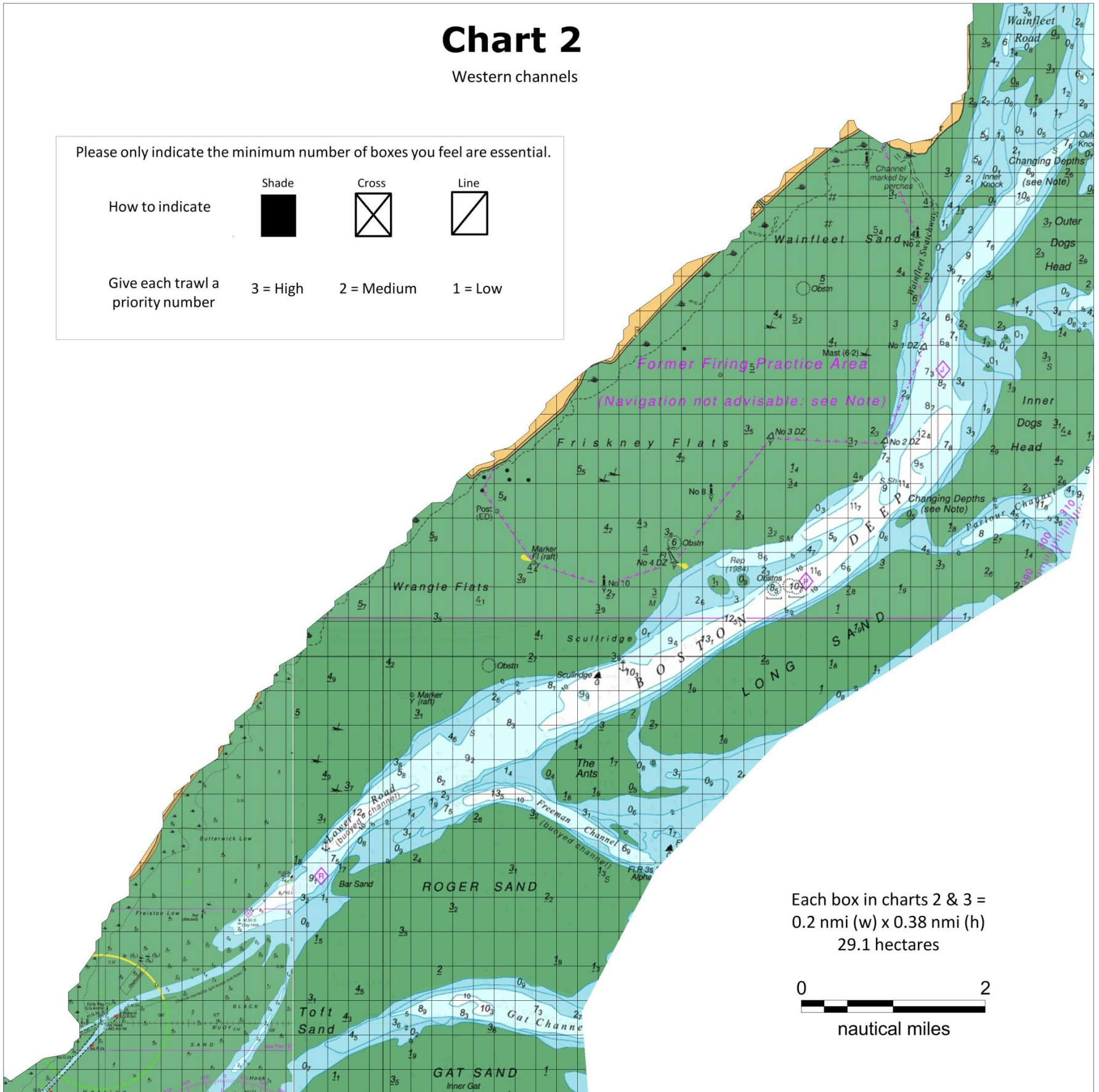
Not to be used for Navigation. (c) British Crown and SeaZone Solutions Limited. All rights reserved. Licence No.092009.021.
This product has been derived in part from material obtained from the UK Hydrographic Office with the permission of the Controller of Her Majesty's Stationery Office and UK Hydrographic Office (www.ukho.gov.uk)

Chart 2

Western channels

Please only indicate the minimum number of boxes you feel are essential.

How to indicate	Shade	Cross	Line
			
Give each trawl a priority number	3 = High	2 = Medium	1 = Low



Each box in charts 2 & 3 =
0.2 nmi (w) x 0.38 nmi (h)
29.1 hectares

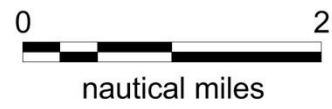
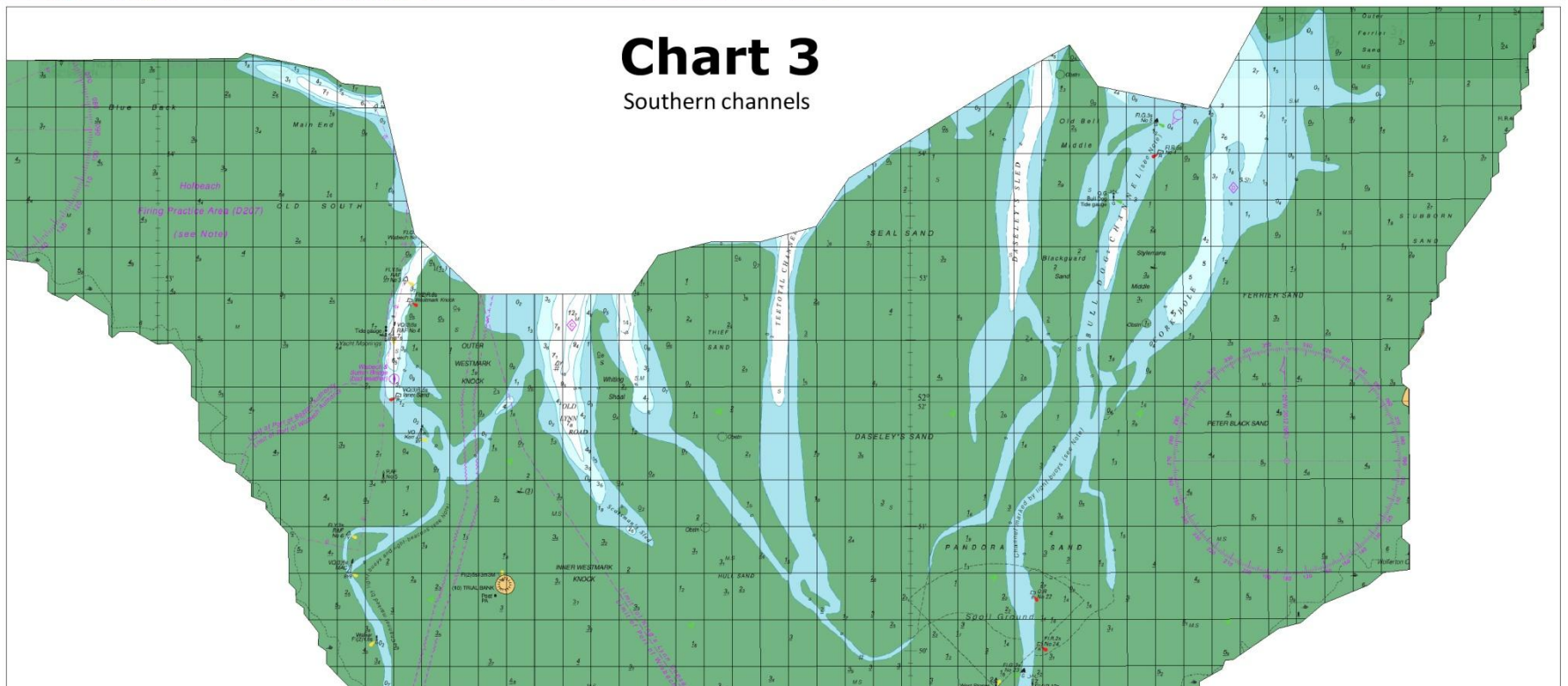


Chart 3

Southern channels



Not to be used for Navigation.
(c) British Crown and SeaZone Solutions Limited. All rights reserved. Licence No.092009_021.
This product has been derived in part from material obtained from the UK Hydrographic Office with the permission of the Controller of Her Majesty's Stationery Office and UK Hydrographic Office
(www.ukho.gov.uk)