

Marine Protected Areas Byelaw 2018

Formal consultation



Eastern Inshore Fisheries & Conservation Authority made this byelaw at its meeting on 18th July 2018. A formal consultation is now being held in relation to this byelaw.

The deadline for responses is midday on 3rd September 2018.

What will the Byelaw do?

It will prohibit fishing using bottom towed gear (e.g. trawls and dredges) in certain parts of the Eastern IFCA district, mainly in the Wash and north Norfolk coast area. The restricted areas are shown on the attached charts.

Effectively the Marine Protected Areas Byelaw 2018 will replace the Marine Protected Areas Byelaw 2016. The existing closed areas from that byelaw will be carried forward under the new byelaw, but there will also be an increase in the extent and number of areas that are closed to bottom towed gear.

Eastern IFCA is also currently consulting on a Shrimp Permit Byelaw 2018. A separate document sets out information on that Byelaw.

Why is it being brought in?

IFCAs are required to manage fisheries in a way that is compatible with conservation targets for protected areas. We have assessed fisheries in our district and identified that we need to close certain areas to trawling and dredging to prevent damage to the most sensitive habitats. This will help ensure that fishing activities do not prevent conservation targets being met.

The habitats that will be protected under the Marine Protected Areas Byelaw 2018 include *Sabellaria spinulosa* (Ross worm) core reef, subtidal stony reef, subtidal mixed sediments, subtidal mud, mosaic habitat, intertidal mussel beds and eelgrass beds.

When will it take effect?

The Byelaw will take effect after consultation comments have been considered and the Byelaw is signed off by the Secretary of State. We anticipate that the Byelaw will take effect by early 2019.

Where does it apply?

The restricted areas are shown in the attached charts. They include a large area in deep water in the centre of The Wash, an area between Wells-next-the-sea and Blakeney from the coast to 3 nautical miles (except for a coastal strip that may be fished during autumn/winter), and multiple smaller areas within the Wash embayment. The Byelaw will also apply in small intertidal areas on the Norfolk coast and one area on the southern edge of the Humber estuary. Co-ordinates of closed areas are set out in the Schedules of the byelaw.

How does it affect my activity?

If you fish using bottom towed gear in the Eastern IFCA district, you will not be able to do so in any of the restricted areas. You will be required to secure and stow your bottom towed gear when transiting through these areas unless you have been fishing up to the boundary of a restricted area or it will be fishing immediately upon leaving the restricted area.

Are there any exemptions?

Wash Fishery Order licence holders may dredge within Restricted areas 1 to 13 (intertidal mussel beds), subject to the regulations and conditions of that Order.

The closure of restricted area 33 only applies between 1st April and 15th October in any year.

The Byelaw does not apply to fishing activities undertaken under any rights of common.

Will the byelaw be reviewed?

The Marine Protected Areas Byelaw 2018 will be regularly reviewed, as Eastern IFCA gathers evidence on the effectiveness of the Byelaw. We anticipate that further closed areas will be introduced to protect sensitive habitats in other parts of the Eastern IFCA district. Existing closed areas could be re-opened if evidence shows they are not required. We will consult again when any such changes are proposed.

Where can I find more information?

The areas restricted under the Marine Protected Areas Byelaw 2018 are shown in the attached charts. Further information is available on the Eastern IFCA website. This includes the shrimp fishery assessment document, informal consultation reports, the draft Byelaw, and the byelaw impact assessment.

You are welcome to speak to Eastern IFCA staff in person or by telephone (01553) 775321, or by emailing mail@eastern-ifca.gov.uk

Can I make a comment?

Responses to the current consultation should be sent by 12 noon on 3rd September 2018 to:

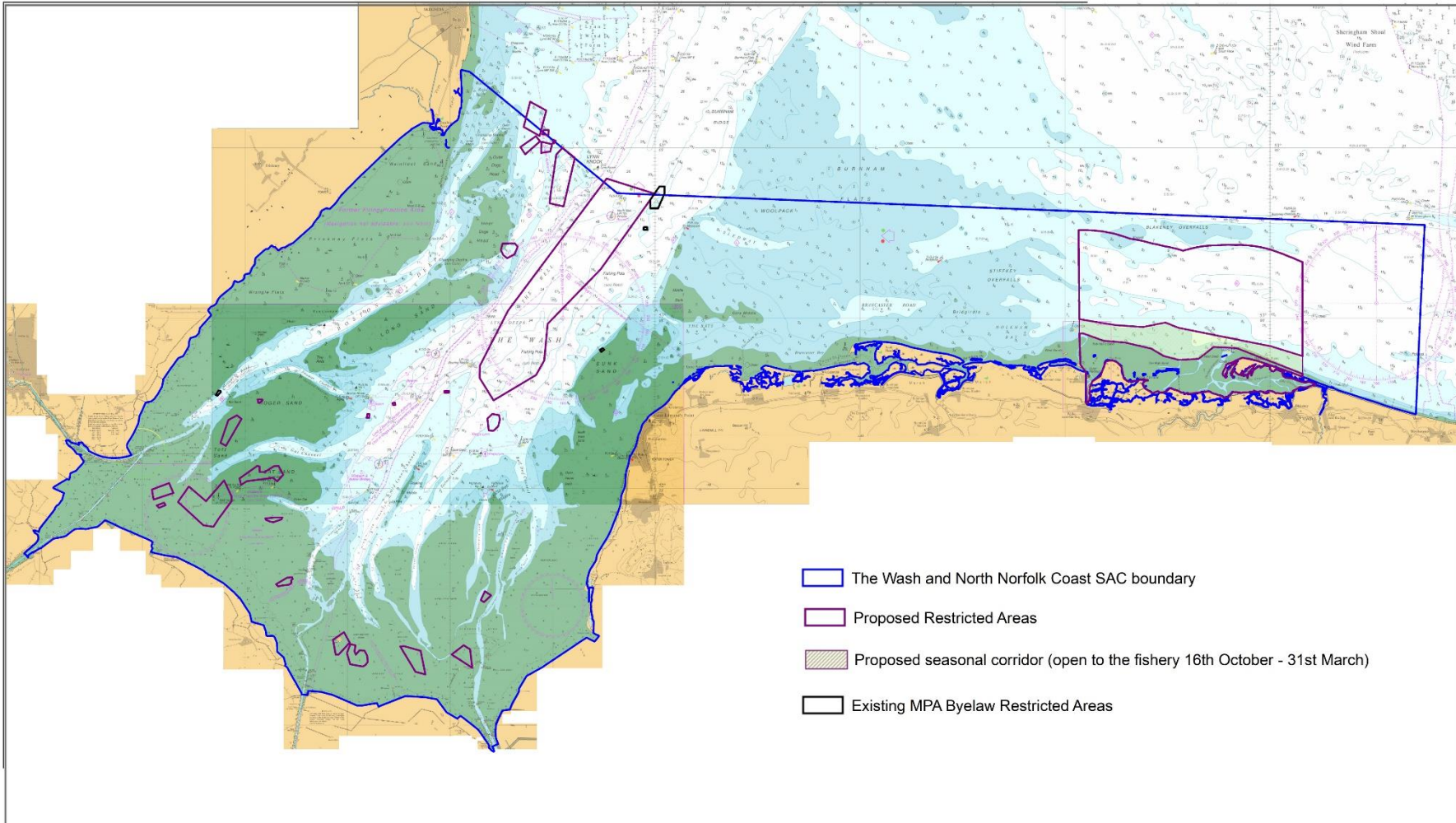
CEO, Eastern Inshore Fisheries & Conservation Authority, Unit 6 North Lynn Business Village, Bergen Way, King's Lynn, Norfolk, PE30 2JG.

Email: mail@eastern-ifca.gov.uk

and to:

Marine Conservation and Enforcement Team, Marine Management Organisation, Lancaster House, Hampshire Court, Newcastle-Upon-Tyne, NE4 7HY.

Email: IFCAByelaws@marinemanagement.org.uk



Overview of proposed Marine Protected Areas Byelaw 2018 - Restricted Areas (proposed and *existing) within the Wash and North Norfolk Coast SAC

*Existing Restricted Areas were made under the MPA Byelaw 2016 which this Byelaw is replacing.

(For further details see Charts 1 - 3)

Not to be used for Navigation. Contains public sector information licensed under the Open Government Licence v1.0
 (c) British Crown and OceanWise 2018. All rights reserved. Licence No.EK001-20180110.
 This product has been derived in part from material obtained from the UK Hydrographic Office with the permission of the UK Hydrographic Office, Her Majesty's Stationery Office and other relevant authorities.

Date:26/07/18 Drawn by:SC
 Projection: Lat Long WSG84
 Data sources: EMS boundary:JNCC download
 UK_SACs_withMarineComponents_2103821

2018_07_Adm_Ovv_Layout_proposed_Restricted_Areas.WOR

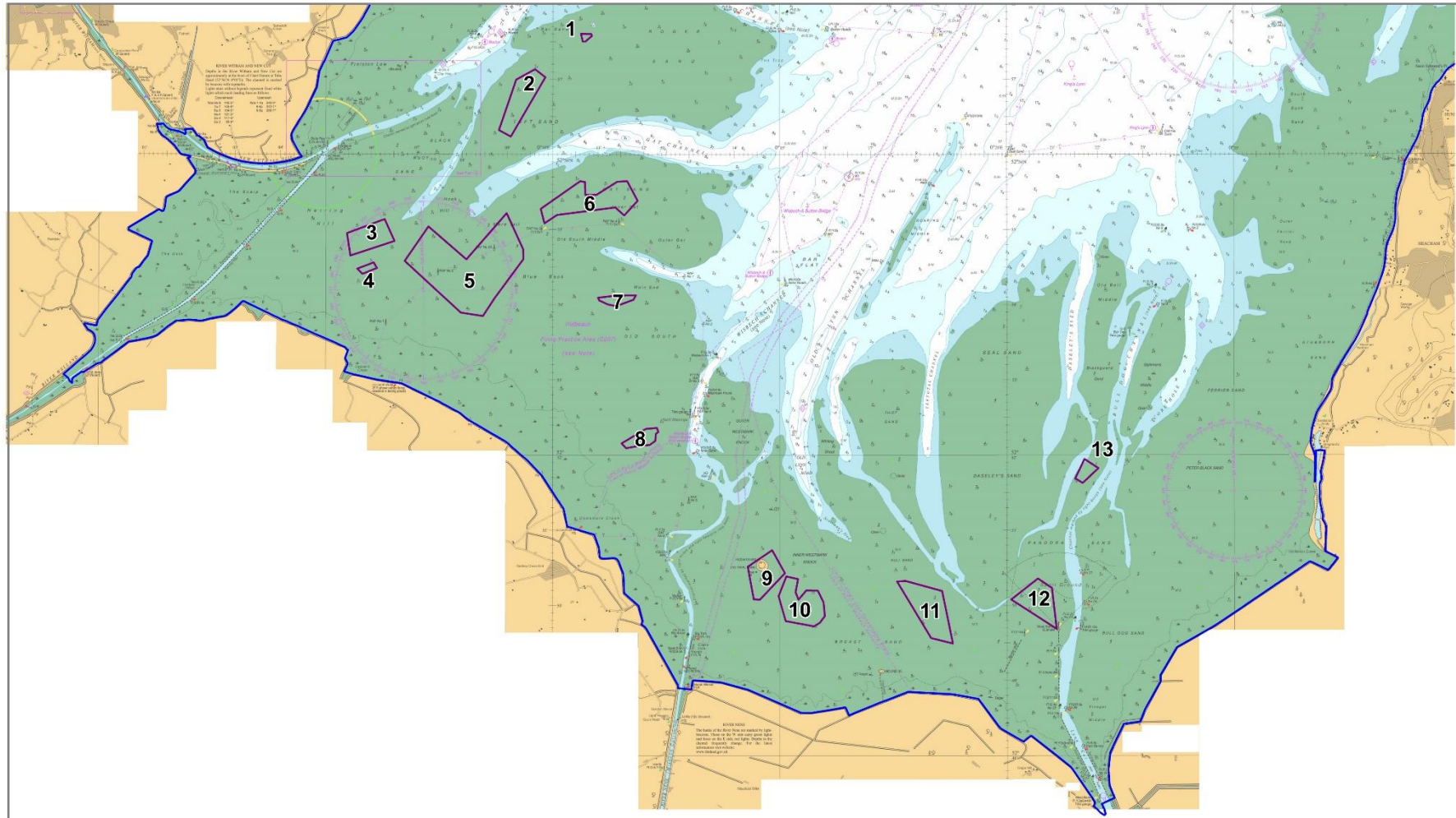


Chart 1: The Wash Mussel Beds - Proposed Closures to Bottom Towed Gear

- Proposed Restricted Areas
- The Wash and North Norfolk Coast SAC boundary

Not to be used for Navigation. Contains public sector information licensed under the Open Government Licence v1.0 (c) British Crown and OceanWise 2018. All rights reserved. Licence No.EK001-20180110.
 This product has been derived in part from material obtained from the UK Hydrographic Office with the permission of the UK Hydrographic Office, Her Majesty's Stationery Office and other relevant authorities.

Date:27/07/18
 Drawn by:SC
 Projection: Lat Long WSG84
 EMS boundary:JNCC download -
 UK_SACs_withMarineComponents_2103821

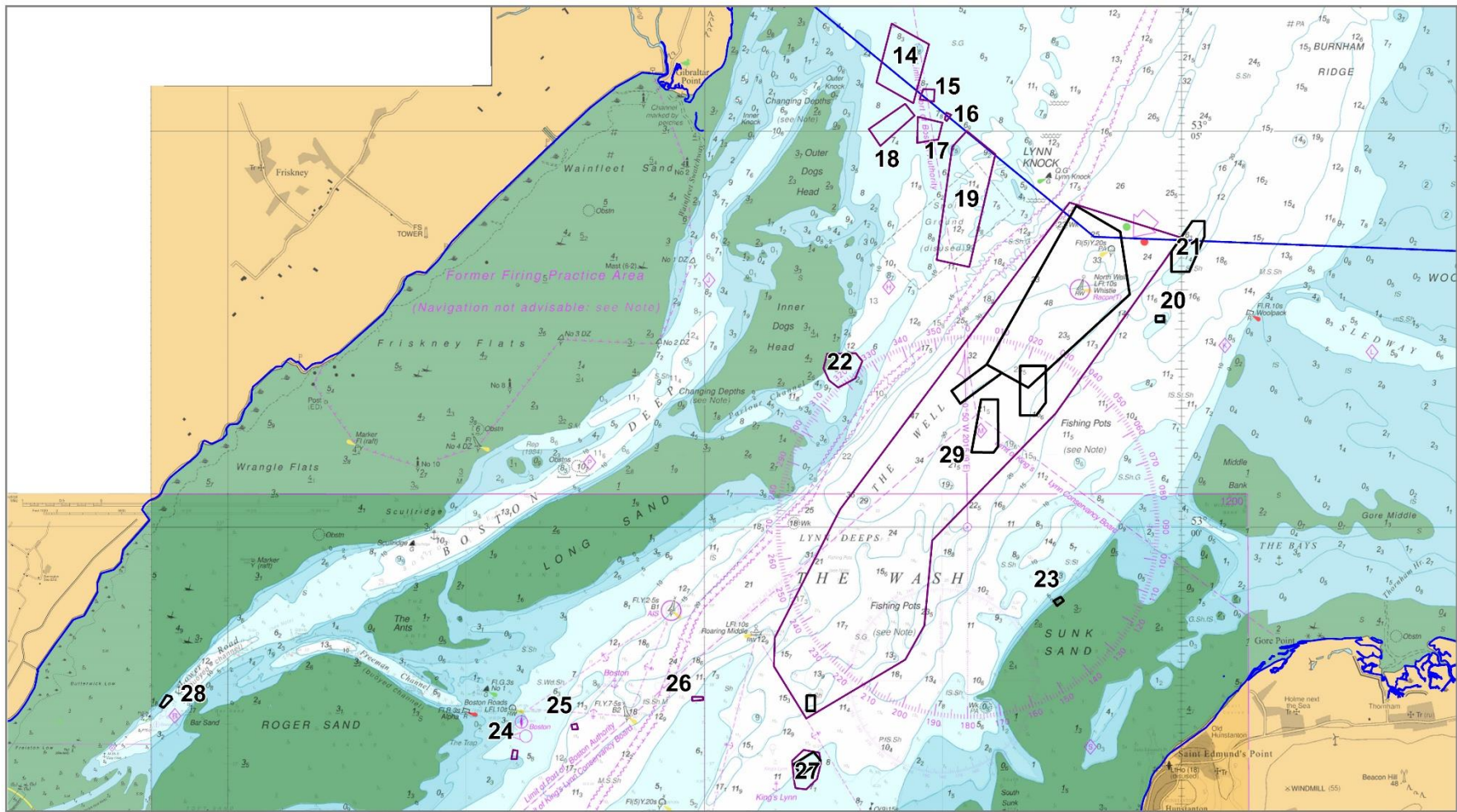


Chart 2: The Wash Central & Northern - Proposed Closures to Bottom Towed Gear

- Proposed Restricted Areas
- The Wash and North Norfolk Coast SAC boundary
- Existing MPA Byelaw Restricted Areas

Not to be used for Navigation. Contains public sector information licensed under the Open Government Licence v1.0
 (c) British Crown and Oceanwise 2018. All rights reserved. Licence No.EK001-20180110.
 This product has been derived in part from material obtained from the UK Hydrographic Office with the permission of the UK Hydrographic Office, Her Majesty's Stationary Office and other relevant authorities.

Date:27/07/18
 Drawn by:SC
 Projection: Lat Long WSG84
 EMS boundary:JNCC download -
 UK_SACs_withMarineComponents_2103821

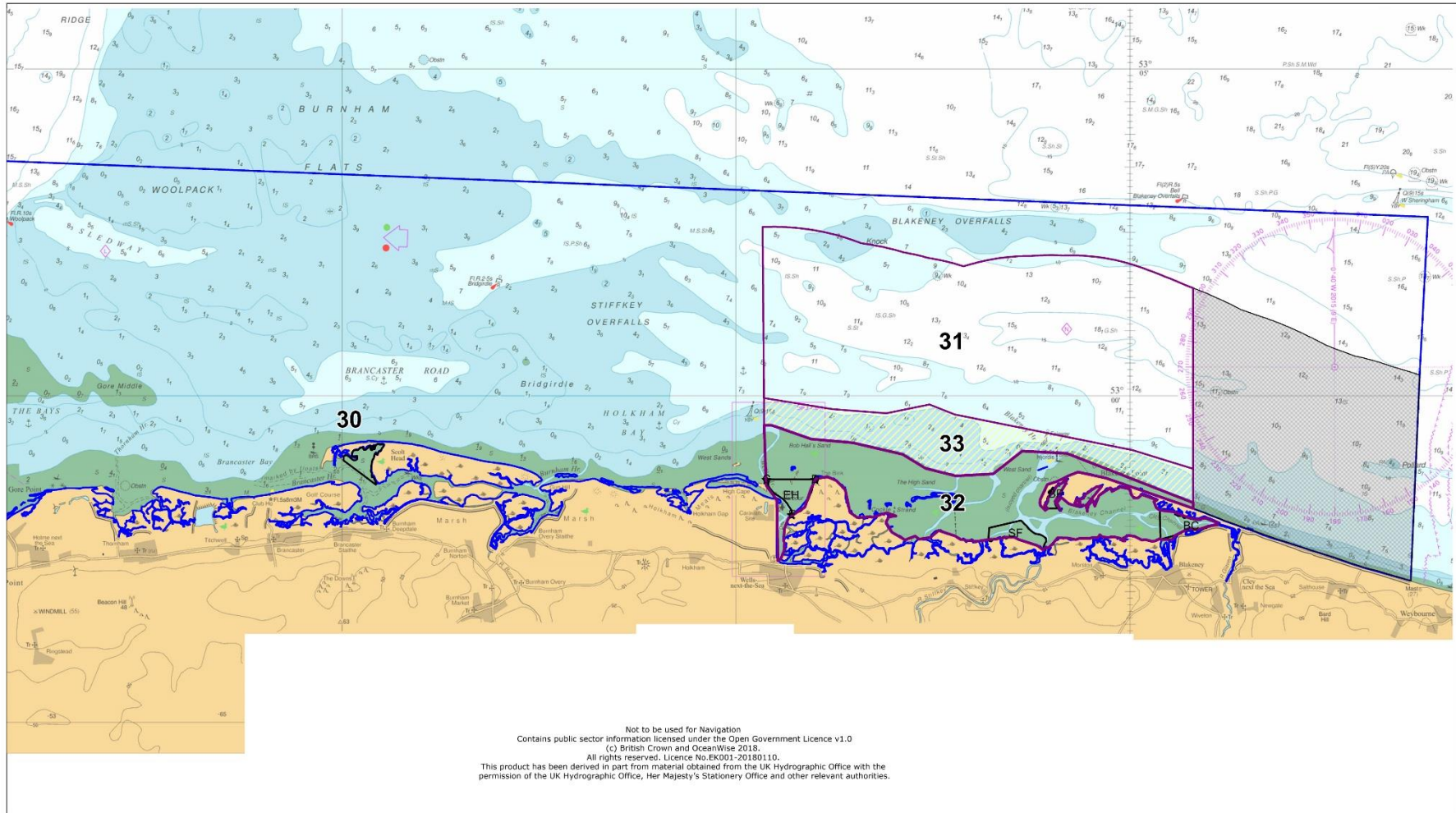


Chart 3: North Norfolk Coast - Proposed Closures to Bottom Towed Gear

- Proposed Restricted Areas
- Proposed seasonal corridor (open to the fishery 16th October - 31st March)
- The Wash and North Norfolk Coast Coast SAC boundary
- Existing Byelaw 12 Trawling Restricted Area
- Existing MPA Byelaw Restricted Area

Date: 27/07/18
 Drawn by: SC
 Projection: Lat Long WSG84
 EMS boundary: JNCC download -
 UK_SACs_withMarineComponents_2103821

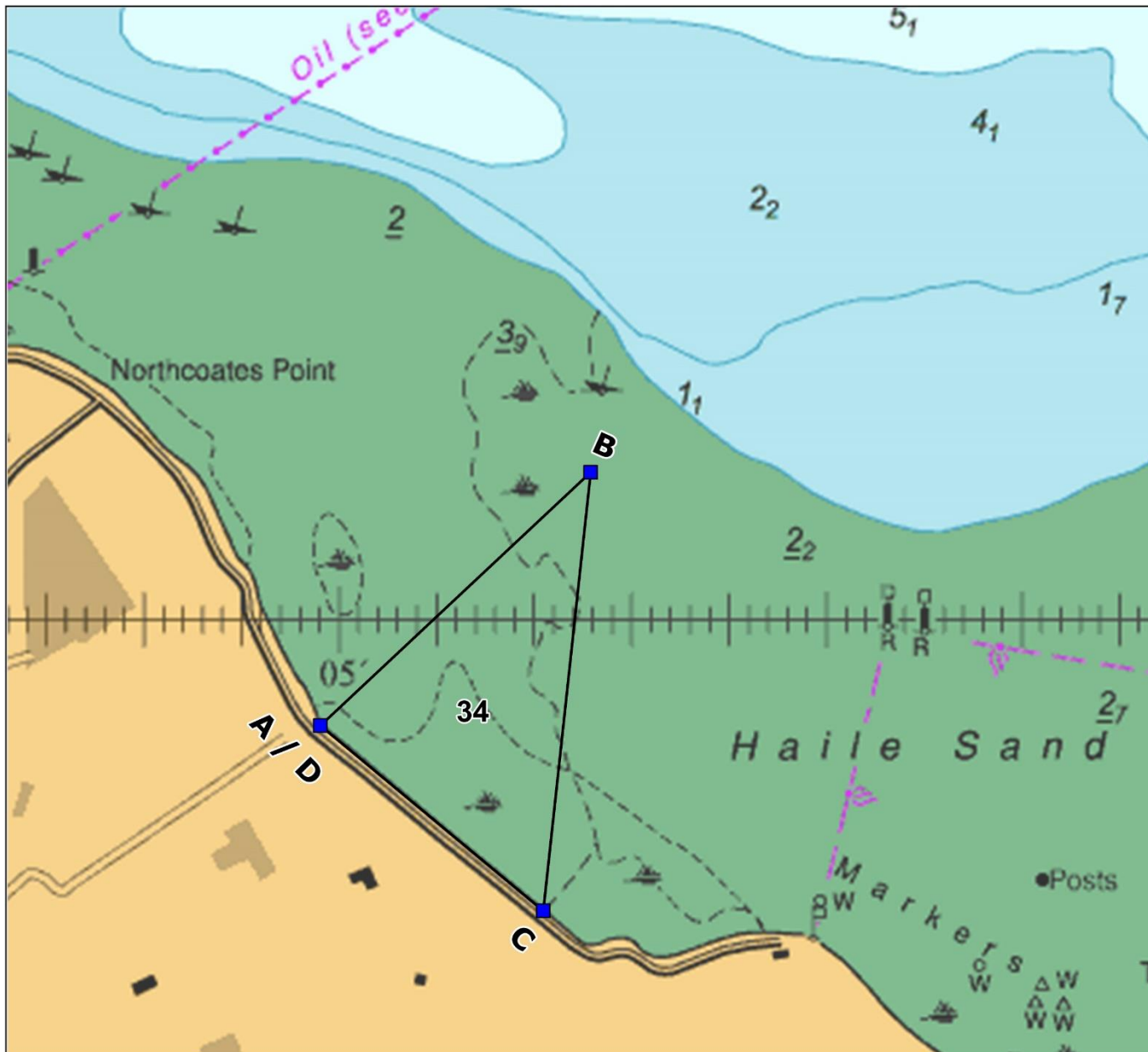


Chart 4: Humber Eelgrass

- A person must not:
- a) fish with bottom towed gear;
 - b) fish by handwork;
 - c) fish by crab tiling.

Existing MPA Byelaw Restricted Area

Location points

Decimal Degrees

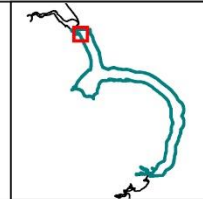
Point	Latitude	Longitude
A	53.494415°	0.081682°
B	53.507329°	0.104793°
C	53.484969°	0.100740°
D	53.494415°	0.081682°

Degrees and Decimal Minutes

Point	Latitude	Longitude
A	53° 29.67' N	00° 04.90' E
B	53° 30.44' N	00° 06.29' E
C	53° 29.10' N	00° 06.04' E
D	53° 29.67' N	00° 04.90' E

Area = 170.8 hectares

Date: 26/07/18 Drawn by: SC
 Projection: Lat Long WSG84
 Data sources: EIFCA
 Ref: 2018_07_26_MPA_Byelaw_2018_Chart_4_wor



Not to be used for Navigation
 Contains public sector information licensed under the Open Government Licence v1.0
 (c) British Crown and OceanWise 2018.
 All rights reserved. Licence No.EK001-20180110.
 This product has been derived in part from material obtained from the UK Hydrographic Office with the permission of the UK Hydrographic Office, Her Majesty's Stationery Office and other relevant authorities.