

**Marine Protected Areas Byelaw 2019**  
**Proposed new restricted areas –**  
**informal engagement**



**Eastern Inshore Fisheries & Conservation Authority (Eastern IFCA) is considering new restricted areas off the north and east Norfolk coast. We are seeking to understand what impact this management could have on sea users in these areas. This is an opportunity for you to feed into Eastern IFCA’s decision-making process.**

**The deadline for responses is midday on 24<sup>th</sup> April 2019.**

*What is being proposed?*

Eastern IFCA is proposing to prohibit fishing using bottom towed gear (e.g. trawls and dredges) in certain parts of the Eastern IFCA district, located off the north and east coasts of Norfolk. The areas under consideration are shown on the attached charts but the actual boundaries of the closures may be smaller and will be finalised taking into account this consultation.

*Why is this management needed?*

IFCAs must manage fisheries in a way that is compatible with conservation targets for protected areas. We have assessed fisheries in our district and identified that we need to close certain areas to trawling and dredging to prevent damage to the most sensitive habitats. This will help achieve the United Kingdom’s vision for “clean, healthy, safe, productive and biologically diverse oceans and seas”.

We have already protected sensitive habitats in the Humber Estuary, The Wash and parts of the north Norfolk coast using our Marine Protected Areas Byelaw. The habitats that will be protected in the proposed new closures are chalk beds between Weybourne and Happisburgh, and *Sabellaria spinulosa* (Ross worm) reef off the east Norfolk coast.

Our consultation tracker (available [here](#)) sets out other measures we are currently (or soon will be) consulting on.

*When will it take effect?*

Eastern IFCA will consider the evidence supporting the closures, and information on the likely impact on sea users in the affected areas. If approved, the closures would take effect after a further consultation period and once the Byelaw is signed off by the Secretary of State. We anticipate that this could be in early 2020.

### *Where will it apply?*

The restrictions would apply within all or part of the following areas (see charts):

- Within the *Cromer Shoal Chalk Beds Marine Conservation Zone*, one large area extending from Weybourne to Happisburgh from the coast to approximately 5 nautical miles, and
- Within *Haisborough, Hammond & Winterton Special Area of Conservation*, three discrete areas off the east Norfolk coast:
  - North of Winterton Shoal,
  - Barley Picle and
  - East of Cross Sands.

Whilst the conservation features at these locations must be protected, the final boundaries of the closed areas could be influenced by your input at this stage.

### *How does it affect my activity?*

If you fish using bottom towed gear in the Eastern IFCA district, you will not be able to do so in any of the restricted areas.

### *Are there any exemptions?*

This Byelaw does not apply to fishing activities undertaken under any rights in common.

### *Will the measures be reviewed?*

The Marine Protected Areas Byelaw will be regularly reviewed, as Eastern IFCA gathers evidence on the effectiveness of the Byelaw. We anticipate that further closed areas will be introduced to protect sensitive habitats in other parts of the Eastern IFCA district. Existing closed areas could be re-opened if evidence shows the closures are not required. We will consult again when any such changes are proposed.

### *Where can I find more information?*

The proposed restricted areas are shown in the attached charts.

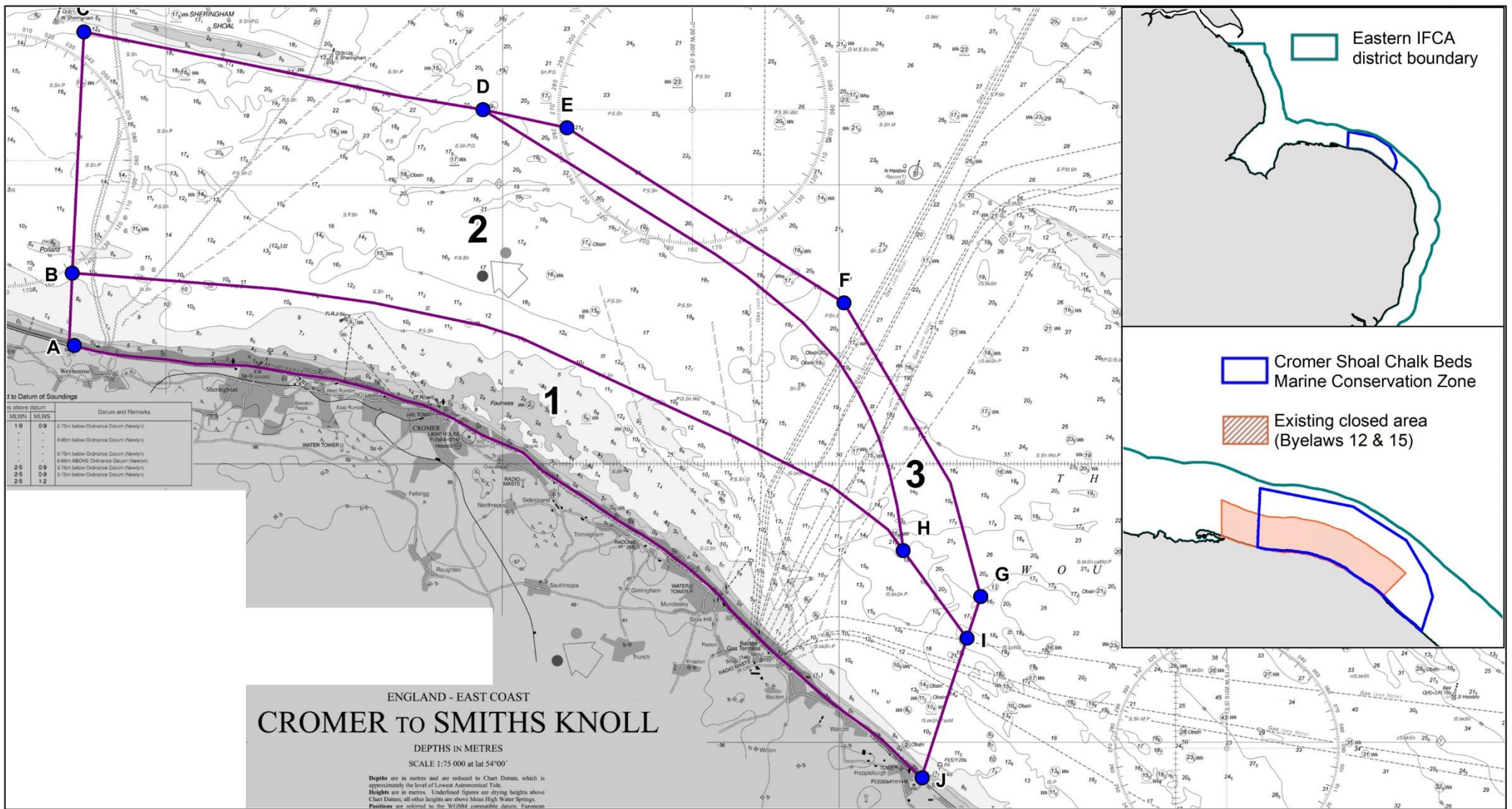
You are welcome to speak to Eastern IFCA staff in person or by telephone (01553) 775321, or by emailing [mail@eastern-ifca.gov.uk](mailto:mail@eastern-ifca.gov.uk)

### *Can I make a comment?*

We welcome your input. Please use the questionnaire ([available here](#)) to provide your responses to the consultation. These should be sent by **12 noon on 24<sup>th</sup> April 2019** to:

CEO, Eastern Inshore Fisheries & Conservation Authority, Unit 6 North Lynn Business Village, Bergen Way, King's Lynn, Norfolk, PE30 2JG.

Or by email to [mail@eastern-ifca.gov.uk](mailto:mail@eastern-ifca.gov.uk)

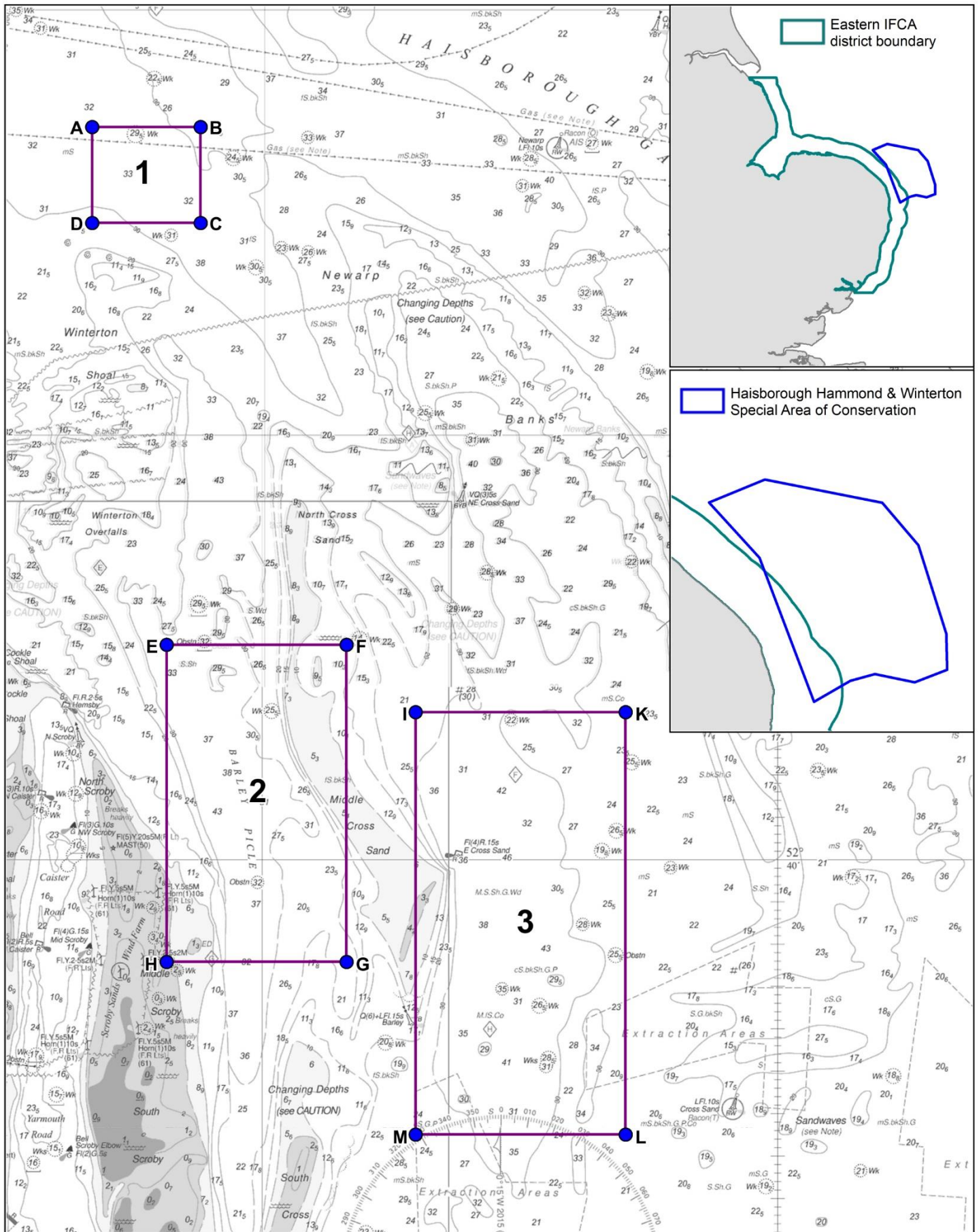


### North Norfolk Coast

Proposed restriction to bottom towed gear informal engagement chart.  
 Not to be used for navigation, for illustrative purposes only.

- Management focus areas
- Location point (for coordinates see Table 1)

Date: 27/03/19 Drawn by: SC  
 Projection: Lat Long WSG84  
 EMS boundary: JNCC download - UK\_SACs\_withMarineComponents\_2103821  
 Eastern IFCA boundary; Existing byelaw areas; Management focus areas: EIFCA  
 2018\_09\_28\_Layout\_CSCB\_closure.WOR

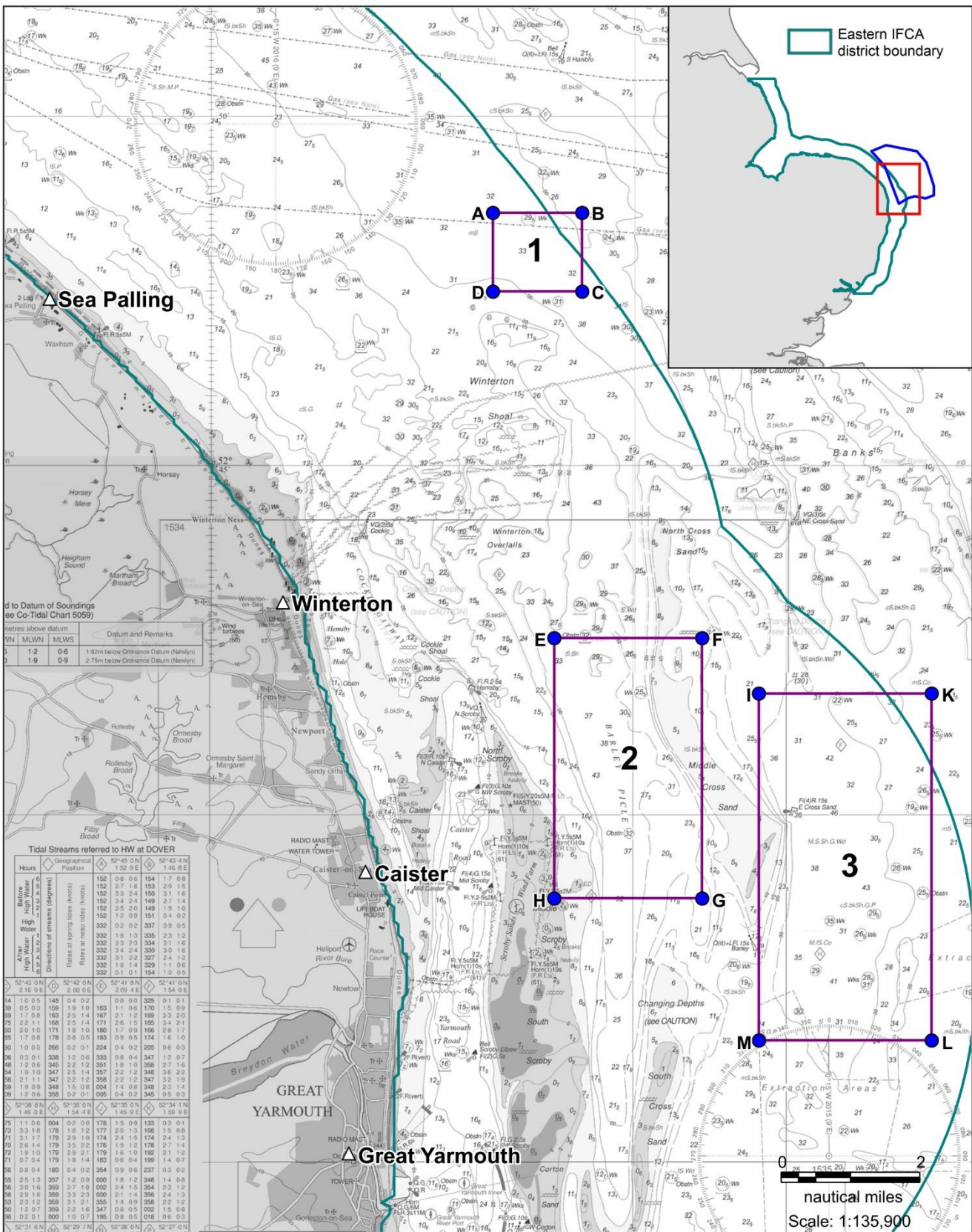


### East Norfolk Coast

Proposed restrictions to bottom towed gear informal engagement chart.  
 Not to be used for navigation, for illustrative purposes only.

- Management focus areas
- Location point (for coordinates see Table 2)

Date: 22/03/19 Drawn by: SC  
 Projection: Lat Long WSG84  
 EMS boundary: JNCC download - UK\_SACs\_withMarineComponents\_2103821  
 Eastern IFCA boundary: EIFCA  
 EIFCA focus areas: EIFCA  
 2019\_03\_22\_Layout2\_HHW\_closure.wor



Heights above datum

WN	MLWN	MLWS	Datum and Remarks
1	1.2	0.6	1.62m below Ordnance Datum (Newlyn)
2	1.9	0.9	2.75m below Ordnance Datum (Newlyn)

Tidal Streams referred to HW at DOVER

Hours	Geographical Position	52°45' 0"N 1°52' 9"E	52°43' 4"N 1°46' 8"E
14	10 0.5	145 0 4 0.2	0 0 0 0 325 0 1 0 1
15	0 5 0.3	159 1 9 1.0	163 1 1 0 6 170 1 5 0 9
16	1 0 0.1	163 2 5 1.4	167 2 1 2 189 3 0 0 9
17	2 1 1.1	168 2 5 1.4	171 2 6 1 185 3 4 2 1
18	3 2 1.0	171 1 8 1.0	180 1 7 0 9 165 2 8 1 7
19	4 3 1.7	178 0 8 0.5	193 0 9 0.5 174 1 6 1 0
20	5 4 1.0	185 0 2 0.1	204 0 4 0.2 205 0 6 1 3
21	6 5 0.3	191 0 4 0.2	214 0 4 0.2 347 1 2 0 7
22	7 6 1.2	196 0 3 0.3	221 0 1 0 358 2 7 1 5
23	8 7 1.9	201 0 2 0.4	227 0 2 1 348 3 6 2 2
24	9 8 2 1.1	204 0 2 1.2	231 0 2 1 347 3 2 1 9
25	10 9 1.9	206 0 1 0.6	234 0 1 0.6 345 0 5 0 3
26	11 10 2 0.6	208 0 1 0.1	235 0 1 0.1 154 1 0 0 5

Scale: 1:135,900



**East Norfolk Coast**  
 Proposed restrictions to bottom towed gear informal engagement chart.  
 Not to be used for navigation, for illustrative purposes only.

Management focus areas (indicated by purple rectangles)

Location point (for coordinates see Table 2) (indicated by blue dots)

Date: 05/04/19 Drawn by: SC  
 Projection: Lat Long WSG84  
 EMS boundary: JNCC download - UK\_SACs\_withMarineComponents\_2103821  
 Eastern IFCA boundary: EIFCA  
 EIFCA focus areas: EIFCA  
 2019\_03\_22\_Layout3\_HHW\_closure.wor

Contains public sector information licensed under the Open Government Licence v1.0 (c) British Crown and OceanWise 2019. All rights reserved. Licence No.EK001-20180110. This product has been derived in part from material obtained from the UK Hydrographic Office with the permission of the UK Hydrographic Office, Her Majesty's Stationery Office and other relevant authorities.

Table 1: North Norfolk Coast Management Focus Areas				
ID	Decimal Degrees		Decimal Degrees minutes	
	Latitude	Longitude	Latitude	Longitude
A	52.952	1.121	52°57.12' N	01°07.27' E
B	52.974	1.120	52°58.42' N	01°07.21' E
C	53.046	1.126	52°02.74' N	01°07.55' E
D	53.022	1.324	52°01.34' N	01°19.42' E
E	53.017	1.365	52°01.02' N	01°21.91' E
F	52.965	1.502	52°57.88' N	01°30.14' E
G	52.877	1.570	52°52.61' N	01°34.21' E
H	52.891	1.532	52°53.44' N	01°31.90' E
I	52.864	1.563	52°51.86' N	01°33.80' E
J	52.823	1.541	52°49.35' N	01°32.46' E

Table 2: East Norfolk Coast Management Focus Areas					
Box Number	ID	Decimal Degrees		Degrees Decimal minutes	
		Latitude	Longitude	Latitude	Longitude
1	A	52.810	1.778	52°48.61' N	01°46.65' E
	B	52.810	1.813	52°48.61' N	01°48.75' E
	C	52.791	1.813	52°47.49' N	01°48.75' E
	D	52.791	1.778	52°47.49' N	01°46.65' E
2	E	52.709	1.802	52°42.52' N	01°48.09' E
	F	52.709	1.860	52°42.52' N	01°51.59' E
	G	52.646	1.860	52°38.78' N	01°51.59' E
	H	52.646	1.802	52°38.78' N	01°48.09' E
3	I	52.695	1.882	52°41.72' N	01°52.93' E
	K	52.695	1.950	52°41.72' N	01°57.01' E
	L	52.612	1.950	52°36.74' N	01°57.01' E
	M	52.612	1.882	52°36.74' N	01°52.93' E