

Marine Protected Areas Byelaw 2019

Proposed new restricted areas –

Formal consultation



Eastern Inshore Fisheries & Conservation Authority (Eastern IFCA) has agreed to introduce new restricted areas off the north and east Norfolk coast. The current public consultation is an opportunity to comment on, support or object to this management before it is finalised.

The deadline for responses is midday on 22nd July 2019.

What is being proposed?

Eastern IFCA is planning to create the Marine Protected Areas Byelaw 2019, which will introduce new restricted areas for bottom-towed fishing (e.g. trawling and dredging) in certain parts of the Eastern IFCA district. Existing restricted areas will remain in place under the new byelaw. The new restricted areas are listed in the table below and illustrated in the attached charts.

Marine protected area	New management areas (see charts)	Habitats being protected
The Wash & North Norfolk Coast Special Area of Conservation	Wells to Weybourne (Chart 3: areas 32, 33 and 34) <i>(areas 30 and 31 are existing closed areas)</i>	Intertidal sand, subtidal mixed sediments, subtidal mud, Harbour seals
Cromer Shoal Chalk Beds Marine Conservation Zone	Weybourne to Happisburgh (Chart 4: area 35)	Subtidal chalk, infralittoral rock, circalittoral rock, peat and clay exposures, subtidal mixed sediment, subtidal sand, subtidal coarse sediment
Haisborough, Hammond & Winterton Special Area of Conservation	Three areas off east Norfolk coast (Chart 5: areas 36, 37 and 38)	Subtidal biogenic reef: <i>Sabellaria spinulosa</i> (Ross worm reef)

Why is this management needed?

IFCAs must ensure fisheries operate in a way that is compatible with conservation targets for marine protected areas. The intention is to maintain or recover a healthy abundance and range of marine wildlife, and – where possible in accordance with these objectives – to support sustainable fisheries in these areas. This will help achieve the United Kingdom’s vision for “clean, healthy, safe, productive and biologically diverse oceans and seas”.

We have assessed fisheries in our district and identified that we need to close certain areas to trawling and dredging to prevent damage to the most sensitive habitats within protected areas.

Why is Eastern IFCA consulting again on the Marine Protected Areas Byelaw?

We are developing management in line with the findings of our assessments of fisheries impacts across all the marine protected areas in the Eastern IFCA district. We have already protected sensitive habitats in the Humber Estuary, The Wash and parts of the north Norfolk coast using previous versions of the Marine Protected Areas Byelaw. The new (2019) version of the Byelaw will continue to protect these areas and will protect habitats in the additional areas listed in the table above.

Following consultation on the previous (2018) iteration of the Marine Protected Areas Byelaw, Eastern IFCA chose not to implement two restricted areas with The Wash & North Norfolk Coast Special Area of Conservation, because there was insufficient evidence to support their closure. Further evidence was subsequently provided to Eastern IFCA, so we are now proposing to include those two restricted areas (numbered 32 and 33 in Chart 3) in the Marine Protected Areas Byelaw 2019, as well as the new closures numbered 34 to 38 (shown in Charts 3, 4 and 5).

When will it take effect?

Eastern IFCA agreed to progress the byelaw in May 2019. The current consultation period ends on 22nd July 2019. After responses have been considered and changes made (if required), the Byelaw will be submitted for final sign-off by the Secretary of State. The byelaw will take effect at final sign-off. We anticipate that this could be in early 2020.

How does it affect my activity?

If you fish using bottom-towed gear in the Eastern IFCA district, you will not be able to do so in any of the restricted areas.

Are there any exemptions?

This Byelaw does not apply to fishing activities undertaken under any rights in common.

Will the measures be reviewed?

The Marine Protected Areas Byelaw will be regularly reviewed, as Eastern IFCA gathers evidence on the effectiveness of the Byelaw. We anticipate that further closed areas will be introduced to protect sensitive habitats in other parts of the Eastern IFCA

district. Existing closed areas could be re-opened if evidence shows the closures are not required. We will consult again when any such changes are proposed. Our consultation tracker ([available here](#)) sets out other measures we are currently (or soon will be) consulting on.

Where can I find more information?

Charts showing the new restricted areas are set out below. Rationale for the proposals, the wording of the byelaw, charts and co-ordinates of all of the restricted areas (existing and new) and the Impact Assessment for the byelaw are available on the Eastern IFCA website [here](#). For further information, you are welcome to speak to Eastern IFCA staff in person or by telephone (01553) 775321, or by emailing mail@eastern-ifca.gov.uk

Can I make a comment?

We welcome your input. Please send your feedback, by **12 noon on 22nd July 2019** to:

CEO, Eastern Inshore Fisheries & Conservation Authority, Unit 6 North Lynn Business Village, Bergen Way, King's Lynn, Norfolk, PE30 2JG.

Or by email to mail@eastern-ifca.gov.uk

Please also copy your feedback to:

Marine Conservation and Enforcement Team, Marine Management Organisation, Lancaster House, Hampshire Court, Newcastle-Upon-Tyne, NE4 7HY,

Email: IFCAbyelaws@marinemanagement.org.uk

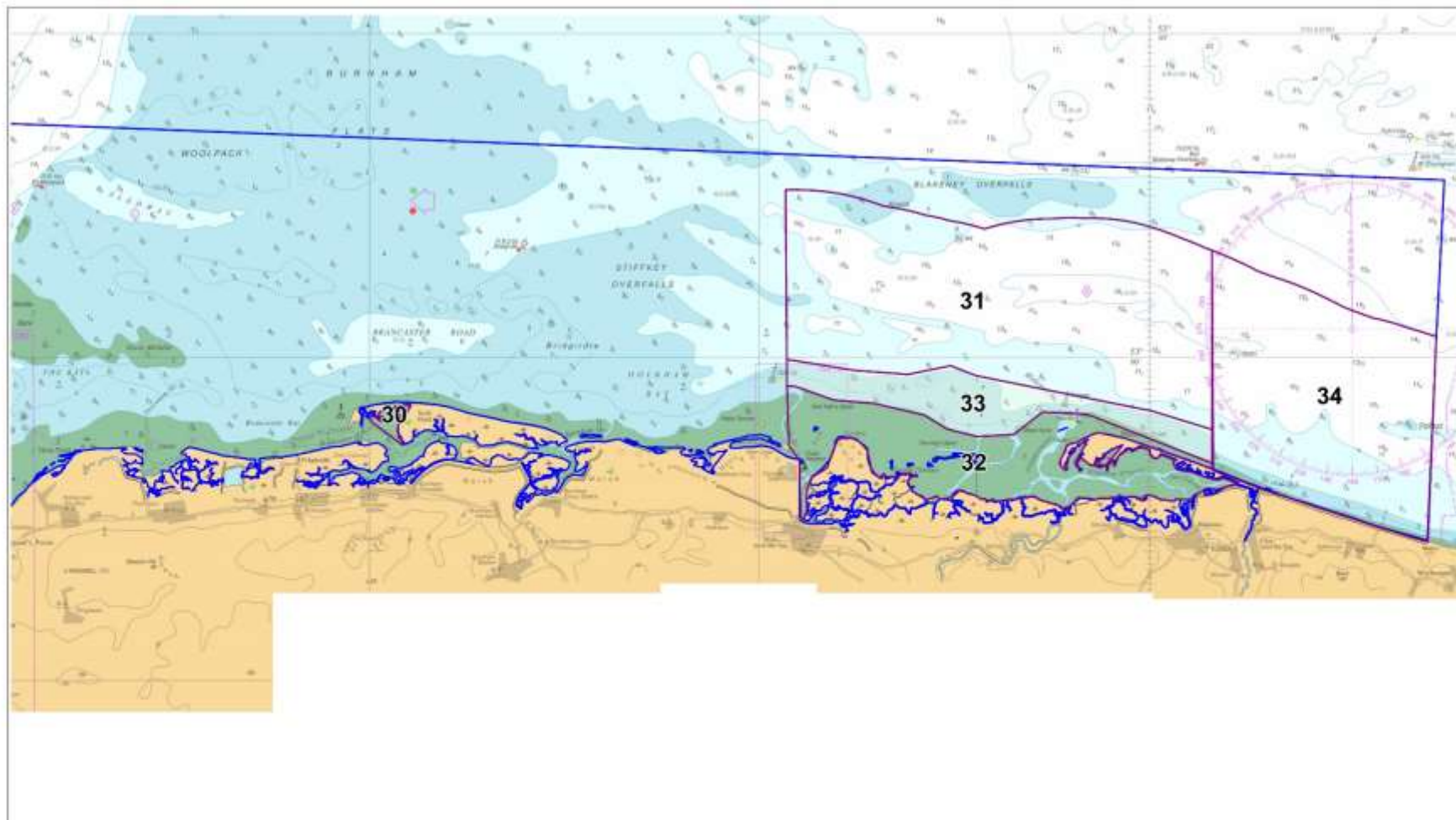


Chart 3: The Wash and North Norfolk Coast SAC – Proposed Restricted Areas 30 to 34

- Restricted area to bottom-towed gear
- The Wash and North Norfolk Coast SAC boundary
- Seasonal corridor (open to the fishery October - April)

Not to be used for navigation – for illustrative purposes only

Contains public sector information licensed under the Open Government Licence v3.0 (c) British Crown and OceanWise 2019. All rights reserved. Licence No. DK001-20180310. This product has been derived in part from material obtained from the UK Hydrographic Office with the permission of the UK Hydrographic Office, Her Majesty's Stationery Office and other relevant authorities.

Date: 01/05/2019
 Drawn by: SC
 Projection: Lat Long WSG84
 EMS boundary: JNCC download -
 UK_SACs_withMarineComponents_2103821

2019_05_Adm_NNC_Layout_Byefaw_Chart_3.WOR

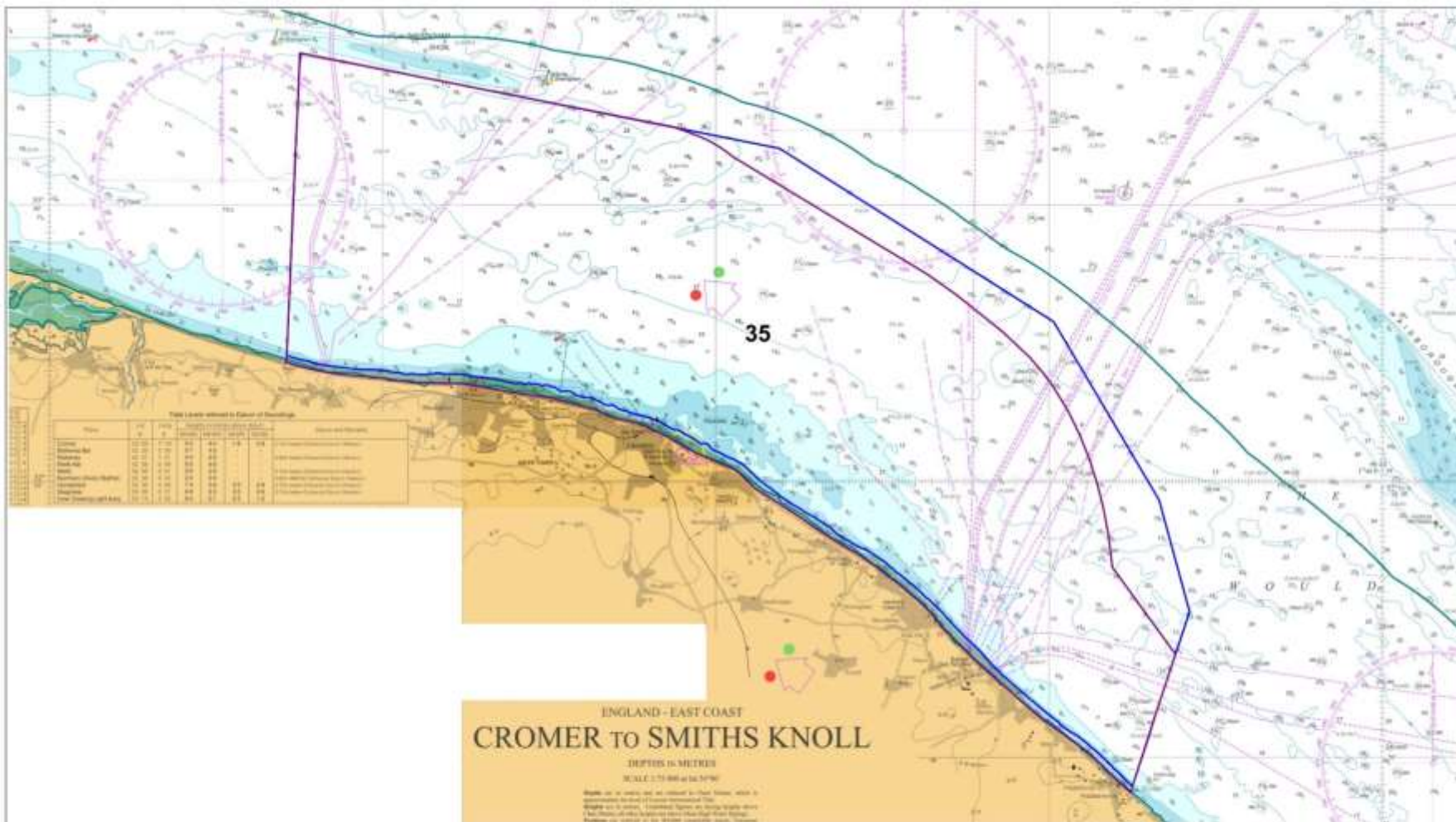


Chart 4: Cromer Shoal Chalk Beds – Proposed Restricted Area 35

- Restricted area to bottom-towed gear
- Eastern IFCA district boundary
- Cromer Shoal Chalk Beds MCZ boundary

Not to be used for Navigation – for illustrative purposes only

Contains public sector information licensed under the Open Government Licence v1.0 (c) British Crown and OceanWise 2019. All rights reserved. Licence No. E0001-20180110. This product has been derived in part from material obtained from the UK Hydrographic Office with the permission of the UK Hydrographic Office, Her Majesty's Stationery Office and other relevant authorities.

Date: 01/05/2019
 Drawn by: SC
 Projection: Lat Long WSG84
 EMS boundary: JNCC download -
 UK_SACs_withMarineComponents_2103821

2019_05_Adm_CSCB_Layout_Byelaw_Chart_4.WOR



Chart 5: Haisborough, Hammond & Winterton SAC – Proposed Restricted Areas 36 to 38

- Restricted area to bottom-towed gear
- Eastern IFCA district boundary
- Haisborough, Hammond and Winterton SAC boundary

Not to be used for Navigation – for illustrative purposes only

Contains public sector information licensed under the Open Government Licence v1.0 (c) British Crown and OceanWise 2019. All rights reserved. Licence No. 29001-20190110. This product has been derived in part from material obtained from the UK Hydrographic Office with the permission of the UK Hydrographic Office, Her Majesty's Stationery Office and other relevant authorities.

Date: 30/04/2019
 Drawn by: SC
 Projection: Lat Long WSG84
 EMS boundary: JNCC download -
 UK_SACs_withMarineComponents_2103821

2019_04_Adm_HMW_Layout_Byelow_Chart_5.WOR