

Closed Areas Byelaw 2020
Proposed new restricted areas –
informal engagement



Eastern Inshore Fisheries & Conservation Authority (Eastern IFCA) is considering new restricted areas off the Lincolnshire coast and in The Wash. We are seeking to understand what impact this management could have on sea users in these areas. This is an opportunity for you to feed into Eastern IFCA's decision-making process.

The deadline for responses is midday on 11th October 2019.

What is being proposed?

Eastern IFCA is proposing to prohibit fishing using bottom-towed gear (e.g. trawls and dredges) in certain areas off the Lincolnshire coast and an additional closure in The Wash. The areas under consideration are shown on the attached charts but the actual boundaries of the closures may be smaller and will be considered taking into account this consultation.

Why are more closed areas needed?

IFCAs must manage fisheries in a way that is compatible with conservation targets for protected areas. More than 95% of the Eastern IFCA district is protected under a conservation designation. We have assessed fisheries throughout our district and identified that we need to close certain areas to bottom-towed gear to prevent damage to the most sensitive habitats. This will help achieve the UK vision for "clean, healthy, safe, productive and biologically diverse oceans and seas".

We have already protected sensitive habitats in parts of the Humber Estuary, The Wash and the Norfolk coast using our Marine Protected Areas Byelaw. Those closures will remain in place. The habitats that will be protected in the proposed new closures are *Sabellaria spinulosa* (Ross worm) reef off the Lincolnshire coast and an area of hard sea bed (referred to as circalittoral rock) in The Wash.

Our consultation tracker can be accessed from the front page of our website at www.eastern-ifca.gov.uk/ and sets out other measures we are currently (or soon will be) consulting on.

When will it take effect?

Eastern IFCA will consider the evidence supporting the new closures, and information on the likely impact on sea users in the affected areas. If approved, the closures would take effect after a further consultation period and once the Byelaw is signed off by the Secretary of State. We anticipate that this could be in late 2020.

Where will it apply?

The restrictions would apply within all or part of the following areas (see charts):

- Within the *Inner Dowsing, Race Bank and North Ridge Special Area of Conservation (SAC)*, to the west and south of the Lynn and Inner Dowsing offshore wind farms, and
- Within *The Wash & North Norfolk Coast SAC*, one area in the Lynn Deep to the east of the top end of the Longsand.

Whilst the conservation features at these locations must be protected, the final boundaries of the closed areas can be influenced by your input at this stage.

Management beyond six nautical miles

Eastern IFCA manages fisheries within six nautical miles from coastal baselines. The majority of the *Inner Dowsing, Race Bank and North Ridge SAC* lies beyond six nautical miles. The Marine Management Organisation (MMO) has already implemented closed areas to protect *Sabellaria spinulosa* reef in parts of the SAC (details [here](#)). For further information on the offshore management, please contact the MMO.

How does it affect my activity?

If you fish using bottom towed gear in the Eastern IFCA district, you will not be able to do so in any of the restricted areas. Eastern IFCA is committed to engaging with all people potentially affected by the management we introduce, in order to fully understand impacts and achieve the best outcomes for fisheries and conservation.

Are there any other restrictions planned?

Eastern IFCA is currently examining evidence for an intertidal area of *Sabellaria* reef in The Wash where an additional closure could be required. We will consult on this separately if a closure is needed.

Where can I find more information?

The proposed restricted areas are shown in the attached charts.

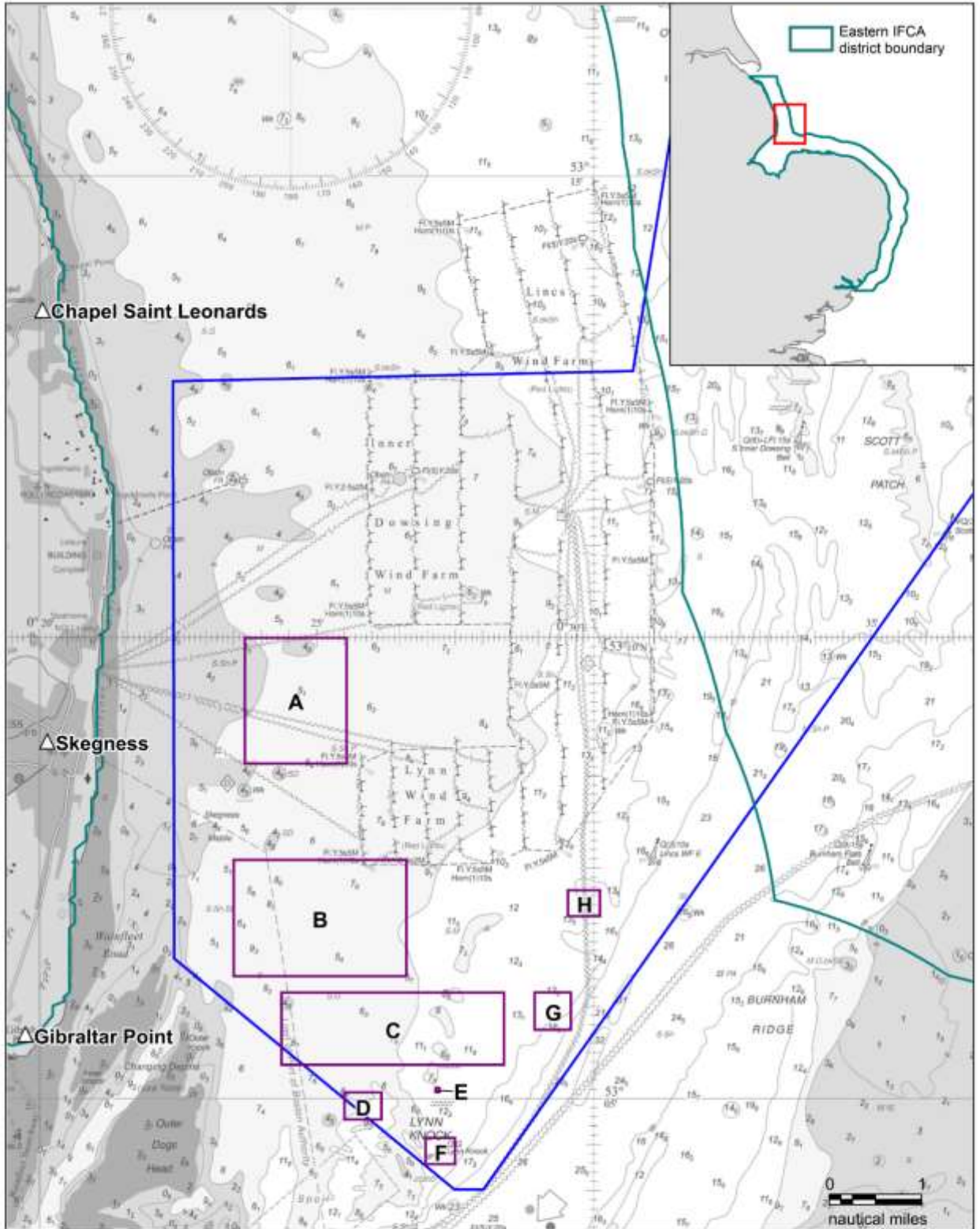
You are welcome to speak to Eastern IFCA staff in person or by telephone (01553) 775321, or by emailing mail@eastern-ifca.gov.uk


Can I make a comment?

We welcome your input. Please use the [questionnaire](#) to provide your responses to the consultation. These should be sent by **12 noon on 11th October 2019** to:

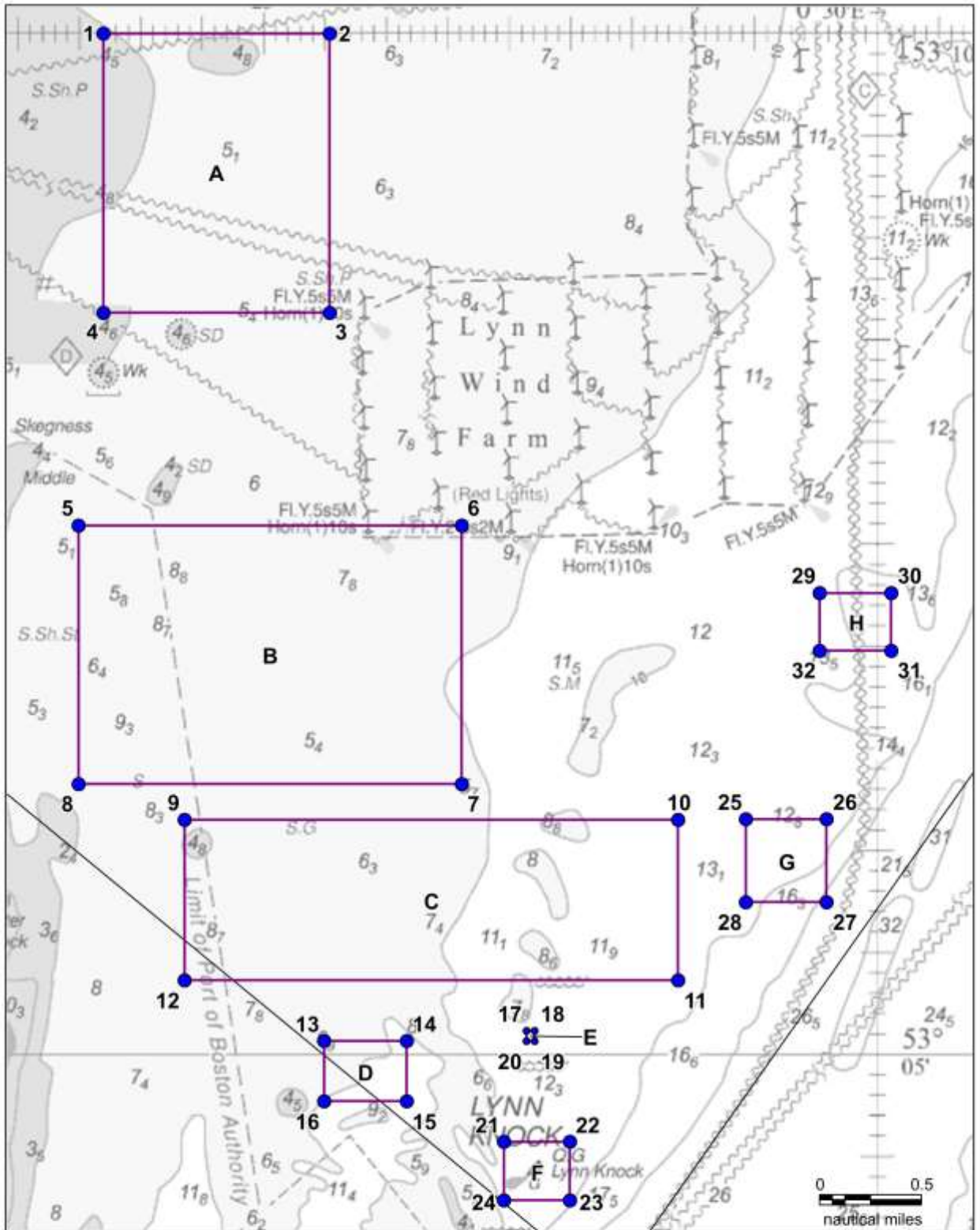
CEO, Eastern Inshore Fisheries & Conservation Authority, Unit 6 North Lynn Business Village, Bergen Way, King's Lynn, Norfolk, PE30 2JG.




Or by email to mail@eastern-ifca.gov.uk



 <p>Eastern IFCA Inshore Fisheries and Conservation Authority</p>	<p>Lincolnshire Coast: Chart 1 Proposed restrictions to bottom towed gear informal engagement chart. Not to be used for navigation, for illustrative purposes only.</p> <ul style="list-style-type: none"> Inner Dowsing, Race Bank & North Ridge SAC Management focus areas 	<p>Date: 05/09/19 Drawn by: SC Projection: Lat Long WSG84 EMS boundary: JNCC download - UK_SACs_withMarineComponents_2103821 Eastern IFCA boundary: EIFCA EIFCA focus areas: EIFCA</p> <p>2019_09_04_Informal_cmds_Layout1_IDRBNR.wor</p>
---	---	---

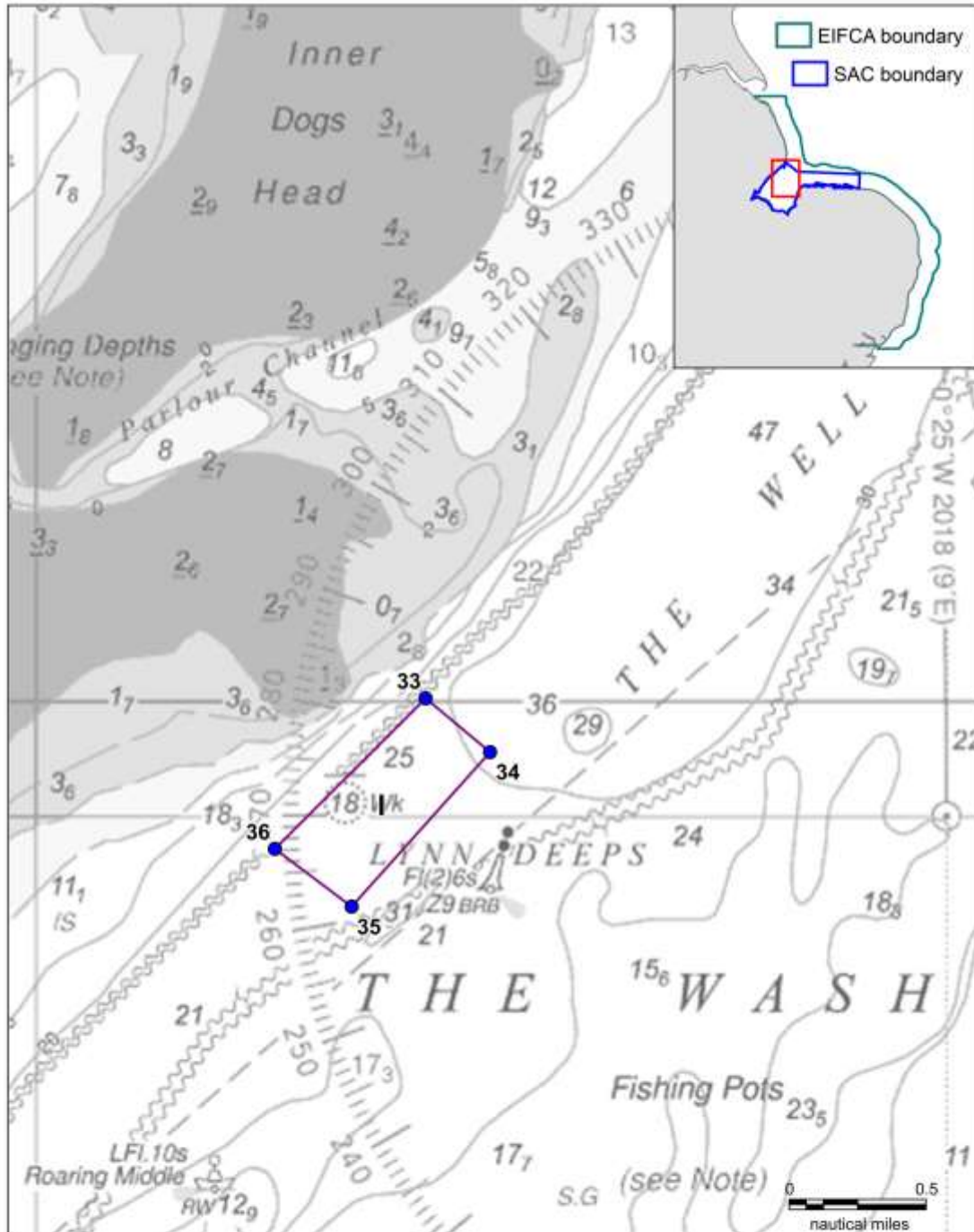
Contains public sector information licensed under the Open Government Licence v1.0 (c) British Crown and OceanWise 2019. All rights reserved. Licence No. EK001-20180110. This product has been derived in part from material obtained from the UK Hydrographic Office with the permission of the UK Hydrographic Office, Her Majesty's Stationery Office and other relevant authorities.






 <p>Eastern IFCA Inshore Fisheries and Conservation Authority</p>	<p>Lincolnshire Coast: Chart 2 Proposed restrictions to bottom towed gear informal engagement chart. Not to be used for navigation, for illustrative purposes only.</p> <p> Management focus areas</p> <p> Location points (for coordinates see Table 1)</p>	<p>Date: 05/09/19 Drawn by: SC Projection: Lat Long WSG84 EMS boundary: JNCC download - UK_SACs_withMarineComponents_2103821 Eastern IFCA boundary: EIFCA EIFCA focus areas: EIFCA 2019_09_Infomal_coms_Layout2_04RBRN.WOR</p>
---	---	--

Contains public sector information licensed under the Open Government Licence v1.0 (c) British Crown and Oceanwise 2019. All rights reserved. Licence No. EK001-20180110. This product has been derived in part from material obtained from the UK Hydrographic Office with the permission of the UK Hydrographic Office, Her Majesty's Stationery Office and other relevant authorities.

Table 1: Lincolnshire Coast Management Focus Areas					
Box ref.	ID	D.d Latitude	D.d Longitude	D M.m Latitude	D M.m Longitude
A	1	53.166525	0.394994	53° 09.99'	00° 23.70'
	2	53.166525	0.425726	53° 09.99'	00° 25.54'
	3	53.143727	0.425726	53° 08.62'	00° 25.54'
	4	53.143727	0.394994	53° 08.62'	00° 23.70'
B	5	53.126359	0.391617	53° 07.58'	00° 23.50'
	6	53.126359	0.443651	53° 07.58'	00° 26.62'
	7	53.105238	0.443651	53° 06.31'	00° 26.62'
	8	53.105238	0.391617	53° 06.31'	00° 23.50'
C	9	53.102331	0.406011	53° 06.14'	00° 24.36'
	10	53.102331	0.473029	53° 06.14'	00° 28.38'
	11	53.089204	0.473029	53° 05.35'	00° 28.38'
	12	53.089204	0.406011	53° 05.35'	00° 24.36'
D	13	53.084257	0.424979	53° 05.06'	00° 25.50'
	14	53.084257	0.436182	53° 05.06'	00° 26.17'
	15	53.07931	0.436182	53° 04.76'	00° 26.17'
	16	53.07931	0.424979	53° 04.76'	00° 25.50'
E	17	53.085077	0.452427	53° 05.10'	00° 27.15'
	18	53.085077	0.453563	53° 05.10'	00° 27.21'
	19	53.084225	0.453563	53° 05.05'	00° 27.21'
	20	53.084225	0.452427	53° 05.05'	00° 27.15'
F	21	53.076012	0.449377	53° 04.56'	00° 26.96'
	22	53.076012	0.45834	53° 04.56'	00° 27.50'
	23	53.071214	0.45834	53° 04.27'	00° 27.50'
	24	53.071214	0.449377	53° 04.27'	00° 26.96'
G	25	53.10237	0.482228	53° 06.14'	00° 28.93'
	26	53.10237	0.493191	53° 06.14'	00° 29.59'
	27	53.095583	0.493191	53° 05.73'	00° 29.59'
	28	53.095583	0.482228	53° 05.73'	00° 28.93'
H	29	53.120841	0.492251	53° 07.25'	00° 29.54'
	30	53.120841	0.501961	53° 07.25'	00° 30.12'
	31	53.11613	0.501961	53° 06.97'	00° 30.12'
	32	53.11613	0.492251	53° 06.97'	00° 29.54'



 <p>Eastern IFCA Inshore Fisheries and Conservation Authority</p>	<p>The Wash: Chart 3 Proposed restrictions to bottom towed gear informal engagement chart. Not to be used for navigation, for illustrative purposes only.</p> <p> Management focus areas</p> <p> Location points (for coordinates see Table 2)</p>	<p>Date:06/09/19 Drawn by:SC Projection: Lat Long WSG84 EHS boundary:IMCC download - UK_SACs_withMarineComponents_ 2103821 Eastern IFCA boundary: EIFCA EIFCA focus areas:EIFCA 2019_09_Infomal_corn_Layou3_WNRC.wpr</p>
---	---	--

Contains public sector information licensed under the Open Government Licence v1.0 (c) British Crown and Deakin 2019. All rights reserved. Licence No.84021-20190110. This product has been derived in part from material obtained from the UK Hydrographic Office with the permission of the UK Hydrographic Office, Her Majesty's Stationery Office and other relevant authorities.

Table 2: The Wash Management Focus Area					
Box ref.	ID	D.d Latitude	D.d Longitude	D M.m Latitude	D M.m Longitude
I	36	52.997879	0.357335	52° 59.87'	00° 21.44'
	35	52.994368	0.36508	52° 59.66'	00° 21.90'
	34	53.003775	0.379061	53° 00.23'	00° 22.74'
	33	53.007058	0.372556	53° 00.42'	00° 22.35'