

# **Ørsted - East Coast Operational Assets**

## **Notice to Mariners**

**Period of Notice: September 2020**

**Version: 5**

# Table of Contents

1	Introduction .....	4
1.1	Subsea Cables.....	4
1.2	Wind Farm Positional Data .....	4
2	Key Contacts.....	5
3	Notice to Mariners Summary:.....	6
4	Race Bank – Notice to Mariners .....	7
4.1	Lighting and Marking Status.....	7
4.2	Other Operations.....	7
4.2.1	String 1 cable Replacement .....	7
4.2.2	Above water inspections .....	10
5	Westermost Rough – Notice to Mariners .....	10
5.1	Lighting and Marking Status.....	10
5.2	Other Operations.....	10
5.2.1	Full Site Bathymetric Survey Westermost Rough .....	10
5.2.2	Above water inspections .....	11
6	Lincs – Notice to Mariners.....	12
6.1	Lighting and Marking Status.....	12
6.2	Other Operations.....	12
6.2.1	Above water inspections .....	12
7	Gunfleet Sands – Notice to Mariners .....	13
7.1	Lighting and Marking Status.....	13
7.2	Other Operations.....	13
7.2.1	Transition Piece Maintenance.....	13
7.2.2	Above water inspections .....	14
8	Hornsea One – Notice to Mariners.....	15
8.1	Lighting and Marking Status.....	15
8.2	Other Operations.....	15

8.2.1	Nearshore Export Cable – Potential exposure.....	15
8.2.2	Structural Inspections Below Water .....	17
8.2.3	Un-manned Service Vessel (USV) Survey.....	17
8.2.4	Array cable remedial work.....	19
8.2.5	Above water inspections .....	21
8.2.6	Met Mast Dredging.....	22
8.2.7	Intertidal and Nearshore quarterly survey .....	23

## 1 Introduction

Ørsted is an offshore wind farm owner and operator with ten operational wind farms in UK waters. Of these ten, the following offshore wind farms are located off the East Coast of England:

- Gunfleet Sands
- Westernmost Rough
- Race Bank
- Lincs
- Hornsea One

The purpose of this monthly Notice to Mariners (NtM) is to ensure that mariners are aware of any non-routine operations across the East Coast assets that could pose a risk to other sea users. Safety is paramount to Ørsted and this notice should assist in ensuring that both mariners and the Ørsted operational team can operate safely offshore. This NtM will provide:

- A regular, clear and consistent overview of non-routine operations
- Updates relating to lighting and marking
- Key contact details
- Access to detailed site information and figures
- Clarity on when Safety Zones and recommended safe separation distances are in force or requested



This Notice to Mariners will not provide:

- Information relating to routine maintenance carried out by Crew Transfer Vessels (CTV) or Service Operation Vessels (SOV).
- Any information relating to export cables
- Any information relating to offshore wind farms currently in development, construction or not operated by Ørsted

### Subsea Cables

Subsea cables are installed across each offshore wind farm and are marked on the KIS ORCA charts referenced in Section 1.2. Please note the following advice from NP 100 The Mariners Handbook “Every care should be taken to avoid anchoring, trawling, fishing, dredging, drilling, or carrying out any other activity in the vicinity of cables which might damage them.” This warning is repeated on all admiralty charts.

### Wind Farm Positional Data

KIS ORCA Awareness Charts (including the layout and coordinates) and Fishing Plotter Files of the offshore assets referenced in this NtM can be found via the KIS ORCA website: <http://www.kis->

[orca.eu/downloads#.XWUTQUxFwjZ](https://orca.eu/downloads#.XWUTQUxFwjZ). Should mariners require further information or any data in a format that can be used in a plotter or other device, please contact the Company Fisheries Liaison Officer, listed in Section 2 below.

## 2 Key Contacts

For further information on any of the activities listed within this notice, please use the contact details listed below.

Site	Ørsted Mailbox/ Offshore Coordination	Fisheries Industry Representative
Race Bank	Phone: 07826 943808 Email: <a href="mailto:rowoffshorec@orsted.co.uk">rowoffshorec@orsted.co.uk</a>	Ady Woods Phone: 07468 898948 Email: <a href="mailto:firwoods@hotmail.com">firwoods@hotmail.com</a>
Westermost Rough	Phone: 07867 674941 Email: <a href="mailto:wmroffshorec@orsted.co.uk">wmroffshorec@orsted.co.uk</a>	Guy Pasco Phone: 07880 362082 Email: <a href="mailto:guy@seascopefisheries.co.uk">guy@seascopefisheries.co.uk</a>
Lincs	Phone: 07766443319 Email: <a href="mailto:lincsoffshorec@orsted.co.uk">lincsoffshorec@orsted.co.uk</a>	Ady Woods Phone: 07468 898948 Email: <a href="mailto:firwoods@hotmail.com">firwoods@hotmail.com</a>
Gunfleet Sands		Merlin Jackson Phone: 07989 520484 Email: <a href="mailto:merlinjackson@btinternet.com">merlinjackson@btinternet.com</a>
Hornsea One	Phone: 07775005465 Email: <a href="mailto:HOWoffshoreC@orsted.co.uk">HOWoffshoreC@orsted.co.uk</a>	Nick Garside Phone: 07538 827013 Email: <a href="mailto:nick.garside@live.co.uk">nick.garside@live.co.uk</a>

### Company Fisheries Liaison Officer

The Ørsted Company Fisheries Liaison Officer can be contacted using the details below:

Courtney French  
Email: [CONFR@Orsted.co.uk](mailto:CONFR@Orsted.co.uk)

### 3 Notice to Mariners Summary:

Site	Lighting and Marking Status	Survey	Jack-Up Vessel	Other Works
Race Bank	OK	None	None	String 1 replacement,
Westermose Rough	OK	Bathymetric Survey	Pacific Orca**	Full site bathymetric survey, Above water Inspections.
Lincs	OK	None	None	Structural inspection below water, Above water inspections.
Gunfleet Sands	OK	Bathymetric survey,	Wind Pioneer**	External Painting Campaign° **, Above water Inspections.
Hornsea One	OK	None	None	Nearshore export cable Structural inspection below water, USV survey, Array cable remedial* , Met mast dredging°, Nearshore & Intertidal surveys.

\* Formal 500m safety zone in place

° Licensable activity

\*\* 500m safety distance requested

\*\*\* 200m safety distance requested

## 4 Race Bank – Notice to Mariners

### 4.1 Lighting and Marking Status

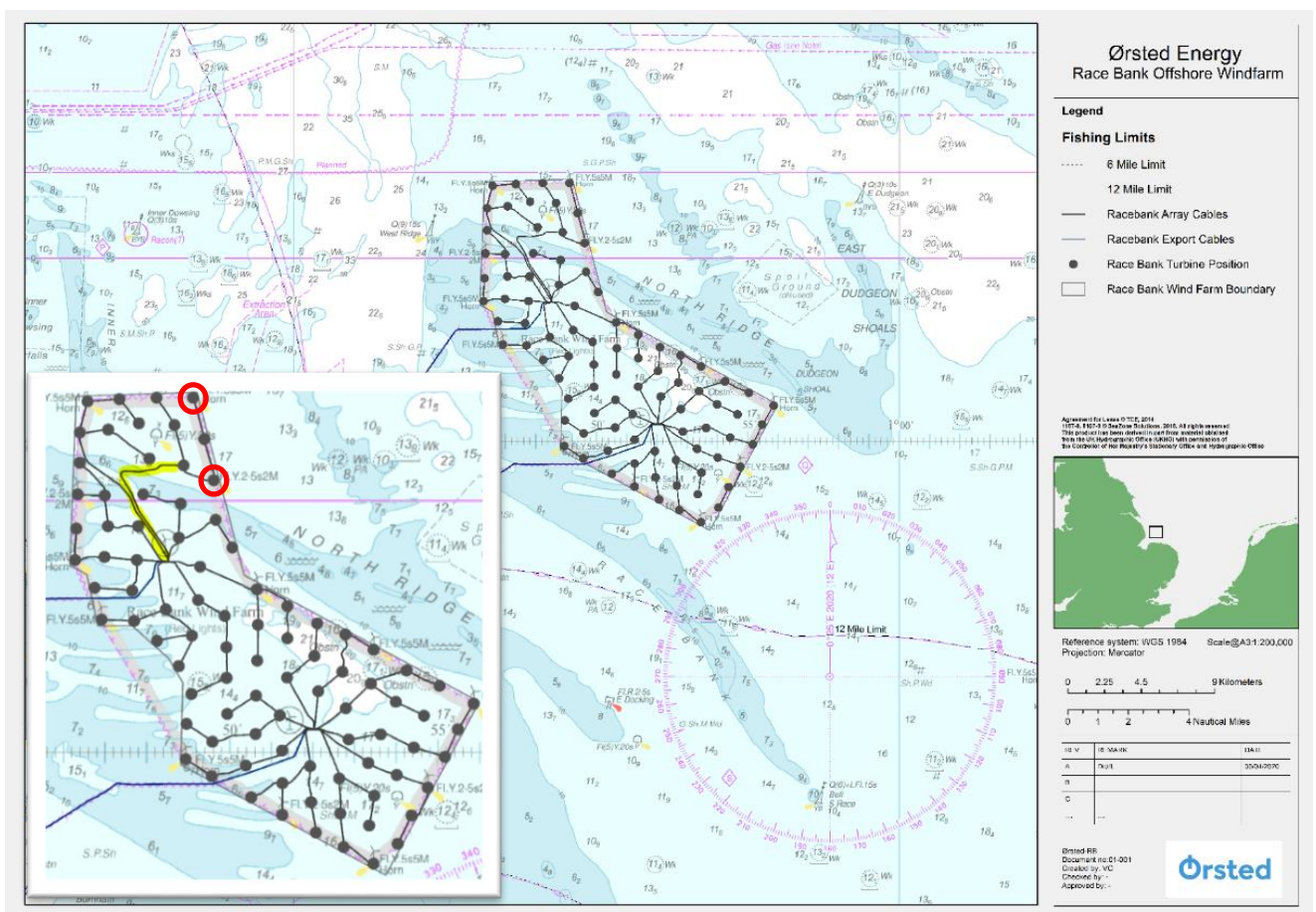
The lighting and/ or navigational warning systems are currently operational. On the 30<sup>th</sup> August once the String 1 cable replacement campaign commences (section 4.2.1) turbines D01 & E01 will not be operational. (Identified on figure 1 below)

### 4.2 Other Operations

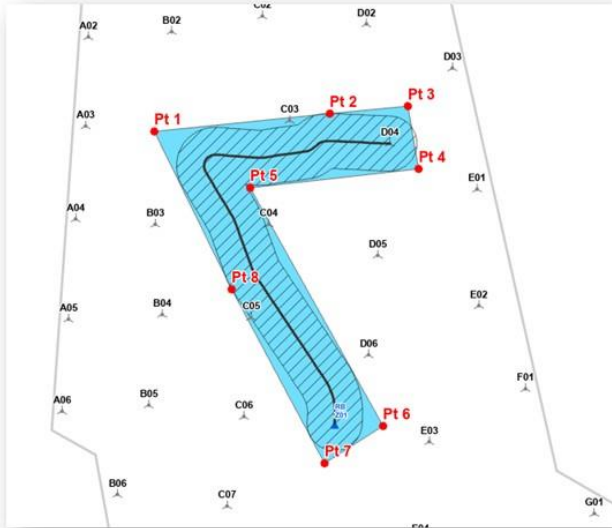
#### 4.2.1 String 1 cable Replacement

The Global Symphony will be completing String 1 cable (see & Figure 2) replacement on Racebank on or around the 20<sup>th</sup> August for approximately 28 days.

Mariners are requested to remain a safe distance of 500m from Global Symphony when it is observed undertaking String 1 replacement.



**Figure 1 Race Bank String 1 location**




**Figure 2 Race Bank String 1 replacement**


**Table 1 Coordinates of String 1**

Point ID	WGS84 (Decimal Degrees)		WGS84 (Degrees, Minutes, Seconds)		ETRS89 UTM31N (Metres)	
	Latitude	Longitude	Latitude	Longitude	Easting	Northing
1	53.31915514	0.782630381	53° 19' 08.95324846" N	000° 46' 57.46033658" E	352301	5910067
2	53.32105874	0.806520098	53° 19' 15.80621138" N	000° 48' 23.46331521" E	353899	5910229
3	53.32186137	0.817143875	53° 19' 18.69567434" N	000° 49' 01.70890916" E	354609	5910297
4	53.31676264	0.818859541	53° 19' 00.34024726" N	000° 49' 07.88530871" E	354706	5909726
5	53.31479499	0.795956169	53° 18' 53.25670756" N	000° 47' 45.43317179" E	353174	5909554
6	53.29567808	0.815100403	53° 17' 44.43583086" N	000° 48' 54.35241144" E	354384	5907389
7	53.29248035	0.807259602	53° 17' 32.92402145" N	000° 48' 26.12552908" E	353850	5907049
8	53.30645990	0.793853268	53° 18' 23.25038719" N	000° 47' 37.86272707" E	353005	5908632



## Vessel Details

General Information		Vessel Picture
Name	Global Symphony	
Flag	Norway	
Year Built	2011	
IMO Number	232025210	
Call Sign	MGJH7	
Vessel Contact Details		
Bridge	+4723671810 / +4477324980	
Party Chief	Ross Macdonald	
Email	Ross.macdonald@globalmarine.group	

General Information		Vessel Picture
Name	Rem Inspector	
Flag	Cyprus	
Year Built	2013	
IMO Number	9662083	
Call Sign	5BUR4	
Vessel Contact Details		
Bridge	++45 23 67 88 14 extension 2	
Party Chief	Ross Macdonald	
Email	<a href="mailto:captain@inspector.remoffshore.no">captain@inspector.remoffshore.no</a>	

#### 4.2.2 Above water inspections

On the 17<sup>th</sup> September we will conduct inspections within the WTG structure, it is expected to last around 30 days dependant on weather.

#### Vessel Information

General Information		Vessel Picture
Name	WEM2	
Flag	British	
Year	2018	
MMSI	232013885	
Call	MCPB7	
Vessel Contact Details		
Bridge	001 904596 3780 (Sat phone only)	
Party Chief	Agent: Torben Kuehnel: Email: <a href="mailto:torben.kuehnel@offshoreservice.de">torben.kuehnel@offshoreservice.de</a>	
Email	<a href="mailto:wem2@windenergymarine.com">wem2@windenergymarine.com</a>	

## 5 Westermost Rough – Notice to Mariners

### 5.1 Lighting and Marking Status

The lighting and/ or navigational warning systems are currently operational. No planned outages.

### 5.2 Other Operations

#### 5.2.1 Full Site Bathymetric Survey Westermost Rough

Vessel, the Deep Seapal will be undertaking a full site bathymetric survey of Westermost Rough Windfarm, this will be carried out using a hull mounted multibeam echosounder. This work is due to start on or around the 25th August and the duration will be approximately 14 days. The vessel will have a fishing liaison officer on board for some of the works.


## Vessel Information

General Information		Vessel Picture
Name	Deep Seapal	
Flag	United Kingdom	
Year Built	2014	
MMSI Number	235089472	
Call Sign	2EZU7	
Vessel Contact Details		
Bridge	+31(0)6 1322 1213	
Party Chief	Marian Cosma / Fabian van Wijk	
Email	<a href="mailto:deepseapal@deepbv.nl">deepseapal@deepbv.nl</a>	

### 5.2.2 Above water inspections

On the 10<sup>nd</sup> September we will conduct inspections within the WTG structure, it is expected to last around 6 days dependant on weather.

## Vessel Information

General Information		Vessel Picture
Name	WEM2	
Flag	British	
Year	2018	
MMSI	232013885	
Call	MCPB7	
Vessel Contact Details		
Bridge	001 904596 3780 (Sat phone only)	
Party Chief	Agent: Torben Kuehnel: Email: <a href="mailto:torben.kuehnel@offshoreservice.de">torben.kuehnel@offshoreservice.de</a>	
Email	<a href="mailto:wem2@windenergymarine.com">wem2@windenergymarine.com</a>	

## 6 Lincs – Notice to Mariners

### 6.1 Lighting and Marking Status


The lighting and/ or navigational warning systems are currently operational. No planned outages.

### 6.2 Other Operations

#### 6.2.1 Above water inspections

On the 14th September we will conduct inspections within the WTG structure, it is expected to last around 7 days dependant on weather.

#### Vessel Information

General Information		Vessel Picture
Name	WEM2	
Flag	British	
Year	2018	
MMSI	232013885	
Call	MCPB7	
Vessel Contact Details		
Bridge	001 904596 3780 (Sat phone only)	
Party Chief	Agent: Torben Kuehnel: Email: <a href="mailto:torben.kuehnel@offshoreservice.de">torben.kuehnel@offshoreservice.de</a>	
Email	<a href="mailto:wem2@windenergymarine.com">wem2@windenergymarine.com</a>	

## 7 Gunfleet Sands – Notice to Mariners

### 7.1 Lighting and Marking Status

The lighting and/ or navigational warning systems are currently operational. No planned outages.

### 7.2 Other Operations


#### 7.2.1 Transition Piece Maintenance.


Transition Piece maintenance will be undertaken on all WTG's on GFS01 + GFS02 from the 11<sup>th</sup> May for a provisional 4 months. Sequence of locations and dates are unavailable as works will be weather dependant and coordinated to ensure no conflict with routine maintenance operations.

**We request Mariners observe a safe distance from the affected turbine(s) while works are being carried out.**

The CTV's "Discovery and Endeavour" will act as Guard Vessels during the maintenance programme with the vessel broadcasting the Turbine ID, establishment/cancellation of the safety zones and seeking contact with marine traffic approaching or nearing the areas on VHF Channel 16 and 12.

### Vessel Information


General Information		Vessel Picture
Name	Discovery	
Flag	British	
Year Built	2012	
MMSI Number	235096731	
Call Sign	2GEQ9	
Vessel Contact Details		
Bridge	07791180629	
Party Chief	A Brown + L Devaney	
Email	<a href="mailto:nsdiscovery@northsealogistics.co.uk">nsdiscovery@northsealogistics.co.uk</a>	

General Information		Vessel Picture
Name	Pura vida	
Flag	British	
Year	2009	
MMSI	235087893	
Call Sign	2ESX5	
Vessel Contact Details		
Bridge	07791180629	
Party Chief	R King + J Prytherch	
Email	puravida@northsealogistics.co.uk	

### 7.2.2 Above water inspections

On the 14-15<sup>th</sup> November we will conduct inspections within the WTG structure, it is expected to last until December.

#### Vessel Information

General Information		Vessel Picture
Name	WEM2	
Flag	British	
Year	2018	
MMSI	232013885	
Call	MCPB7	
Vessel Contact Details		
Bridge	001 904596 3780 (Sat phone only)	
Party Chief	Agent: Torben Kuehnel: Email: <a href="mailto:torben.kuehnel@offshoreservice.de">torben.kuehnel@offshoreservice.de</a>	
Email	<a href="mailto:wem2@windenergymarine.com">wem2@windenergymarine.com</a>	



## 8 Hornsea One – Notice to Mariners

### 8.1 Lighting and Marking Status

The lighting and/ or navigational warning systems are currently operational. No planned outages.

### 8.2 Other Operations

#### 8.2.1 Nearshore Export Cable – Potential exposure.

A potential nearshore Export Cable exposure has been identified (as shown in Figure 3)

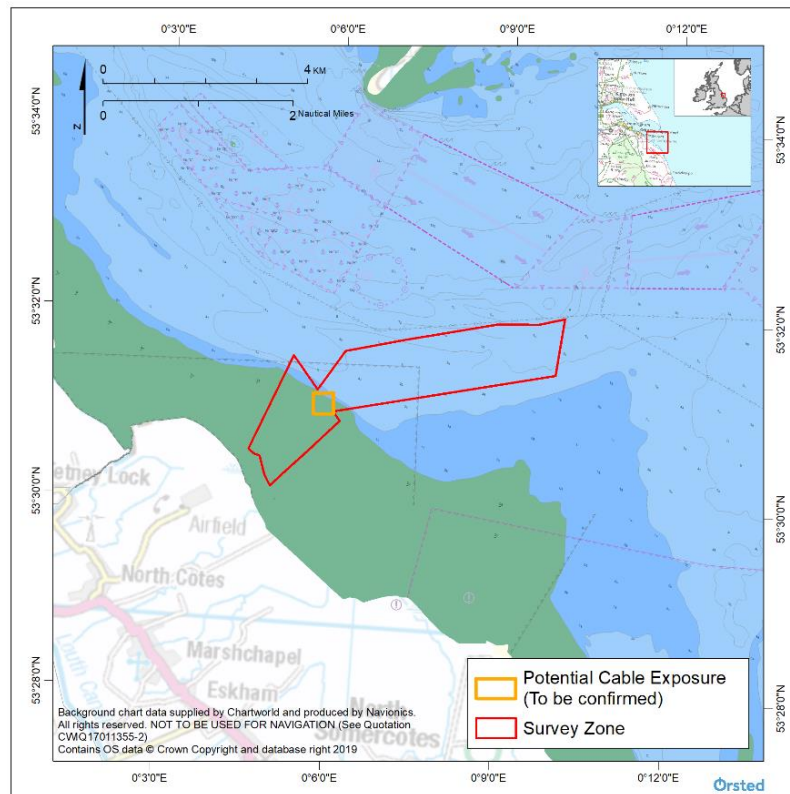
Mariners are advised that Hornsea Project are reviewing the geophysical survey data from along the nearshore part of offshore export cable corridor.

Work is planned to re-bury the exposed cable via CFE between the 1<sup>st</sup> September and 10<sup>th</sup> September 2020 by Coastal Challenger. This will be done over 2 passes between these dates.

#### Vessel Information

General Information		Vessel Picture
Name	Coastal Challenger	
Flag	Dutch	
Year Built	2012	
IMO/MMSI	9647320 // 244913000	
Call Sign	PBOC	
Vessel Contact Details		
Bridge	Mob + 31 13 6 05 784	
Party Chief	-	
Email	<a href="mailto:challenger@coastalworkboats.com">challenger@coastalworkboats.com</a>	

**Figure 3 Location of nearshore exposed cable at Hornsea One**



The Coordinates of the work site are as follows:

0° 4,832' E	53° 30,258' N
0° 4,779' E	53° 30,361' N
0° 4,752' E	53° 30,421' N
0° 4,735' E	53° 30,452' N
0° 4,731' E	53° 30,455' N
0° 4,727' E	53° 30,459' N
0° 4,725' E	53° 30,460' N
0° 4,705' E	53° 30,464' N
0° 4,694' E	53° 30,467' N
0° 4,639' E	53° 30,478' N
0° 4,560' E	53° 30,509' N
0° 4,524' E	53° 30,531' N

0° 5,263' E	53° 31,533' N
0° 5,401' E	53° 31,425' N
0° 5,709' E	53° 31,184' N
0° 5,735' E	53° 31,207' N
0° 6,181' E	53° 31,601' N
0° 7,206' E	53° 31,738' N
0° 8,855' E	53° 31,942' N
0° 9,278' E	53° 31,952' N
0° 9,559' E	53° 31,954' N
0° 9,646' E	53° 31,967' N
0° 9,751' E	53° 31,983' N
0° 9,861' E	53° 31,999' N

0° 9,945' E	53° 32,011' N
0° 10,041' E	53° 32,024' N
0° 9,915' E	53° 31,427' N
0° 6,046' E	53° 30,963' N
0° 5,998' E	53° 30,957' N
0° 6,120' E	53° 30,862' N
0° 5,580' E	53° 30,538' N
0° 5,130' E	53° 30,268' N
0° 4,933' E	53° 30,150' N
0° 4,883' E	53° 30,197' N
0° 4,851' E	53° 30,231' N
0° 4,832' E	53° 30,258' N




### 8.2.2 Structural Inspections Below Water

Structural inspections will be taking place on Hornsea 1 windfarm on or around the 14<sup>th</sup> August for approximately 2 days.

Mariners are requested to remain a distance of 500m from HBC Achiever when it is observed undertaking diving work in HOW01, during this period divers will be in the water around the vessel. The proposed end date of this work is 15<sup>th</sup> August

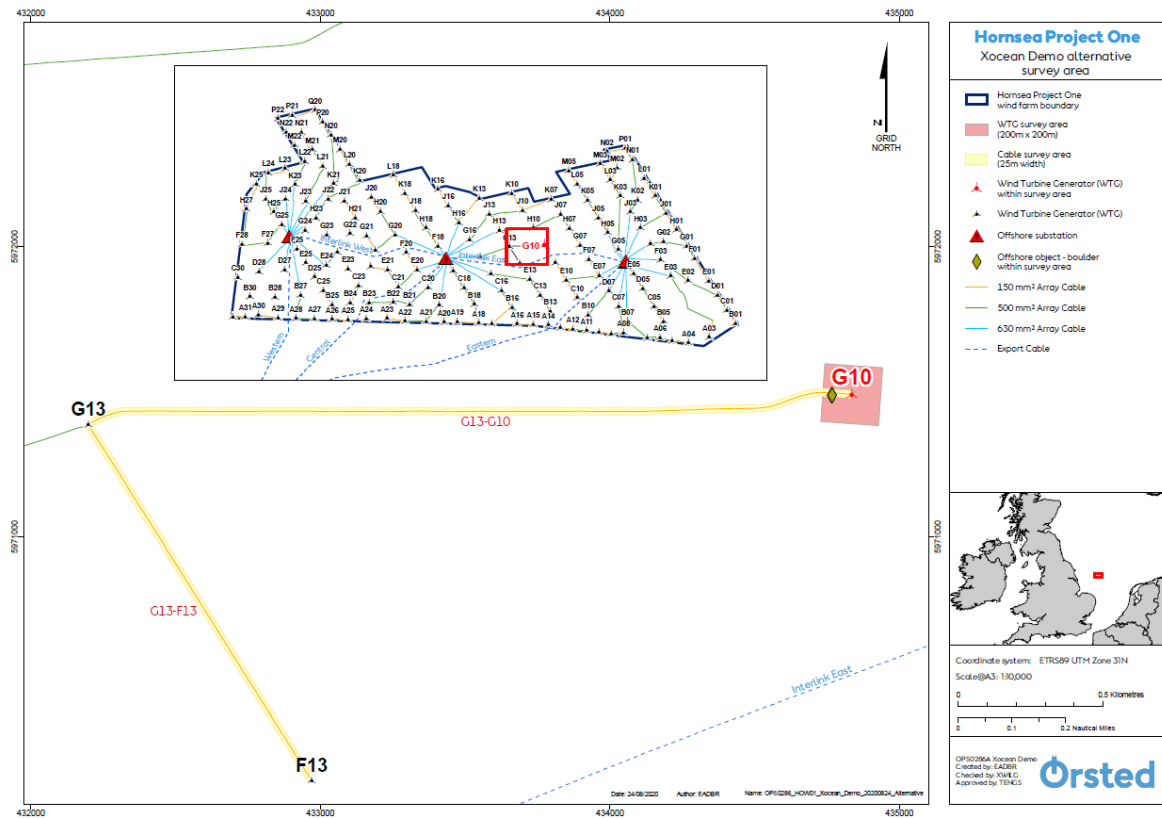
#### Vessel Information

General Information		Vessel Picture
Name	HBC Achiever	
Flag	DENMARK	
Year Built	2014	
IMO/MMSI	9647978 / 219305000	
Call Sign	OWMH2	
Vessel Contact Details		
Bridge	+45 28 56 47 99 / +45 28 56 47 99	
Party Chief	Rafal Nierzwicki	
Email	<a href="mailto:achieverbridge@hbc-tec.dk">achieverbridge@hbc-tec.dk</a>	

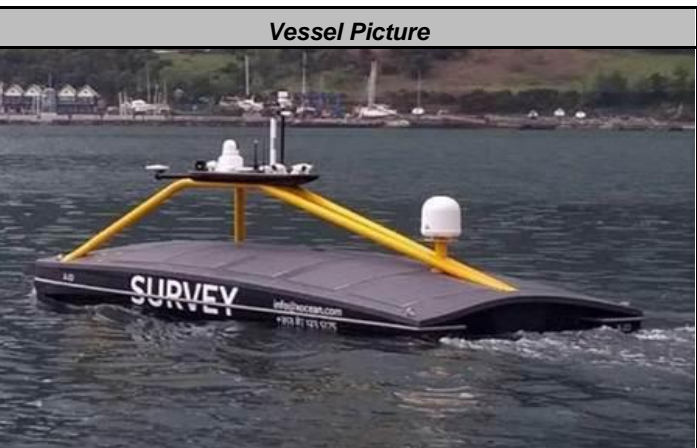
### 8.2.3 Un-manned Service Vessel (USV) Survey

A survey of a USV will take place at HOW01 from the 1st – 4th September. It is operational 24hrs a day. The USV is 4.5m long and driven remotely by a USV pilot. It will be mobilized with GPS, MultiBeam EchoSounder (MBES) and Parametric EchoSounder (PES) for survey, as well as AIS, thermal imaging and light cameras, active radar reflector, and lights, for navigation.

Figure 5



## Vessel Information

General Information		
Name	X 09	
Flag	UK	
Year Built	2020	
IMO/MMSI	232027632	
Call Sign	MHIJ8	
Vessel Contact Details		
Bridge	Mike Lewis: +353 87 796 4958	
Party Chief	Tom Davenport: +44 7759 237 524	
Email	<a href="mailto:operations@xocean.com">operations@xocean.com</a>	


## 8.2.4 Array cable remedial work

Remedial work will take place on HOW01 String 7 between locations Z13-F03 & F03-E02 shown on figure 1 below. Work is due to commence on 27<sup>th</sup> August 2020 until the end of September 2020.

Mariners must observe an approved safety zone of 500m whenever The Livingstone is next to an OSS or WTG. A minimum separation distance of 500m is also requested when the vessel is observed manoeuvring into position.

### Vessel Information

General Information		Vessel Picture
Name	Living Stone	
Flag	Netherlands	
Year Built	2017	
IMO/MMSI	IMO 9776925	
Number	MMSI 244010952	
Call Sign	PBXN	
Vessel Contact Details		
Bridge (Captain)	+49 42151 7219 1963	
Party Chief OIM	+49 421 517 219 1962	
Email	<a href="mailto:Bridge.Livingstone@ships.deme-group.com">Bridge.Livingstone@ships.deme-group.com</a>	


General Information		Vessel Picture
Name	Skandi Constructor	
Flag	Bahamas	
Year Built	2009	
IMO/MMSI Number	IMO 9431642 MMSI 311 055 900	
Call Sign	C6ZH8	
Vessel Contact Details		
Bridge	+47 23 67 77 30	
Party Chief OIM	+47 23 67 77 30 Extension 219	
Email	<a href="mailto:constructor.captain@constructor.dof.no">constructor.captain@constructor.dof.no</a>	



### 8.2.5 Above water inspections

On the 18<sup>th</sup> September we will conduct inspections within the WTG structure, it is expected to last until December.

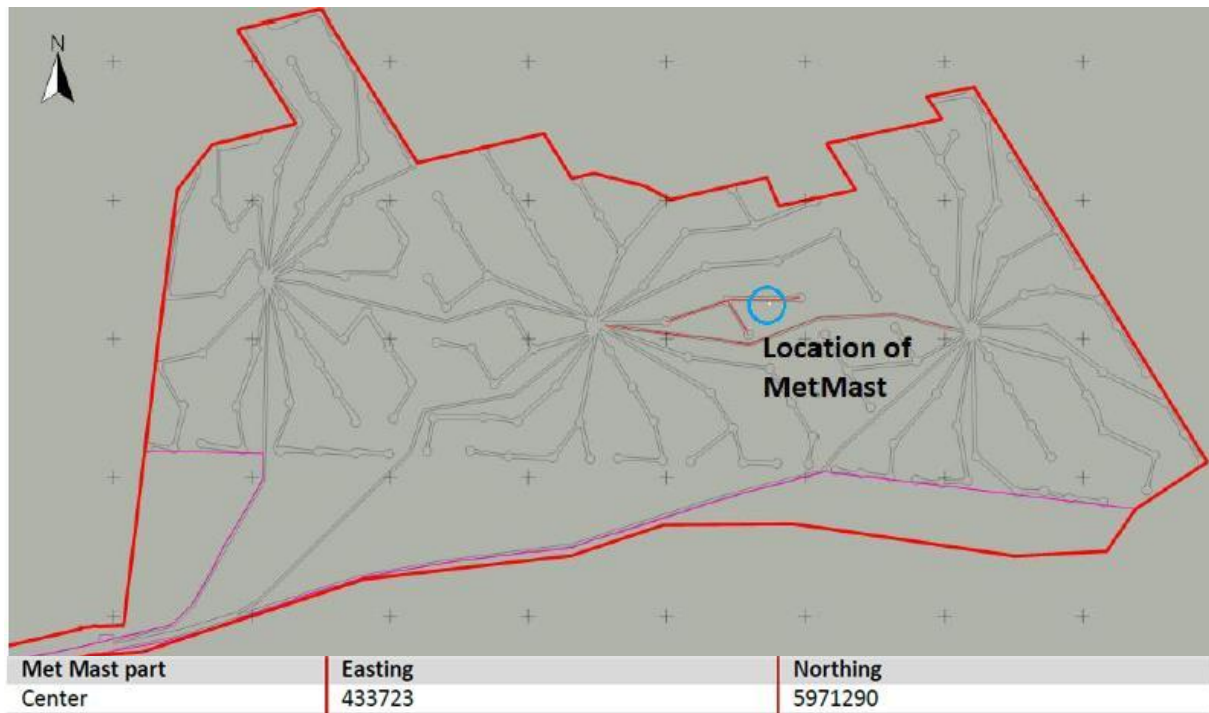
#### Vessel Information

General Information		Vessel Picture
Name	WEM2	
Flag	British	
Year	2018	
MMSI	232013885	
Call	MCPB7	
Vessel Contact Details		
Bridge	001 904596 3780 (Sat phone only)	
Party Chief	Agent: Torben Kuehnel: Email: <a href="mailto:torben.kuehnel@offshoreservice.de">torben.kuehnel@offshoreservice.de</a>	
Email	<a href="mailto:wem2@windenergymarine.com">wem2@windenergymarine.com</a>	


## 8.2.6 Met Mast Dredging

Between the 7<sup>th</sup> to 21<sup>st</sup> September there will be some dredging work taking place around the Met Mast central caisson.

**Figure 7**



## Vessel Information

General Information		Vessel Picture
Name	Skandi Constructor	
Flag	Bahamas	
Year Built	2009	
IMO/MMSI	IMO 9431642	
Number	MMSI 311 055 900	
Call Sign	C6ZH8	
Vessel Contact Details		
Bridge	+47 23 67 77 30	
Party Chief	+47 23 67 77 30	
OIM	Extension 219	
Email	<a href="mailto:constructor.captain@constructor.dof.no">constructor.captain@constructor.dof.no</a>	



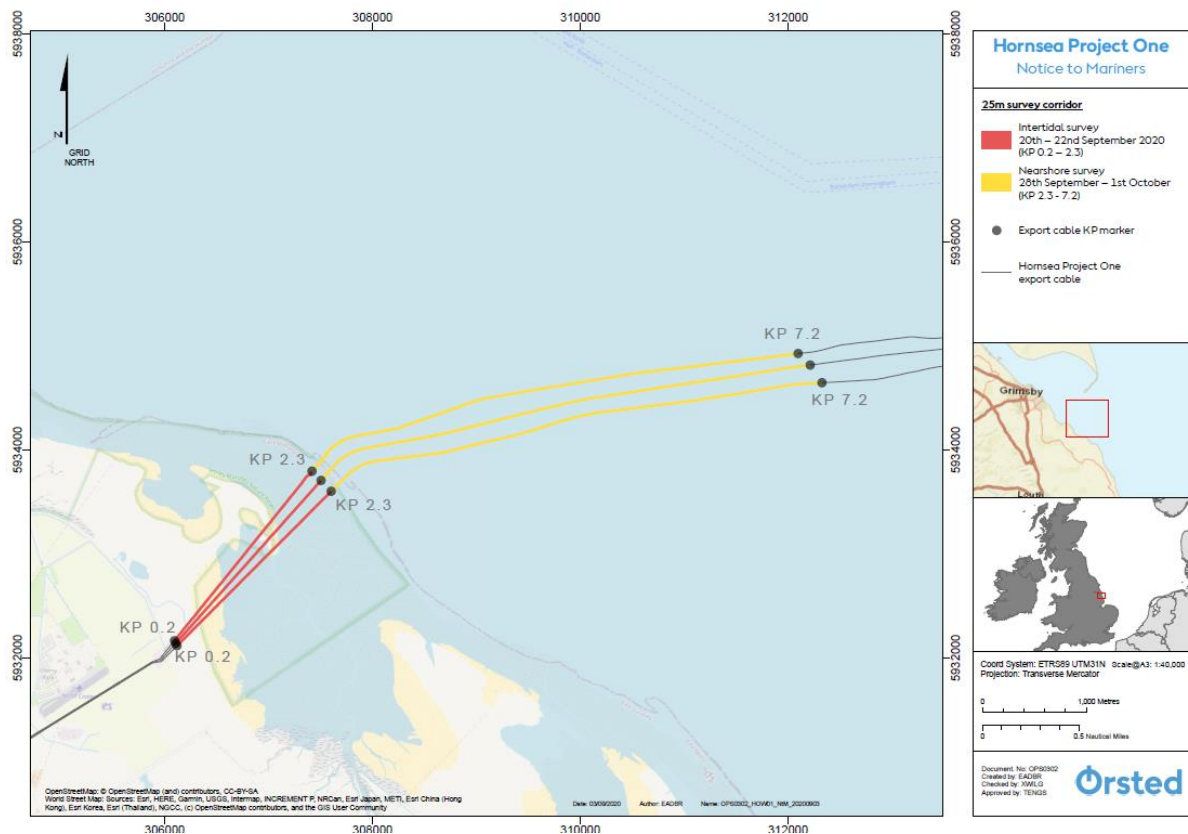
### 8.2.7 Intertidal and Nearshore quarterly survey

We will conduct an intertidal survey between 20<sup>th</sup>-22<sup>nd</sup> September with an All-Terrain Vehicle. A nearshore survey will be performed between the 28<sup>th</sup> September- 1<sup>st</sup> October.

#### All-Terrain Vehicle




**Figure 8**



## Vessel Information

General Information		Vessel Picture
Name	Spectrum 1	
Flag	UK	
Year Built	2009	
MMSI Number	235075021	
Call Sign	2CQX3	
Vessel Contact Details		
Bridge	07538565561	
Party Chief	Luca Pitt	
Email	<a href="mailto:spectrum1@spectrum-offshore.com">spectrum1@spectrum-offshore.com</a>	

General Information		Vessel Picture
Name	Spectrum 2	
Flag	UK	
Year Built	2013	
MMSI Number	235097363	
Call Sign	2GHE5	
Vessel Contact Details		
Bridge	07538562919	
Party Chief	Luca Pitt	
Email	<a href="mailto:spectrum2@spectrum-">spectrum2@spectrum-</a>	