



Notice to Mariners – Hornsea Project Two

Notice of Substation Jacket Foundation Installation Activities – UPDATE 27/09/20

1. INTRODUCTION

Mariners are advised that Ørsted will be commencing installation of the Offshore Substation (OSS) jacket and Reactive Compensation Station (RCS) jacket within the Hornsea Project Two Offshore Wind Farm area as shown in Figure 2 on or around the 29th September 2020.

2. AREA OF OPERATIONS

Activities are being carried out within the Hornsea Project Two Offshore Wind Farm area as shown in Figure 2. Mariners are advised that MaxSea and Olex plotter files of the proposed works area can be provided by the Project's Commercial Fisheries Advisors at Brown and May Marine Limited and the Project's onshore fisheries liaison. Contact details are provided in Section 5 of this Notice.

Note that these works will be carried out alongside ongoing survey operations using the MHO Grimsby as well as ongoing construction activities across the site for Hornsea Project Two.

Figure 1. Fisheries Clearance Area

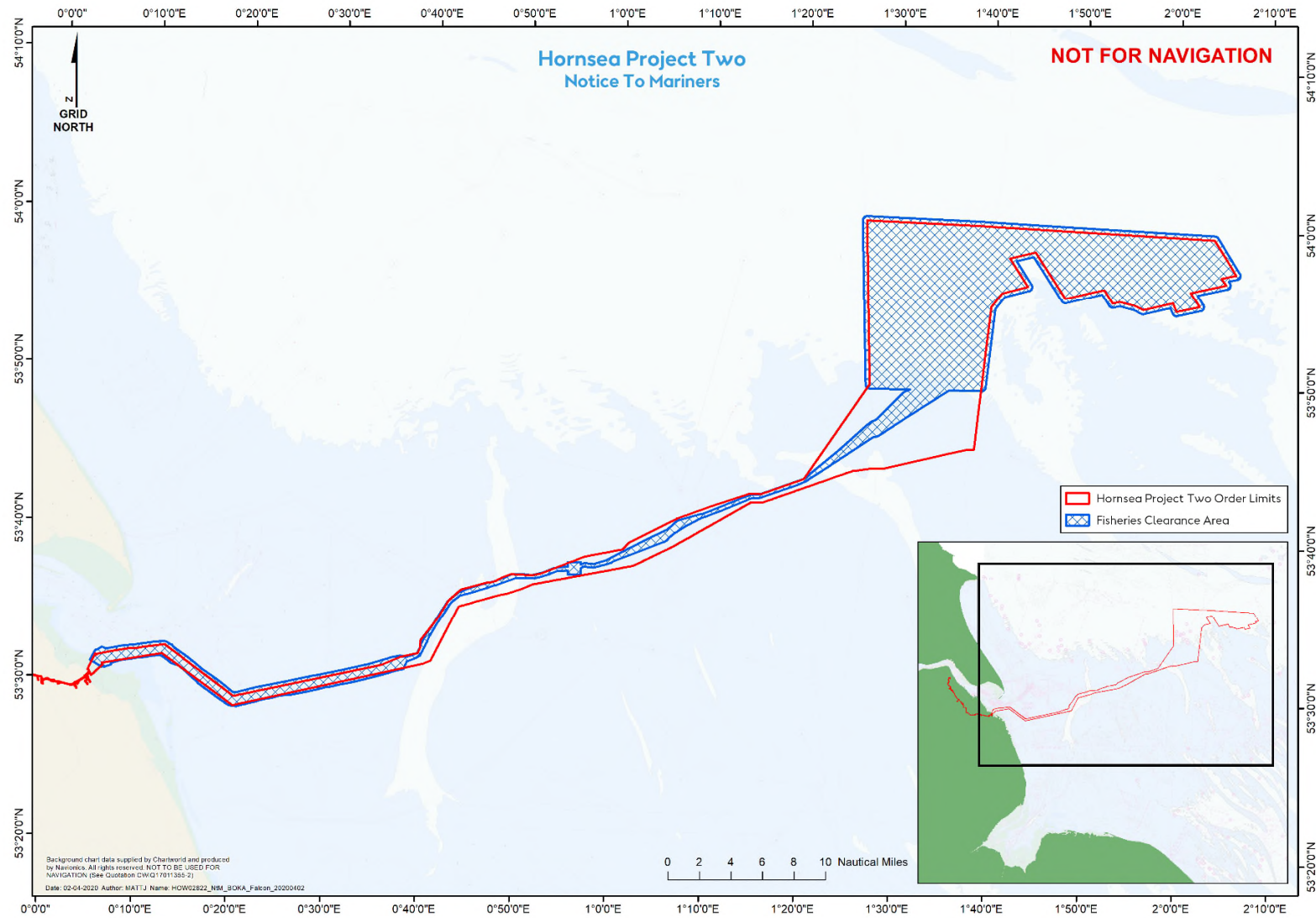
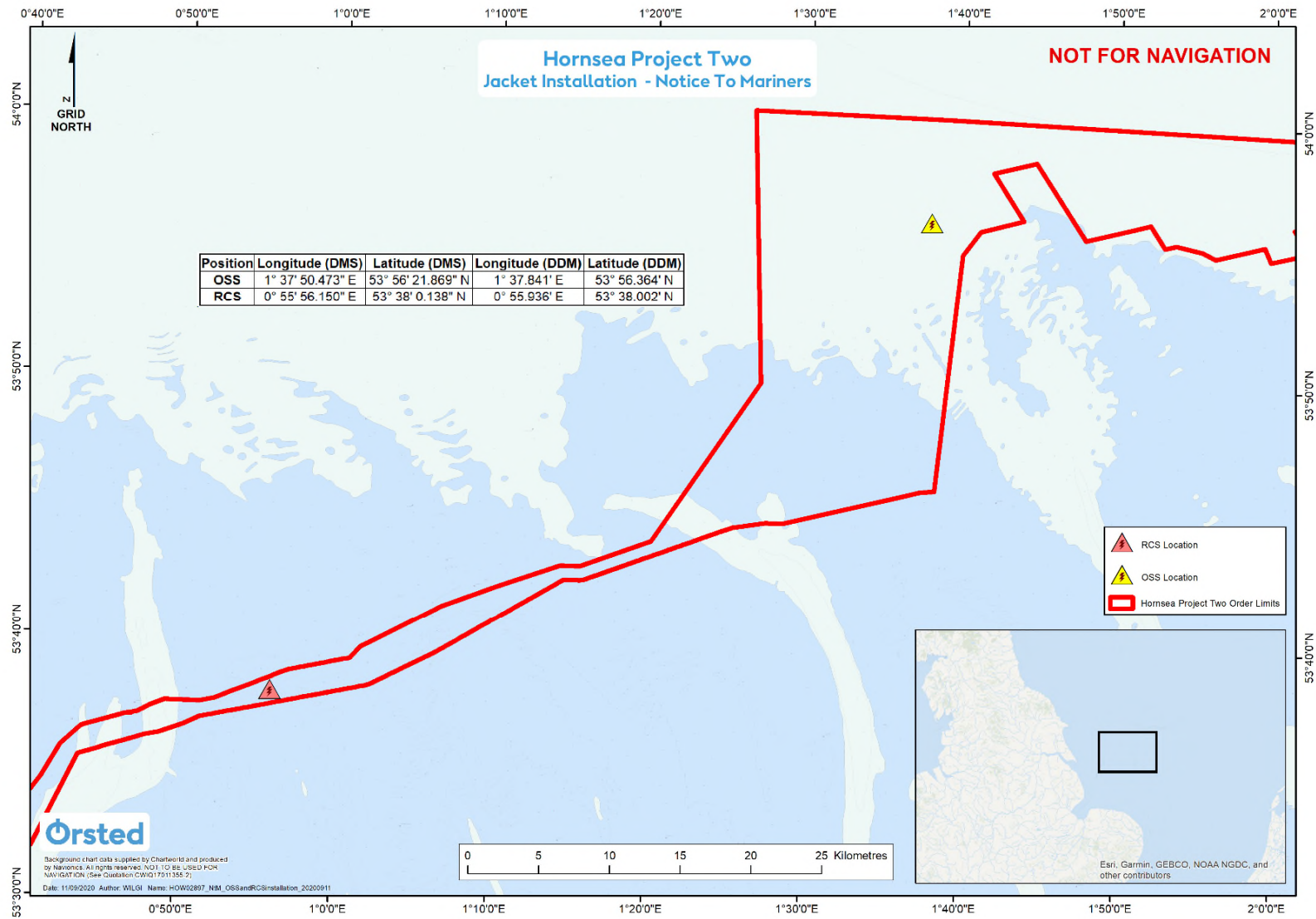


Figure 2. Proposed installation locations



3. PROPOSED ACTIVITIES

3.1 Offshore Substation and Reactive Compensation Station Installation

Please be advised that Heerema Marine Contractors (HMC) will be commencing installation of the Offshore Substation (OSS) jacket on or around 29th September 2020 and the installation of the Reactive Compensation Station (RCS) jacket on or around 3rd October 2020, with the Sleipnir Crane Vessel and Barentsz Heavy Transport Vessel. The Byglia will also pre-deploy anchors for the arrival of the installation vessels on or around 27th September in the vicinity of the installation locations.

Works will be continual and intermittent throughout this period and are expected to be complete by 21st October 2020. Additionally, fixed noise monitoring equipment will be positioned within the Order Limits at select distances from the OSS during installation to carry out noise monitoring of the works. The works will be undertaken by a number of vessels at different times according to the Project schedule. Details of the vessels are provided in Section 6. When the works are complete, this Notice will be updated and re-issued.

Note that the vessels will have limited manoeuvrability and it is requested that all vessels operating near the vessels maintain a safe distance (at least 500m) and pass all vessels at minimum speed.

3.2 Safety

It is requested that anybody having knowledge of any potential objects submerged or moored on the seabed within the survey area that could be damaged or form a hazard to the vessel and its equipment advises the Project's Fishing Industry Liaison of their position and nature. The Project has also requested the clearance of static fishing gear within the boundary shown in Figure 1 with coordinates provided in Section 7 of this Notice. When surveys commence a listening watch will be maintained on VHF Channel 12 and 16 when within the appropriate port authority area and will actively transmit an AIS signal.

The subsurface hydrophones will be positioned and marked with a yellow surface marker buoy and light Fl (5) Y 20s light character.

4. IMMEDIATE CONTACTS

The contents of this notice are based upon our current understanding of Project Two requirements. A further notice will be issued once activities are completed.

Enquiries regarding the contents of this Notice to Mariners or any other matters should be directed to:

Project Manager (Ørsted) (Office hours only)	Garry Blowers	
	Tel: +44 77 6 9147710	E-mail: GARBL@orsted.co.uk
Project Manager (Heerema Marine Contractors) (Office hours only)	John Bouwman	
	Tel: +31 [0]71 5799699	E-mail: jbouwman@hmc-heerema.com

5. FISHERIES LIAISON

Onshore Fisheries Liaison is provided by Nick Garside and Sophie Farenden who can be contacted on:

E-mail: nick.garside@live.co.uk	Mob: +44 (0) 7538 827013
Email: sophie.farenden@brownmay.com	Mob: +44 (0)7525 128344


An Offshore Fisheries Liaison Officer is onboard the Rollingstone scour protection installation vessel, contactable on VHF channel 16, if required.

In the event the Offshore or Onshore Fisheries Liaison is not contactable please direct fisheries enquiries related to the works to the Ørsted Company Fisheries Liaison Officer:

Company Fisheries Liaison Officer – Courtney French	Tel: +44 (0)7796 447372	E-mail: CONFR@orsted.co.uk
--	-------------------------	--

6. VESSELS

Operations will be conducted by the vessels as provided below. Additional vessels may mobilise to site as required. Contact can be made directly with the vessels, where necessary, using the contact details listed below. This Notice will be updated with further contact details once confirmed. Client and contractor contact details are provided in Section 4 and 5 of this NtM.

Vessel Details – Sleipnir	
 <p>© Paul Misje MarineTraffic.com</p>	
Vessel Type / Function	Heavy Lift Crane Vessel
Vessel telephone	V-sat: +870 437 48 8710 Phone: +31 71 579 9005 ext 1
Vessel email	bridge@Sleipnir.hmc-heerema.com
Call Sign	3FER4
MMSI	9781425

Vessel Details – Biglift Barentsz



© RIA MAAT
MarineTraffic.com

Vessel Type / Function	Heavy Transport Vessel
Vessel email	bigliftbarentsz@bigliftshipping.com
Call Sign	PCPC
MMSI	244830430

Vessel Details – Bylgia



© jack.ronalds
MarineTraffic.com

Vessel Type / Function	Anchor Handling Tug
Vessel telephone	V-Sat: +87 077 316 5896 +87 078 316 5334 Phone: +31 71 579 9003
Vessel email	captain@bylgia.hmc-heerema.com
Call Sign	PBMQ
MMSI	9646314

Vessel Details – CBO Supporter



Vessel Type / Function	Bubble Curtain Tug
Vessel telephone	V-Sat: +44 2036089295 Phone: +44 2036089295
Vessel email	bridge.cbosupporter@fletcher-group.com
Call Sign	MCEH2
MMSI	9448528

Vessel Details – Merel G



Vessel Type / Function	Heavy Transport Vessel
Vessel telephone	V-Sat: +31 (0) 108906674 + 31 (0) 108906675
Vessel email	merelg.bridge@rederijgroen.nl
Call Sign	HO6511
MMSI	9782285

Vessel Details – MMS Supreme	
	
Vessel Type / Function	Noise Monitoring Vessel
Vessel telephone	V-Sat: 00881632647524 Mob: 07741576452
Vessel email	mmssupreme@mms-offshore.co.uk
Call Sign	2HGZ5
MMSI	235103595

7. COORDINATES

Shown in Figure 2 – Proposed installation locations

Position	Longitude (DMS)	Latitude (DMS)	Longitude (DDM)	Latitude (DDM)
OSS	1° 37' 50.473" E	53° 56' 21.869" N	1° 37.841' E	53° 56.364' N
RCS	0° 55' 56.150" E	53° 38' 0.138" N	0° 55.936' E	53° 38.002' N

Shown in Figure 1 – Fisheries Clearance Area

Latitude (WGS84)	Longitude (WGS84)
53° 59' 47,212" N	2° 4' 13,879" E
53° 57' 33,751" N	2° 6' 35,650" E
53° 57' 15,701" N	2° 6' 36,035" E
53° 57' 6,478" N	2° 6' 18,896" E
53° 56' 59,777" N	2° 5' 28,497" E
53° 56' 42,915" N	2° 5' 36,351" E
53° 56' 28,883" N	2° 5' 17,519" E
53° 56' 3,483" N	2° 2' 8,588" E
53° 55' 27,479" N	2° 2' 46,083" E
53° 55' 15,410" N	2° 2' 44,720" E
53° 55' 6,438" N	2° 2' 32,255" E
53° 54' 43,304" N	1° 59' 50,397" E
53° 54' 49,180" N	1° 59' 21,898" E

Latitude (WGS84)	Longitude (WGS84)
53° 55' 12,752" N	1° 59' 2,060" E
53° 54' 48,758" N	1° 56' 10,242" E
53° 55' 4,977" N	1° 55' 8,846" E
53° 55' 17,637" N	1° 53' 38,207" E
53° 55' 12,551" N	1° 52' 45,906" E
53° 55' 19,225" N	1° 52' 28,565" E
53° 56' 0,723" N	1° 51' 42,606" E
53° 55' 28,077" N	1° 47' 37,142" E
53° 55' 35,546" N	1° 47' 20,574" E
53° 58' 20,012" N	1° 44' 17,211" E
53° 58' 5,598" N	1° 42' 39,466" E
53° 56' 39,567" N	1° 44' 13,897" E
53° 56' 25,332" N	1° 44' 17,657" E
53° 56' 11,448" N	1° 43' 56,913" E
53° 55' 46,244" N	1° 41' 19,719" E
53° 55' 1,973" N	1° 40' 23,796" E
53° 50' 2,447" N	1° 39' 30,939" E
53° 49' 49,003" N	1° 39' 16,731" E
53° 49' 46,428" N	1° 35' 32,259" E
53° 46' 48,702" N	1° 28' 4,620" E
53° 46' 42,946" N	1° 27' 31,338" E
53° 43' 49,843" N	1° 20' 24,581" E
53° 42' 44,084" N	1° 15' 38,529" E
53° 42' 41,344" N	1° 14' 42,628" E
53° 41' 21,520" N	1° 9' 20,997" E
53° 40' 22,700" N	1° 6' 37,474" E
53° 39' 47,066" N	1° 5' 28,175" E
53° 38' 16,403" N	0° 59' 25,479" E
53° 38' 2,077" N	0° 57' 59,391" E
53° 38' 4,166" N	0° 56' 57,224" E
53° 37' 58,937" N	0° 56' 42,467" E
53° 37' 33,594" N	0° 56' 40,248" E
53° 37' 31,948" N	0° 55' 15,847" E
53° 37' 47,540" N	0° 55' 10,458" E
53° 37' 44,942" N	0° 54' 9,203" E
53° 37' 14,693" N	0° 51' 46,505" E
53° 37' 14,455" N	0° 49' 47,661" E
53° 36' 44,170" N	0° 47' 39,734" E
53° 36' 0,540" N	0° 43' 53,312" E
53° 35' 29,375" N	0° 42' 55,137" E
53° 33' 22,426" N	0° 40' 48,516" E
53° 32' 7,546" N	0° 39' 51,893" E
53° 31' 43,170" N	0° 38' 30,952" E
53° 31' 12,017" N	0° 38' 4,665" E

Latitude (WGS84)	Longitude (WGS84)
53° 30' 18,230" N	0° 32' 55,750" E
53° 29' 22,551" N	0° 26' 30,856" E
53° 29' 12,115" N	0° 24' 45,142" E
53° 28' 29,570" N	0° 20' 21,581" E
53° 28' 37,086" N	0° 19' 22,247" E
53° 29' 50,796" N	0° 16' 18,425" E
53° 30' 54,775" N	0° 14' 10,391" E
53° 31' 2,707" N	0° 13' 24,903" E
53° 31' 31,865" N	0° 12' 8,960" E
53° 31' 8,839" N	0° 8' 14,664" E
53° 30' 56,336" N	0° 7' 6,528" E
53° 30' 48,777" N	0° 7' 1,728" E
53° 30' 39,121" N	0° 6' 17,311" E
53° 30' 39,405" N	0° 5' 52,891" E
53° 31' 5,230" N	0° 4' 40,609" E
53° 31' 48,148" N	0° 5' 14,392" E
53° 32' 0,611" N	0° 5' 54,673" E
53° 31' 55,416" N	0° 6' 23,153" E
53° 32' 11,157" N	0° 8' 27,502" E
53° 32' 31,751" N	0° 12' 37,383" E
53° 32' 19,716" N	0° 13' 26,968" E
53° 32' 8,099" N	0° 13' 44,182" E
53° 29' 28,003" N	0° 20' 8,972" E
53° 31' 7,268" N	0° 31' 29,653" E
53° 31' 33,595" N	0° 34' 20,769" E
53° 32' 0,629" N	0° 36' 36,759" E
53° 32' 9,093" N	0° 37' 40,901" E
53° 32' 4,863" N	0° 38' 20,144" E
53° 32' 20,102" N	0° 39' 23,807" E
53° 33' 35,071" N	0° 40' 20,327" E
53° 35' 40,809" N	0° 42' 26,986" E
53° 36' 18,396" N	0° 43' 39,237" E
53° 36' 44,069" N	0° 45' 23,338" E
53° 37' 7,109" N	0° 47' 34,987" E
53° 37' 33,029" N	0° 49' 10,746" E
53° 37' 33,513" N	0° 51' 28,386" E
53° 38' 2,090" N	0° 53' 44,466" E
53° 38' 9,119" N	0° 55' 9,396" E
53° 38' 26,805" N	0° 55' 12,814" E
53° 38' 28,306" N	0° 56' 36,030" E
53° 38' 20,125" N	0° 56' 41,437" E
53° 38' 24,187" N	0° 57' 1,622" E
53° 38' 21,625" N	0° 57' 55,787" E
53° 38' 37,874" N	0° 59' 18,954" E

Latitude	Longitude
(WGS84)	(WGS84)
53° 40' 39,445" N	1° 5' 39,744" E
53° 41' 15,927" N	1° 6' 49,625" E
53° 41' 48,180" N	1° 9' 45,281" E
53° 43' 0,796" N	1° 14' 34,354" E
53° 43' 3,158" N	1° 15' 27,373" E
53° 44' 5,955" N	1° 20' 8,767" E
53° 45' 51,124" N	1° 23' 36,801" E
53° 47' 35,307" N	1° 26' 46,815" E
53° 47' 58,031" N	1° 27' 46,976" E
53° 49' 40,483" N	1° 30' 32,038" E
53° 49' 47,250" N	1° 30' 53,561" E
53° 49' 47,882" N	1° 26' 56,955" E
53° 49' 52,264" N	1° 26' 39,020" E
53° 50' 2,497" N	1° 26' 28,120" E
54° 0' 31,528" N	1° 25' 47,038" E
54° 0' 42,580" N	1° 25' 52,784" E
54° 0' 49,685" N	1° 26' 7,903" E
54° 0' 37,879" N	1° 38' 38,420" E
53° 59' 56,311" N	2° 3' 47,577" E
53° 59' 47,212" N	2° 4' 13,879" E