



Notice to Mariners – Hornsea Project Two

Notice of Substation Jacket Foundations Installation – As Built Coordinates UPDATE 15/10/20

1. INTRODUCTION

Mariners are advised that Ørsted have completed installation of the Offshore Substation (OSS) jacket and Reactive Compensation Station (RCS) jacket within the Hornsea Project Two Offshore Wind Farm area. The as-built positions and coordinates are as shown in Figure 2. Safety Zones have been introduced to the wind farm structures, details of which can be found in Section 3.1 of this notice.

2. AREA OF OPERATIONS

Mariners are advised that MaxSea and Olex plotter files of the proposed works area can be provided by the Project's Commercial Fisheries Advisors at Brown and May Marine Limited and the Project's onshore fisheries liaison. Contact details are provided in Section 5 of this Notice.

Note that these works were carried out alongside ongoing survey operations using the MHO Grimsby as well as ongoing construction activities across the site for Hornsea Project Two.

Figure 1. Fisheries Clearance Area

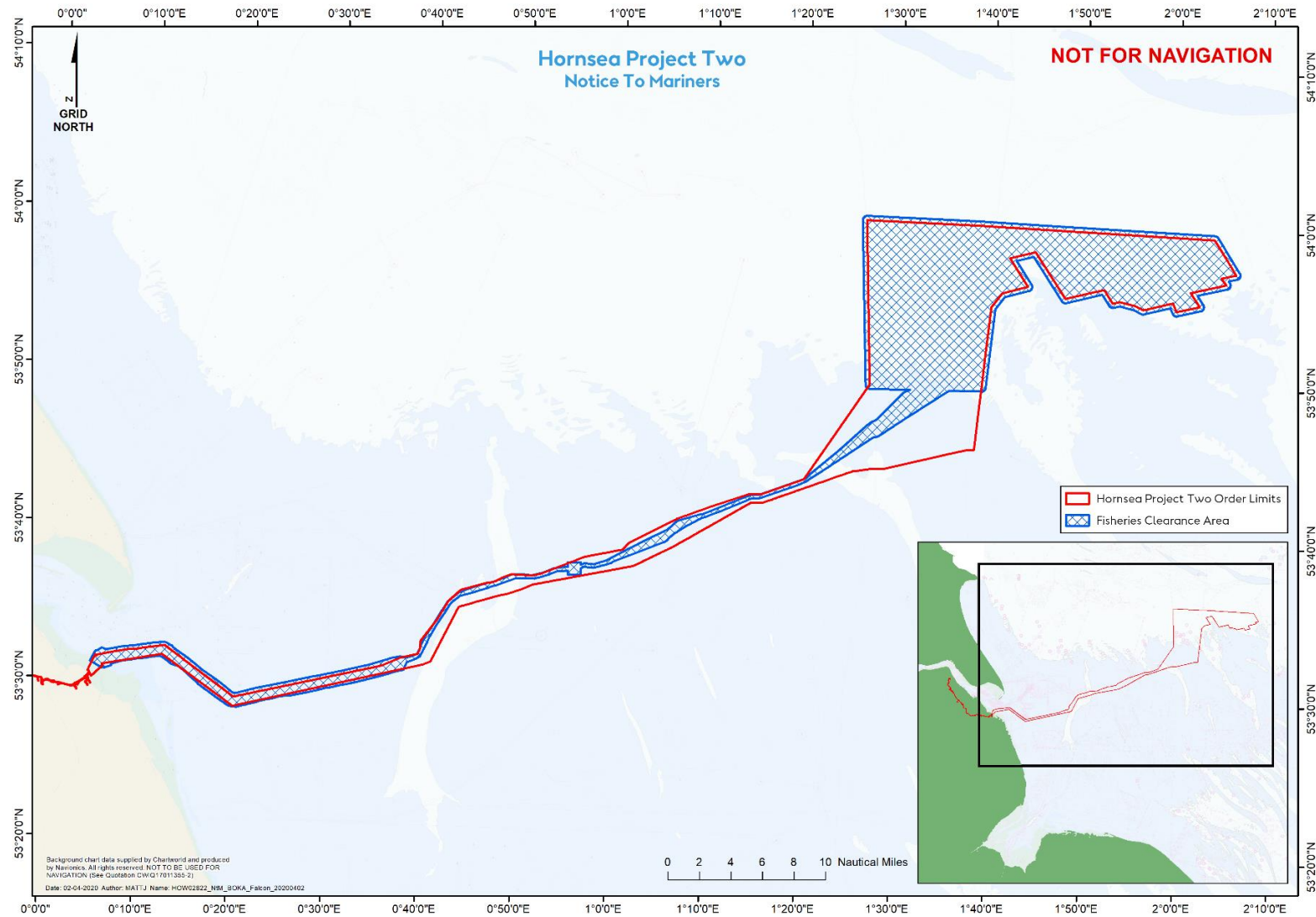
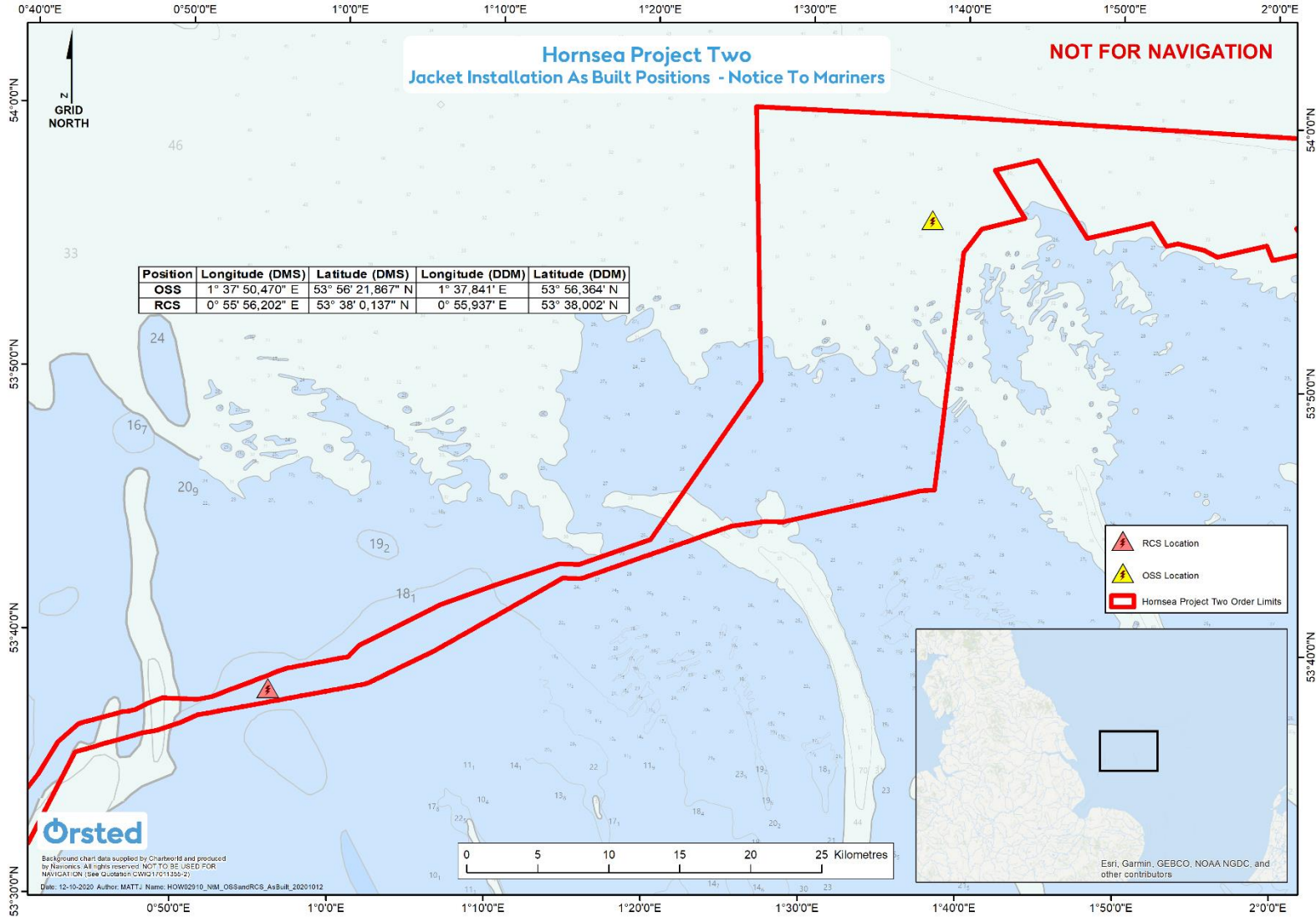


Figure 2. As-Built OSS & RCS jacket installation locations



3. PROPOSED ACTIVITIES

3.1 Offshore Substation and Reactive Compensation Station Installation

Please be advised that Heerema Marine Contractors (HMC) have completed installation of the Offshore Substation (OSS) jacket and the Reactive Compensation Station (RCS) jacket with the Sleipnir Crane Vessel and Barentsz Heavy Transport Vessel. This notice will be updated and reissued prior to the installation of the topsides for both structures, anticipated in Q2 2021.

'Rolling' 500m Safety Zones (SZs) will be in place around the OSS and RCS when a construction vessel *is* present. When a construction vessel *is not* present, 50m SZs are in place around any wind farm structure that is either partially constructed but not yet commissioned.

3.2 Safety

It is requested that anybody having knowledge of any potential objects submerged or moored on the seabed within the survey area that could be damaged or form a hazard to the vessel and its equipment advises the Project's Fishing Industry Liaison of their position and nature. The Project has also requested the clearance of static fishing gear within the boundary shown in Figure 1 with coordinates provided in Section 6 of this Notice.

4. IMMEDIATE CONTACTS

The contents of this notice are based upon our current understanding of Project Two requirements.

Enquiries regarding the contents of this Notice to Mariners or any other matters should be directed to:

Project Manager (Ørsted) (Office hours only)	Garry Blowers	
	Tel: +44 77 6 9147710	E-mail: GARBL@orsted.co.uk
Project Manager (Heerema Marine Contractors) (Office hours only)	John Bouwman	
	Tel: +31 [0]71 5799699	E-mail: jbouwman@hmc-heerema.com

5. FISHERIES LIAISON

Onshore Fisheries Liaison is provided by Nick Garside and Sophie Farenden who can be contacted on:

E-mail: nick.garside@live.co.uk	Mob: +44 (0) 7538 827013
Email: sophie.farenden@brownmay.com	Mob: +44 (0)7525 128344

An Offshore Fisheries Liaison Officer is onboard the Emswind Guard Vessel, contactable on VHF channel 16, if required.

In the event the Offshore or Onshore Fisheries Liaison is not contactable please direct fisheries enquiries related to the works to the Ørsted Company Fisheries Liaison Officer:

Company Fisheries Liaison Officer – Courtney French	Tel: +44 (0)7796 447372	E-mail: CONFR@orsted.co.uk
--	-------------------------	--

6. COORDINATES

Shown in Figure 2 – As-Built installation locations

Position	Longitude (DMS)	Latitude (DMS)	Longitude (DDM)	Latitude (DDM)
OSS	1° 37' 50.470" E	53° 56' 21.867" N	1° 37.841' E	53° 56.364' N
RCS	0° 55' 56.202" E	53° 38' 0.137" N	0° 55.937' E	53° 38.002' N

Shown in Figure 1 – Fisheries Clearance Area

Latitude (WGS84)	Longitude (WGS84)
53° 59' 47,212" N	2° 4' 13,879" E
53° 57' 33,751" N	2° 6' 35,650" E
53° 57' 15,701" N	2° 6' 36,035" E
53° 57' 6,478" N	2° 6' 18,896" E
53° 56' 59,777" N	2° 5' 28,497" E
53° 56' 42,915" N	2° 5' 36,351" E
53° 56' 28,883" N	2° 5' 17,519" E
53° 56' 3,483" N	2° 2' 8,588" E
53° 55' 27,479" N	2° 2' 46,083" E
53° 55' 15,410" N	2° 2' 44,720" E
53° 55' 6,438" N	2° 2' 32,255" E
53° 54' 43,304" N	1° 59' 50,397" E
53° 54' 49,180" N	1° 59' 21,898" E
53° 55' 12,752" N	1° 59' 2,060" E
53° 54' 48,758" N	1° 56' 10,242" E
53° 55' 4,977" N	1° 55' 8,846" E
53° 55' 17,637" N	1° 53' 38,207" E
53° 55' 12,551" N	1° 52' 45,906" E
53° 55' 19,225" N	1° 52' 28,565" E
53° 56' 0,723" N	1° 51' 42,606" E
53° 55' 28,077" N	1° 47' 37,142" E
53° 55' 35,546" N	1° 47' 20,574" E
53° 58' 20,012" N	1° 44' 17,211" E
53° 58' 5,598" N	1° 42' 39,466" E
53° 56' 39,567" N	1° 44' 13,897" E
53° 56' 25,332" N	1° 44' 17,657" E
53° 56' 11,448" N	1° 43' 56,913" E
53° 55' 46,244" N	1° 41' 19,719" E
53° 55' 1,973" N	1° 40' 23,796" E
53° 50' 2,447" N	1° 39' 30,939" E
53° 49' 49,003" N	1° 39' 16,731" E
53° 49' 46,428" N	1° 35' 32,259" E
53° 46' 48,702" N	1° 28' 4,620" E
53° 46' 42,946" N	1° 27' 31,338" E
53° 43' 49,843" N	1° 20' 24,581" E

Latitude (WGS84)	Longitude (WGS84)
53° 42' 44,084" N	1° 15' 38,529" E
53° 42' 41,344" N	1° 14' 42,628" E
53° 41' 21,520" N	1° 9' 20,997" E
53° 40' 22,700" N	1° 6' 37,474" E
53° 39' 47,066" N	1° 5' 28,175" E
53° 38' 16,403" N	0° 59' 25,479" E
53° 38' 2,077" N	0° 57' 59,391" E
53° 38' 4,166" N	0° 56' 57,224" E
53° 37' 58,937" N	0° 56' 42,467" E
53° 37' 33,594" N	0° 56' 40,248" E
53° 37' 31,948" N	0° 55' 15,847" E
53° 37' 47,540" N	0° 55' 10,458" E
53° 37' 44,942" N	0° 54' 9,203" E
53° 37' 14,693" N	0° 51' 46,505" E
53° 37' 14,455" N	0° 49' 47,661" E
53° 36' 44,170" N	0° 47' 39,734" E
53° 36' 0,540" N	0° 43' 53,312" E
53° 35' 29,375" N	0° 42' 55,137" E
53° 33' 22,426" N	0° 40' 48,516" E
53° 32' 7,546" N	0° 39' 51,893" E
53° 31' 43,170" N	0° 38' 30,952" E
53° 31' 12,017" N	0° 38' 4,665" E
53° 30' 18,230" N	0° 32' 55,750" E
53° 29' 22,551" N	0° 26' 30,856" E
53° 29' 12,115" N	0° 24' 45,142" E
53° 28' 29,570" N	0° 20' 21,581" E
53° 28' 37,086" N	0° 19' 22,247" E
53° 29' 50,796" N	0° 16' 18,425" E
53° 30' 54,775" N	0° 14' 10,391" E
53° 31' 2,707" N	0° 13' 24,903" E
53° 31' 31,865" N	0° 12' 8,960" E
53° 31' 8,839" N	0° 8' 14,664" E
53° 30' 56,336" N	0° 7' 6,528" E
53° 30' 48,777" N	0° 7' 1,728" E
53° 30' 39,121" N	0° 6' 17,311" E
53° 30' 39,405" N	0° 5' 52,891" E
53° 31' 5,230" N	0° 4' 40,609" E
53° 31' 48,148" N	0° 5' 14,392" E
53° 32' 0,611" N	0° 5' 54,673" E
53° 31' 55,416" N	0° 6' 23,153" E
53° 32' 11,157" N	0° 8' 27,502" E
53° 32' 31,751" N	0° 12' 37,383" E
53° 32' 19,716" N	0° 13' 26,968" E
53° 32' 8,099" N	0° 13' 44,182" E

Latitude (WGS84)	Longitude (WGS84)
53° 29' 28,003" N	0° 20' 8,972" E
53° 31' 7,268" N	0° 31' 29,653" E
53° 31' 33,595" N	0° 34' 20,769" E
53° 32' 0,629" N	0° 36' 36,759" E
53° 32' 9,093" N	0° 37' 40,901" E
53° 32' 4,863" N	0° 38' 20,144" E
53° 32' 20,102" N	0° 39' 23,807" E
53° 33' 35,071" N	0° 40' 20,327" E
53° 35' 40,809" N	0° 42' 26,986" E
53° 36' 18,396" N	0° 43' 39,237" E
53° 36' 44,069" N	0° 45' 23,338" E
53° 37' 7,109" N	0° 47' 34,987" E
53° 37' 33,029" N	0° 49' 10,746" E
53° 37' 33,513" N	0° 51' 28,386" E
53° 38' 2,090" N	0° 53' 44,466" E
53° 38' 9,119" N	0° 55' 9,396" E
53° 38' 26,805" N	0° 55' 12,814" E
53° 38' 28,306" N	0° 56' 36,030" E
53° 38' 20,125" N	0° 56' 41,437" E
53° 38' 24,187" N	0° 57' 1,622" E
53° 38' 21,625" N	0° 57' 55,787" E
53° 38' 37,874" N	0° 59' 18,954" E
53° 40' 39,445" N	1° 5' 39,744" E
53° 41' 15,927" N	1° 6' 49,625" E
53° 41' 48,180" N	1° 9' 45,281" E
53° 43' 0,796" N	1° 14' 34,354" E
53° 43' 3,158" N	1° 15' 27,373" E
53° 44' 5,955" N	1° 20' 8,767" E
53° 45' 51,124" N	1° 23' 36,801" E
53° 47' 35,307" N	1° 26' 46,815" E
53° 47' 58,031" N	1° 27' 46,976" E
53° 49' 40,483" N	1° 30' 32,038" E
53° 49' 47,250" N	1° 30' 53,561" E
53° 49' 47,882" N	1° 26' 56,955" E
53° 49' 52,264" N	1° 26' 39,020" E
53° 50' 2,497" N	1° 26' 28,120" E
54° 0' 31,528" N	1° 25' 47,038" E
54° 0' 42,580" N	1° 25' 52,784" E
54° 0' 49,685" N	1° 26' 7,903" E
54° 0' 37,879" N	1° 38' 38,420" E
53° 59' 56,311" N	2° 3' 47,577" E
53° 59' 47,212" N	2° 4' 13,879" E

