



# Notice to Mariners – Hornsea Project Two

## Notice of Foundation Installation Activities – Safety Zone Update 01/10/2020

### 1. INTRODUCTION

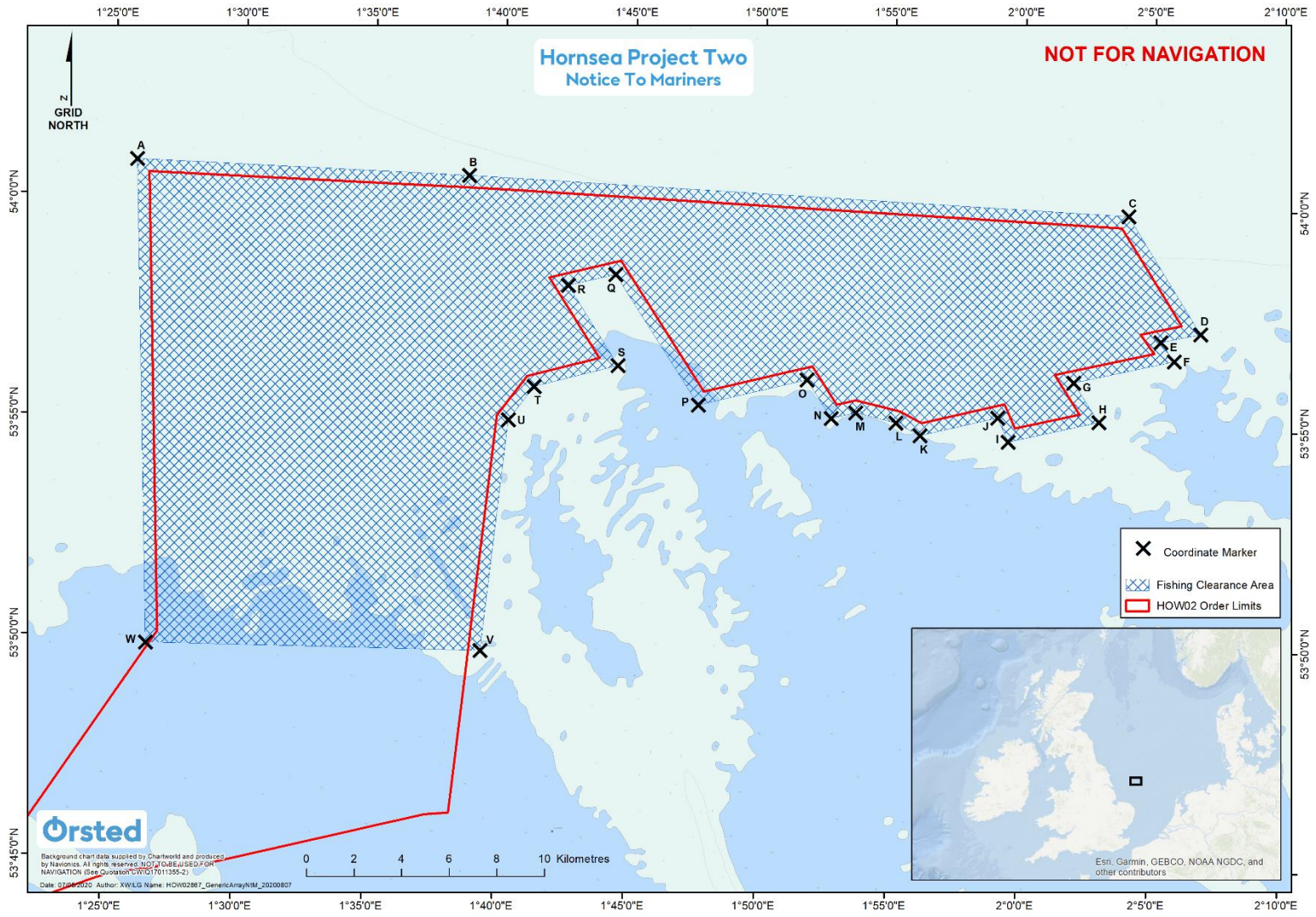
Mariners are advised that Ørsted are continuing scour protection installation and will be commencing monopile foundation installation within the Hornsea Project Two Offshore Wind Farm array area, shown in Figure 1, on or around the 4<sup>th</sup> October 2020. Safety Zones will be implemented around the wind farm structures during construction, details of which can be found in Section 3.1 of this notice.

### 2. AREA OF OPERATIONS

Activities are being carried out within the Hornsea Project Two Offshore Wind Farm array area as shown in Figure 1. Mariners are advised that MaxSea and Olex plotter files of the proposed works area can be provided by the Project's Commercial Fisheries Advisors at Brown and May Marine Limited and the Project's onshore fisheries liaison. Contact details are provided in Section 5 of this Notice.

Note that these works will be carried out alongside ongoing survey operations using the MHO Grimsby as well as ongoing construction activities for Hornsea Project Two.

Figure 1. Proposed Construction Area



### 3. PROPOSED ACTIVITIES

#### 3.1 Foundation Installation

Please be advised that DEME Group will be commencing monopile foundation installation using the Innovation on or around 4<sup>th</sup> October 2020. These works will be carried out alongside ongoing scour protection installation. Foundation installation works will be continual and intermittent throughout this period through to Q4 2021. Additionally, fixed noise monitoring equipment will be positioned within the DCO at a select number of the first foundations to be installed to carry out noise monitoring of the works. The works will be undertaken by a number of vessels at different times according to the Project schedule. Details of the vessels are provided in Section 6. When the works are complete, this Notice will be updated and re-issued.

Rolling 500m Safety Zones (SZs) will be in place around the OSS and RCS when a construction vessel *is* present. When a construction vessel *is not* present, 50m SZs are in place around any wind farm structure that is either partially constructed but not yet commissioned.

Note that the vessels will have limited manoeuvrability and it is requested that all vessels operating near the vessels maintain a safe distance (at least 500m) and pass all vessels at minimum speed.

#### 3.2 Safety

It is requested that anybody having knowledge of any potential objects submerged or moored on the seabed within the survey area that could be damaged or form a hazard to the vessel and its equipment advises the Project's Fishing Industry Liaison of their position and nature. The Project has also requested the clearance of static fishing gear within the boundary shown in Figure 1 and coordinates provided in Section 7 of this Notice. When surveys commence a listening watch will be maintained on VHF Channel 12 and 16 when within the appropriate port authority area and will actively transmit an AIS signal.

The subsurface hydrophones will be positioned by the MSS Supreme and marked with a yellow surface marker buoy and light Fl (5) Y 20s light character.

### 4. IMMEDIATE CONTACTS

The contents of this notice are based upon our current understanding of Project Two requirements. A further notice will be issued once activities are completed.

Enquiries regarding the contents of this Notice to Mariners or any other matters should be directed to:

<b>Project Manager (Ørsted)</b> (Office hours only)	Thomas Rosier	
	Tel: +44 7825 905 943	E-mail: <a href="mailto:thros@orsted.co.uk">thros@orsted.co.uk</a>
<b>Project Manager (DEME Group)</b> (Office hours only)	Carton Glenn	
	Tel: +32 494 800 845	E-mail: <a href="mailto:Carton.Glenn@deme-group.com">Carton.Glenn@deme-group.com</a>

### 5. FISHERIES LIAISON

Onshore Fisheries Liaison is provided by Nick Garside and Sophie Farenden who can be contacted on:

E-mail: <a href="mailto:nick.garside@live.co.uk">nick.garside@live.co.uk</a>	Mob: +44 (0) 7538 827013
Email: <a href="mailto:sophie.farenden@brownmay.com">sophie.farenden@brownmay.com</a>	Mob: +44 (0)7525 128344


An Offshore Fisheries Liaison Officer is onboard the Emswind Guard Vessel, contactable on VHF channel 16, if required.


In the event the Offshore or Onshore Fisheries Liaison is not contactable please direct fisheries enquiries related to the works to the Ørsted Company Fisheries Liaison Officer:

Company Fisheries Liaison Officer – Courtney French	Tel: +44 (0)7796 447372	E-mail: <a href="mailto:CONFR@orsted.co.uk">CONFR@orsted.co.uk</a>
--	-------------------------	--

## 6. VESSELS

Operations will be conducted by the vessels as provided below. Additional vessels may mobilise to site as required. Contact can be made directly with the vessels, where necessary, using the contact details listed below. This Notice will be updated with further contact details once confirmed. Client and contractor contact details are provided in Section 4 and 5 of this NtM.

Vessel Details – Innovation	
 <p>© RENE HENRI ROSSEEL MarineTraffic.com</p>	
<b>Vessel Type / Function</b>	Foundation Installation Jackup Vessel
<b>Vessel telephone</b>	V-sat: +49 421 944 0241 760 (Bridge) +49 42 194 4024 1760 (Captain) Mobile: +49 16 09 39 63 436 (Bridge)
<b>Vessel email</b>	<a href="mailto:Innovation@ships.deme-group.com">Innovation@ships.deme-group.com</a> <a href="mailto:Captain.Innovation@ships.deme-group.com">Captain.Innovation@ships.deme-group.com</a>
<b>Call Sign</b>	DHUR2
<b>MMSI</b>	218781000

Vessel Details – Flintstone	
	
<b>Vessel Type / Function</b>	Rock / cable protection installation
<b>Vessel telephone</b>	V-sat: +49 421 517 219 19 63 Mobile: +31 65 1957354
<b>Vessel email</b>	<a href="mailto:captain.flintstone@ships.deme-group.com">captain.flintstone@ships.deme-group.com</a>



<b>Call Sign</b>	PBZD
<b>MMSI</b>	245861000

Vessel Details – Rollingstone
-------------------------------



<b>Vessel Type / Function</b>	Rock / cable protection installation
<b>Vessel telephone</b>	V-Sat: +49 4215172191935 Mob +31 6 53 22 57 33
<b>Vessel email</b>	<a href="mailto:captain.rollingstone@deme-group.com">captain.rollingstone@deme-group.com</a> <a href="mailto:bridge.rollingstone@ships.deme-group.com">bridge.rollingstone@ships.deme-group.com</a>
<b>Call Sign</b>	PHYR
<b>MMSI</b>	245746000

Vessel Details – MMS Supreme
------------------------------



<b>Vessel Type / Function</b>	Noise Monitoring Vessel
<b>Vessel telephone</b>	V-Sat: 00881632647524 Mob: 07741576452
<b>Vessel email</b>	<a href="mailto:mmssupreme@mms-offshore.co.uk">mmssupreme@mms-offshore.co.uk</a>
<b>Call Sign</b>	2HGZ5
<b>MMSI</b>	235103595

## 7. COORDINATES

Coordinate Marker	Longitude (WGS84)	Latitude (WGS84)
A	1° 25' 51.462" E	54° 0' 48.311" N
B	1° 38' 38.382" E	54° 0' 34.663" N
C	2° 4' 1.621" E	53° 59' 52.681" N
D	2° 6' 50.713" E	53° 57' 13.578" N
E	2° 5' 19.157" E	53° 57' 1.913" N
F	2° 5' 50.608" E	53° 56' 36.173" N
G	2° 1' 59.723" E	53° 56' 5.632" N
H	2° 2' 58.547" E	53° 55' 12.083" N
I	1° 59' 29.954" E	53° 54' 43.789" N
J	1° 59' 5.229" E	53° 55' 16.550" N
K	1° 56' 7.241" E	53° 54' 51.044" N
L	1° 55' 10.769" E	53° 55' 8.053" N
M	1° 53' 38.216" E	53° 55' 20.976" N
N	1° 52' 41.920" E	53° 55' 12.914" N
O	1° 51' 45.091" E	53° 56' 4.428" N
P	1° 47' 35.573" E	53° 55' 28.005" N
Q	1° 44' 19.681" E	53° 58' 23.722" N
R	1° 42' 30.720" E	53° 58' 7.653" N
S	1° 44' 29.061" E	53° 56' 19.862" N
T	1° 41' 16.484" E	53° 55' 49.096" N
U	1° 40' 18.524" E	53° 55' 3.210" N
V	1° 39' 23.089" E	53° 49' 48.866" N
W	1° 26' 33.640" E	53° 49' 51.105" N