



Notice to Mariners – Hornsea Project Two

Notice of Export Cable Installation Activities – Cable Wet Storage – 27/09/2020

1. INTRODUCTION

Mariners are advised that Ørsted are continuing export cable installation works as part of the construction of the Hornsea Project Two Offshore Wind Farm. A section of the cable will be temporarily wet stored at a proposed cable joint location, shown in Figure 1 with coordinates provided in Section 7. A previous NtM was issued for wet storing another section of cable which is shown in Figure 2. Additional guard vessels will arrive on site along the export cable route as required.

2. AREA OF OPERATIONS

Activities are being carried out on the Hornsea Project Two Offshore Wind Farm export cable route as shown in Figure 3. Mariners are advised that MaxSea and Olex plotter files of the proposed works area can be provided by the Project's Commercial Fisheries Advisors at Brown and May Marine Limited and the Project's onshore fisheries liaison. Contact details are provided in Section 5 of this Notice.

Note that these works will be carried out alongside ongoing survey operations using the Titan Endeavour, MHO Grimsby and Ivero which are currently on site, as well as ongoing construction activities for Hornsea Project Two.

Figure 1. Proposed wet stored cable location

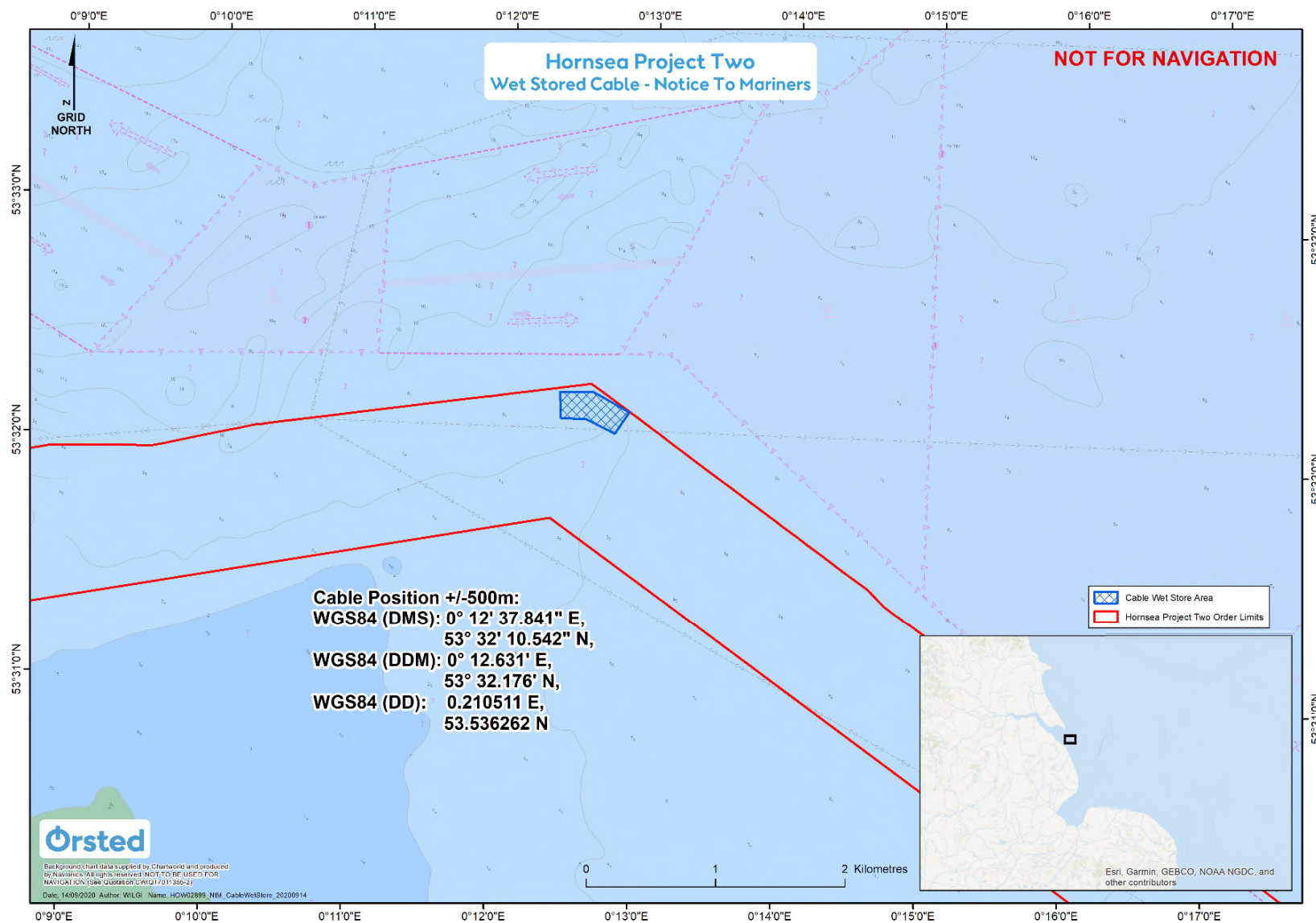


Figure 2. Proposed wet stored cable location

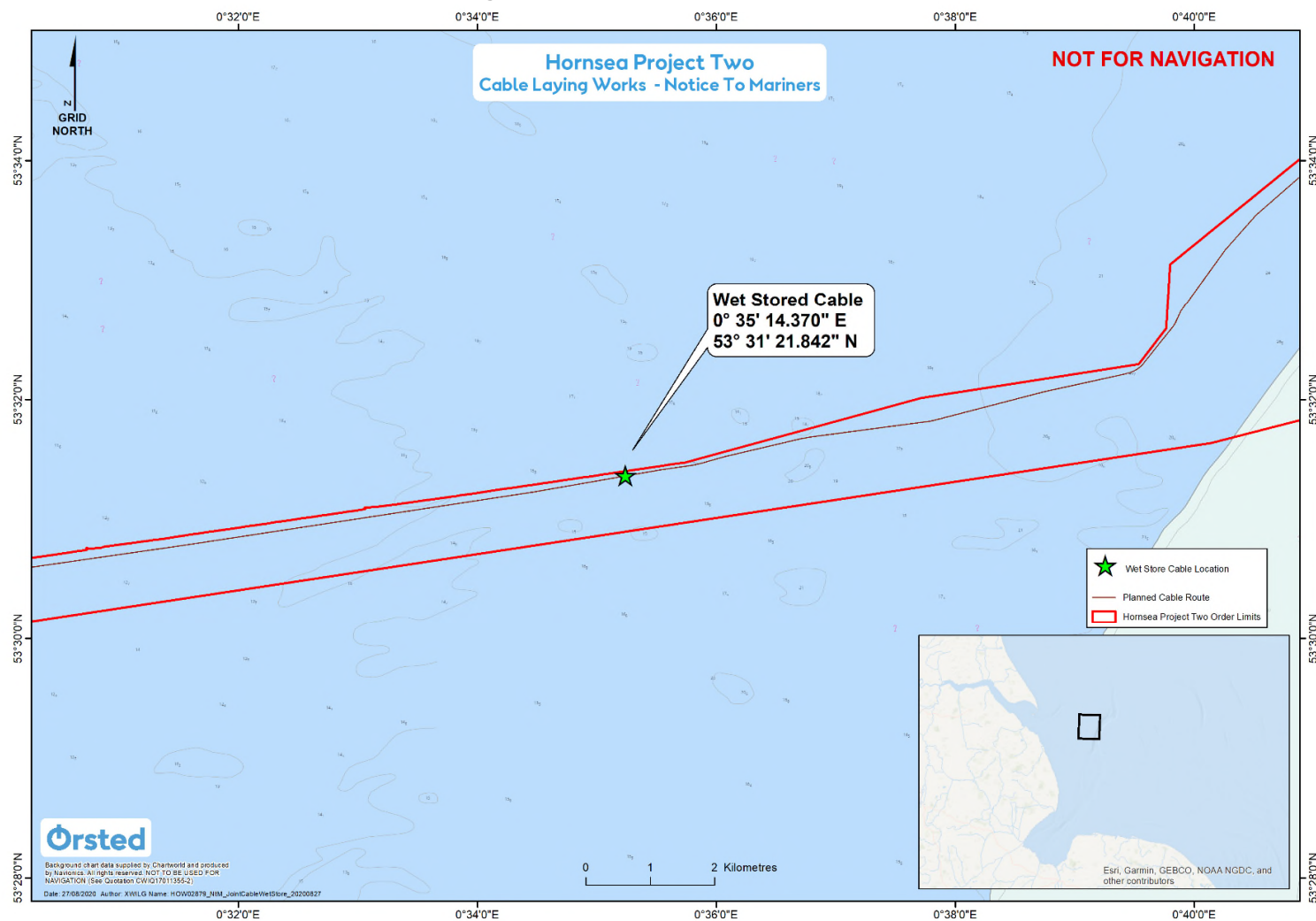
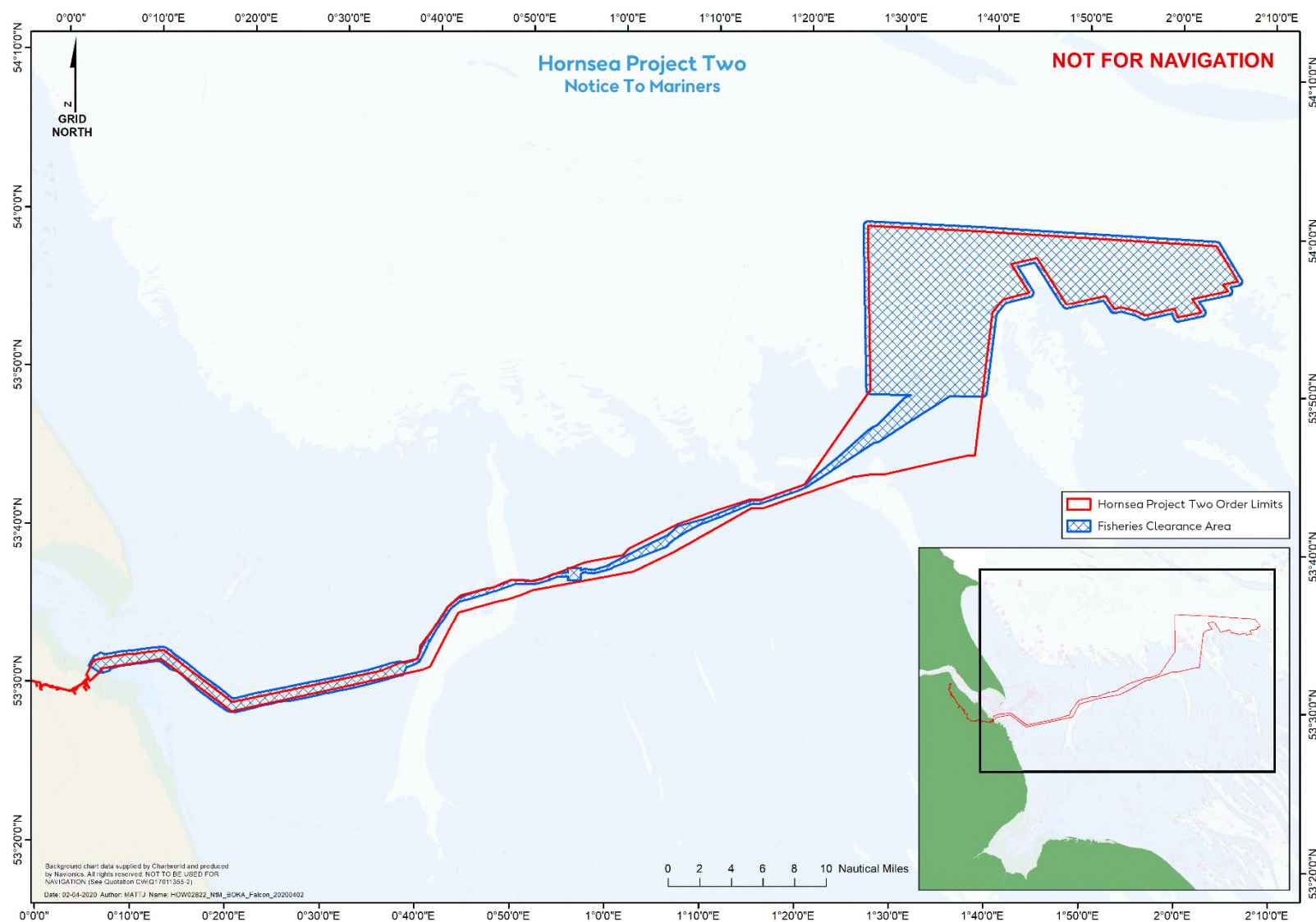


Figure 3. Proposed Construction Area



3. PROPOSED ACTIVITIES

3.1 Export Cable Installation

Please be advised that Boskalis will be temporarily wet storing a cable at the location provided in Figure 1 from 15th September 2020. A guard vessel will be present at all times, subject to safe weather conditions, whilst the cable is wet-stored but it is advised that mariners maintain a safe clearance. As detailed in a previous version of this NtM, another section of cable will be temporarily wet stored at another proposed cable joint location, shown in Figure 2.

This is in addition to ongoing seabed preparation and cable installation and burial activities that will be continual and intermittent through to Q4 2021. The works will be undertaken by a number of vessels at different times according to the Project schedule. Further guard vessels will arrive on site to support works, weather permitting. Details of the vessels are provided in Section 6. When the works are complete, this Notice will be updated and re-issued.

Note that the vessels will have limited manoeuvrability, some vessels will be operating on anchors, and it is requested that all vessels operating near the vessels maintain a safe distance (at least 500m) and pass all vessels at minimum speed.

3.2 Safety

It is requested that anybody having knowledge of any potential objects submerged or moored on the seabed within the survey area that could be damaged or form a hazard to the vessel and its equipment advises the Project's Fishing Industry Liaison of their position and nature. The Project has also requested the clearance of static fishing gear within the boundary shown in Figure 3 and described in Section 7 of this Notice. When surveys commence a listening watch will be maintained on VHF Channel 12 and 16 when within the appropriate port authority area and will actively transmit an AIS signal.

4. IMMEDIATE CONTACTS

The contents of this notice are based upon our current understanding of Project Two requirements. A further notice will be issued once activities are completed.

Enquiries regarding the contents of this Notice to Mariners or any other matters should be directed to:

Project Manager (Ørsted) (Office hours only)	Richard Irving	
	Tel: +44 78 5 4276523	E-mail: ricir@orsted.co.uk
Project Manager (Boskalis) (Office hours only)	Steve Marshall	
	Tel: +44 7970 750 385	E-mail: steve.marshall@boskalis.com

5. FISHERIES LIAISON

Onshore Fisheries Liaison is provided by Nick Garside and Sophie Farenden who can be contacted on:

E-mail: nick.garside@live.co.uk	Mob: +44 (0) 7538 827013
Email: sophie.farenden@brownmay.com	Mob: +44 (0)7525 128344
Email: cdemmerson@live.com	Mob: +44 (0)7581 491559


An Offshore Fisheries Liaison Officer is present on the Rollingstone contactable on VHF channel 16, if required. An onshore FLO (Chris Emmerson) is also available covering the ongoing works, contactable on the above details.

In the event the Offshore or Onshore Fisheries Liaison is not contactable please direct fisheries enquiries related to the works to the Ørsted Company Fisheries Liaison Officer:

Company Fisheries Liaison Officer – Courtney French	Tel: +44 (0)7796 447372	E-mail: CONFR@orsted.co.uk
--	-------------------------	--

6. VESSELS

Operations will be conducted by a number of vessels as provided below. Additional vessels may mobilise to site as required. Contact can be made directly with the vessels, where necessary, using the contact details listed below. This Notice will be updated with further contact details once confirmed. Client and contractor contact details are provided in Section 4 and 5 of this NtM.

Vessel Details – Flintstone	
	
Vessel Type / Function	Rock / cable protection installation
Vessel telephone	V-sat: +49 421 517 219 19 64 Mobile: +31 65 1957354
Vessel email	captain.flintstone@DEME-GROUP.com
Call Sign	PBZD
MMSI	245861000

Vessel Details – Ndurance



Vessel Type / Function	Cable installation and burial
Vessel telephone	+31 65 109 0370 +31 10 713 0548 (V-sat)
Vessel email	ndurance-captain@boskalis.com
Call Sign	5BVH3
MMSI	209851000

Vessel Details – NKT Victoria



Vessel Type / Function	Farshore cable installation
Vessel telephone	+47 2240 8110 (Bridge) +47 2240 8120 (Captain)
Vessel email	bridge.victoria@remoy.management.no captain.victoria@remoy.management.no
Call Sign	LAWV7
MMSI	257016000

Vessel Contact Details – Boka Falcon

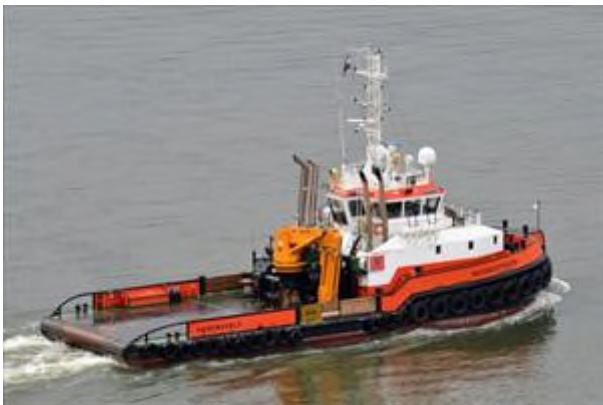



Vessel Type / Function	Cable trenching and burial
Vessel telephone	+31 788 080 929
Vessel email	bokafalcon-bridge@boskalis.com
Call Sign	ORTD
MMSI	205787000

Vessel Contact Details – Coastal Challenger



Vessel / Type / Function	Anchor handling tug / pre-lay grapnel run, cable remedial work
Vessel telephone	Mob + 31 13 6 05 784 V-Sat +31 85 00 90 585
Vessel email	challenger@coastalworkboats.com
Call Sign	PBOC
MMSI	244913000

Vessel Contact Details – Noordstroom	
	
Vessel / Type / Function	Anchor handling tug
Vessel telephone	+31 10 3403079 +31 10 6690405 +31 653 894479
Vessel email	noordstroom@wijngaarden.com
Call Sign	PIWC
MMSI	244006000

Vessel Contact Details – Viking Energy	
	
Vessel / Type / Function	Anchor handling tug
Vessel telephone	+44 7885 990 682
Vessel email	vikingenergy@stewart-marine.co.uk ; operations@landfall.nl
Call Sign	MEPW5
MMSI	232020323

Vessel Details – Lingestroom



Vessel Type / Function	AHT
Vessel telephone	+31 (0) 184 78 8128 +31 (0) 612 44 1220
Vessel email	Lingestroom@wijngaarden.com
Call Sign	PICW
MMSI	244016000

Vessel Contact Details – Maagd



Vessel / Type / Function	Landfall transportation barge
Vessel telephone	n/a
Vessel email	n/a
Call Sign	n/a
MMSI	n/a

Vessel Contact Details – Spirit



Vessel / Type / Function	Cable installation and burial
Vessel telephone	TBC
Vessel email	TBC
Call Sign	5BWK4
MMSI	212471000

Vessel Details – Titan Endeavour



Vessel Type / Function	Nearshore Survey
Vessel telephone	+44 (0)7867 552553
Vessel email	Titan.Endeavour@titansurveys.com
Call Sign	2ELT9
MMSI	235086211

Vessel Details – Ivero



Vessel Type / Function	Farshore survey
Vessel telephone	Mob: +44 (0)7917 477672 Fleet: +870 773 991 015
Vessel email	master@ivero.gardline.co.uk
Call Sign	MCJ03
MMSI	232013165

Vessel Details – Dutch Power



Vessel Type / Function	Anchor Handling Tug (NDurance CLV)
Vessel telephone	Mobile: +31 (0)6-54 79 06 86 Mobile International: +372 81 69 60 41 Sat Tel (V-Sat) +31 (0)31-10 669 05 31
Vessel email	Tug.dutchpower@gmail.com
Call Sign	PBTZ
MMSI	246607000

Vessel Details – MCS Sirocco





Vessel Type / Function	CTV
Vessel telephone	+44 7920 569689
Vessel email	mcssirocco@maritimecraft.co.uk
Call Sign	2FFP4
MMSI	235090843

Vessel Details – GV Adorne



Vessel Type / Function	Guard Vessel
Vessel telephone	Sat phone: (00) 44 1947 750717
Vessel email	gvadorne@gmail.com
Call Sign	MFQ18
MMSI	232023203

Vessel Details – Isla B	
	
Vessel Type / Function	Guard Vessel
Vessel telephone	Sat Phone: +44 (0) 1795 505936 Mobile: +44 (0) 07415 940054
Vessel email	islabridge@gmail.com
Call Sign	MNVM2
MMSI	232007860

Vessel Details – Karelle	
	
Vessel Type / Function	Guard Vessel
Vessel telephone	+447770823004 +447786512045
Vessel email	KMSKarelle@gmail.com
Call Sign	MWXN5
MMSI	234325000

7. COORDINATES

Wet-stored cables coordinates

Wet stored cable	Latitude (DDM) (WGS84)	Longitude (DDM) (WGS84)	Latitude (DD) (WGS84)	Longitude (DD) (WGS84)
Figure 1	53° 32.176' N	0° 12.631' E	53.536262 N	0.210511 E
Figure 2	53° 31.364' N	0° 35.240' E	53.522734 N	0.587325 E

Shown in Figure 3 – Proposed construction area

Latitude (DMS) (WGS84)	Longitude (DMS) (WGS84)
53° 59' 47,212" N	2° 4' 13,879" E
53° 57' 33,751" N	2° 6' 35,650" E
53° 57' 15,701" N	2° 6' 36,035" E
53° 57' 6,478" N	2° 6' 18,896" E
53° 56' 59,777" N	2° 5' 28,497" E
53° 56' 42,915" N	2° 5' 36,351" E
53° 56' 28,883" N	2° 5' 17,519" E
53° 56' 3,483" N	2° 2' 8,588" E
53° 55' 27,479" N	2° 2' 46,083" E
53° 55' 15,410" N	2° 2' 44,720" E
53° 55' 6,438" N	2° 2' 32,255" E
53° 54' 43,304" N	1° 59' 50,397" E
53° 54' 49,180" N	1° 59' 21,898" E
53° 55' 12,752" N	1° 59' 2,060" E
53° 54' 48,758" N	1° 56' 10,242" E
53° 55' 4,977" N	1° 55' 8,846" E
53° 55' 17,637" N	1° 53' 38,207" E
53° 55' 12,551" N	1° 52' 45,906" E
53° 55' 19,225" N	1° 52' 28,565" E
53° 56' 0,723" N	1° 51' 42,606" E
53° 55' 28,077" N	1° 47' 37,142" E
53° 55' 35,546" N	1° 47' 20,574" E
53° 58' 20,012" N	1° 44' 17,211" E
53° 58' 5,598" N	1° 42' 39,466" E
53° 56' 39,567" N	1° 44' 13,897" E
53° 56' 25,332" N	1° 44' 17,657" E
53° 56' 11,448" N	1° 43' 56,913" E
53° 55' 46,244" N	1° 41' 19,719" E
53° 55' 1,973" N	1° 40' 23,796" E
53° 50' 2,447" N	1° 39' 30,939" E
53° 49' 49,003" N	1° 39' 16,731" E
53° 49' 46,428" N	1° 35' 32,259" E

Latitude (DMS) (WGS84)	Longitude (DMS) (WGS84)
53° 46' 48,702" N	1° 28' 4,620" E
53° 46' 42,946" N	1° 27' 31,338" E
53° 43' 49,843" N	1° 20' 24,581" E
53° 42' 44,084" N	1° 15' 38,529" E
53° 42' 41,344" N	1° 14' 42,628" E
53° 41' 21,520" N	1° 9' 20,997" E
53° 40' 22,700" N	1° 6' 37,474" E
53° 39' 47,066" N	1° 5' 28,175" E
53° 38' 16,403" N	0° 59' 25,479" E
53° 38' 2,077" N	0° 57' 59,391" E
53° 38' 4,166" N	0° 56' 57,224" E
53° 37' 58,937" N	0° 56' 42,467" E
53° 37' 33,594" N	0° 56' 40,248" E
53° 37' 31,948" N	0° 55' 15,847" E
53° 37' 47,540" N	0° 55' 10,458" E
53° 37' 44,942" N	0° 54' 9,203" E
53° 37' 14,693" N	0° 51' 46,505" E
53° 37' 14,455" N	0° 49' 47,661" E
53° 36' 44,170" N	0° 47' 39,734" E
53° 36' 0,540" N	0° 43' 53,312" E
53° 35' 29,375" N	0° 42' 55,137" E
53° 33' 22,426" N	0° 40' 48,516" E
53° 32' 7,546" N	0° 39' 51,893" E
53° 31' 43,170" N	0° 38' 30,952" E
53° 31' 12,017" N	0° 38' 4,665" E
53° 30' 18,230" N	0° 32' 55,750" E
53° 29' 22,551" N	0° 26' 30,856" E
53° 29' 12,115" N	0° 24' 45,142" E
53° 28' 29,570" N	0° 20' 21,581" E
53° 28' 37,086" N	0° 19' 22,247" E
53° 29' 50,796" N	0° 16' 18,425" E
53° 30' 54,775" N	0° 14' 10,391" E
53° 31' 2,707" N	0° 13' 24,903" E
53° 31' 31,865" N	0° 12' 8,960" E
53° 31' 8,839" N	0° 8' 14,664" E
53° 30' 56,336" N	0° 7' 6,528" E
53° 30' 48,777" N	0° 7' 1,728" E
53° 30' 39,121" N	0° 6' 17,311" E
53° 30' 39,405" N	0° 5' 52,891" E
53° 31' 5,230" N	0° 4' 40,609" E
53° 31' 48,148" N	0° 5' 14,392" E
53° 32' 0,611" N	0° 5' 54,673" E
53° 31' 55,416" N	0° 6' 23,153" E
53° 32' 11,157" N	0° 8' 27,502" E
53° 32' 31,751" N	0° 12' 37,383" E

Latitude (DMS) (WGS84)	Longitude (DMS) (WGS84)
53° 32' 19,716" N	0° 13' 26,968" E
53° 32' 8,099" N	0° 13' 44,182" E
53° 29' 28,003" N	0° 20' 8,972" E
53° 31' 7,268" N	0° 31' 29,653" E
53° 31' 33,595" N	0° 34' 20,769" E
53° 32' 0,629" N	0° 36' 36,759" E
53° 32' 9,093" N	0° 37' 40,901" E
53° 32' 4,863" N	0° 38' 20,144" E
53° 32' 20,102" N	0° 39' 23,807" E
53° 33' 35,071" N	0° 40' 20,327" E
53° 35' 40,809" N	0° 42' 26,986" E
53° 36' 18,396" N	0° 43' 39,237" E
53° 36' 44,069" N	0° 45' 23,338" E
53° 37' 7,109" N	0° 47' 34,987" E
53° 37' 33,029" N	0° 49' 10,746" E
53° 37' 33,513" N	0° 51' 28,386" E
53° 38' 2,090" N	0° 53' 44,466" E
53° 38' 9,119" N	0° 55' 9,396" E
53° 38' 26,805" N	0° 55' 12,814" E
53° 38' 28,306" N	0° 56' 36,030" E
53° 38' 20,125" N	0° 56' 41,437" E
53° 38' 24,187" N	0° 57' 1,622" E
53° 38' 21,625" N	0° 57' 55,787" E
53° 38' 37,874" N	0° 59' 18,954" E
53° 40' 39,445" N	1° 5' 39,744" E
53° 41' 15,927" N	1° 6' 49,625" E
53° 41' 48,180" N	1° 9' 45,281" E
53° 43' 0,796" N	1° 14' 34,354" E
53° 43' 3,158" N	1° 15' 27,373" E
53° 44' 5,955" N	1° 20' 8,767" E
53° 45' 51,124" N	1° 23' 36,801" E
53° 47' 35,307" N	1° 26' 46,815" E
53° 47' 58,031" N	1° 27' 46,976" E
53° 49' 40,483" N	1° 30' 32,038" E
53° 49' 47,250" N	1° 30' 53,561" E
53° 49' 47,882" N	1° 26' 56,955" E
53° 49' 52,264" N	1° 26' 39,020" E
53° 50' 2,497" N	1° 26' 28,120" E
54° 0' 31,528" N	1° 25' 47,038" E
54° 0' 42,580" N	1° 25' 52,784" E
54° 0' 49,685" N	1° 26' 7,903" E
54° 0' 37,879" N	1° 38' 38,420" E
53° 59' 56,311" N	2° 3' 47,577" E
53° 59' 47,212" N	2° 4' 13,879" E