



# Notice to Mariners – Hornsea Project Two

## Notice of Export Cable Installation Activities – Vessel Details Update – 29/10/2020

### 1. INTRODUCTION

Mariners are advised that the HBC Achiever will be undertaking debris removal from within the Hornsea Project Two Offshore Wind Farm Export Cable Route on or around 30<sup>th</sup> November 2020, with relevant vessel details added in Section 6.

Mariners are advised that Ørsted are continuing export cable installation works as part of the construction of the Hornsea Project Two Offshore Wind Farm, as shown in Figure 3. The sections of the cable temporarily being wet stored at proposed cable joint locations are shown in Figure 1 and Figure 2 with coordinates provided in Section 7.

### 2. AREA OF OPERATIONS

Activities are being carried out on the Hornsea Project Two Offshore Wind Farm export cable route as shown in Figure 3. Mariners are advised that MaxSea and Olex plotter files of the proposed works area can be provided by the Project's Commercial Fisheries Advisors at Brown and May Marine Limited and the Project's onshore fisheries liaison. Contact details are provided in Section 5 of this Notice.

Note that these works will be carried out alongside ongoing survey and construction activities for Hornsea Project Two.

Figure 1. Proposed wet stored cable location

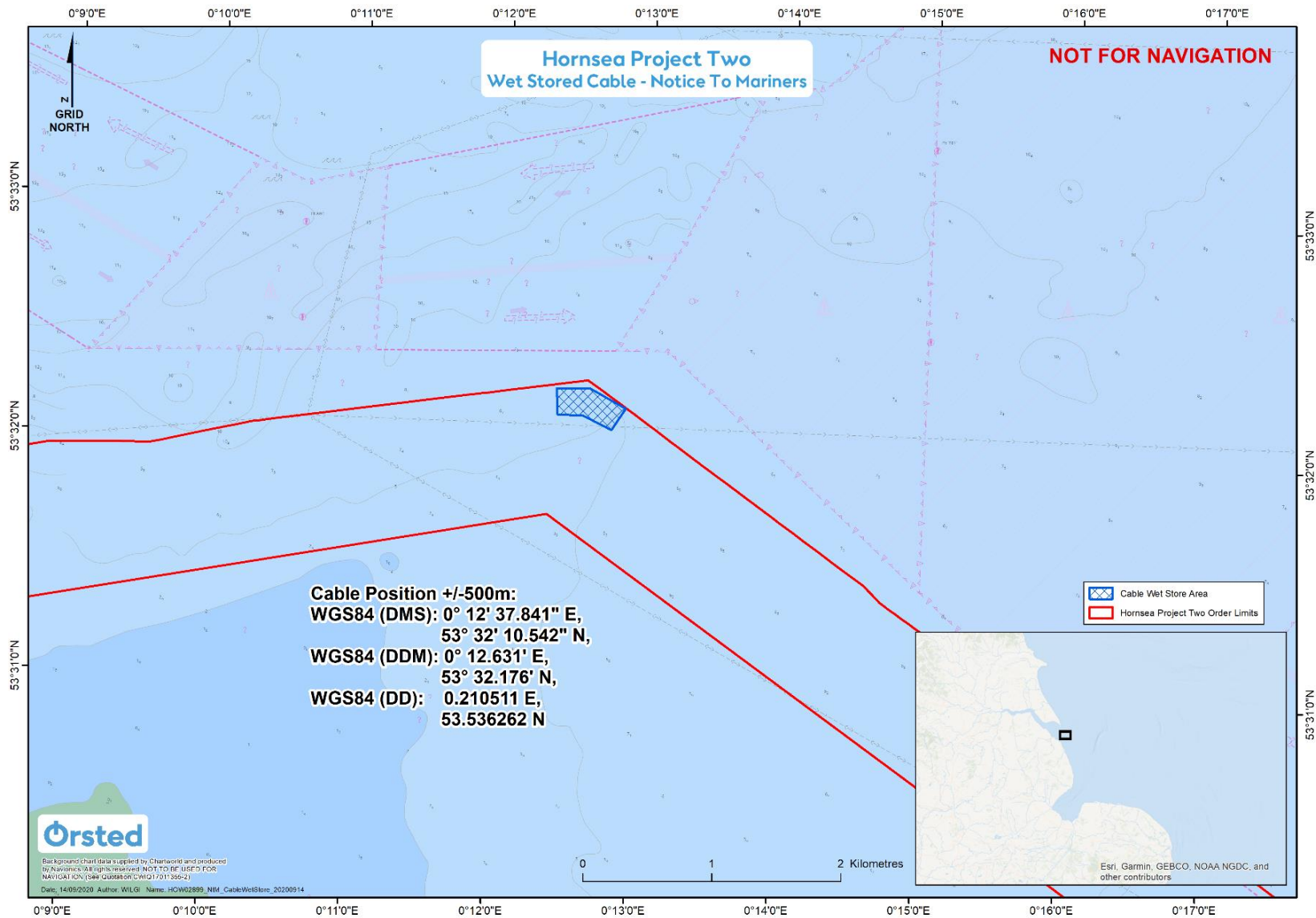


Figure 2. Proposed wet stored cable location

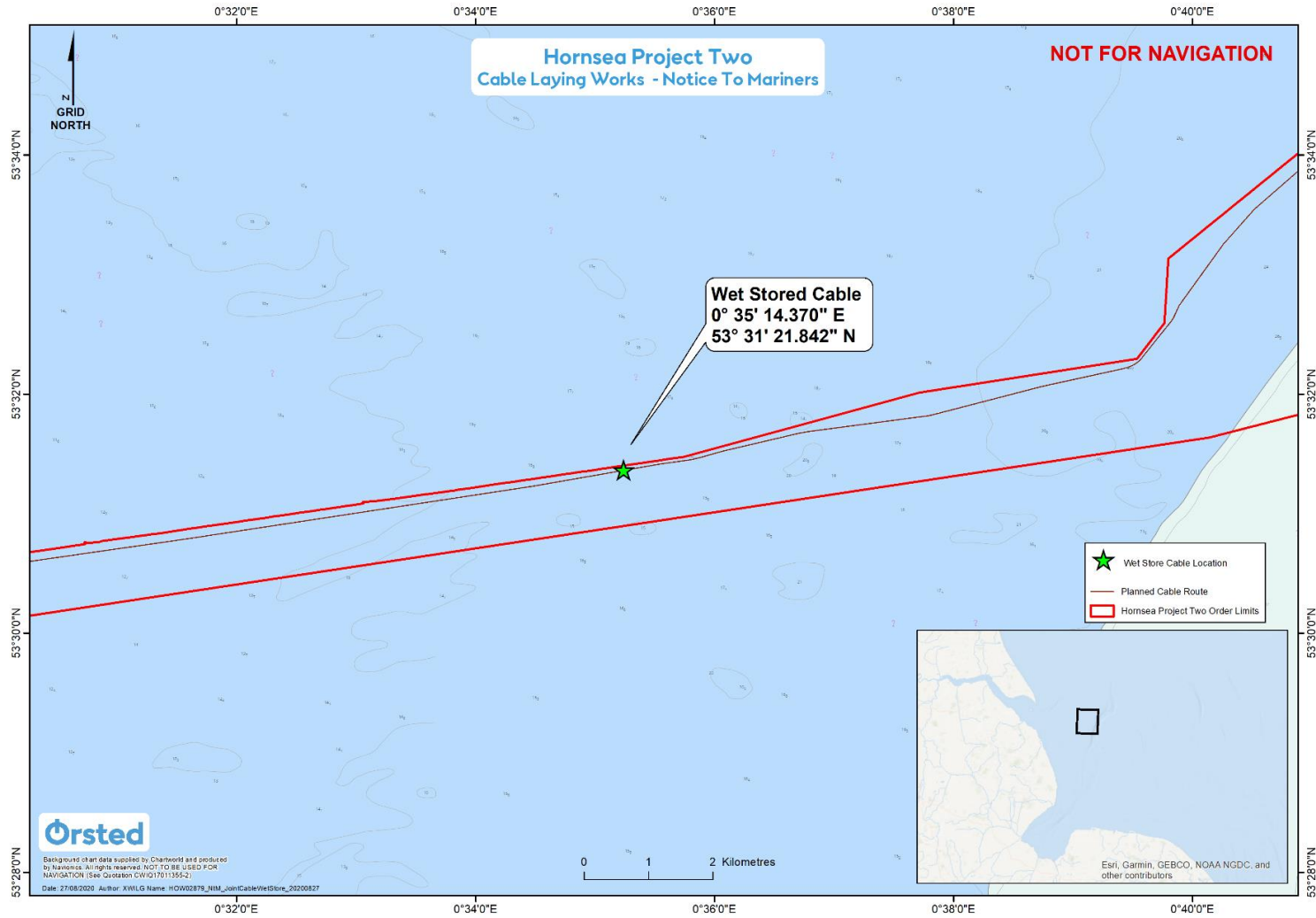
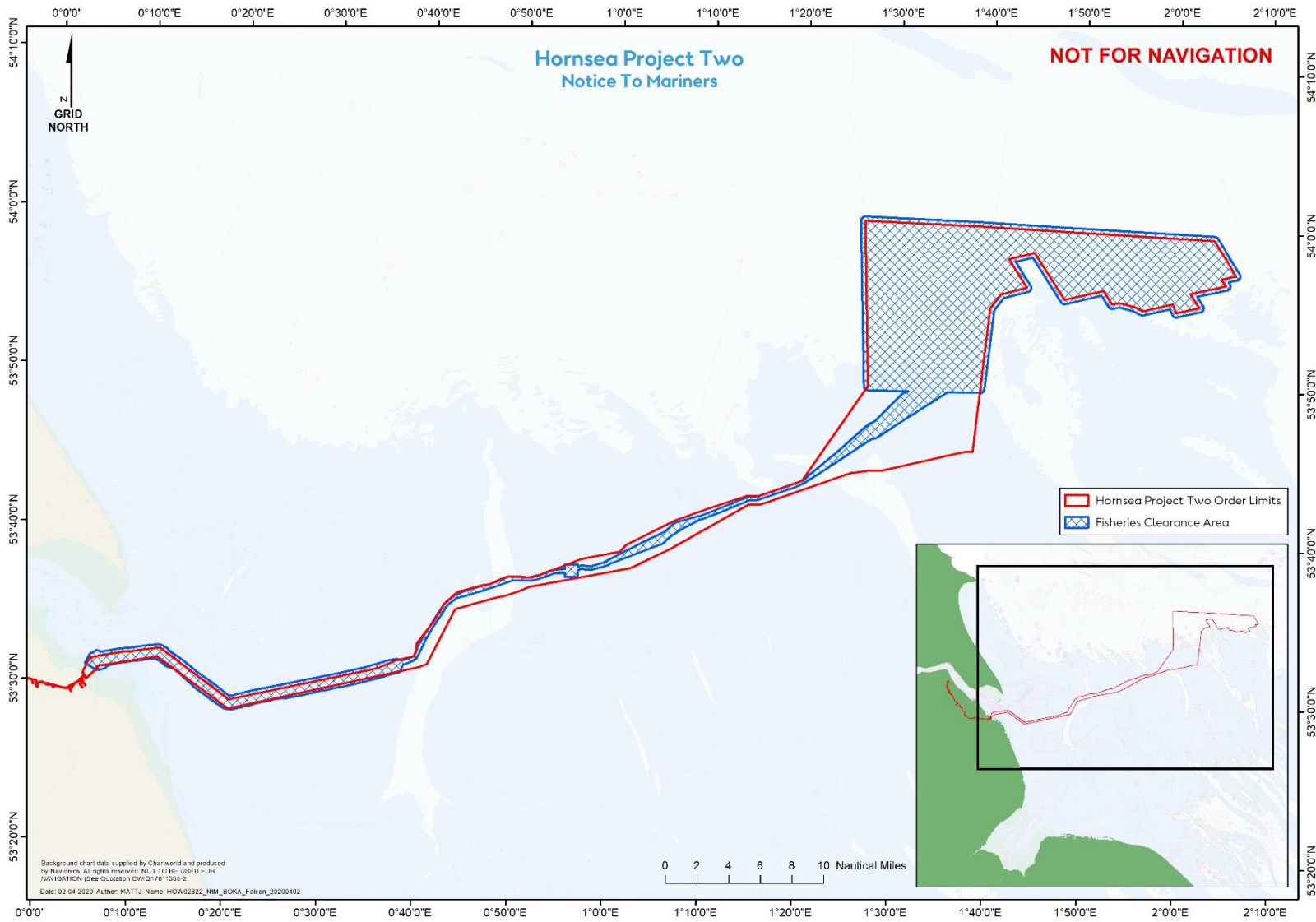


Figure 3. Proposed Construction Area



### 3. PROPOSED ACTIVITIES

#### 3.1 Export Cable Installation

Please be advised that the HBC Achiever will undertake debris removal from the export cable route on or around 30<sup>th</sup> November 2020. In addition to this, Boskalis are temporarily wet storing a cable at the locations provided in Figure 1 and Figure 2. A guard vessel will be present at all times, subject to safe weather conditions, whilst the cable is wet-stored but it is advised that mariners maintain a safe clearance.

This is in addition to ongoing seabed preparation and cable installation and burial activities that will be continual and intermittent through to Q4 2021. The works will be undertaken by a number of vessels at different times according to the Project schedule. Further guard vessels will arrive on site to support works, weather permitting. Details of the vessels are provided in Section 6. When the works are complete, this Notice will be updated and re-issued.

Note that the vessels will have limited manoeuvrability, some vessels will be operating on anchors, and it is requested that all vessels operating near the vessels maintain a safe distance (at least 500m) and pass all vessels at minimum speed.

#### 3.2 Safety

It is requested that anybody having knowledge of any potential objects submerged or moored on the seabed within the survey area that could be damaged or form a hazard to the vessel and its equipment advises the Project's Fishing Industry Liaison of their position and nature. The Project has also requested the clearance of static fishing gear within the boundary shown in Figure 3 and described in Section 7 of this Notice. When surveys commence a listening watch will be maintained on VHF Channel 12 and 16 when within the appropriate port authority area and will actively transmit an AIS signal.

### 4. IMMEDIATE CONTACTS

The contents of this notice are based upon our current understanding of Project Two requirements. A further notice will be issued once activities are completed.

Enquiries regarding the contents of this Notice to Mariners or any other matters should be directed to:

<b>Project Manager (Ørsted)</b> (Office hours only)	Richard Irving	
	Tel: +44 78 5 4276523	E-mail: <a href="mailto:ricir@orsted.co.uk">ricir@orsted.co.uk</a>
<b>Project Manager (Boskalis)</b> (Office hours only)	Steve Marshall	
	Tel: +44 7970 750 385	E-mail: <a href="mailto:steve.marshall@boskalis.com">steve.marshall@boskalis.com</a>

### 5. FISHERIES LIAISON

Onshore Fisheries Liaison is provided by Nick Garside and Sophie Farenden who can be contacted on:

E-mail: <a href="mailto:nick.garside@live.co.uk">nick.garside@live.co.uk</a>	Mob: +44 (0) 7538 827013
Email: <a href="mailto:sophie.farenden@brownmay.com">sophie.farenden@brownmay.com</a>	Mob: +44 (0)7525 128344
Email: <a href="mailto:cdemmerson@live.com">cdemmerson@live.com</a>	Mob: +44 (0)7581 491559


An Offshore Fisheries Liaison Officer is present on the Emswind Guard Vessel contactable on VHF channel 16, if required. An onshore FLO (Chris Emmerson) is also available covering the ongoing works, contactable on the above details.

In the event the Offshore or Onshore Fisheries Liaison is not contactable please direct fisheries enquiries related to the works to the Ørsted Company Fisheries Liaison Officer:

Company Fisheries Liaison Officer – Courtney French	Tel: +44 (0)7796 447372	E-mail: <a href="mailto:CONFR@orsted.co.uk">CONFR@orsted.co.uk</a>
--	-------------------------	--

## 6. VESSELS

Operations will be conducted by a number of vessels as provided below. Additional vessels may mobilise to site as required. Contact can be made directly with the vessels, where necessary, using the contact details listed below. This Notice will be updated with further contact details once confirmed. Client and contractor contact details are provided in Section 4 and 5 of this NtM.

Vessel Details – HBC Achiever	
	
<b>Vessel Type / Function</b>	Diving Support Vessel
<b>Vessel telephone</b>	Mobile: +45 28 56 47 99 V-Sat phone: +45 82 13 10 43
<b>Vessel email</b>	<a href="mailto:achieverbridge@hbc-tec.dk">achieverbridge@hbc-tec.dk</a>
<b>Call Sign</b>	OWMH2
<b>MMSI</b>	219305000

### Vessel Details – Rockpiiper



<b>Vessel Type / Function</b>	Rock Installation
<b>Vessel telephone</b>	Bridge: +31 78 80 80 273 Captain: +31 78 80 80 262 Sat: +87 07 73 1879 51
<b>Vessel email</b>	<a href="mailto:rockpiiper-bridge@boskalis.com">rockpiiper-bridge@boskalis.com</a> <a href="mailto:rockpiiper-captain@boskalis.com">rockpiiper-captain@boskalis.com</a>
<b>Call Sign</b>	5BML3
<b>MMSI</b>	209449000

### Vessel Details – Ndurance



<b>Vessel Type / Function</b>	Cable installation and burial
<b>Vessel telephone</b>	+31 65 109 0370 +31 10 713 0548 (V-sat)
<b>Vessel email</b>	<a href="mailto:ndurance-captain@boskalis.com">ndurance-captain@boskalis.com</a>
<b>Call Sign</b>	5BVH3
<b>MMSI</b>	209851000

**Vessel Details – NKT Victoria**



<b>Vessel Type / Function</b>	Farshore cable installation
<b>Vessel telephone</b>	+47 2240 8110 (Bridge) +47 2240 8120 (Captain)
<b>Vessel email</b>	<a href="mailto:bridge.victoria@remoy.management.no">bridge.victoria@remoy.management.no</a> <a href="mailto:captain.victoria@remoy.management.no">captain.victoria@remoy.management.no</a>
<b>Call Sign</b>	LAWV7
<b>MMSI</b>	257016000

**Vessel Contact Details – Boka Falcon**



<b>Vessel Type / Function</b>	Cable trenching and burial
<b>Vessel telephone</b>	+31 788 080 929
<b>Vessel email</b>	<a href="mailto:bokafalcon-bridge@boskalis.com">bokafalcon-bridge@boskalis.com</a>
<b>Call Sign</b>	ORTD
<b>MMSI</b>	205787000



### Vessel Contact Details – Coastal Challenger



<b>Vessel / Type / Function</b>	Anchor handling tug / pre-lay grapnel run, cable remedial work
<b>Vessel telephone</b>	Mob + 31 13 6 05 784 V-Sat +31 85 00 90 585
<b>Vessel email</b>	<a href="mailto:challenger@coastalworkboats.com">challenger@coastalworkboats.com</a>
<b>Call Sign</b>	PBOC
<b>MMSI</b>	244913000

### Vessel Contact Details – Noordstroom



<b>Vessel / Type / Function</b>	Anchor handling tug
<b>Vessel telephone</b>	+31 10 3403079 +31 10 6690405 +31 653 894479
<b>Vessel email</b>	<a href="mailto:noordstroom@wijngaarden.com">noordstroom@wijngaarden.com</a>
<b>Call Sign</b>	PIWC
<b>MMSI</b>	244006000

### Vessel Contact Details – Viking Energy



<b>Vessel / Type / Function</b>	Anchor handling tug
<b>Vessel telephone</b>	+44 7885 990 682
<b>Vessel email</b>	<a href="mailto:vikingenergy@stewart-marine.co.uk">vikingenergy@stewart-marine.co.uk</a> ; <a href="mailto:operations@landfall.nl">operations@landfall.nl</a>
<b>Call Sign</b>	MEPW5
<b>MMSI</b>	232020323

### Vessel Details – Lingestroom



<b>Vessel Type / Function</b>	AHT
<b>Vessel telephone</b>	+31 (0) 184 78 8128 +31 (0) 612 44 1220
<b>Vessel email</b>	<a href="mailto:Lingestroom@wijngaarden.com">Lingestroom@wijngaarden.com</a>
<b>Call Sign</b>	PICW
<b>MMSI</b>	244016000

### Vessel Contact Details – Maagd




<b>Vessel / Type / Function</b>	Landfall transportation barge
<b>Vessel telephone</b>	n/a
<b>Vessel email</b>	n/a
<b>Call Sign</b>	n/a
<b>MMSI</b>	n/a

### Vessel Contact Details – Spirit



<b>Vessel / Type / Function</b>	Cable installation and burial
<b>Vessel telephone</b>	TBC
<b>Vessel email</b>	TBC
<b>Call Sign</b>	5BWK4
<b>MMSI</b>	212471000

Vessel Details – Titan Endeavour	
	
<b>Vessel Type / Function</b>	Nearshore Survey
<b>Vessel telephone</b>	+44 (0)7867 552553
<b>Vessel email</b>	<a href="mailto:Titan.Endeavour@titansurveys.com">Titan.Endeavour@titansurveys.com</a>
<b>Call Sign</b>	2ELT9
<b>MMSI</b>	235086211

Vessel Details – Ivero	
	
<b>Vessel Type / Function</b>	Farshore survey
<b>Vessel telephone</b>	Mob: +44 (0)7917 477672 Fleet: +870 773 991 015
<b>Vessel email</b>	<a href="mailto:master@ivero.gardline.co.uk">master@ivero.gardline.co.uk</a>
<b>Call Sign</b>	MCJ03
<b>MMSI</b>	232013165

Vessel Details – Dutch Power	
	
<b>Vessel Type / Function</b>	Anchor Handling Tug (NDurance CLV)
<b>Vessel telephone</b>	Mobile: +31 (0)6-54 79 06 86 Mobile International: +372 81 69 60 41 Sat Tel (V-Sat) +31 (0)31-10 669 05 31
<b>Vessel email</b>	<a href="mailto:Tug.dutchpower@gmail.com">Tug.dutchpower@gmail.com</a>
<b>Call Sign</b>	PBTZ
<b>MMSI</b>	246607000

Vessel Details – MCS Sirocco	
	
<b>Vessel Type / Function</b>	CTV
<b>Vessel telephone</b>	+44 7920 569689
<b>Vessel email</b>	<a href="mailto:mcssirocco@maritimecraft.co.uk">mcssirocco@maritimecraft.co.uk</a>
<b>Call Sign</b>	2FFP4
<b>MMSI</b>	235090843

**Vessel Details – GV Adorne**



<b>Vessel Type / Function</b>	Guard Vessel
<b>Vessel telephone</b>	Sat phone: (00) 44 1947 750717
<b>Vessel email</b>	<a href="mailto:gvadorne@gmail.com">gvadorne@gmail.com</a>
<b>Call Sign</b>	MFQ18
<b>MMSI</b>	232023203

**Vessel Details – Isla B**



<b>Vessel Type / Function</b>	Guard Vessel
<b>Vessel telephone</b>	Sat Phone: +44 (0) 1795 505936 Mobile: +44 (0) 07415 940054
<b>Vessel email</b>	<a href="mailto:islabbridge@gmail.com">islabbridge@gmail.com</a>
<b>Call Sign</b>	MNVM2
<b>MMSI</b>	232007860

**Vessel Details – Karelle**



<b>Vessel Type / Function</b>	Guard Vessel
<b>Vessel telephone</b>	+447770823004 +447786512045
<b>Vessel email</b>	<a href="mailto:KMSKarelle@gmail.com">KMSKarelle@gmail.com</a>
<b>Call Sign</b>	MWXN5
<b>MMSI</b>	234325000

**Vessel Details – Defiant**



<b>Vessel Type / Function</b>	Guard Vessel
<b>Vessel telephone</b>	+44 (0) 1261455459
<b>Vessel email</b>	gvdefiant@gmail.com
<b>Call Sign</b>	MLAS6
<b>MMSI</b>	233651000

**Vessel Details – Ability**



<b>Vessel Type / Function</b>	Guard Vessel
<b>Vessel telephone</b>	+44 (0) 1346 490737
<b>Vessel email</b>	<a href="mailto:kmsability@gmail.com">kmsability@gmail.com</a>
<b>Call Sign</b>	MDFW3
<b>MMSI</b>	235014666

**Vessel Details – Adventure**



<b>Vessel Type / Function</b>	Guard Vessel
<b>Vessel telephone</b>	+44 (0) 1947 750717
<b>Vessel email</b>	<a href="mailto:gvadventure@gmail.com">gvadventure@gmail.com</a>
<b>Call Sign</b>	2IFE4
<b>MMSI</b>	235109237



**Vessel Details – Resilient**



<b>Vessel Type / Function</b>	Guard Vessel
<b>Vessel telephone</b>	+44 (0) 2841140788
<b>Vessel email</b>	gvresilient@gmail.com
<b>Call Sign</b>	GSSE9
<b>MMSI</b>	232711000

**Vessel Details – Diligent**



<b>Vessel Type / Function</b>	Guard Vessel
<b>Vessel telephone</b>	+44 (0) 2038 074145
<b>Vessel email</b>	<a href="mailto:gvdiligent@gmail.com">gvdiligent@gmail.com</a>
<b>Call Sign</b>	MJZK7
<b>MMSI</b>	232007970

Vessel Details – NG Worker	
	
Vessel Type / Function	Post-Lay Burial / Remedial Works
Vessel telephone	+39 (0) 3429976700
Vessel email	<a href="mailto:ngworker@nextgeosolutions.com">ngworker@nextgeosolutions.com</a>
Call Sign	ICID
MMSI	247440700

## 7. COORDINATES

### Wet-stored cables coordinates

Wet stored cable	Latitude (DDM) (WGS84)	Longitude (DDM) (WGS84)	Latitude (DD) (WGS84)	Longitude (DD) (WGS84)
Figure 1	53° 32.176' N	0° 12.631' E	53.536262 N	0.210511 E
Figure 2	53° 31.364' N	0° 35.240' E	53.522734 N	0.587325 E

### Shown in Figure 3 – Proposed construction area

Latitude (DMS) (WGS84)	Longitude (DMS) (WGS84)
53° 59' 47,212" N	2° 4' 13,879" E
53° 57' 33,751" N	2° 6' 35,650" E
53° 57' 15,701" N	2° 6' 36,035" E
53° 57' 6,478" N	2° 6' 18,896" E
53° 56' 59,777" N	2° 5' 28,497" E
53° 56' 42,915" N	2° 5' 36,351" E
53° 56' 28,883" N	2° 5' 17,519" E
53° 56' 3,483" N	2° 2' 8,588" E
53° 55' 27,479" N	2° 2' 46,083" E
53° 55' 15,410" N	2° 2' 44,720" E
53° 55' 6,438" N	2° 2' 32,255" E
53° 54' 43,304" N	1° 59' 50,397" E

Latitude (DMS) (WGS84)	Longitude (DMS) (WGS84)
53° 54' 49,180" N	1° 59' 21,898" E
53° 55' 12,752" N	1° 59' 2,060" E
53° 54' 48,758" N	1° 56' 10,242" E
53° 55' 4,977" N	1° 55' 8,846" E
53° 55' 17,637" N	1° 53' 38,207" E
53° 55' 12,551" N	1° 52' 45,906" E
53° 55' 19,225" N	1° 52' 28,565" E
53° 56' 0,723" N	1° 51' 42,606" E
53° 55' 28,077" N	1° 47' 37,142" E
53° 55' 35,546" N	1° 47' 20,574" E
53° 58' 20,012" N	1° 44' 17,211" E
53° 58' 5,598" N	1° 42' 39,466" E
53° 56' 39,567" N	1° 44' 13,897" E
53° 56' 25,332" N	1° 44' 17,657" E
53° 56' 11,448" N	1° 43' 56,913" E
53° 55' 46,244" N	1° 41' 19,719" E
53° 55' 1,973" N	1° 40' 23,796" E
53° 50' 2,447" N	1° 39' 30,939" E
53° 49' 49,003" N	1° 39' 16,731" E
53° 49' 46,428" N	1° 35' 32,259" E
53° 46' 48,702" N	1° 28' 4,620" E
53° 46' 42,946" N	1° 27' 31,338" E
53° 43' 49,843" N	1° 20' 24,581" E
53° 42' 44,084" N	1° 15' 38,529" E
53° 42' 41,344" N	1° 14' 42,628" E
53° 41' 21,520" N	1° 9' 20,997" E
53° 40' 22,700" N	1° 6' 37,474" E
53° 39' 47,066" N	1° 5' 28,175" E
53° 38' 16,403" N	0° 59' 25,479" E
53° 38' 2,077" N	0° 57' 59,391" E
53° 38' 4,166" N	0° 56' 57,224" E
53° 37' 58,937" N	0° 56' 42,467" E
53° 37' 33,594" N	0° 56' 40,248" E
53° 37' 31,948" N	0° 55' 15,847" E
53° 37' 47,540" N	0° 55' 10,458" E
53° 37' 44,942" N	0° 54' 9,203" E
53° 37' 14,693" N	0° 51' 46,505" E
53° 37' 14,455" N	0° 49' 47,661" E
53° 36' 44,170" N	0° 47' 39,734" E
53° 36' 0,540" N	0° 43' 53,312" E
53° 35' 29,375" N	0° 42' 55,137" E
53° 33' 22,426" N	0° 40' 48,516" E
53° 32' 7,546" N	0° 39' 51,893" E
53° 31' 43,170" N	0° 38' 30,952" E
53° 31' 12,017" N	0° 38' 4,665" E

Latitude (DMS) (WGS84)	Longitude (DMS) (WGS84)
53° 30' 18,230" N	0° 32' 55,750" E
53° 29' 22,551" N	0° 26' 30,856" E
53° 29' 12,115" N	0° 24' 45,142" E
53° 28' 29,570" N	0° 20' 21,581" E
53° 28' 37,086" N	0° 19' 22,247" E
53° 29' 50,796" N	0° 16' 18,425" E
53° 30' 54,775" N	0° 14' 10,391" E
53° 31' 2,707" N	0° 13' 24,903" E
53° 31' 31,865" N	0° 12' 8,960" E
53° 31' 8,839" N	0° 8' 14,664" E
53° 30' 56,336" N	0° 7' 6,528" E
53° 30' 48,777" N	0° 7' 1,728" E
53° 30' 39,121" N	0° 6' 17,311" E
53° 30' 39,405" N	0° 5' 52,891" E
53° 31' 5,230" N	0° 4' 40,609" E
53° 31' 48,148" N	0° 5' 14,392" E
53° 32' 0,611" N	0° 5' 54,673" E
53° 31' 55,416" N	0° 6' 23,153" E
53° 32' 11,157" N	0° 8' 27,502" E
53° 32' 31,751" N	0° 12' 37,383" E
53° 32' 19,716" N	0° 13' 26,968" E
53° 32' 8,099" N	0° 13' 44,182" E
53° 29' 28,003" N	0° 20' 8,972" E
53° 31' 7,268" N	0° 31' 29,653" E
53° 31' 33,595" N	0° 34' 20,769" E
53° 32' 0,629" N	0° 36' 36,759" E
53° 32' 9,093" N	0° 37' 40,901" E
53° 32' 4,863" N	0° 38' 20,144" E
53° 32' 20,102" N	0° 39' 23,807" E
53° 33' 35,071" N	0° 40' 20,327" E
53° 35' 40,809" N	0° 42' 26,986" E
53° 36' 18,396" N	0° 43' 39,237" E
53° 36' 44,069" N	0° 45' 23,338" E
53° 37' 7,109" N	0° 47' 34,987" E
53° 37' 33,029" N	0° 49' 10,746" E
53° 37' 33,513" N	0° 51' 28,386" E
53° 38' 2,090" N	0° 53' 44,466" E
53° 38' 9,119" N	0° 55' 9,396" E
53° 38' 26,805" N	0° 55' 12,814" E
53° 38' 28,306" N	0° 56' 36,030" E
53° 38' 20,125" N	0° 56' 41,437" E
53° 38' 24,187" N	0° 57' 1,622" E
53° 38' 21,625" N	0° 57' 55,787" E
53° 38' 37,874" N	0° 59' 18,954" E
53° 40' 39,445" N	1° 5' 39,744" E

Latitude (DMS) (WGS84)	Longitude (DMS) (WGS84)
53° 41' 15,927" N	1° 6' 49,625" E
53° 41' 48,180" N	1° 9' 45,281" E
53° 43' 0,796" N	1° 14' 34,354" E
53° 43' 3,158" N	1° 15' 27,373" E
53° 44' 5,955" N	1° 20' 8,767" E
53° 45' 51,124" N	1° 23' 36,801" E
53° 47' 35,307" N	1° 26' 46,815" E
53° 47' 58,031" N	1° 27' 46,976" E
53° 49' 40,483" N	1° 30' 32,038" E
53° 49' 47,250" N	1° 30' 53,561" E
53° 49' 47,882" N	1° 26' 56,955" E
53° 49' 52,264" N	1° 26' 39,020" E
53° 50' 2,497" N	1° 26' 28,120" E
54° 0' 31,528" N	1° 25' 47,038" E
54° 0' 42,580" N	1° 25' 52,784" E
54° 0' 49,685" N	1° 26' 7,903" E
54° 0' 37,879" N	1° 38' 38,420" E
53° 59' 56,311" N	2° 3' 47,577" E
53° 59' 47,212" N	2° 4' 13,879" E