

LYNN AND INNER DOWSING OFFSHORE WIND FARMS

Notice to Mariners

11th November 2020 to 25th November 2020

Scope of Works – Major Component Replacements

Lynn and Inner Dowsing (LID) Offshore Wind Farm wish to advise mariners that the Jack Up vessel Pacific Orca is planned to commence works within the boundary of the wind farm on 11th November 2020.

The duration of the work scope is planned to be no longer than 14 days subject to weather conditions.

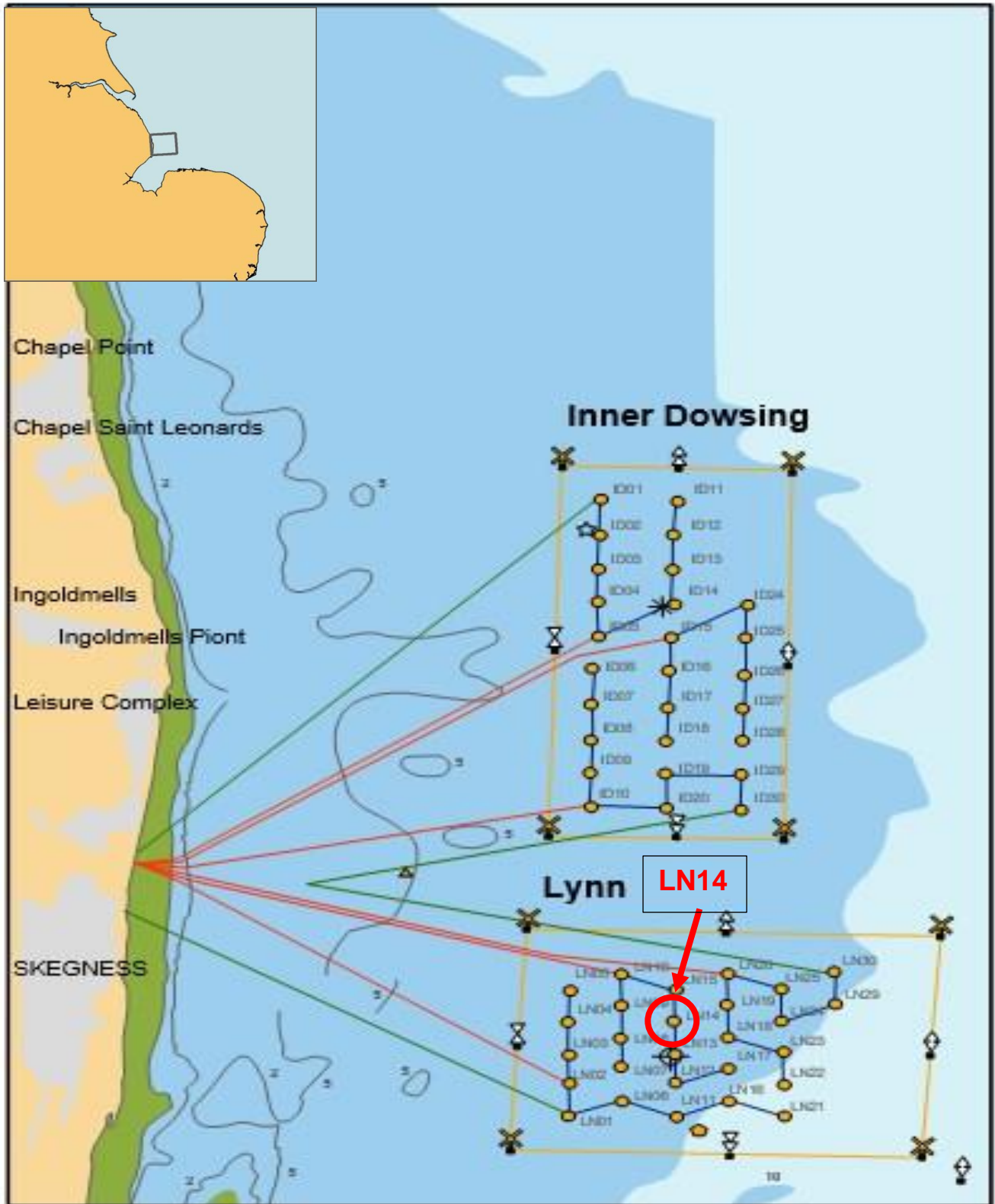
The wind turbine location is as below:

1. LN14 – Coordinates: LATITUDE - 53°08.3630'N LONGITUDE - 000°26.9672'E



Vessel: Pacific Orca
Length: 160.90 m
Beam: 49.00 m
Call Sign: 5BRE3

Lynn and Inner Dowsing Wind Turbine Locations



Mariners should maintain a safe distance of 500m from the Jack Up vessel when it is on station adjacent to the wind turbine.

Mariners are advised to exert caution in the vicinity of the wind farm during this time and should be communicated with the SiemensGamesa Operational Marine Controller when operating near the site

SiemensGamesa Operational Marine Controller

Email: LIDOperationalmarinecontrol@siemensgamesa.com

Tel: 01472 806851 / 07921 249544

Radio Channel: 161.175MHz

Windfarm Liaison

Mariners are also advised that Lynn and Inner Dowsing queries should be directed through the Site Owners Representatives – XceCo

Simon Matson
Tel: 07878207879
Email: simon@xceco.co.uk

Tony Lyon
Tel: 07789 573238
Email: tony@xceco.co.uk