

Ørsted - East Coast Operational Assets

Notice to Mariners

Period of Notice: November 2020

Version: Issue 3

Table of Contents

1	Introduction	3
1.1	Subsea Cables	3
1.2	Wind Farm Positional Data	4
2	Key Contacts	4
3	Notice to Mariners Summary:	5
4	Race Bank – Notice to Mariners	6
4.1	Lighting and Marking Status	6
4.2	Other Operations	6
4.2.1	Subsea cable repair	8
5	Westermose Rough – Notice to Mariners	10
5.1	Lighting and Marking Status	10
5.2	Other Operations	10
5.2.1	Diving Operations / Filming	10
6	Lincs – Notice to Mariners	12
6.1	Lighting and Marking Status	12
6.2	Other Operations	12
6.2.1	HSS Bearing replacement	12
6.2.2	Blade repair	13
6.2.3	Above water inspections	13
7	Gunfleet Sands – Notice to Mariners	14
7.1	Lighting and Marking Status	14
7.2	Other Operations	14
7.2.1	Above water inspections	14
8	Hornsea One – Notice to Mariners	15
8.1	Lighting and Marking Status	15
8.2	Other Operations	15
8.2.1	Array cable remedial work	15

1 Introduction

Ørsted is an offshore wind farm owner and operator with ten operational wind farms in UK waters. Of these ten, the following offshore wind farms are located off the East Coast of England:

- Gunfleet Sands
- Westernmost Rough
- Race Bank
- Lincs
- Hornsea One

The purpose of this monthly Notice to Mariners (NtM) is to ensure that mariners are aware of any non-routine operations across the East Coast assets that could pose a risk to other sea users. Safety is paramount to Ørsted and this notice should assist in ensuring that both mariners and the Ørsted operational team can operate safely offshore. This NtM will provide:

- A regular, clear and consistent overview of non-routine operations
- Updates relating to lighting and marking
- Key contact details
- Access to detailed site information and figures
- Clarity on when Safety Zones and recommended safe separation distances are in force or requested



This Notice to Mariners will not provide:

- Information relating to routine maintenance carried out by Crew Transfer Vessels (CTV) or Service Operation Vessels (SOV).
- Any information relating to export cables
- Any information relating to offshore wind farms currently in development, construction or not operated by Ørsted

Subsea Cables

Subsea cables are installed across each offshore wind farm and are marked on the KIS ORCA charts referenced in Section 1.2. Please note the following advice from NP 100 The Mariners Handbook "Every care should be taken to avoid anchoring, trawling, fishing, dredging, drilling, or carrying out any other activity in the vicinity of cables which might damage them." This warning is repeated on all admiralty charts.

Wind Farm Positional Data

KIS ORCA Awareness Charts (including the layout and coordinates) and Fishing Plotter Files of the offshore assets referenced in this NtM can be found via the KIS ORCA website: <http://www.kis-orca.eu/downloads#.XWUTQUxFwJZ>. Should mariners require further information or any data in a format that can be used in a plotter or other device, please contact the Company Fisheries Liaison Officer, listed in Section 2 below.

2 Key Contacts

For further information on any of the activities listed within this notice, please use the contact details listed below.

Site	Ørsted Mailbox/ Offshore Coordination	Fisheries Industry Representative
Race Bank	Phone: 07826 943808 Email: rowoffshorec@orsted.co.uk	Ady Woods Phone: 07468 898948 Email: firwoods@hotmail.com
Westermost Rough	Phone: 07867 674941 Email: wmroffshorec@orsted.co.uk	Guy Pasco Phone: 07880 362082 Email: guy@seascopefisheries.co.uk
Lincs	Phone: 07766443319 Email: lincsoffshorec@orsted.co.uk	Ady Woods Phone: 07468 898948 Email: firwoods@hotmail.com
Gunfleet Sands		Merlin Jackson Phone: 07989 520484 Email: merlinjackson@btinternet.com
Hornsea One	Phone: 07775005465 Email: HOWoffshoreC@orsted.co.uk	Nick Garside Phone: 07538 827013 Email: nick.garside@live.co.uk

Company Fisheries Liaison Officer

The Ørsted Company Fisheries Liaison Officer can be contacted using the details below:

Courtney French
Email: CONFR@Orsted.co.uk

3 Notice to Mariners Summary:

Site	Lighting and Marking Status	Survey	Jack-Up Vessel	Other Works
Race Bank	A06 Fog signal inoperative.	Yes, MHO Grimsby	None	Subsea cable repair * °
Westermost Rough	OK	None	None	Diving operations/filming.
Lincs	OK	None	None	HSS Bearing replacement, Above water inspections.
Gunfleet Sands	OK	None	Wind Enterprise**	Above water inspections.
Hornsea One	OK	None	None	Array cable campaign*°.

* Formal 500m safety zone in place

° Licensable activity

** 500m safety distance requested

*** 200m safety distance requested

4 Race Bank – Notice to Mariners

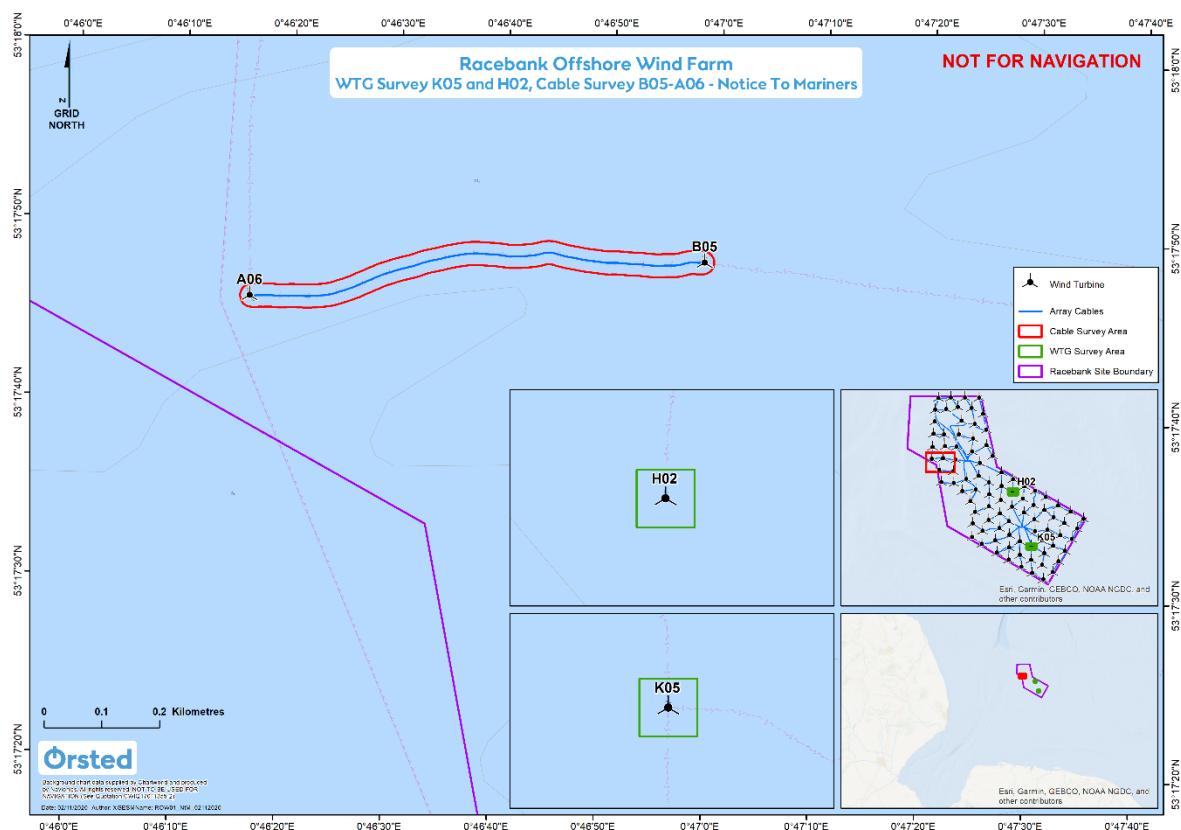
4.1 Lighting and Marking Status

The lighting and/ or navigational warning systems are currently operational there is however a known fault with the fog signal on location A06.

4.2 Other Operations


Survey operations to take place in the vicinity of A06 to B05 and H02 and K05. Approx start date 4th Nov, works will take 2 days, area shown below.

Figure 1



WTG	Latitude	Longitude
A06	53° 17.763'N	00° 46.274'E
B05	53° 17.807'N	00° 46.962'E
H02	53° 16.636'N	00° 51.388'E
K05	53° 14.619'N	00° 52.633'E

Vessel details


General Information		Vessel Picture
Name	MHO Grimsby	
Flag	Danish	
Year Built	2016	
IMO Number	9766243	
Call Sign	OYKR2	
Vessel Contact Details		
Bridge	+44 07868102843	
Party Chief	Dan Knudsen	
Email	mho-grimsby@mho-co.dk	

4.2.1 Subsea cable repair

We are planning to conduct a subsea cable repair which is due to commence on the 12th November. We anticipate the work to last around 21 days.

Mariners are requested to remain a safe distance of 500m from C.S Sovereign when it is observed on site.

Vessel details

General Information		Vessel Picture
Name	C.S. Sovereign	
Flag	Southampton, England	
Year Built	1990	
IMO Number	8918629	
Call Sign	MNNU8	
Vessel Contact Details		
Bridge	07469350109	
Party Chief		
Email	Nicholas.hillcoat@globalmarine.group	


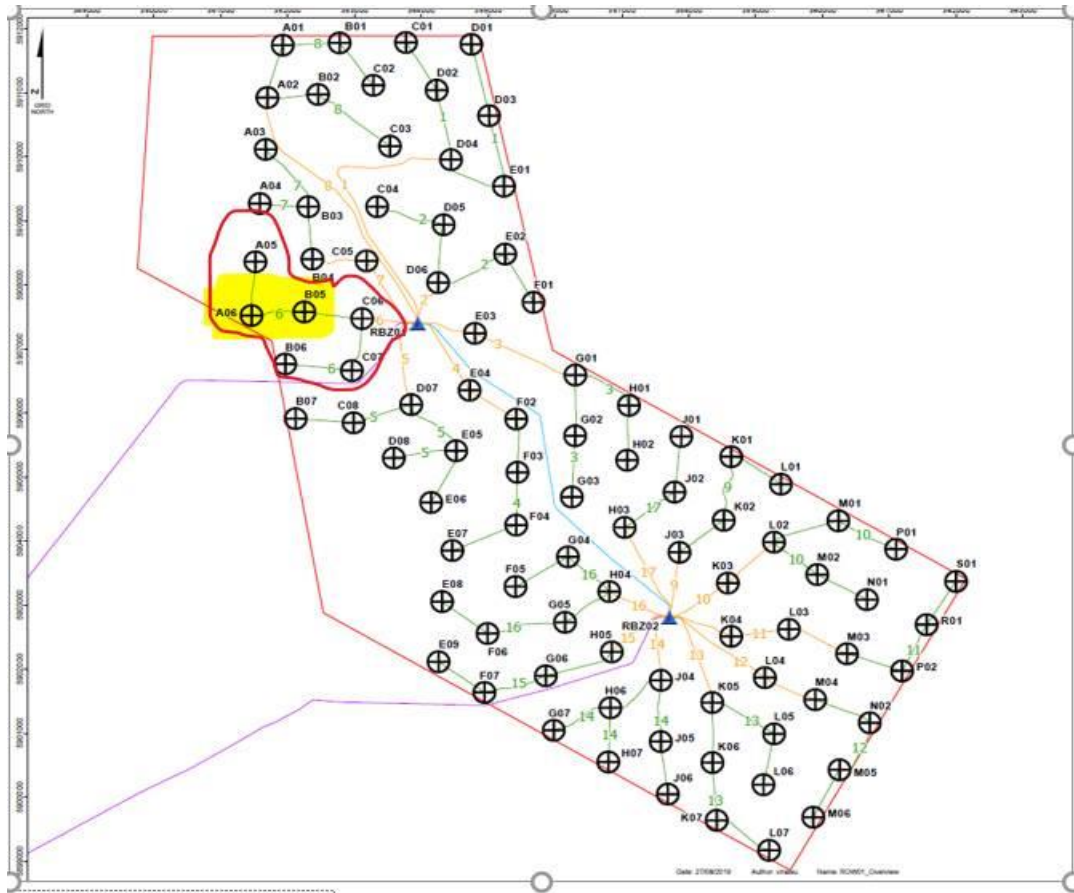
General Information		Vessel Picture
Name	Olympic Delta	
Flag	Norway	
Year Built	2015	
IMO Number	9745768	
Call Sign	JWOH3	
Sign		
Vessel Contact Details		
Bridge	+47 700 81200	
Party Chief		
Email	post@olympic.no	

Figure 2



WTG	Latitude	Longitude
A06	53° 17.763'N	00° 46.274'E
B05	53° 17.807'N	00° 46.962'E

5 Westermost Rough – Notice to Mariners

5.1 Lighting and Marking Status

The lighting and/ or navigational warning systems are currently operational. No planned outages.

5.2 Other Operations

5.2.1 Diving Operations / Filming

Vessel, Huntress will be conducting diving operations for filming purposes at Wind Turbine location C07 as identified in figure 1 below. It is planned to commence in November.

Vessel Information


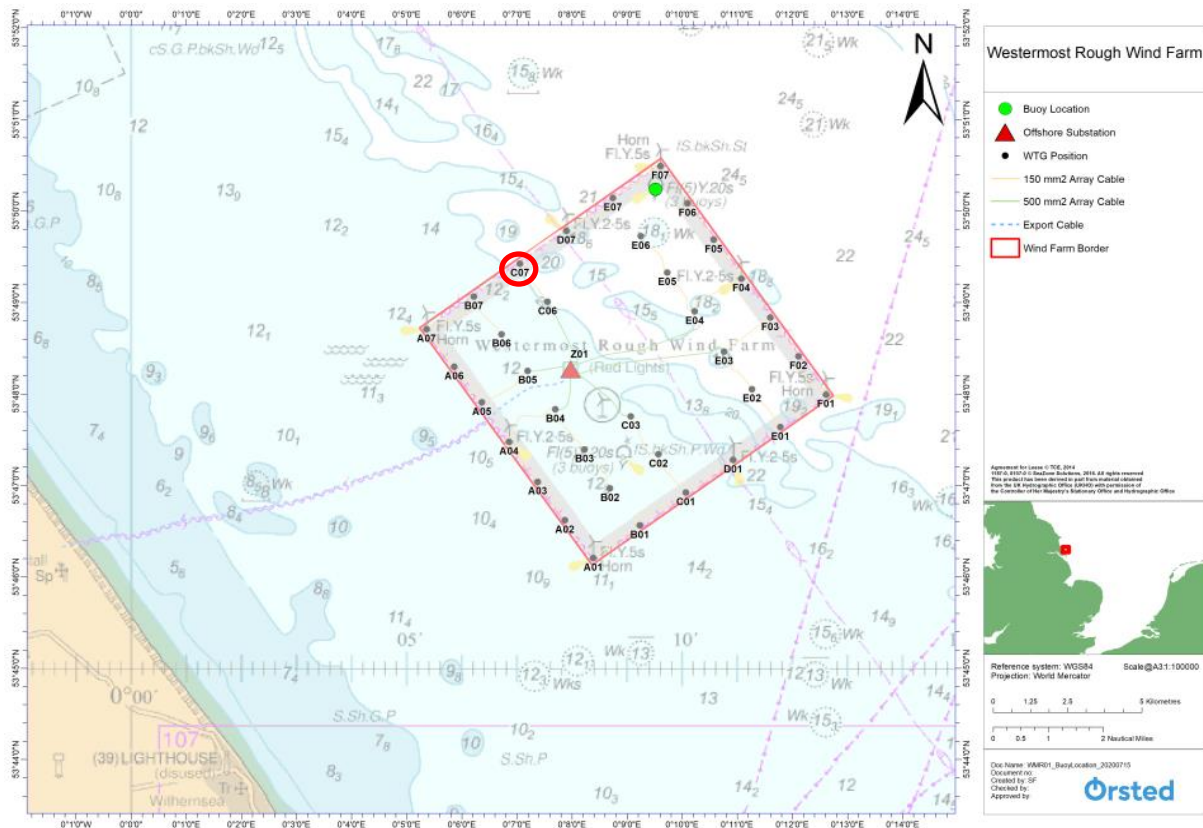
General Information		Vessel Picture
Name	The R/V Huntress	
Flag	UK	
Year Built	2011	
IMO Number	None	
Call Sign	2ETP3	
Vessel Contact Details		
Bridge	07902 812167	
Party Chief	Jamie Robertson	
Email	j.robertson@hfig.org.uk	

Figure 1



6 Lincs – Notice to Mariners

6.1 Lighting and Marking Status

The lighting and/ or navigational warning systems are currently operational. No planned outages.

6.2 Other Operations

6.2.1 HSS Bearing replacement

On the 2nd November we will be replacing the HSS bearing on several locations shown in table 1. The work is anticipated to last 14 days.

Vessel Information

General Information		
Name	Kitty Petra	
Flag	UK	
Year Built	2014 - Spain	
IMO Number	235103572	
Call Sign	2HGW7	
Vessel Contact Details		
Bridge	GSM Mobile: +44 7415516652	
Party Chief	Leo Hambro	
Email	kittypetra@tidal-transit.com	

Table 1

WTG	Latitude	Longitude
LS67	53° 09.774'N	00° 31.047'E
LS39	53° 12.888'N	00° 29.968'E
LS22	53° 12.060'N	00° 29.436'E
LS74	53° 07.993'N	00° 28.738'E
LS06	53° 12.299'N	00° 28.487'E
LS10	53° 10.607'N	00° 28.556'E
LS23	53° 11.687'N	00° 29.424'E
LS61	53° 11.790'N	00° 30.935'E
LS72	53° 12.198'N	00° 27.611'E

6.2.2 Blade repair

Around the 16th November we will be conducting a blade repair on location LS54. A 500m exclusion zone will be required whilst the work is carried out.

Vessel Information

General Information		
Name	Kitty Petra	
Flag	UK	
Year Built	2014 - Spain	
IMO Number	235103572	
Call Sign	2HGW7	
Vessel Contact Details		
Bridge	GSM Mobile: +44 7415516652	
Party Chief	Leo Hambro	
Email	kittypetra@tidal-transit.com	

Table 1

WTG	Latitude	Longitude
LS54	53° 14.170'N	00° 30.293'E

6.2.3 Above water inspections

On the 4th November we will conduct inspections within the WTG structure, it is expected to last until December.

General Information		Vessel Picture
Name	WEM2	
Flag	British	
Year	2018	
MMSI	232013885	
Call	MCPB7	
Vessel Contact Details		
Bridge	001 904596 3780 (Sat phone only)	
Party Chief	Agent: Torben Kuehnel: Email: torben.kuehnel@offshoreservice.de	
Email	wem2@windenergymarine.com	

7 Gunfleet Sands – Notice to Mariners

7.1 Lighting and Marking Status


The lighting and/ or navigational warning systems are currently operational. No planned outages.

7.2 Other Operations

7.2.1 Above water inspections

On the 3rd November we will conduct inspections within all of the WTG structures, it is expected to last until December.

Vessel Information

General Information		Vessel Picture
Name	Master P	
Flag	UK	
Year Built	2014	
IMO Number	Not registered due to size	
Call Sign	2HE07	
Vessel Contact Details		
Bridge	07816 296794	
Party Chief	TBC	
Email	masterp@offshoreturbineservices.co.uk	

8 Hornsea One – Notice to Mariners

8.1 Lighting and Marking Status

The lighting and/ or navigational warning systems are currently operational. No planned outages.

8.2 Other Operations

8.2.1 Array cable remedial work

Remedial work will take place on HOW01 in the western section shown on figure 4 below. Work is due to commence on 9th November 2020 until February 2021.

There will also be a re-burial campaign in the Eastern section shown in figure 5 and table 1.

Mariners must observe an approved safety zone of 500m whenever The Livingstone, Havila Phoenix, Viking Neptune & Wind Innovation are next to an OSS or WTG. A minimum separation distance of 500m is also requested when the vessel is observed manoeuvring into position.

Figure 4

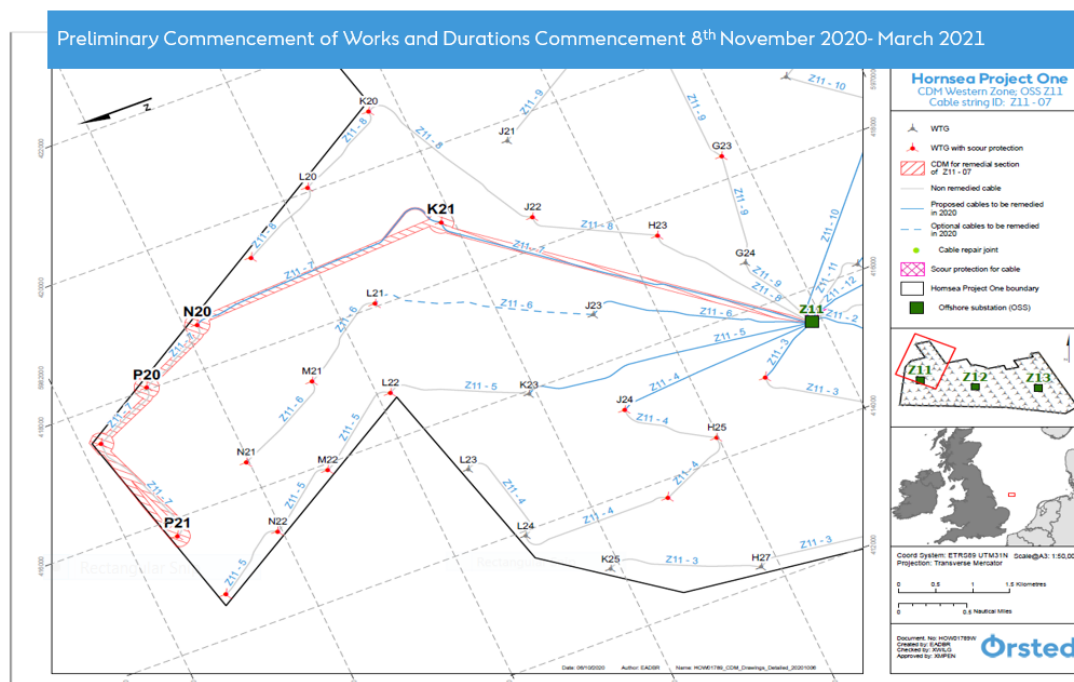


Figure 5

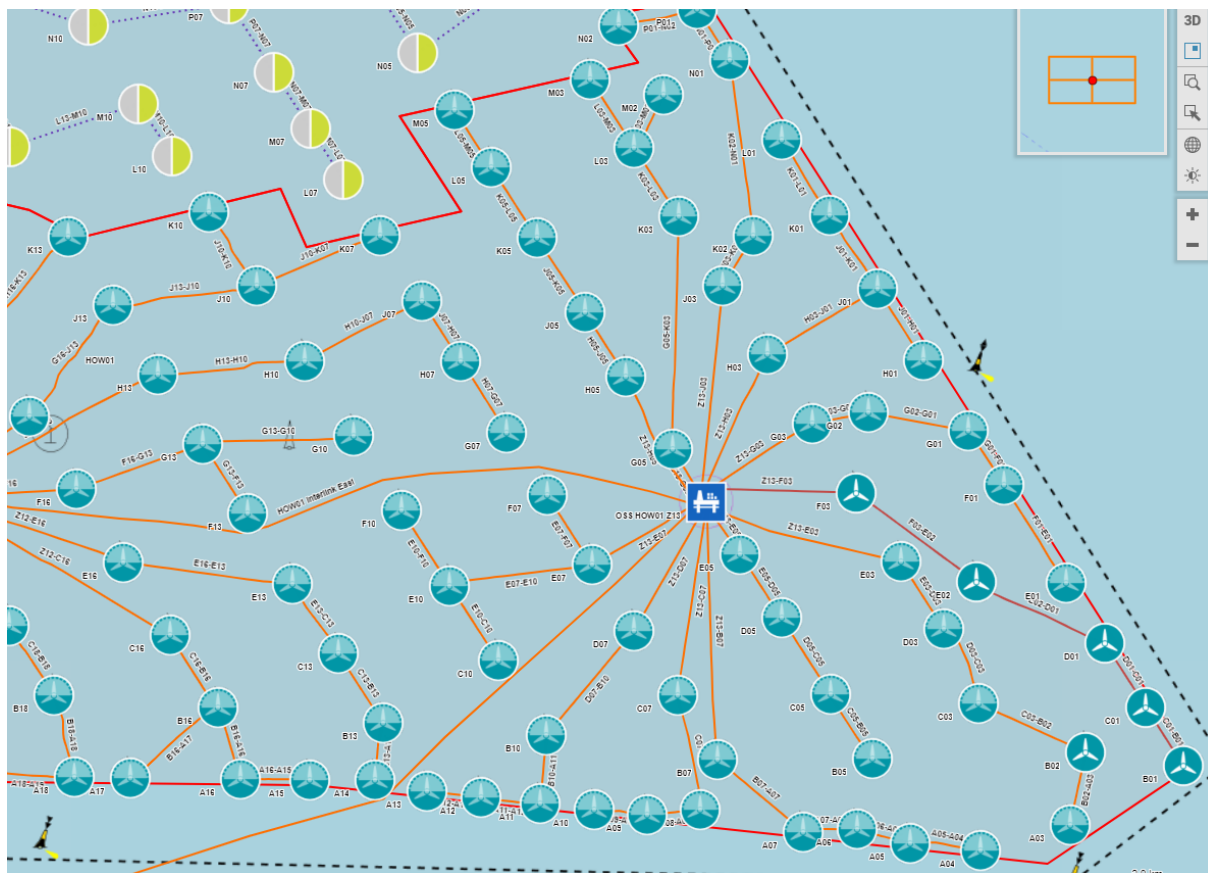





Table 1

String ID	Burial Vessel	String ID	Burial Vessel
	Havila Phoenix		Havila Phoenix
Z13 – C07	01/12/20	B07 – A07	07/12/20
Z13 – H05	01/12/20	Z13 – B07	08/12/20
K03 – L03	02/12/20	D07 – B10	09/12/20
G05 – K03	02/12/20	Z13 – D07	10/12/20
Z13 – J03	04/12/20	Z13 – E03	01/12/20
P01 – N02	04/12/20	Z13 – F03	01/12/20
Z13 – H03	05/12/20	F03 – E02	01/12/20
D03 – C03	06/12/20		

Vessel Information

General Information		Vessel Picture
Name	Havila Phoenix	
Flag	Bahamas	
Year	2009	
MMSI	311000229	
Call	C6BD2	
Vessel Contact Details		
Bridge	TBC	
Party Chief	TBC	
Email	bridge.phoenix@havalaship.com	

General Information		Vessel Picture
Name	Living Stone	
Flag	NL	
Year Built	2018	
MMSI	244010952	
Call Sign	9776925	
Vessel Contact Details		
Bridge	+4942151721919	
Party Chief	TBC	
Email		

General Information		Vessel Picture
Name	Wind Innovation	
Flag	United Kingdom	
Year	1999	
MMSI	235113838	
Call Sign	2IYP3	
Vessel Contact Details		
Bridge	+45 69669981	
Party Chief	TBC	
Email	Bridge.wi@c-bed.com	

General Information		Vessel Picture
Name	Viking Neptun	
Flag	Norway	
Year Built	2015	
MMSI Number	258789000	
Call Sign	LAYH7	
Vessel Contact Details		
Bridge	TBC	
Party Chief	TBC	
Email	bridge.viking-neptun@eidesvik.no	

Figure 5 HOW01 coordinates

ID	Structure	Latitude	Longitude
A03	WTG	53° 49' 36.362" N	2° 11' 58.401" E
A04	WTG	53° 49' 21.635" N	2° 10' 32.853" E
A05	WTG	53° 49' 25.952" N	2° 9' 25.058" E
A06	WTG	53° 49' 33.690" N	2° 8' 34.653" E
A07	WTG	53° 49' 32.464" N	2° 7' 42.469" E
A08	WTG	53° 49' 44.789" N	2° 6' 3.244" E
A09	WTG	53° 49' 41.917" N	2° 5' 12.846" E
A10	WTG	53° 49' 45.144" N	2° 4' 21.583" E

A11	WTG	53° 49' 48.364" N	2° 3' 30.317" E	C30	WTG	53° 51' 44.759" N	1° 39' 21.566" E
A12	WTG	53° 49' 51.969" N	2° 2' 32.812" E	D01	WTG	53° 51' 19.036" N	2° 12' 31.748" E
A13	WTG	53° 49' 55.157" N	2° 1' 41.865" E	D03	WTG	53° 51' 27.125" N	2° 9' 57.215" E
A14	WTG	53° 50' 1.402" N	2° 0' 51.654" E	D05	WTG	53° 51' 33.204" N	2° 7' 21.543" E
A15	WTG	53° 50' 1.857" N	1° 59' 49.102" E	D07	WTG	53° 51' 26.092" N	2° 5' 0.231" E
A16	WTG	53° 50' 2.288" N	1° 58' 42.072" E	D25	WTG	53° 51' 49.986" N	1° 44' 39.770" E
A17	WTG	53° 50' 2.970" N	1° 56' 57.238" E	D27	WTG	53° 52' 5.499" N	1° 42' 34.723" E
A18	WTG	53° 50' 3.298" N	1° 56' 3.042" E	D28	WTG	53° 51' 59.883" N	1° 40' 49.047" E
A19	WTG	53° 50' 5.340" N	1° 54' 34.121" E	E01	WTG	53° 51' 53.062" N	2° 11' 54.701" E
A20	WTG	53° 50' 4.153" N	1° 53' 39.481" E	E02	WTG	53° 51' 53.838" N	2° 10' 28.350" E
A21	WTG	53° 50' 4.804" N	1° 52' 25.513" E	E03	WTG	53° 52' 5.000" N	2° 9' 15.872" E
A22	WTG	53° 50' 5.059" N	1° 50' 57.533" E	E05	WTG	53° 52' 9.257" N	2° 6' 42.135" E
A23	WTG	53° 50' 11.478" N	1° 49' 42.519" E	E07	WTG	53° 52' 3.296" N	2° 4' 19.517" E
A24	WTG	53° 50' 10.027" N	1° 48' 16.430" E	E10	WTG	53° 51' 51.400" N	2° 3' 36.484" E
A25	WTG	53° 50' 6.274" N	1° 47' 1.273" E	E13	WTG	53° 51' 52.670" N	1° 59' 32.740" E
A26	WTG	53° 50' 6.589" N	1° 45' 55.315" E	E16	WTG	53° 52' 4.770" N	1° 56' 50.156" E
A27	WTG	53° 50' 6.928" N	1° 44' 42.213" E	E18	WTG	53° 52' 10.657" N	1° 54' 14.317" E
A28	WTG	53° 50' 7.271" N	1° 43' 25.130" E	E20	WTG	53° 52' 11.164" N	1° 51' 44.332" E
A29	WTG	53° 50' 7.587" N	1° 42' 11.275" E	E21	WTG	53° 52' 10.815" N	1° 49' 42.004" E
A30	WTG	53° 50' 14.642" N	1° 40' 49.816" E	E22	WTG	53° 52' 17.258" N	1° 48' 31.781" E
A31	WTG	53° 50' 8.135" N	1° 39' 55.428" E	E23	WTG	53° 52' 11.044" N	1° 46' 57.697" E
A32	WTG	53° 50' 8.329" N	1° 39' 4.642" E	E24	WTG	53° 52' 19.198" N	1° 45' 28.085" E
B01	WTG	53° 50' 9.901" N	2° 13' 47.045" E	E25	WTG	53° 52' 23.825" N	1° 44' 2.344" E
B02	WTG	53° 50' 17.294" N	2° 12' 13.611" E	F01	WTG	53° 52' 48.086" N	2° 10' 54.639" E
B05	WTG	53° 50' 13.568" N	2° 8' 48.444" E	F03	WTG	53° 52' 43.967" N	2° 8' 33.310" E
B07	WTG	53° 50' 13.231" N	2° 6' 19.895" E	F07	WTG	53° 52' 42.594" N	2° 3' 36.484" E
B10	WTG	53° 50' 26.838" N	2° 3' 35.969" E	F10	WTG	53° 52' 33.673" N	2° 1' 17.023" E
B13	WTG	53° 50' 33.950" N	2° 0' 59.064" E	F13	WTG	53° 52' 32.023" N	1° 58' 49.544" E
B16	WTG	53° 50' 42.731" N	1° 58' 20.716" E	F16	WTG	53° 52' 45.823" N	1° 56' 5.028" E
B18	WTG	53° 50' 49.438" N	1° 55' 43.634" E	F18	WTG	53° 53' 9.705" N	1° 53' 9.308" E
B20	WTG	53° 50' 46.022" N	1° 53' 18.081" E	F20	WTG	53° 52' 53.727" N	1° 50' 57.418" E
B21	WTG	53° 50' 46.266" N	1° 51' 15.197" E	F21	WTG	53° 52' 57.834" N	1° 48' 50.122" E
B22	WTG	53° 50' 50.737" N	1° 50' 7.208" E	F23	WTG	53° 52' 51.913" N	1° 46' 12.540" E
B23	WTG	53° 50' 49.291" N	1° 48' 27.938" E	F25	WTG	53° 52' 57.661" N	1° 43' 24.901" E
B24	WTG	53° 50' 47.725" N	1° 47' 9.129" E	F27	WTG	53° 53' 10.480" N	1° 41' 22.750" E
B25	WTG	53° 50' 42.299" N	1° 45' 54.571" E	F28	WTG	53° 53' 6.724" N	1° 39' 35.969" E
B27	WTG	53° 51' 3.865" N	1° 43' 42.917" E	G01	WTG	53° 53' 18.707" N	2° 10' 21.214" E
B28	WTG	53° 50' 58.198" N	1° 41' 57.356" E	G02	WTG	53° 53' 29.078" N	2° 8' 44.887" E
B30	WTG	53° 50' 58.492" N	1° 40' 12.842" E	G03	WTG	53° 53' 22.930" N	2° 7' 50.725" E
C01	WTG	53° 50' 42.749" N	2° 13' 11.280" E	G05	WTG	53° 53' 8.418" N	2° 5' 37.418" E
C03	WTG	53° 50' 44.945" N	2° 10' 30.295" E	G07	WTG	53° 53' 17.692" N	2° 2' 58.029" E
C05	WTG	53° 50' 50.038" N	2° 8' 8.696" E	G10	WTG	53° 53' 15.940" N	2° 0' 30.655" E
C07	WTG	53° 50' 49.261" N	2° 5' 41.602" E	G13	WTG	53° 53' 11.371" N	1° 58' 6.326" E
C10	WTG	53° 51' 9.122" N	2° 2' 49.679" E	G16	WTG	53° 53' 26.870" N	1° 55' 19.875" E
C13	WTG	53° 51' 13.312" N	2° 0' 15.913" E	G20	WTG	53° 53' 36.285" N	1° 50' 10.477" E
C16	WTG	53° 51' 23.712" N	1° 57' 35.260" E	G21	WTG	53° 53' 32.086" N	1° 48' 12.302" E
C18	WTG	53° 51' 28.777" N	1° 55' 0.387" E	G22	WTG	53° 53' 37.322" N	1° 47' 3.356" E
C20	WTG	53° 51' 28.596" N	1° 52' 31.220" E	G23	WTG	53° 53' 32.777" N	1° 45' 27.359" E
C21	WTG	53° 51' 29.321" N	1° 50' 27.756" E	G24	WTG	53° 53' 43.034" N	1° 43' 56.495" E
C23	WTG	53° 51' 30.170" N	1° 47' 42.830" E	G25	WTG	53° 53' 56.193" N	1° 42' 20.081" E
C25	WTG	53° 51' 16.144" N	1° 45' 17.179" E	H01	WTG	53° 53' 58.413" N	2° 9' 37.848" E

H03	WTG	53° 54' 1.889° N	2° 7' 8.119° E
H05	WTG	53° 53' 49.595° N	2° 4' 52.339° E
H07	WTG	53° 53' 58.250° N	2° 2' 13.562° E
H10	WTG	53° 53' 58.203° N	1° 59' 44.261° E
H13	WTG	53° 53' 50.715° N	1° 57' 23.085° E
H16	WTG	53° 54' 7.913° N	1° 54' 34.697° E
H18	WTG	53° 53' 54.332° N	1° 52' 18.349° E
H20	WTG	53° 54' 32.240° N	1° 49' 8.214° E
H21	WTG	53° 54' 15.717° N	1° 47' 23.896° E
H23	WTG	53° 54' 13.636° N	1° 44' 42.152° E
H25	WTG	53° 54' 27.208° N	1° 41' 45.708° E
H27	WTG	53° 54' 33.076° N	1° 39' 51.158° E
J01	WTG	53° 54' 38.756° N	2° 8' 53.756° E
J03	WTG	53° 54' 40.844° N	2° 6' 25.490° E
J05	WTG	53° 54' 25.489° N	2° 4' 13.018° E
J07	WTG	53° 54' 32.071° N	2° 1' 36.460° E
J10	WTG	53° 54' 40.460° N	1° 58' 57.842° E
J13	WTG	53° 54' 30.055° N	1° 56' 39.821° E
J16	WTG	53° 54' 48.951° N	1° 53' 49.494° E
J18	WTG	53° 54' 36.702° N	1° 51' 33.414° E
J20	WTG	53° 55' 7.841° N	1° 48' 29.133° E
J21	WTG	53° 54' 57.164° N	1° 46' 38.273° E
J22	WTG	53° 55' 1.037° N	1° 45' 30.774° E
J23	WTG	53° 54' 54.490° N	1° 43' 56.922° E
J24	WTG	53° 54' 59.363° N	1° 42' 32.793° E
J25	WTG	53° 54' 58.220° N	1° 41' 11.321° E
K01	WTG	53° 55' 20.531° N	2° 8' 8.070° E
K02	WTG	53° 55' 9.158° N	2° 6' 54.890° E
K03	WTG	53° 55' 19.794° N	2° 5' 42.840° E
K05	WTG	53° 55' 7.572° N	2° 3' 26.888° E
K07	WTG	53° 55' 8.764° N	2° 0' 56.185° E
K10	WTG	53° 55' 22.065° N	1° 58' 12.108° E
K13	WTG	53° 55' 8.466° N	1° 55' 57.552° E
K16	WTG	53° 55' 29.495° N	1° 53' 4.806° E
K18	WTG	53° 55' 17.753° N	1° 50' 48.118° E
K20	WTG	53° 55' 47.974° N	1° 47' 39.416° E
K21	WTG	53° 55' 39.082° N	1° 45' 51.896° E
K23	WTG	53° 55' 35.340° N	1° 43' 11.666° E
K25	WTG	53° 55' 34.661° N	1° 40' 30.893° E
L01	WTG	53° 56' 3.134° N	2° 7' 21.448° E
L03	WTG	53° 55' 58.740° N	2° 5' 0.167° E
L05	WTG	53° 55' 47.400° N	2° 2' 43.201° E
L18	WTG	53° 56' 2.272° N	1° 49' 58.961° E
L20	WTG	53° 56' 26.853° N	1° 46' 56.064° E
L21	WTG	53° 56' 21.088° N	1° 45' 5.390° E
L22	WTG	53° 56' 31.415° N	1° 43' 50.684° E
L23	WTG	53° 56' 14.047° N	1° 42' 28.756° E
L24	WTG	53° 56' 3.076° N	1° 41' 20.144° E
M02	WTG	53° 56' 28.418° N	2° 5' 28.078° E
M03	WTG	53° 56' 37.189° N	2° 4' 18.012° E
M05	WTG	53° 56' 19.915° N	2° 2' 7.514° E