



Notice to Mariners – Hornsea Project Two

Notice of Foundation Installation Activities – Vessel Details Update 02/02/2021

1. INTRODUCTION

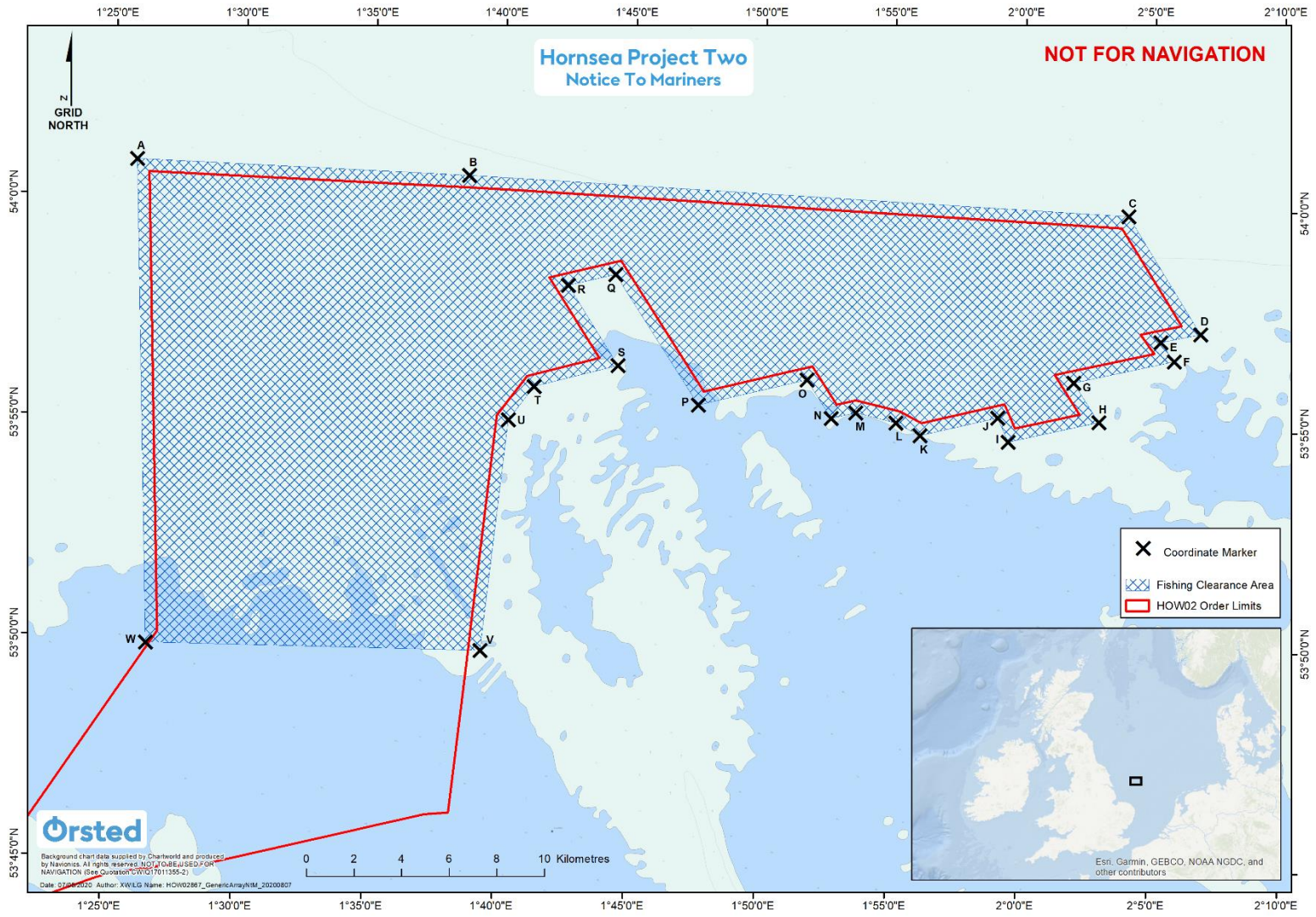
Mariners are advised that Ørsted have completed scour protection installation at monopile foundation locations and are continuing monopile foundation installation within the Hornsea Project Two Offshore Wind Farm array area, shown in Figure 1, with additional vessel details provided in Section 6. Safety Zones have been implemented around the wind farm structures during construction, details of which can be found in Section 3.1 of this notice.

2. AREA OF OPERATIONS

Activities are being carried out within the Hornsea Project Two Offshore Wind Farm array area as shown in Figure 1. Mariners are advised that MaxSea and Olex plotter files of the proposed works area can be provided by the Project's Commercial Fisheries Advisors at Brown and May Marine Limited and the Project's onshore fisheries liaison. Contact details are provided in Section 5 of this Notice.

Note that these works will be carried out alongside other ongoing construction activities for Hornsea Project Two.

Figure 1. Proposed Construction Area



3. PROPOSED ACTIVITIES

3.1 Foundation Installation

Please be advised that DEME Offshore Group are carrying out monopile foundation installation using the Innovation, with the Pacific Orca due to enter the array area on or around 15th February 2021. Foundation installation works will be continual and intermittent throughout this period through to Q4 2021. The works will be undertaken by a number of vessels at different times according to the Project schedule. Details of the vessels are provided in Section 6. When the works are complete, this Notice will be updated and re-issued.

Rolling 500m Safety Zones (SZs) will be in place around the OSS and RCS when a construction vessel *is* present. When a construction vessel *is not* present, 50m SZs are in place around any wind farm structure that is either partially constructed but not yet commissioned.

Note that the vessels will have limited manoeuvrability and it is requested that all vessels operating near the vessels maintain a safe distance (at least 500m) and pass all vessels at minimum speed.

3.2 Safety

It is requested that anybody having knowledge of any potential objects submerged or moored on the seabed within the project area that could be damaged or form a hazard to the vessel and its equipment advises the Project's Fishing Industry Liaison of their position and nature. The Project has also requested the clearance of static fishing gear within the boundary shown in Figure 1 and coordinates provided in Section 7 of this Notice. When works commence a listening watch will be maintained on VHF Channel 12 and 16 when within the appropriate port authority area and will actively transmit an AIS signal.

4. IMMEDIATE CONTACTS

The contents of this notice are based upon our current understanding of Project Two requirements. A further notice will be issued once activities are completed.

Enquiries regarding the contents of this Notice to Mariners or any other matters should be directed to:

Project Manager (Ørsted) (Office hours only)	Thomas Rosier	
	Tel: +44 7825 905 943	E-mail: thros@orsted.co.uk
Project Manager (DEME Group) (Office hours only)	Glenn Carton	
	Tel: +32 494 800 845	E-mail: Carton.Glenn@deme-group.com

5. FISHERIES LIAISON

Onshore Fisheries Liaison is provided by Nick Garside and Sophie Farenden who can be contacted on:

E-mail: nick.garside@live.co.uk	Mob: +44 (0) 7538 827013
Email: sophie.farenden@brownmay.com	Mob: +44 (0)7525 128344


An Offshore Fisheries Liaison Officer is onboard the Emswind Guard Vessel and Defiant Guard Vessel, contactable on VHF channel 16, if required.

In the event the Offshore or Onshore Fisheries Liaison is not contactable please direct fisheries enquiries related to the works to the Ørsted Company Fisheries Liaison Officer:

Company Fisheries Liaison Officer – Courtney French	Tel: +44 (0)7796 447372	E-mail: CONFR@orsted.co.uk
--	-------------------------	--

6. VESSELS

Operations will be conducted by the vessels as provided below. Additional vessels may mobilise to site as required. Contact can be made directly with the vessels, where necessary, using the contact details listed below. This Notice will be updated with further contact details once confirmed. Client and contractor contact details are provided in Section 4 and 5 of this NtM.

Vessel Details – Pacific Orca	
 <p>© David Meek MarineTraffic.com</p>	
Vessel Type / Function	Foundation Installation Jackup Vessel
Vessel telephone	Phone: +45 5167 1381 V-sat: +45 89 88 60 67
Vessel email	wind.orca@cadeler.com
Call Sign	5BRE3
MMSI	210548000

Vessel Details – Innovation	
 <p>© RENE HENRI ROSSEEL MarineTraffic.com</p>	
Vessel Type / Function	Foundation Installation Jackup Vessel
Vessel telephone	V-sat: +49 421 944 0241 760 (Bridge) +49 42 194 4024 1760 (Captain) Mobile: +49 16 09 39 63 436 (Bridge)
Vessel email	Innovation@ships.deme-group.com Captain.Innovation@ships.deme-group.com
Call Sign	DHUR2

MMSI	218781000
------	-----------

7. COORDINATES

Coordinate Marker	Longitude (WGS84)	Latitude (WGS84)
A	1° 25' 51.462" E	54° 0' 48.311" N
B	1° 38' 38.382" E	54° 0' 34.663" N
C	2° 4' 1.621" E	53° 59' 52.681" N
D	2° 6' 50.713" E	53° 57' 13.578" N
E	2° 5' 19.157" E	53° 57' 1.913" N
F	2° 5' 50.608" E	53° 56' 36.173" N
G	2° 1' 59.723" E	53° 56' 5.632" N
H	2° 2' 58.547" E	53° 55' 12.083" N
I	1° 59' 29.954" E	53° 54' 43.789" N
J	1° 59' 5.229" E	53° 55' 16.550" N
K	1° 56' 7.241" E	53° 54' 51.044" N
L	1° 55' 10.769" E	53° 55' 8.053" N
M	1° 53' 38.216" E	53° 55' 20.976" N
N	1° 52' 41.920" E	53° 55' 12.914" N
O	1° 51' 45.091" E	53° 56' 4.428" N
P	1° 47' 35.573" E	53° 55' 28.005" N
Q	1° 44' 19.681" E	53° 58' 23.722" N
R	1° 42' 30.720" E	53° 58' 7.653" N
S	1° 44' 29.061" E	53° 56' 19.862" N
T	1° 41' 16.484" E	53° 55' 49.096" N
U	1° 40' 18.524" E	53° 55' 3.210" N
V	1° 39' 23.089" E	53° 49' 48.866" N
W	1° 26' 33.640" E	53° 49' 51.105" N