

Ørsted - East Coast Operational Assets

Notice to Mariners

Period of Notice: January 2021

Version: Issue 3

Table of Contents

1	Introduction	3
1.1	Subsea Cables.....	3
1.2	Wind Farm Positional Data	3
2	Key Contacts.....	4
3	Notice to Mariners Summary:.....	5
4	Race Bank – Notice to Mariners	6
4.1	Lighting and Marking Status.....	6
5	Westermose Rough – Notice to Mariners	6
5.1	Lighting and Marking Status.....	6
6	Lincs – Notice to Mariners.....	6
6.1	Lighting and Marking Status.....	6
7	Gunfleet Sands – Notice to Mariners	7
7.1	Lighting and Marking Status.....	7
7.1.1	HSS Bearing Replacement	7
7.1.2	Cable exposure	8
7.1.3	Debris Clearance Survey	9
8	Hornsea One – Notice to Mariners.....	10
8.1	Lighting and Marking Status.....	10
8.2	Other Operations.....	10
8.2.1	Array cable remedial work.....	10

1 Introduction

Ørsted is an offshore wind farm owner and operator with ten operational wind farms in UK waters. Of these ten, the following offshore wind farms are located off the East Coast of England:

- Gunfleet Sands
- Westernmost Rough
- Race Bank
- Lincs
- Hornsea One

The purpose of this monthly Notice to Mariners (NtM) is to ensure that mariners are aware of any non-routine operations across the East Coast assets that could pose a risk to other sea users. Safety is paramount to Ørsted and this notice should assist in ensuring that both mariners and the Ørsted operational team can operate safely offshore. This NtM will provide:

- A regular, clear and consistent overview of non-routine operations
- Updates relating to lighting and marking
- Key contact details
- Access to detailed site information and figures
- Clarity on when Safety Zones and recommended safe separation distances are in force or requested



This Notice to Mariners will not provide:

- Information relating to routine maintenance carried out by Crew Transfer Vessels (CTV) or Service Operation Vessels (SOV).
- Any information relating to export cables
- Any information relating to offshore wind farms currently in development, construction or not operated by Ørsted

Subsea Cables

Subsea cables are installed across each offshore wind farm and are marked on the KIS ORCA charts referenced in Section 1.2. Please note the following advice from NP 100 The Mariners Handbook "Every care should be taken to avoid anchoring, trawling, fishing, dredging, drilling, or carrying out any other activity in the vicinity of cables which might damage them." This warning is repeated on all admiralty charts.

Wind Farm Positional Data

KIS ORCA Awareness Charts (including the layout and coordinates) and Fishing Plotter Files of the offshore assets referenced in this NtM can be found via the KIS ORCA website: <http://www.kis->

orca.eu/downloads#.XWUTQUxFwjZ. Should mariners require further information or any data in a format that can be used in a plotter or other device, please contact the Company Fisheries Liaison Officer, listed in Section 2 below.

2 Key Contacts

For further information on any of the activities listed within this notice, please use the contact details listed below.

Site	Ørsted Mailbox/ Offshore Coordination	Fisheries Industry Representative
Race Bank	Phone: 07826 943808 Email: rowoffshorec@orsted.co.uk	Ady Woods Phone: 07468 898948 Email: firwoods@hotmail.com
Westermost Rough	Phone: 07867 674941 Email: wmroffshorec@orsted.co.uk	Guy Pasco Phone: 07880 362082 Email: guy@seascopefisheries.co.uk
Lincs	Phone: 07766443319 Email: lincsoffshorec@orsted.co.uk	Ady Woods Phone: 07468 898948 Email: firwoods@hotmail.com
Gunfleet Sands		Merlin Jackson Phone: 07989 520484 Email: merlinjackson@btinternet.com
Hornsea One	Phone: 07775005465 Email: HOWoffshoreC@orsted.co.uk	Nick Garside Phone: 07538 827013 Email: nick.garside@live.co.uk

Company Fisheries Liaison Officer

The Ørsted Company Fisheries Liaison Officer can be contacted using the details below:

Courtney French
Email: CONFR@Orsted.co.uk

3 Notice to Mariners Summary:

Site	Lighting and Marking Status	Survey	Jack-Up Vessel	Other Works
Race Bank	OK	None	None	None
Westermost Rough	OK	None	None	None
Lincs	OK	None	None	None
Gunfleet Sands	OK	Yes	None	HSS bearing.
Hornsea One	H27, A32, C30, A26 fog horns inoperative. A32, C30, A25 & A28 marine lanterns inoperative.	None	None	Array cable campaign*°.

* Formal 500m safety zone in place

° Licensable activity

** 500m safety distance requested

*** 200m safety distance requested

4 Race Bank – Notice to Mariners

4.1 Lighting and Marking Status

The lighting and/ or navigational warning systems are currently operational. No planned outages.

5 Westermost Rough – Notice to Mariners

5.1 Lighting and Marking Status

The lighting and/ or navigational warning systems are currently operational. No planned outages.

6 Lincs – Notice to Mariners

6.1 Lighting and Marking Status

The lighting and/ or navigational warning systems are currently operational. No planned outages.

7 Gunfleet Sands – Notice to Mariners

7.1 Lighting and Marking Status

The lighting and/ or navigational warning systems are currently operational. No planned outages.

7.1.1 HSS Bearing Replacement

We have an ongoing campaign replacing the HSS bearing on several locations shown in table 1. The work is anticipated to last until mid-February.


General Information		Vessel Picture
Name	Ava Sofie	
Flag	UK	
Year Built	2013	
IMO Number	N/A	
Call Sign	2GYH5	
Vessel Contact Details		
Bridge	07375548063	
Party Chief	07375548063	
Email	avasofie@tidal-transit.com	

Table 1

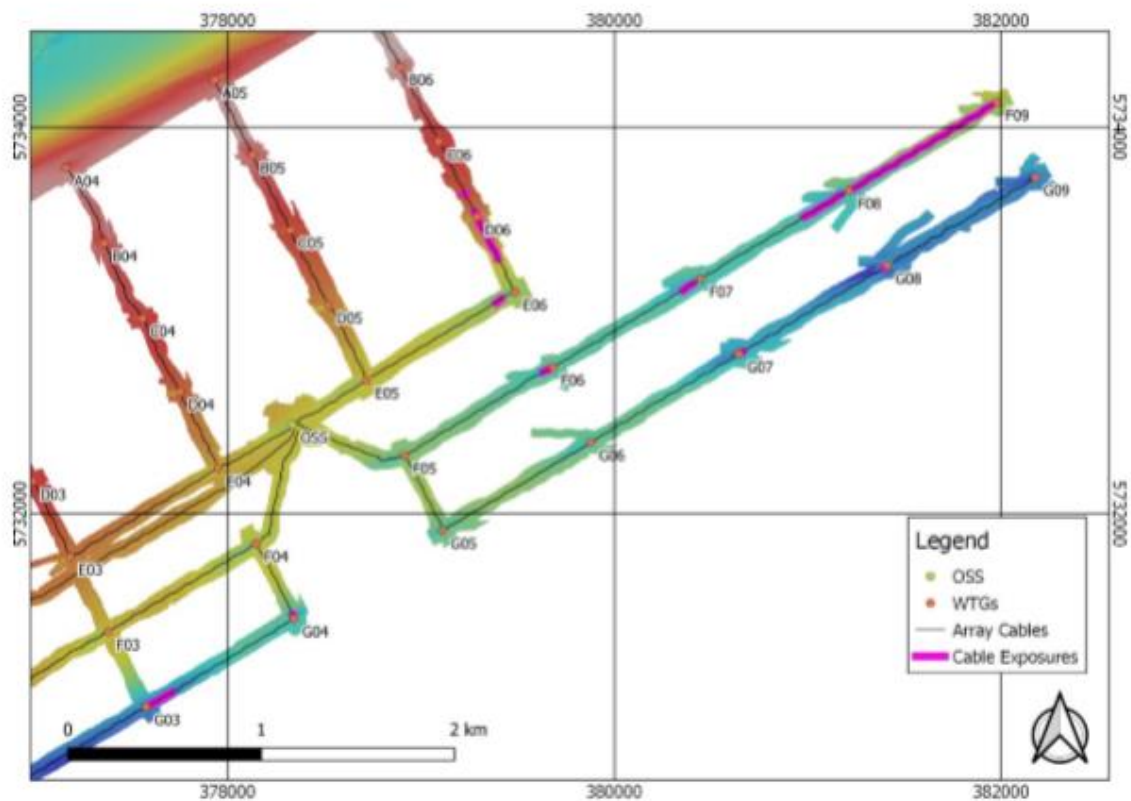
WTG	Latitude	Longitude
C02	51° 43.565'N	01° 12.299'E
B01	51° 43.517'N	01° 11.464'E
B02	51° 43.773'N	01° 12.120'E
D01	51° 43.103'N	01° 11.822'E
B06	51° 44.797'N	01° 14.744'E
D03	51° 43.615'N	01° 13.134'E
A01	51° 43.724'N	01° 11.265'E
F01	51° 42.689'N	01° 12.180'E
B04	51° 44.285'N	01° 13.432'E

7.1.2 Cable exposure

There are subsea cables currently exposed as shown on the below chart and coordinates.

Array cable	Nearest WTG	Distance from WTG to start exposure [m]	Exposure length [m]	Coordinates start exposure		Coordinates end exposure	
				X	Y	X	Y
F06-F07	F07	53.9	73.9	380400.9	5733188.0	380341.2	5733147.0
F07-F08	F08	52.4	216.1	381166.3	5733649.0	380982.7	5733538.0
F08-F09	F08	28.1	827.9	381238.4	5733685.0	381942.3	5734108.0
G03-G04	G03	19.9	129.8	377595.9	5731011.0	377708.3	5731074.0
G07-G08	G07	15.4	5.8	380657.0	5732835.0	380662.0	5732838.0
G07-G08	G08	6.5	11.0	381404.9	5733280.0	381395.3	5733275.0

Table 5-1; Array cable exposures detected in GFS0102



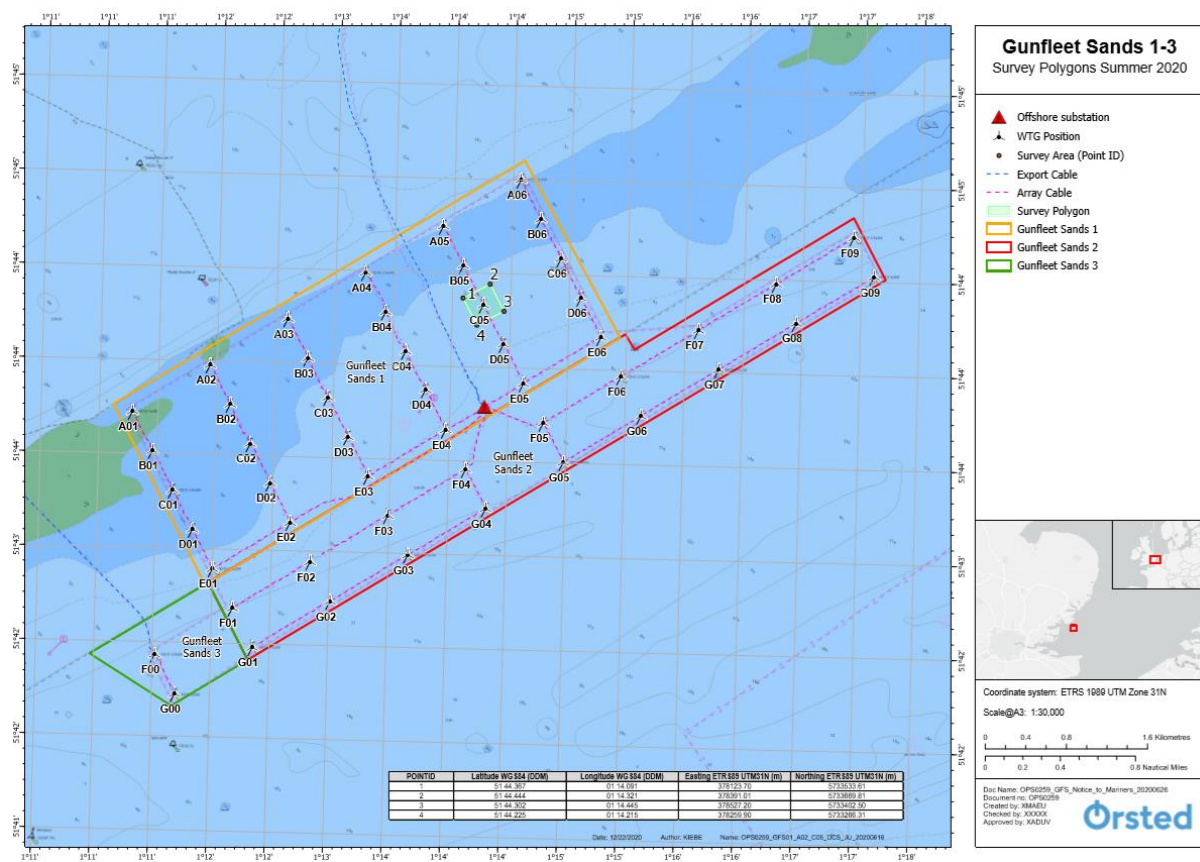
7.1.3 Debris Clearance Survey

During early January we will conduct a debris clearance survey, shown on figure 1 below.

Vessel details

General Information		
Name	Spectrum 1	
Flag	UK	
Year Built	2009	
MMSI Number	235075021	
Call Sign	2CQX3	
Vessel Contact Details		
Bridge	07538565561	
Party Chief	Luca Pitt	
Email	spectrum1@spectrum-offshore.com	

Figure 1



POINTID	Latitude WGS84 (DDM)	Longitude WGS84 (DDM)	Easting ETRS89 UTM31N (m)	Northing ETRS89 UTM31N (m)
1	51 44.367	01 14.091	378123.70	5733533.61
2	51 44.444	01 14.321	378391.01	5733669.81
3	51 44.302	01 14.445	378527.20	5733402.50
4	51 44.225	01 14.215	378259.90	5733266.31

8 Hornsea One – Notice to Mariners

8.1 Lighting and Marking Status

The fog signals on H27, A32, A26, C30 and the marine lanterns on A32, C30, A25 & A28 are inoperative.

8.2 Other Operations

8.2.1 Array cable remedial work

Remedial work will take place on HOW01 in the western section shown on figure 4 below. Work is due to commence on 9th November 2020 until February 2021.

There will also be a re-burial campaign in the Eastern section shown in figure 5 and table 1.

Mariners must observe an approved safety zone of 500m whenever The Livingstone, Havila Phoenix, Viking Neptune & Wind Innovation are next to an OSS or WTG. A minimum separation distance of 500m is also requested when the vessel is observed manoeuvring into position.

Figure 4

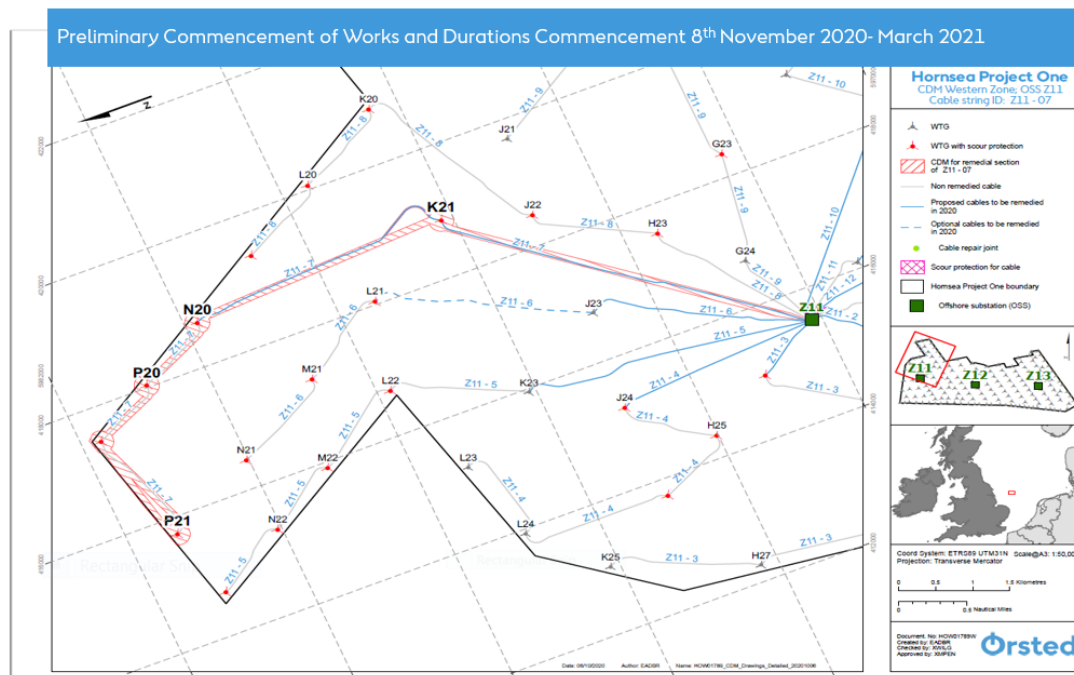


Figure 5

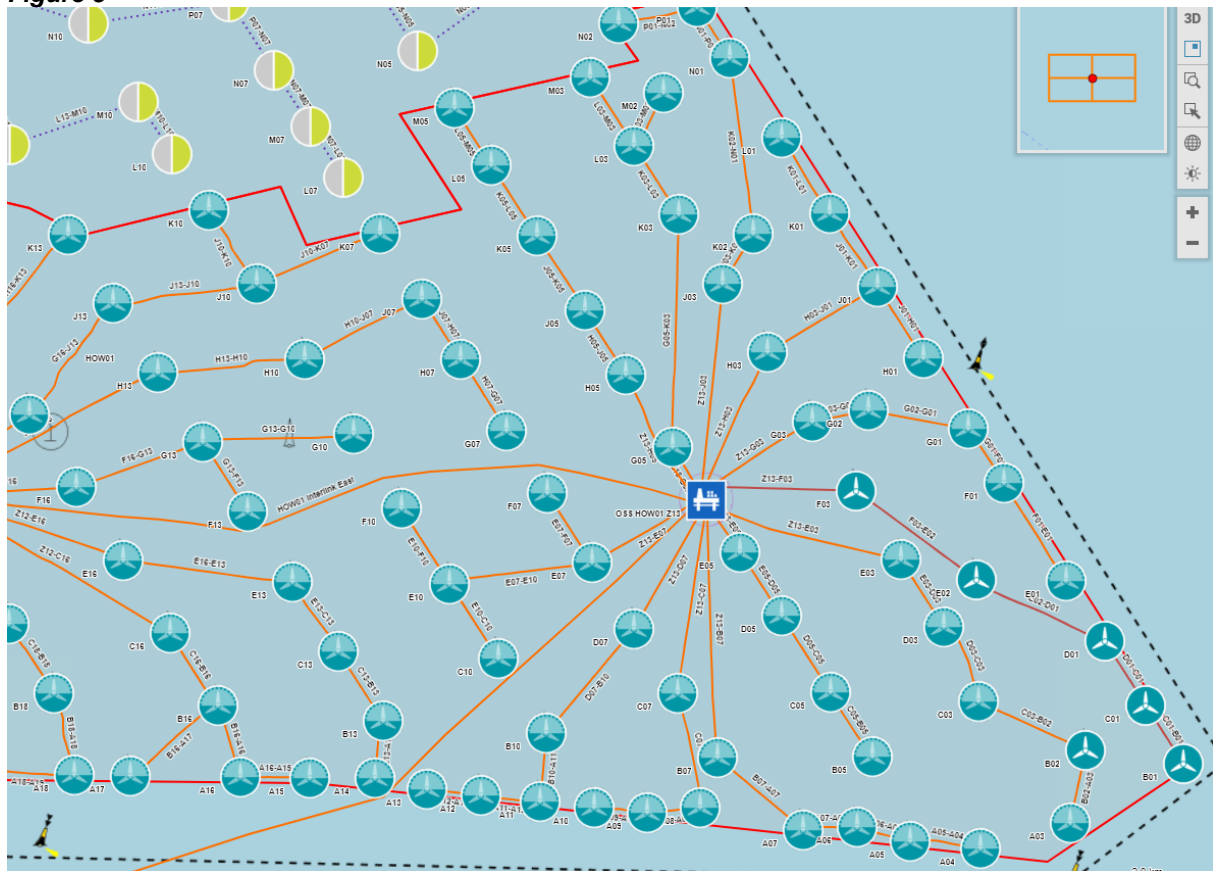





Table 1

String ID	Burial Vessel	String ID	Burial Vessel
	Havila Phoenix		Havila Phoenix
Z13 – C07	01/12/20	B07 – A07	07/12/20
Z13 – H05	01/12/20	Z13 – B07	08/12/20
K03 – L03	02/12/20	D07 – B10	09/12/20
G05 – K03	02/12/20	Z13 – D07	10/12/20
Z13 – J03	04/12/20	Z13 – E03	01/12/20
P01 – N02	04/12/20	Z13 - F03	01/12/20
Z13 – H03	05/12/20	F03 - E02	01/12/20
D03 – C03	06/12/20		

Vessel Information

General Information		Vessel Picture
Name	Havila Phoenix	
Flag	Bahamas	
Year	2009	
MMSI	311000229	
Call	C6BD2	
Vessel Contact Details		
Bridge	TBC	
Party Chief	TBC	
Email	bridge.phoenix@havalaship.com	

General Information		Vessel Picture
Name	Living Stone	
Flag	NL	
Year Built	2018	
MMSI	244010952	
Call Sign	9776925	
Vessel Contact Details		
Bridge	+4942151721919	
Party Chief	TBC	
Email		

General Information		Vessel Picture
Name	Wind Innovation	
Flag	United Kingdom	
Year	1999	
MMSI	235113838	
Call Sign	2IYP3	
Vessel Contact Details		
Bridge	+45 69669981	
Party Chief	TBC	
Email	Bridge.wi@c-bed.com	

General Information		Vessel Picture
Name	Viking Neptun	
Flag	Norway	
Year Built	2015	
MMSI Number	258789000	
Call Sign	LAYH7	
Vessel Contact Details		
Bridge	TBC	
Party Chief	TBC	
Email	bridge.viking-neptun@eidesvik.no	

Figure 5 HOW01 coordinates

ID	Structure	Latitude	Longitude
A03	WTG	53° 49' 36.362" N	2° 11' 58.401" E
A04	WTG	53° 49' 21.635" N	2° 10' 32.853" E
A05	WTG	53° 49' 25.952" N	2° 9' 25.058" E
A06	WTG	53° 49' 33.690" N	2° 8' 34.653" E
A07	WTG	53° 49' 32.464" N	2° 7' 42.469" E
A08	WTG	53° 49' 44.789" N	2° 6' 3.244" E
A09	WTG	53° 49' 41.917" N	2° 5' 12.846" E
A10	WTG	53° 49' 45.144" N	2° 4' 21.583" E
A11	WTG	53° 49' 48.364" N	2° 3' 30.317" E
A12	WTG	53° 49' 51.969" N	2° 2' 32.812" E
A13	WTG	53° 49' 55.157" N	2° 1' 41.865" E
A14	WTG	53° 50' 1.402" N	2° 0' 51.654" E
A15	WTG	53° 50' 1.857" N	1° 59' 49.102" E
A16	WTG	53° 50' 2.288" N	1° 58' 42.072" E
A17	WTG	53° 50' 2.970" N	1° 56' 57.238" E
A18	WTG	53° 50' 3.298" N	1° 56' 3.042" E
A19	WTG	53° 50' 5.340" N	1° 54' 34.121" E
A20	WTG	53° 50' 4.153" N	1° 53' 39.481" E
A21	WTG	53° 50' 4.804" N	1° 52' 25.513" E
A22	WTG	53° 50' 5.059" N	1° 50' 57.533" E
A23	WTG	53° 50' 11.478" N	1° 49' 42.519" E
A24	WTG	53° 50' 10.027" N	1° 48' 16.430" E
A25	WTG	53° 50' 6.274" N	1° 47' 1.273" E
A26	WTG	53° 50' 6.589" N	1° 45' 55.315" E
A27	WTG	53° 50' 6.928" N	1° 44' 42.213" E
A28	WTG	53° 50' 7.271" N	1° 43' 25.130" E
A29	WTG	53° 50' 7.587" N	1° 42' 11.275" E
A30	WTG	53° 50' 14.642" N	1° 40' 49.816" E
A31	WTG	53° 50' 8.135" N	1° 39' 55.428" E
A32	WTG	53° 50' 8.329" N	1° 39' 4.642" E
B01	WTG	53° 50' 9.901" N	2° 13' 47.045" E
B02	WTG	53° 50' 17.294" N	2° 12' 13.611" E
B05	WTG	53° 50' 13.568" N	2° 8' 48.444" E
B07	WTG	53° 50' 13.231" N	2° 6' 19.895" E
B10	WTG	53° 50' 26.838" N	2° 3' 35.969" E
B13	WTG	53° 50' 33.950" N	2° 0' 59.064" E
B16	WTG	53° 50' 42.731" N	1° 58' 20.716" E
B18	WTG	53° 50' 49.438" N	1° 55' 43.634" E
B20	WTG	53° 50' 46.022" N	1° 53' 18.081" E
B21	WTG	53° 50' 46.266" N	1° 51' 15.197" E
B22	WTG	53° 50' 50.737" N	1° 50' 7.208" E
B23	WTG	53° 50' 49.291" N	1° 48' 27.938" E
B24	WTG	53° 50' 47.725" N	1° 47' 9.129" E
B25	WTG	53° 50' 42.299" N	1° 45' 54.571" E
B27	WTG	53° 51' 3.865" N	1° 43' 42.917" E
B28	WTG	53° 50' 58.198" N	1° 41' 57.356" E
B30	WTG	53° 50' 58.492" N	1° 40' 12.842" E
C01	WTG	53° 50' 42.749" N	2° 13' 11.280" E
C03	WTG	53° 50' 44.945" N	2° 10' 30.295" E
C05	WTG	53° 50' 50.038" N	2° 8' 8.696" E
C07	WTG	53° 50' 49.261" N	2° 5' 41.602" E
C10	WTG	53° 51' 9.122" N	2° 2' 49.679" E
C13	WTG	53° 51' 13.312" N	2° 0' 15.913" E
C16	WTG	53° 51' 23.712" N	1° 57' 35.260" E
C18	WTG	53° 51' 28.777" N	1° 55' 0.387" E
C20	WTG	53° 51' 28.596" N	1° 52' 31.220" E
C21	WTG	53° 51' 29.321" N	1° 50' 27.756" E
C23	WTG	53° 51' 30.170" N	1° 47' 42.830" E
C25	WTG	53° 51' 16.144" N	1° 45' 17.179" E
C30	WTG	53° 51' 44.759" N	1° 39' 21.566" E
D01	WTG	53° 51' 19.036" N	2° 12' 31.748" E
D03	WTG	53° 51' 27.125" N	2° 9' 57.215" E
D05	WTG	53° 51' 33.204" N	2° 7' 21.543" E
D07	WTG	53° 51' 26.092" N	2° 5' 0.231" E
D25	WTG	53° 51' 49.986" N	1° 44' 39.770" E
D27	WTG	53° 52' 5.499" N	1° 42' 34.723" E
D28	WTG	53° 51' 59.883" N	1° 40' 49.047" E
E01	WTG	53° 51' 53.062" N	2° 11' 54.701" E
E02	WTG	53° 51' 53.838" N	2° 10' 28.350" E
E03	WTG	53° 52' 5.000" N	2° 9' 15.872" E
E05	WTG	53° 52' 9.257" N	2° 6' 42.135" E
E07	WTG	53° 52' 3.296" N	2° 4' 19.517" E
E10	WTG	53° 51' 51.400" N	2° 2' 3.364" E
E13	WTG	53° 51' 52.670" N	1° 59' 32.740" E
E16	WTG	53° 52' 4.770" N	1° 56' 50.156" E
E18	WTG	53° 52' 10.657" N	1° 54' 14.317" E
E20	WTG	53° 52' 11.164" N	1° 51' 44.332" E
E21	WTG	53° 52' 10.815" N	1° 49' 42.004" E
E22	WTG	53° 52' 17.258" N	1° 48' 31.781" E
E23	WTG	53° 52' 11.044" N	1° 46' 57.697" E
E24	WTG	53° 52' 19.198" N	1° 45' 28.085" E
E25	WTG	53° 52' 23.825" N	1° 44' 2.344" E
F01	WTG	53° 52' 48.086" N	2° 10' 54.639" E
F03	WTG	53° 52' 43.967" N	2° 8' 33.310" E
F07	WTG	53° 52' 42.594" N	2° 3' 36.484" E
F10	WTG	53° 52' 33.673" N	2° 1' 17.023" E
F13	WTG	53° 52' 32.023" N	1° 58' 49.544" E
F16	WTG	53° 52' 45.823" N	1° 56' 5.028" E
F18	WTG	53° 53' 9.705" N	1° 53' 9.308" E
F20	WTG	53° 52' 53.727" N	1° 50' 57.418" E
F21	WTG	53° 52' 57.834" N	1° 48' 50.122" E
F23	WTG	53° 52' 51.913" N	1° 46' 12.540" E
F25	WTG	53° 52' 57.661" N	1° 43' 24.901" E
F27	WTG	53° 53' 10.480" N	1° 41' 22.750" E
F28	WTG	53° 53' 6.724" N	1° 39' 35.969" E
G01	WTG	53° 53' 18.707" N	2° 10' 21.214" E
G02	WTG	53° 53' 29.078" N	2° 8' 44.887" E
G03	WTG	53° 53' 22.930" N	2° 7' 50.725" E
G05	WTG	53° 53' 8.418" N	2° 5' 37.418" E
G07	WTG	53° 53' 17.692" N	2° 2' 58.029" E
G10	WTG	53° 53' 15.940" N	2° 0' 30.655" E
G13	WTG	53° 53' 11.371" N	1° 58' 6.326" E
G16	WTG	53° 53' 26.870" N	1° 55' 19.875" E
G20	WTG	53° 53' 36.285" N	1° 50' 10.477" E
G21	WTG	53° 53' 32.086" N	1° 48' 12.302" E
G22	WTG	53° 53' 37.322" N	1° 47' 3.356" E
G23	WTG	53° 53' 32.777" N	1° 45' 27.359" E
G24	WTG	53° 53' 43.034" N	1° 43' 56.495" E
G25	WTG	53° 53' 56.193" N	1° 42' 20.081" E
H01	WTG	53° 53' 58.413" N	2° 9' 37.848" E

H03	WTG	53° 54' 1.889° N	2° 7' 8.119° E
H05	WTG	53° 53' 49.595° N	2° 4' 52.339° E
H07	WTG	53° 53' 58.250° N	2° 2' 13.562° E
H10	WTG	53° 53' 58.203° N	1° 59' 44.261° E
H13	WTG	53° 53' 50.715° N	1° 57' 23.085° E
H16	WTG	53° 54' 7.913° N	1° 54' 34.697° E
H18	WTG	53° 53' 54.332° N	1° 52' 18.349° E
H20	WTG	53° 54' 32.240° N	1° 49' 8.214° E
H21	WTG	53° 54' 15.717° N	1° 47' 23.896° E
H23	WTG	53° 54' 13.636° N	1° 44' 42.152° E
H25	WTG	53° 54' 27.208° N	1° 41' 45.708° E
H27	WTG	53° 54' 33.076° N	1° 39' 51.158° E
J01	WTG	53° 54' 38.756° N	2° 8' 53.756° E
J03	WTG	53° 54' 40.844° N	2° 6' 25.490° E
J05	WTG	53° 54' 25.489° N	2° 4' 13.018° E
J07	WTG	53° 54' 32.071° N	2° 1' 36.460° E
J10	WTG	53° 54' 40.460° N	1° 58' 57.842° E
J13	WTG	53° 54' 30.055° N	1° 56' 39.821° E
J16	WTG	53° 54' 48.951° N	1° 53' 49.494° E
J18	WTG	53° 54' 36.702° N	1° 51' 33.414° E
J20	WTG	53° 55' 7.841° N	1° 48' 29.133° E
J21	WTG	53° 54' 57.164° N	1° 46' 38.273° E
J22	WTG	53° 55' 1.037° N	1° 45' 30.774° E
J23	WTG	53° 54' 54.490° N	1° 43' 56.922° E
J24	WTG	53° 54' 59.363° N	1° 42' 32.793° E
J25	WTG	53° 54' 58.220° N	1° 41' 11.321° E
K01	WTG	53° 55' 20.531° N	2° 8' 8.070° E
K02	WTG	53° 55' 9.158° N	2° 6' 54.890° E
K03	WTG	53° 55' 19.794° N	2° 5' 42.840° E
K05	WTG	53° 55' 7.572° N	2° 3' 26.888° E
K07	WTG	53° 55' 8.764° N	2° 0' 56.185° E
K10	WTG	53° 55' 22.065° N	1° 58' 12.108° E
K13	WTG	53° 55' 8.466° N	1° 55' 57.552° E
K16	WTG	53° 55' 29.495° N	1° 53' 4.806° E
K18	WTG	53° 55' 17.753° N	1° 50' 48.118° E
K20	WTG	53° 55' 47.974° N	1° 47' 39.416° E
K21	WTG	53° 55' 39.082° N	1° 45' 51.896° E
K23	WTG	53° 55' 35.340° N	1° 43' 11.666° E
K25	WTG	53° 55' 34.661° N	1° 40' 30.893° E
L01	WTG	53° 56' 3.134° N	2° 7' 21.448° E
L03	WTG	53° 55' 58.740° N	2° 5' 0.167° E
L05	WTG	53° 55' 47.400° N	2° 2' 43.201° E
L18	WTG	53° 56' 2.272° N	1° 49' 58.961° E
L20	WTG	53° 56' 26.853° N	1° 46' 56.064° E
L21	WTG	53° 56' 21.088° N	1° 45' 5.390° E
L22	WTG	53° 56' 31.415° N	1° 43' 50.684° E
L23	WTG	53° 56' 14.047° N	1° 42' 28.756° E
L24	WTG	53° 56' 3.076° N	1° 41' 20.144° E
M02	WTG	53° 56' 28.418° N	2° 5' 28.078° E
M03	WTG	53° 56' 37.189° N	2° 4' 18.012° E
M05	WTG	53° 56' 19.915° N	2° 2' 7.514° E
M20	WTG	53° 57' 2.945° N	1° 46' 15.897° E
M21	WTG	53° 57' 1.186° N	1° 44' 20.968° E
M22	WTG	53° 57' 11.249° N	1° 43' 6.483° E
N01	WTG	53° 56' 48.110° N	2° 6' 32.147° E
N02	WTG	53° 57' 7.493° N	2° 4' 45.238° E
N20	WTG	53° 57' 37.337° N	1° 45' 37.518° E
N21	WTG	53° 57' 42.938° N	1° 43' 34.681° E
N22	WTG	53° 57' 43.069° N	1° 42' 31.534° E
P01	WTG	53° 57' 16.754° N	2° 6' 0.804° E
P20	WTG	53° 58' 9.550° N	1° 45' 1.601° E
P21	WTG	53° 58' 24.599° N	1° 42' 55.249° E
P22	WTG	53° 58' 15.790° N	1° 41' 55.576° E
Q20	WTG	53° 58' 38.484° N	1° 44' 29.435° E
Z11	OSS	1° 42' 51.851° E	53° 53' 26.979° N
Z12	OSS	1° 53' 42.938° E	53° 52' 40.210° N
Z13	OSS	2° 06' 09.807° E	53° 52' 38.856° N
Z01	RCS	0° 56' 09.864° E	53° 37' 39.301° N