

# NOTICE TO MARINERS

Notice of activities associated with operations on Dogger Bank Offshore Wind Farm, Dogger Bank A

Date of Issue	03/02/2021	Notice Number	LF500013-MIP-DOG-NOT-0003
---------------	------------	---------------	---------------------------

## Dogger Bank A landfall horizontal directional drill punch out survey

Dogger Bank Offshore Wind Farm is being developed in 3 phases – Dogger Bank A (DBA), Dogger Bank B (DBB) and Dogger Bank C (DBC) located off the north east coast of England in the southern North Sea.

Dogger Bank A and B are located approximately 131 kilometres (km) from shore at their closest point. The offshore export cables, which will run from the offshore substation platforms (OSP's) to the landfall, are 191 km in length for Dogger Bank A and 172 km for Dogger Bank B. These cables come ashore to the north of Ulrome on the Holderness Coast.

This notice to mariners (NtM) relates to the Horizontal Directional Drill (HDD) punch out survey at DBA.

### Contact Details for Marine Coordination and Fisheries Liaison

The following contact can provide more information if required:

Email for Marine Coordinator	John.bray@sse.com
Address	SSE Renewables, 241 West George Street , Glasgow G2 4QE

Fisheries liaison is coordinated by Brown and May Marine Ltd. For all fisheries enquiries, Jonathan Keer is the primary contact:

Telephone Number	01379 870181
Mobile number	07850604851
Email	jonathan@brownmay.com
Address	Mid Suffolk Business Park, 8 Progress Way, Eye IP23 7HU

# NOTICE TO MARINERS

## 1. Area of Planned Activity.

The coordinates of the survey area are provided below

ID	Latitude (DDM WGS 84)	Longitude (DDM WGS 84)
HDD Survey of DBA HDD Exit Point Offshore	54.0444 N	0.011751 W

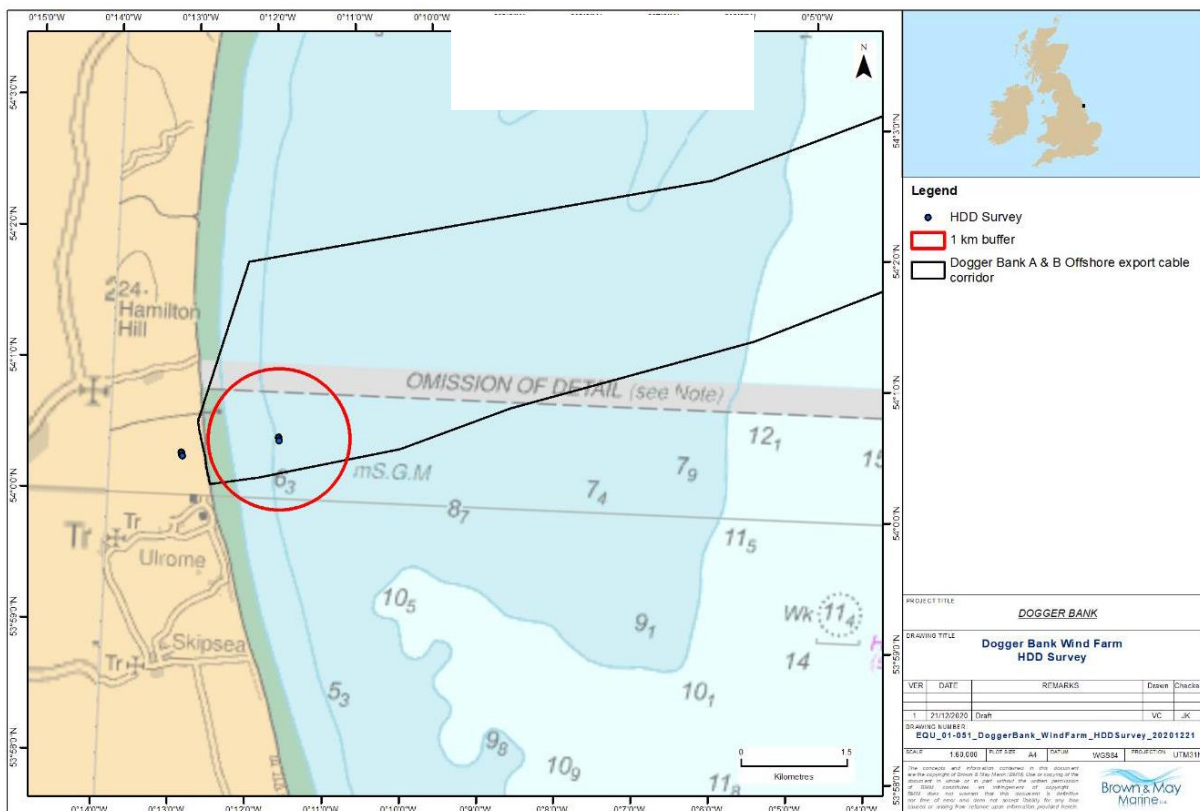


Fig 1 – Area of the HDD Survey

## 2. Activity Description.

A survey lasting one day will be carried out offshore once the pilot drill has punched out on to the sea bed to confirm accurate drill positions offshore, this is expected to be around 17<sup>th</sup> February subject to drilling progress.

# NOTICE TO MARINERS

### 3. Vessel associated with this activity.

MV Pulsar	
<b>General Description and Dimensions:</b>	MV Pulsar is a shallow drafted cheetah marine catamaran
<b>Call Sign:</b>	2FBX2
<b>MMSI:</b>	235089965
Satellite communications details	N/A
Direct Bridge/ Masters Number	07858 456 352 / 07879 881 739
<b>Onshore Representative:</b>	Ross Smith (NKT site rep) M: +44 7999 030808 Ross.Smith@nkt.com
Offshore Fisheries Liaison Officer (if applicable)	N/A



Fig 2 – MV Pulsar

# NOTICE TO MARINERS

## 4. General Safety Advice

All vessels engaged in the survey will exhibit appropriate lights and shapes prescribed by the International Regulations for Preventing Collisions at Sea; relative to their operations. All vessels engaged in the survey will also transmit an Automatic Identification System (AIS) message.

**ALL VESSELS ARE REQUESTED** to give the vessel engaged in this survey activity a wide berth.

**MARINERS ARE REMINDED** to navigate with caution and keep continuous watch on VHF Ch. 70/16 when navigating the area.

## 5. Distribution List

A central list of recipients is maintained by the Marine Coordinator; if you are not the appropriate recipient of these notices, or do not wish to receive the notices in the future, please contact us at the address included in Section 1 of this notice.

A copy of this notice can also be found at [www.doggerbank.com](http://www.doggerbank.com)

Further notices will be issued during the DBA HDD landfall punch out survey as and when required