

Ørsted - East Coast Operational Assets

Notice to Mariners

Period of Notice: April 2021

Version: Issue 4

Table of Contents

1	Introduction	3
1.1	Subsea Cables.....	4
1.2	Wind Farm Positional Data	4
2	Key Contacts.....	4
3	Notice to Mariners Summary:.....	5
4	Race Bank – Notice to Mariners	6
4.1	Lighting and Marking Status.....	6
4.2	Other Operations.....	6
4.2.1	Piggyback rectification work.....	6
5	Westermost Rough – Notice to Mariners	8
5.1	Lighting and Marking Status.....	8
5.2	Other Operations.....	8
5.2.1	Debris clearance survey.....	8
6	Lincs – Notice to Mariners.....	10
6.1	Lighting and Marking Status.....	10
6.2	Other Operations.....	10
6.2.1	Debris clearance survey.....	10
7	Gunfleet Sands – Notice to Mariners	12
7.1	Lighting and Marking Status.....	12
7.2	Other Operations.....	12
7.2.1	Transition Piece Maintenance (paint campaign).	12
8	Hornsea One – Notice to Mariners.....	13
8.1	Lighting and Marking Status.....	13
8.2	Other Operations.....	13
8.2.1	Met mast survey.....	13
8.2.2	Met mast removal..... Error! Bookmark not defined.	

1 Introduction

Ørsted is an offshore wind farm owner and operator with ten operational wind farms in UK waters. Of these ten, the following offshore wind farms are located off the East Coast of England:

- Gunfleet Sands
- Westermost Rough
- Race Bank
- Lincs
- Hornsea One

The purpose of this monthly Notice to Mariners (NtM) is to ensure that mariners are aware of any non-routine operations across the East Coast assets that could pose a risk to other sea users. Safety is paramount to Ørsted and this notice should assist in ensuring that both mariners and the Ørsted operational team can operate safely offshore. This NtM will provide:

- A regular, clear and consistent overview of non-routine operations
- Updates relating to lighting and marking
- Key contact details
- Access to detailed site information and figures
- Clarity on when Safety Zones and recommended safe separation distances are in force or requested



This Notice to Mariners will not provide:

- Information relating to routine maintenance carried out by Crew Transfer Vessels (CTV) or Service Operation Vessels (SOV).
- Any information relating to export cables
- Any information relating to offshore wind farms currently in development, construction or not operated by Ørsted

Subsea Cables

Subsea cables are installed across each offshore wind farm and are marked on the KIS ORCA charts referenced in Section 1.2. Please note the following advice from NP 100 The Mariners Handbook “Every care should be taken to avoid anchoring, trawling, fishing, dredging, drilling, or carrying out any other activity in the vicinity of cables which might damage them.” This warning is repeated on all admiralty charts.

Wind Farm Positional Data

KIS ORCA Awareness Charts (including the layout and coordinates) and Fishing Plotter Files of the offshore assets referenced in this NtM can be found via the KIS ORCA website: <http://www.kis-orca.eu/downloads#.XWUTQUxFwjZ>. Should mariners require further information or any data in a format that can be used in a plotter or other device, please contact the Company Fisheries Liaison Officer, listed in Section 2 below.

2 Key Contacts

For further information on any of the activities listed within this notice, please use the contact details listed below.

Site	Ørsted Mailbox/ Offshore Coordination	Fisheries Industry Representative
Race Bank	Phone: 07826 943808 Email: rowoffshorec@orsted.co.uk	Ady Woods Phone: 07468 898948 Email: firwoods@hotmail.com
Westermost Rough	Phone: 07867 674941 Email: wmroffshorec@orsted.co.uk	Guy Pasco Phone: 07880 362082 Email: guy@seascopefisheries.co.uk
Lincs	Phone: 07766443319 Email: lincsoffshorec@orsted.co.uk	Ady Woods Phone: 07468 898948 Email: firwoods@hotmail.com
Gunfleet Sands		Merlin Jackson Phone: 07989 520484 Email: merlinjackson@btinternet.com
Hornsea One	Phone: 07775005465 Email: HOWoffshoreC@orsted.co.uk	Nick Garside Phone: 07538 827013 Email: nick.garside@live.co.uk

Company Fisheries Liaison Officer

The Ørsted Company Fisheries Liaison Officer can be contacted using the details below:

Courtney French
Email: CONFR@Orsted.co.uk

3 Notice to Mariners Summary:

Site	Lighting and Marking Status	Survey	Jack-Up Vessel	Other Works
Race Bank	A01 Fog signal	None	None	WTG rectification
Westermost Rough	OK	Yes	None	None
Lincs	OK	Yes	None	None
Gunfleet Sands	OK	None	None	TP paint campaign°
Hornsea One	P01 marine lanterns extinguished & fog signal inactive.	Yes	Yes	Met-mast removal°, *

* Formal 500m safety zone in place

° Licensable activity

** 500m safety distance requested

*** 200m safety distance requested

4 Race Bank – Notice to Mariners

4.1 Lighting and Marking Status

Due to a fault, A01's fog signal is currently inoperative. We have also installed temporary marine lanterns on this location. No planned outages.

4.2 Other Operations

4.2.1 Piggyback rectification work

On the 31st March the Eden Rose will be on site to conduct some WTG internal repairs. The scope is expected to last around 2 weeks.

Vessel Information

General Information		Vessel Picture
Name	Eden Rose	
Flag	UK	
Year Built	2012	
MMSI Number	235092732	
Call Sign	2FNN5	
Vessel Contact Details		
Bridge	Master (TBC)	
Party Chief	07852125057	
Email	edenrose@tidal-transit.com	

Figure 1



Table 1

WTG ID	Degrees, Decimal Minutes	
	Latitude	Longitude
K03	53 15.629N	00 52.793E
L02	53 15.984N	00 53.396E
M01	53 15.721N	00 53.991E
M02	53 15.062N	00 54.425E

5 Westermost Rough – Notice to Mariners

5.1 Lighting and Marking Status

The lighting and/ or navigational warning systems are currently operational. No planned outages.

5.2 Other Operations

5.2.1 Debris clearance survey

During week 17 the Spectrum 2 will conduct a debris survey around the met mast identified below.

Vessel Information

General Information		Vessel Picture
Name	Spectrum 2	
Flag	UK	
Year	2013	
MMSI	235097363	
Call	2GHE5	
Vessel Contact Details		
Bridge	+44 (0) 7530 562 919	
Party Chief	TBD	
Email	Spectrum2@spectrum-offshore.com	

Figure 2

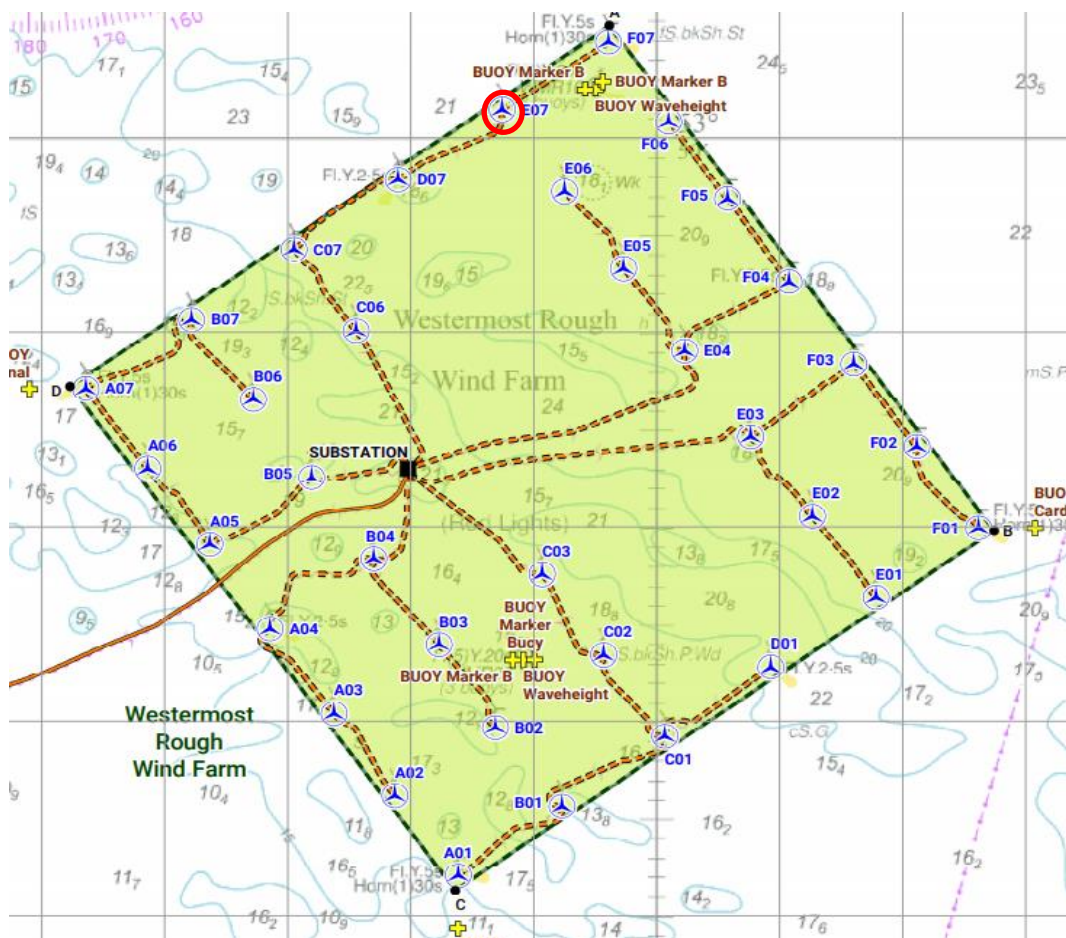


Table 2

WTG ID	Degrees, Decimal Minutes	
	Latitude	Longitude
E07	53°50.144'N	00°08.744'E

6 Lincs – Notice to Mariners

6.1 Lighting and Marking Status

The lighting and/ or navigational warning systems are currently operational. No planned outages.

6.2 Other Operations

6.2.1 Debris clearance survey

During week 17 the Spectrum 2 will conduct a debris survey around the met mast identified below.

Vessel Information

General Information		Vessel Picture
Name	Spectrum 2	
Flag	UK	
Year	2013	
MMSI	235097363	
Call	2GHE5	
Vessel Contact Details		
Bridge	+44 (0) 7530 562 919	
Party Chief	TBD	
Email	Spectrum2@spectrum-offshore.com	

Figure 3

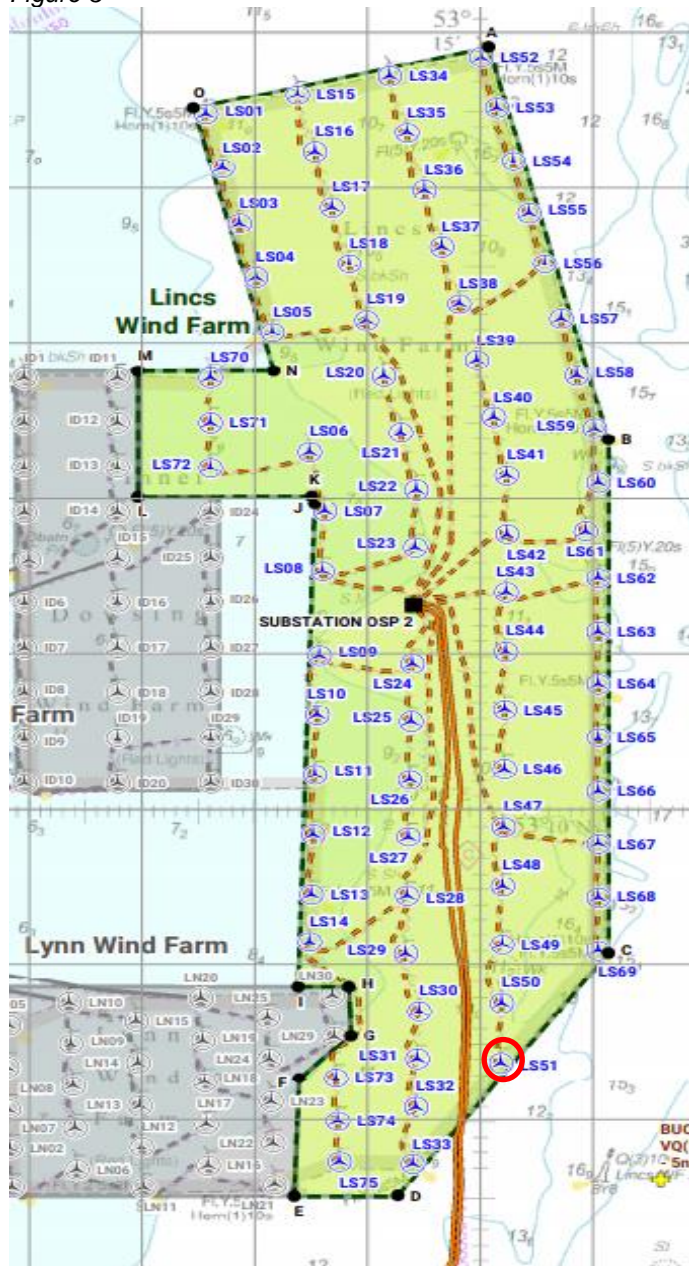


Table 2

WTG ID	Degrees, Decimal Minutes	
	Latitude	Longitude
LS51	53°08.365'N	00°30.183'N

7 Gunfleet Sands – Notice to Mariners

7.1 Lighting and Marking Status

The lighting and/ or navigational warning systems are currently operational. No planned outages.

7.2 Other Operations

7.2.1 Transition Piece Maintenance (paint campaign).

Transition Piece maintenance will be undertaken on all WTG's on GFS01 + GFS02 from the 22nd March for a provisional 3 months. Sequence of locations and dates are unavailable as works will be weather dependant and coordinated to ensure no conflict with routine maintenance operations.

We request Mariners observe a safe distance from the affected turbine(s) while works are being carried out.

The CTV "WEM 1" will act as Guard Vessels during the maintenance programme with the vessel broadcasting the Turbine ID, establishment/cancellation of the safety zones and seeking contact with marine traffic approaching or nearing the areas on VHF Channel 16 and 12.

Vessel Information

General Information		Vessel Picture
Name	Wem 1	
Flag	United Kingdom	
Year Built	2018	
MMSI Number	232013884	
Call Sign		
Vessel Contact Details		
Bridge	+44 (0) 7944 886553	
Party Chief		
Email	wem1@windenergymarine.com	

8 Hornsea One – Notice to Mariners

8.1 Lighting and Marking Status

P01 marine lanterns currently extinguished and foghorn not operational, will be rectified as soon as possible. Nav warnings issued.

8.2 Other Operations

8.2.1 Met mast survey

During week 14 the MHO Grimsby will conduct a debris survey around the met mast identified below.

Vessel Information


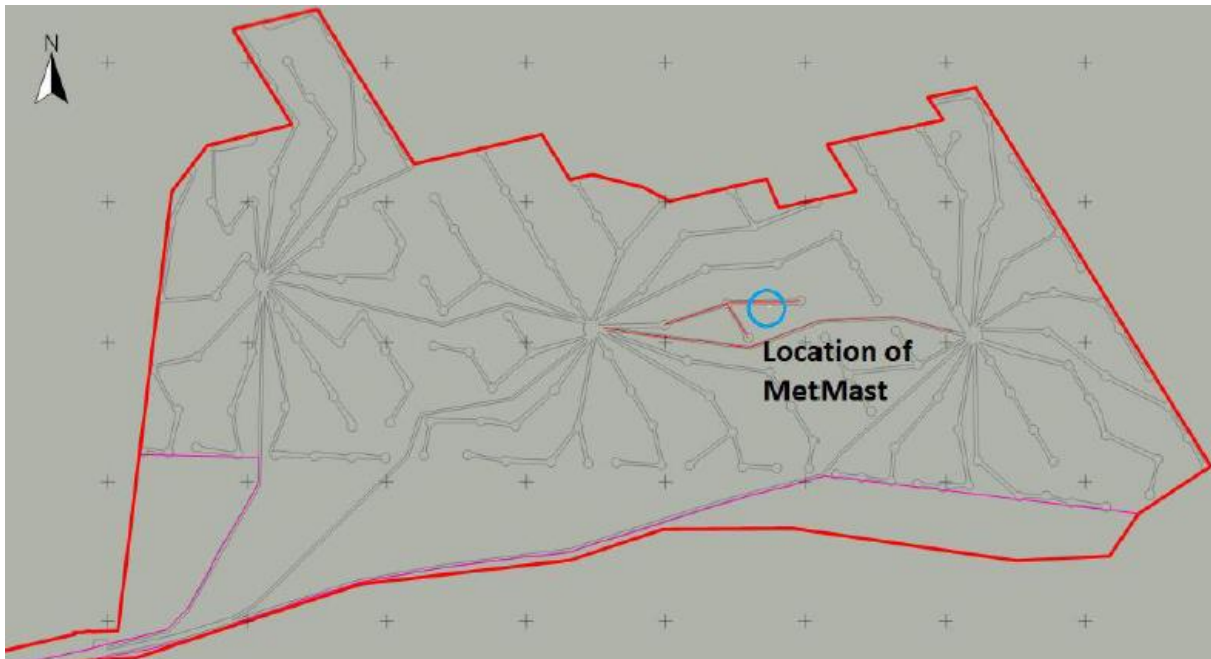
General Information		Vessel Picture
Name	MHO Grimsby	
Flag	Danish	
Year Built	2016	
MMSI	219025992	
Call Sign	OYKR2	
Vessel Contact Details		
Bridge	mho-grimsby@mho-co.dk	
Party Chief	Ryan Knight (Present) Danielle Row (Joining)	
Email	ryan.knight@spectrum-offshore.com /	

Figure 4



Coordinates

WTG ID	Degrees, Decimal Minutes	
	Latitude	Longitude
Met mast	53°53.149'N	01°59.499'E

8.2.2 Met mast removal

On the 24th April the vessel Neptune will be on site to remove the Met mast, location is shown below. All vessels are required to keep a safe distance of 500m away from the vessel Neptune. The work is anticipated to last 7 days.

Vessel Information


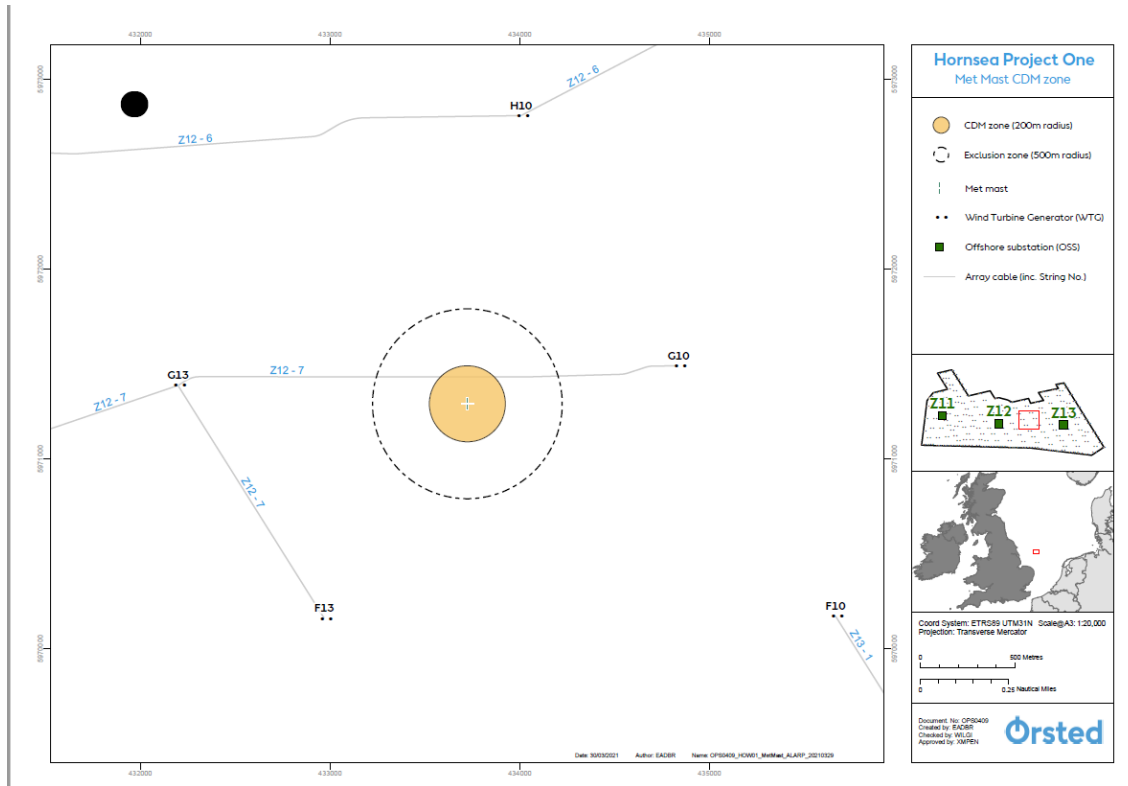
General Information		Vessel Picture
Name	Neptune	
Flag	Luxemburg	
Year Built	2012	
MMSI	253532000	
Call Sign	LXNP	
Vessel Contact Details		
Bridge	+4942 15172 19174	
Party Chief	Cyril Girardeux +32470892190	
Email	Neptune@DEME-GROUP.com	

Figure 5



Coordinates

WTG ID	Degrees, Decimal Minutes	
	Latitude	Longitude
Met mast	53°53.149'N	01°59.499'E