



# Notice to Mariners – Hornsea Project Two

## Notice of Export Cable Installation Activities – Vessel details – 01/04/2021

### 1. INTRODUCTION

Mariners are advised that Ørsted will be commencing Pre-Lay Grapnel Run (PLGR) along the Hornsea Project Two export cable route, as part of the export cable installation scope for the Hornsea Project Two Offshore Wind Farm. Updated vessel details covering the export cable installation activities are provided in Section 6.

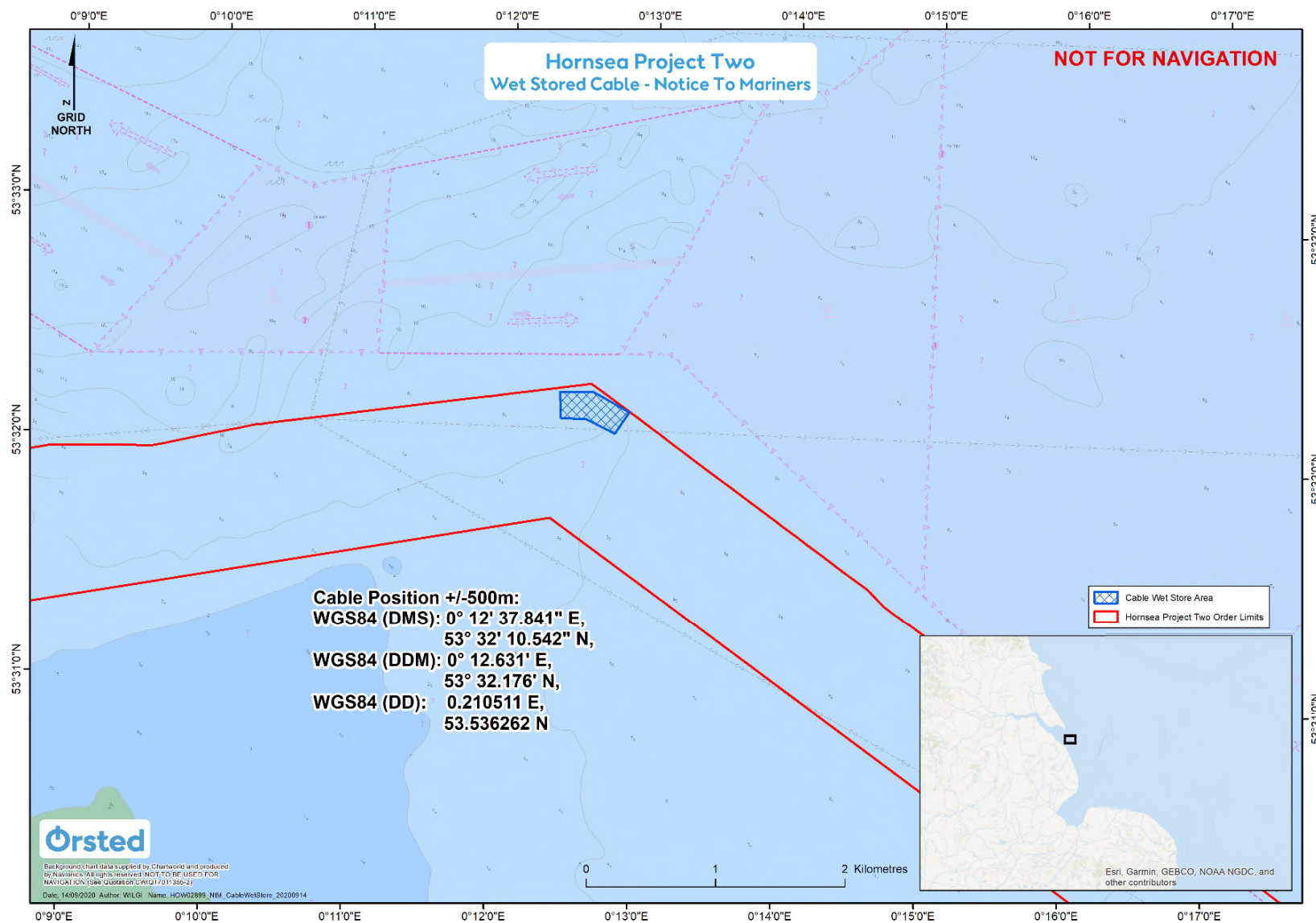
Mariners are advised that the Titan Endeavour and the Ivero have mobilised to site to carry out survey works that will continue intermittently through 2021.

### 2. AREA OF OPERATIONS

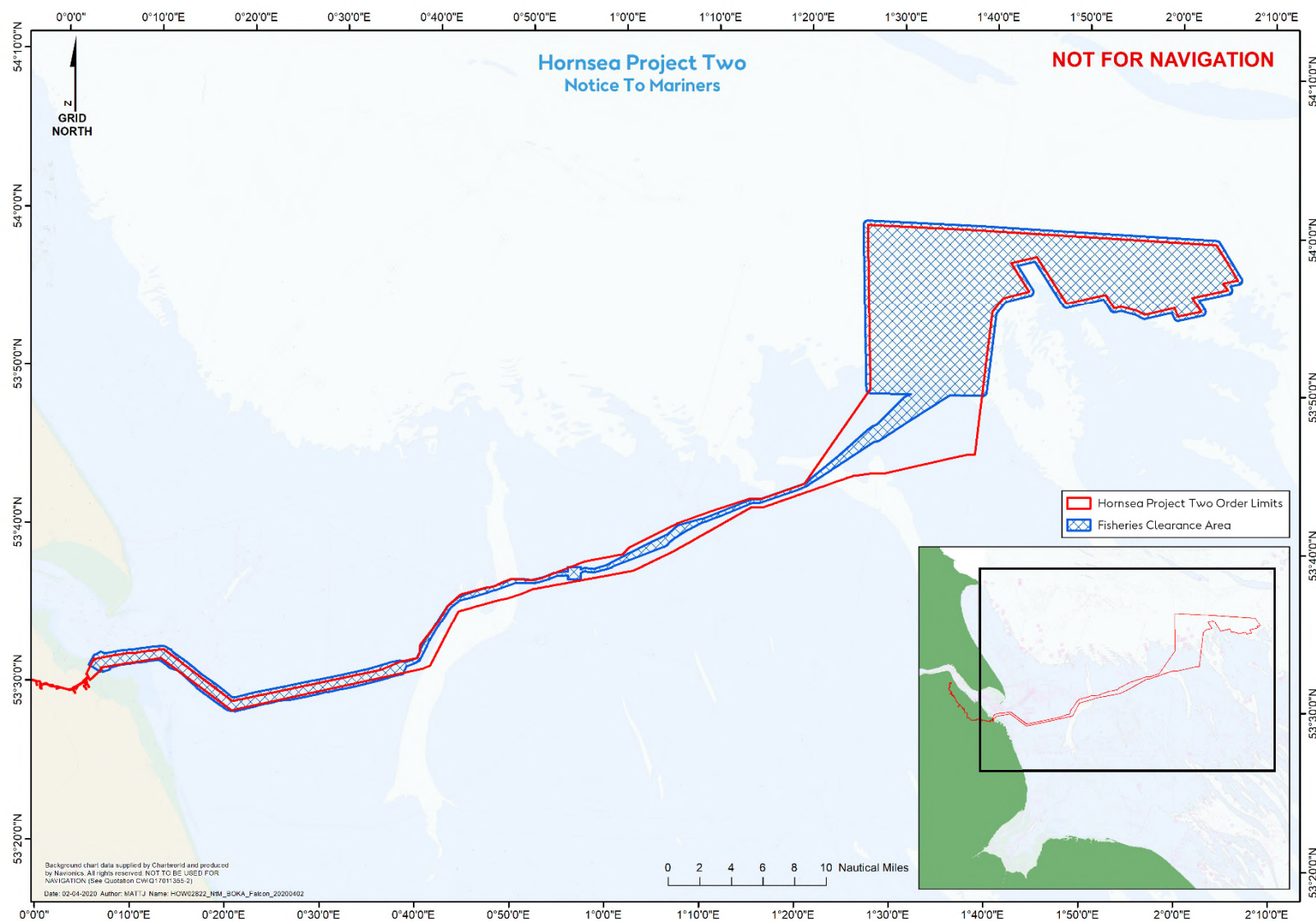
Activities are being carried out on the Hornsea Project Two Offshore Wind Farm export cable route as shown in Figure 2. Mariners are advised that MaxSea and Olex plotter files of the proposed works area can be provided by the Project's Commercial Fisheries Advisors at Brown and May Marine Limited and the Project's onshore fisheries liaison. Contact details are provided in Section 5 of this Notice.

Note that these works will be carried out alongside ongoing survey and construction activities for Hornsea Project Two.

Figure 1. Cable remedials location



**Figure 2. Proposed Construction Area**



### 3. PROPOSED ACTIVITIES

#### 3.1 Export Cable Installation

Please be advised that Boskalis will be undertaking PLGR on or around 6<sup>th</sup> April 2021 with the Coastal Chariot along the Hornsea Project Two export cable route. In addition to this, dredging works are commencing on or around 2<sup>nd</sup> April 2021 with the Willem Van Oranje in certain locations along the Hornsea Project Two export cable route. The Titan Endeavour has mobilised to site to carry out survey works that will continue intermittently through 2021. Other export cable survey and preparation works are ongoing and intermittent.

Boskalis are temporarily wet storing a cable at the RCS and the OSS. A guard vessel will be present, subject to safe weather conditions, whilst the cable is wet-stored but it is advised that mariners maintain a safe clearance. Details of the vessels are provided in Section 6. When the works are complete, this Notice will be updated and re-issued.

Note that the vessels will have limited manoeuvrability, some vessels will be operating on anchors, and it is requested that all vessels operating near the vessels maintain a safe distance (at least 500m) and pass all vessels at minimum speed.

#### 3.2 Safety

It is requested that anybody having knowledge of any potential objects submerged or moored on the seabed within the works area that could be damaged or form a hazard to the vessel and its equipment advises the Project's Fishing Industry Liaison of their position and nature. The Project has also requested the clearance of static fishing gear within the boundary shown in Figure 2 and described in Section 7 of this Notice. When works commence a listening watch will be maintained on VHF Channel 12 and 16 when within the appropriate port authority area and will actively transmit an AIS signal.

### 4. IMMEDIATE CONTACTS

The contents of this notice are based upon our current understanding of Project Two requirements. A further notice will be issued once activities are completed.

Enquiries regarding the contents of this Notice to Mariners or any other matters should be directed to:

<b>Project Manager (Ørsted)</b> (Office hours only)	Richard Irving	
	Tel: +44 78 5 4276523	E-mail: <a href="mailto:ricir@orsted.co.uk">ricir@orsted.co.uk</a>
<b>Project Manager (Boskalis)</b> (Office hours only)	Steve Marshall	
	Tel: +44 7970 750 385	E-mail: <a href="mailto:steve.marshall@boskalis.com">steve.marshall@boskalis.com</a>

### 5. FISHERIES LIAISON

Onshore Fisheries Liaison is provided by Nick Garside and Sophie Farenden who can be contacted on:

E-mail: <a href="mailto:nick.garside@live.co.uk">nick.garside@live.co.uk</a>	Mob: +44 (0) 7538 827013
Email: <a href="mailto:sophie.farenden@brownmay.com">sophie.farenden@brownmay.com</a>	Mob: +44 (0)7525 128344

An Offshore Fisheries Liaison Officer is onboard the Emswind Guard Vessel and Defiant Guard Vessel contactable on VHF channel 16, if required.


In the event the Offshore or Onshore Fisheries Liaison is not contactable please direct fisheries enquiries related to the works to the Ørsted Company Fisheries Liaison Officer:

Company Fisheries Liaison Officer – Courtney French	Tel: +44 (0)7796 447372	E-mail: <a href="mailto:CONFR@orsted.co.uk">CONFR@orsted.co.uk</a>
--	-------------------------	--




## 6. VESSELS

Operations will be conducted by a number of vessels as provided below. Additional vessels may mobilise to site as required. Contact can be made directly with the vessels, where necessary, using the contact details listed below. This Notice will be updated with further contact details once confirmed. Client and contractor contact details are provided in Section 4 and 5 of this NtM.

Vessel Details – Coastal Chariot	
 <p>Hette Kloosterman marine@traffic.com</p>	
Vessel Type / Function	PLGR
Vessel telephone	V-SAT: +31 850090503
Vessel email	<a href="mailto:Chariot@coastalworkboats.com">Chariot@coastalworkboats.com</a>
Call Sign	PCWZ
MMSI	244770069


Vessel Details – Willem van Oranje	
	
Vessel Type / Function	Dredging/pre-sweeping
Vessel telephone	+31788080276 (V-SAT captain)

	+31788080279 (V-SAT chief) +31788080253 (V-SAT bridge)
Vessel email	<a href="mailto:Willem-Captain@boskalis.com">Willem-Captain@boskalis.com</a> <a href="mailto:Willem-Crew@Boskalis.com">Willem-Crew@Boskalis.com</a>
Call Sign	5BVU3
MMSI	210621000

Vessel Details – BOKA Barge 82	
 <p>© Ian Greenwood MarineTraffic.com</p>	
Vessel Type / Function	Cable Repair
Vessel telephone	+47 23672903 +47 23672904
Vessel email	<a href="mailto:bokabarge82-bridge@boskalis.com">bokabarge82-bridge@boskalis.com</a> <a href="mailto:bokabarge82-captain@boskalis.com">bokabarge82-captain@boskalis.com</a>
Call Sign	5BY4U
MMSI	209253000

Vessel Details – Coastal Vanguard	
	
Vessel Type / Function	AHT
Vessel telephone	VSat +3185 009 0212 Mobile +31682656179
Vessel email	<a href="mailto:vanguard@coastalworkboats.com">vanguard@coastalworkboats.com</a>


Call Sign	PCFH
MMSI	356286000


Vessel Details – Barney	
	
Vessel Type / Function	Anchor Handling Tug
Vessel telephone	SAT: +311787470041
Vessel email	<a href="mailto:barney@hermansr.com">barney@hermansr.com</a>
Call Sign	PCZU
MMSI	244850156

Vessel Details – Voe Vanguard	
	
Vessel Type / Function	Anchor Handling Tug
Vessel telephone	VSAT: 881 631 448 600 Mobile: +44 7766 798 481
Vessel email	<a href="mailto:voevanguard@deltamarine.scot">voevanguard@deltamarine.scot</a>
Call Sign	MBEN9



MMSI	232008636
------	-----------

Vessel Details – MTSL Falcon	
	
Vessel Type / Function	Crew Transfer Vessel (CTV)
Vessel telephone	Bridge: +44 (0) 7917477648 Sat: +87 0773923623
Vessel email	<a href="mailto:Mtsl.Falcon@gardline.com">Mtsl.Falcon@gardline.com</a>
Call Sign	2FDO4
MMSI	235090347

Vessel Details – Rockpipec	
	
Vessel Type / Function	Post-Lay Rock Installation
Vessel telephone	Bridge: +31 78 80 80 273 Captain: +31 78 80 80 262 Sat: +87 07 73 1879 51
Vessel email	<a href="mailto:rockpipec-bridge@boskalis.com">rockpipec-bridge@boskalis.com</a> <a href="mailto:rockpipec-captain@boskalis.com">rockpipec-captain@boskalis.com</a>
Call Sign	5BML3



<b>MMSI</b>	209449000
-------------	-----------

Vessel Details – Ndurance
---------------------------



<b>Vessel Type / Function</b>	Cable installation and burial
<b>Vessel telephone</b>	+31 65 109 0370 +31 10 713 0548 (V-sat)
<b>Vessel email</b>	<a href="mailto:ndurance-captain@boskalis.com">ndurance-captain@boskalis.com</a>
<b>Call Sign</b>	5BVH3
<b>MMSI</b>	209851000

Vessel Details – NKT Victoria
-------------------------------



<b>Vessel Type / Function</b>	Farshore cable installation
<b>Vessel telephone</b>	+47 2240 8110 (Bridge) +47 2240 8120 (Captain)
<b>Vessel email</b>	<a href="mailto:bridge.victoria@remoy.management.no">bridge.victoria@remoy.management.no</a> <a href="mailto:captain.victoria@remoy.management.no">captain.victoria@remoy.management.no</a>
<b>Call Sign</b>	LAWV7
<b>MMSI</b>	257016000

### Vessel Contact Details – Boka Falcon



<b>Vessel Type / Function</b>	Cable trenching and burial
<b>Vessel telephone</b>	+31 788 080 929
<b>Vessel email</b>	<a href="mailto:bokafalcon-bridge@boskalis.com">bokafalcon-bridge@boskalis.com</a>
<b>Call Sign</b>	ORTD
<b>MMSI</b>	205787000

### Vessel Contact Details – Coastal Challenger



<b>Vessel / Type / Function</b>	Anchor handling tug / pre-lay grapnel run, cable remedial work
<b>Vessel telephone</b>	Mob + 31 13 6 05 784 V-Sat +31 85 00 90 585
<b>Vessel email</b>	<a href="mailto:challenger@coastalworkboats.com">challenger@coastalworkboats.com</a>
<b>Call Sign</b>	PBOC
<b>MMSI</b>	244913000

### Vessel Contact Details – Noordstroom



<b>Vessel / Type / Function</b>	Anchor handling tug
<b>Vessel telephone</b>	+31 10 3403079 +31 10 6690405 +31 653 894479
<b>Vessel email</b>	<a href="mailto:noordstroom@wijngaarden.com">noordstroom@wijngaarden.com</a>
<b>Call Sign</b>	PIWC
<b>MMSI</b>	244006000

### Vessel Details – Lingestroom



<b>Vessel Type / Function</b>	AHT
<b>Vessel telephone</b>	+31 (0) 184 78 8128 +31 (0) 612 44 1220
<b>Vessel email</b>	<a href="mailto:Lingestroom@wijngaarden.com">Lingestroom@wijngaarden.com</a>
<b>Call Sign</b>	PICW
<b>MMSI</b>	244016000



### Vessel Contact Details – Maagd



<b>Vessel / Type / Function</b>	Landfall transportation barge
<b>Vessel telephone</b>	n/a
<b>Vessel email</b>	n/a
<b>Call Sign</b>	n/a
<b>MMSI</b>	n/a

### Vessel Contact Details – Spirit



<b>Vessel / Type / Function</b>	Cable installation and burial
<b>Vessel telephone</b>	TBC
<b>Vessel email</b>	TBC
<b>Call Sign</b>	5BWK4
<b>MMSI</b>	212471000

### Vessel Details – Titan Endeavour




<b>Vessel Type / Function</b>	Nearshore Survey
<b>Vessel telephone</b>	+44 (0)7867 552553
<b>Vessel email</b>	<a href="mailto:Titan.Endeavour@titansurveys.com">Titan.Endeavour@titansurveys.com</a>
<b>Call Sign</b>	2ELT9
<b>MMSI</b>	235086211

### Vessel Details – Ivero



<b>Vessel Type / Function</b>	Farshore survey
<b>Vessel telephone</b>	Mob: +44 (0)7917 477672 Fleet: +870 773 991 015
<b>Vessel email</b>	<a href="mailto:master@ivero.gardline.co.uk">master@ivero.gardline.co.uk</a>
<b>Call Sign</b>	MCJ03
<b>MMSI</b>	232013165

Vessel Details – Dutch Power	
	
Vessel Type / Function	Anchor Handling Tug (NDurance CLV)
Vessel telephone	Mobile: +31 (0)6-54 79 06 86 Mobile International: +372 81 69 60 41 Sat Tel (V-Sat) +31 (0)31-10 669 05 31
Vessel email	<a href="mailto:Tug.dutchpower@gmail.com">Tug.dutchpower@gmail.com</a>
Call Sign	PBTZ
MMSI	246607000

Vessel Details – MCS Sirocco	
	
Vessel Type / Function	CTV
Vessel telephone	+44 7920 569689
Vessel email	<a href="mailto:mcssirocco@maritimecraft.co.uk">mcssirocco@maritimecraft.co.uk</a>
Call Sign	2FFP4
MMSI	235090843



### Vessel Details – Defiant



<b>Vessel Type / Function</b>	Guard Vessel
<b>Vessel telephone</b>	+44 (0) 1261455459
<b>Vessel email</b>	gvdefiant@gmail.com
<b>Call Sign</b>	MLAS6
<b>MMSI</b>	233651000

### Vessel Details – Adventure



<b>Vessel Type / Function</b>	Guard Vessel
<b>Vessel telephone</b>	+44 (0) 1947 750717
<b>Vessel email</b>	<a href="mailto:gvadventure@gmail.com">gvadventure@gmail.com</a>
<b>Call Sign</b>	2IFE4
<b>MMSI</b>	235109237

### Vessel Details – Resilient




Vessel Type / Function	Guard Vessel
Vessel telephone	+44 (0) 2841140788
Vessel email	gvresilient@gmail.com
Call Sign	GSSE9
MMSI	232711000

### Vessel Details – NG Worker



Vessel Type / Function	Post-Lay Burial / Remedial Works
Vessel telephone	+39 (0) 3429976700
Vessel email	<a href="mailto:ngworker@nextgeosolutions.com">ngworker@nextgeosolutions.com</a>
Call Sign	ICID
MMSI	247440700

Vessel Details – MHO Esbjerg	
 <p>© Nils Junge MarineTraffic.com</p>	
Vessel Type / Function	Support Vessel/CTV
Vessel telephone	SAT: +45 82136423 Mob: +45 53764645
Vessel email	MHO-Esbjerg@mho-co.dk
Call Sign	OXIG2
MMSI	219023786

## 7. COORDINATES

### Cable repair and cable joint coordinates

Cable activity location	Latitude (DDM) (WGS84)	Longitude (DDM) (WGS84)	Latitude (DD) (WGS84)	Longitude (DD) (WGS84)
Figure 1 – cable repair	53° 32.176' N	0° 12.631' E	53.536262 N	0.210511 E

### Shown in Figure 3 – Proposed construction area

Latitude (DMS) (WGS84)	Longitude (DMS) (WGS84)
53° 59' 47,212" N	2° 4' 13,879" E
53° 57' 33,751" N	2° 6' 35,650" E
53° 57' 15,701" N	2° 6' 36,035" E
53° 57' 6,478" N	2° 6' 18,896" E
53° 56' 59,777" N	2° 5' 28,497" E
53° 56' 42,915" N	2° 5' 36,351" E
53° 56' 28,883" N	2° 5' 17,519" E
53° 56' 3,483" N	2° 2' 8,588" E
53° 55' 27,479" N	2° 2' 46,083" E
53° 55' 15,410" N	2° 2' 44,720" E



Latitude (DMS) (WGS84)	Longitude (DMS) (WGS84)
53° 55' 6,438" N	2° 2' 32,255" E
53° 54' 43,304" N	1° 59' 50,397" E
53° 54' 49,180" N	1° 59' 21,898" E
53° 55' 12,752" N	1° 59' 2,060" E
53° 54' 48,758" N	1° 56' 10,242" E
53° 55' 4,977" N	1° 55' 8,846" E
53° 55' 17,637" N	1° 53' 38,207" E
53° 55' 12,551" N	1° 52' 45,906" E
53° 55' 19,225" N	1° 52' 28,565" E
53° 56' 0,723" N	1° 51' 42,606" E
53° 55' 28,077" N	1° 47' 37,142" E
53° 55' 35,546" N	1° 47' 20,574" E
53° 58' 20,012" N	1° 44' 17,211" E
53° 58' 5,598" N	1° 42' 39,466" E
53° 56' 39,567" N	1° 44' 13,897" E
53° 56' 25,332" N	1° 44' 17,657" E
53° 56' 11,448" N	1° 43' 56,913" E
53° 55' 46,244" N	1° 41' 19,719" E
53° 55' 1,973" N	1° 40' 23,796" E
53° 50' 2,447" N	1° 39' 30,939" E
53° 49' 49,003" N	1° 39' 16,731" E
53° 49' 46,428" N	1° 35' 32,259" E
53° 46' 48,702" N	1° 28' 4,620" E
53° 46' 42,946" N	1° 27' 31,338" E
53° 43' 49,843" N	1° 20' 24,581" E
53° 42' 44,084" N	1° 15' 38,529" E
53° 42' 41,344" N	1° 14' 42,628" E
53° 41' 21,520" N	1° 9' 20,997" E
53° 40' 22,700" N	1° 6' 37,474" E
53° 39' 47,066" N	1° 5' 28,175" E
53° 38' 16,403" N	0° 59' 25,479" E
53° 38' 2,077" N	0° 57' 59,391" E
53° 38' 4,166" N	0° 56' 57,224" E
53° 37' 58,937" N	0° 56' 42,467" E
53° 37' 33,594" N	0° 56' 40,248" E
53° 37' 31,948" N	0° 55' 15,847" E
53° 37' 47,540" N	0° 55' 10,458" E
53° 37' 44,942" N	0° 54' 9,203" E
53° 37' 14,693" N	0° 51' 46,505" E
53° 37' 14,455" N	0° 49' 47,661" E
53° 36' 44,170" N	0° 47' 39,734" E
53° 36' 0,540" N	0° 43' 53,312" E
53° 35' 29,375" N	0° 42' 55,137" E
53° 33' 22,426" N	0° 40' 48,516" E
53° 32' 7,546" N	0° 39' 51,893" E

Latitude (DMS) (WGS84)	Longitude (DMS) (WGS84)
53° 31' 43,170" N	0° 38' 30,952" E
53° 31' 12,017" N	0° 38' 4,665" E
53° 30' 18,230" N	0° 32' 55,750" E
53° 29' 22,551" N	0° 26' 30,856" E
53° 29' 12,115" N	0° 24' 45,142" E
53° 28' 29,570" N	0° 20' 21,581" E
53° 28' 37,086" N	0° 19' 22,247" E
53° 29' 50,796" N	0° 16' 18,425" E
53° 30' 54,775" N	0° 14' 10,391" E
53° 31' 2,707" N	0° 13' 24,903" E
53° 31' 31,865" N	0° 12' 8,960" E
53° 31' 8,839" N	0° 8' 14,664" E
53° 30' 56,336" N	0° 7' 6,528" E
53° 30' 48,777" N	0° 7' 1,728" E
53° 30' 39,121" N	0° 6' 17,311" E
53° 30' 39,405" N	0° 5' 52,891" E
53° 31' 5,230" N	0° 4' 40,609" E
53° 31' 48,148" N	0° 5' 14,392" E
53° 32' 0,611" N	0° 5' 54,673" E
53° 31' 55,416" N	0° 6' 23,153" E
53° 32' 11,157" N	0° 8' 27,502" E
53° 32' 31,751" N	0° 12' 37,383" E
53° 32' 19,716" N	0° 13' 26,968" E
53° 32' 8,099" N	0° 13' 44,182" E
53° 29' 28,003" N	0° 20' 8,972" E
53° 31' 7,268" N	0° 31' 29,653" E
53° 31' 33,595" N	0° 34' 20,769" E
53° 32' 0,629" N	0° 36' 36,759" E
53° 32' 9,093" N	0° 37' 40,901" E
53° 32' 4,863" N	0° 38' 20,144" E
53° 32' 20,102" N	0° 39' 23,807" E
53° 33' 35,071" N	0° 40' 20,327" E
53° 35' 40,809" N	0° 42' 26,986" E
53° 36' 18,396" N	0° 43' 39,237" E
53° 36' 44,069" N	0° 45' 23,338" E
53° 37' 7,109" N	0° 47' 34,987" E
53° 37' 33,029" N	0° 49' 10,746" E
53° 37' 33,513" N	0° 51' 28,386" E
53° 38' 2,090" N	0° 53' 44,466" E
53° 38' 9,119" N	0° 55' 9,396" E
53° 38' 26,805" N	0° 55' 12,814" E
53° 38' 28,306" N	0° 56' 36,030" E
53° 38' 20,125" N	0° 56' 41,437" E
53° 38' 24,187" N	0° 57' 1,622" E
53° 38' 21,625" N	0° 57' 55,787" E

Latitude (DMS) (WGS84)	Longitude (DMS) (WGS84)
53° 38' 37,874" N	0° 59' 18,954" E
53° 40' 39,445" N	1° 5' 39,744" E
53° 41' 15,927" N	1° 6' 49,625" E
53° 41' 48,180" N	1° 9' 45,281" E
53° 43' 0,796" N	1° 14' 34,354" E
53° 43' 3,158" N	1° 15' 27,373" E
53° 44' 5,955" N	1° 20' 8,767" E
53° 45' 51,124" N	1° 23' 36,801" E
53° 47' 35,307" N	1° 26' 46,815" E
53° 47' 58,031" N	1° 27' 46,976" E
53° 49' 40,483" N	1° 30' 32,038" E
53° 49' 47,250" N	1° 30' 53,561" E
53° 49' 47,882" N	1° 26' 56,955" E
53° 49' 52,264" N	1° 26' 39,020" E
53° 50' 2,497" N	1° 26' 28,120" E
54° 0' 31,528" N	1° 25' 47,038" E
54° 0' 42,580" N	1° 25' 52,784" E
54° 0' 49,685" N	1° 26' 7,903" E
54° 0' 37,879" N	1° 38' 38,420" E
53° 59' 56,311" N	2° 3' 47,577" E
53° 59' 47,212" N	2° 4' 13,879" E