



# Hornsea Three

## Notice to Mariners

### Notice of Export Cable Route Geophysical Survey Commencement

Ref: 06919637\_B

01/04/2021

## 1 Introduction

1. Mariners are advised that Ørsted will be commencing a scope of geophysical survey works within the Export Cable Route (ECR) corridor in mid-April 2021. The survey is being undertaken for the purposes of geophysical investigation of the ECR corridor of the Hornsea Project Three Offshore Wind Farm (Hornsea Three) project, located within the UK Sector of the North Sea, off the coast of East Yorkshire as shown in the figure within this Notice.

## 2 Area of operations

2. Activities are being carried out within the Hornsea Three Order Limits, and the extent of the area in which the survey will be conducted is shown in Figure 1.
3. Mariners are advised that MaxSea and Olex plotter files of the proposed survey area can be provided by the Project's Commercial Fisheries Advisors at Brown and May Marine Limited and Hornsea Three's Onshore Fisheries Liaison. Contact details are provided in Section 5 of this Notice.

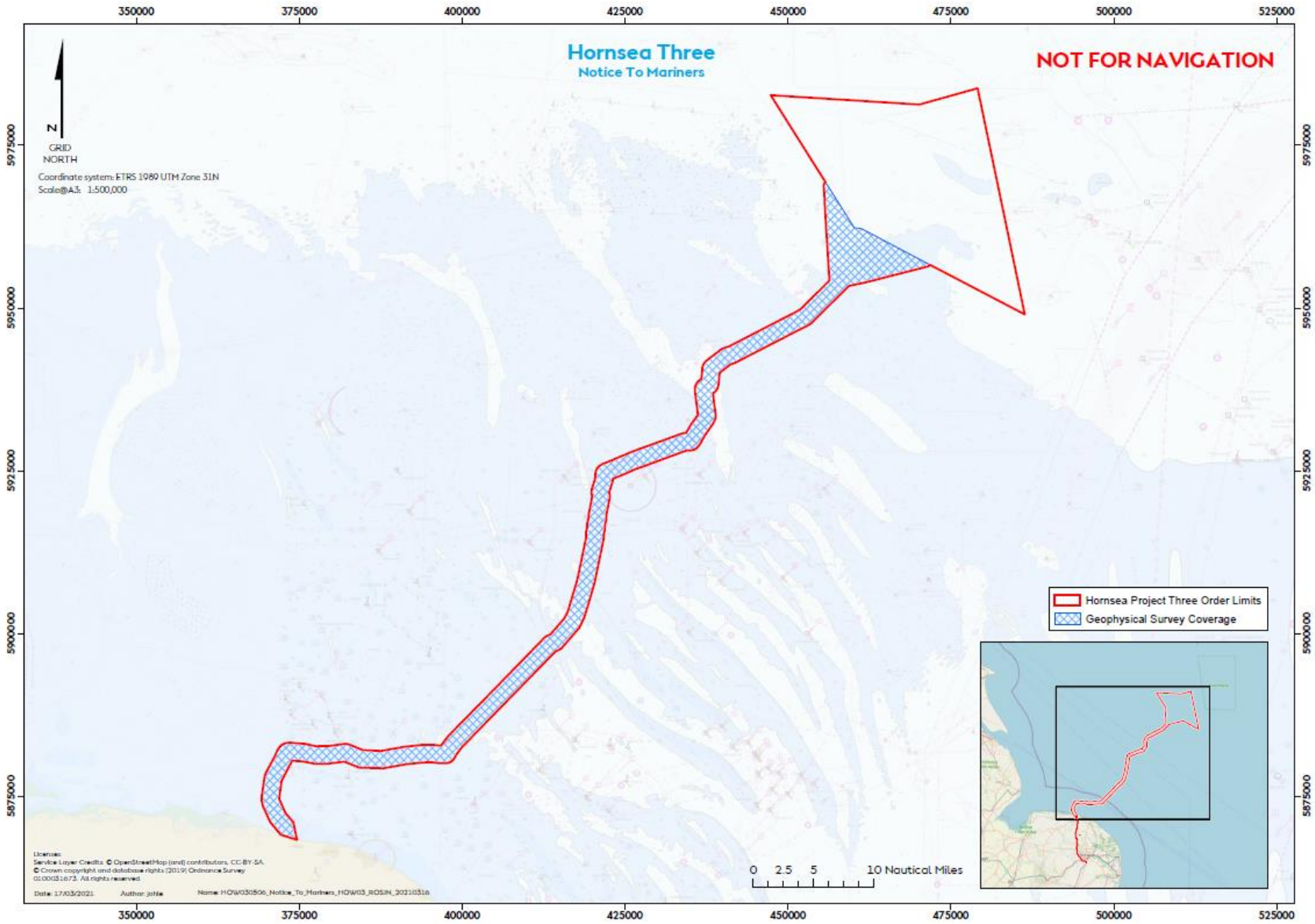


Figure 1: Hornsea Three Survey Coverage

### 3 Proposed activities

#### 3.1 Proposed survey activity

4. Please be advised that the operations will commence mid-April and last for approximately two weeks. The exact survey dates are dependent on weather and work progress.
5. Note that the vessels will have limited manoeuvrability and it is requested that all vessels operating near the vessels maintain a safe distance (at least 500m) and pass all vessels at minimum speed.

#### 3.2 Safety

6. It is requested that anybody having knowledge of any potential objects submerged or moored on the seabed within the survey area that could be damaged or form a hazard to the survey vessel and its equipment advises Hornsea Three's Onshore Fisheries Liaison of their position and nature.
7. Hornsea Three has requested the clearance of static fishing gear within the survey boundary shown in Figure 1 and described in Section 7 of this Notice. When surveys commence, a listening watch will be maintained on VHF Channel 12 and 16 when the survey vessel is within the appropriate port authority area and will actively transmit an AIS signal.

### 4 Immediate contacts

The contents of this notice are based upon our current understanding of Hornsea Three's requirements.

Enquiries regarding the contents of this Notice to Mariners or any other matters should be directed to:

<b>Project Manager (Ørsted)</b> (Office hours only)	Darren Baylis	
	Tel: +44 7831 166 154	E-mail: DARBA@orsted.co.uk

### 5 FISHERIES LIAISON

Onshore Fisheries Liaison is provided by Steve Hepples (Hornsea Three Fishing Industry Representative) and Sophie Farenden who can be contacted on:

E-mail: <a href="mailto:sghepples@gmail.com">sghepples@gmail.com</a>	Mob: +44 (0)7494267862
Email: <a href="mailto:sophie.farenden@brownmay.com">sophie.farenden@brownmay.com</a>	Mob: +44 (0)7525 128344

An Offshore Fisheries Liaison Officer (OFLO) will be on board the geophysical survey vessel. Contact details for the OFLO are below.


Offshore Fisheries Liaison Officer – Courtney French	E-mail: <a href="mailto:danielwillard5@icloud.com">danielwillard5@icloud.com</a>
--	--

In the event the Offshore or Onshore Fisheries Liaison is not contactable please direct fisheries enquiries related to the works to the Ørsted Company Fisheries Liaison Officer:


Company Fisheries Liaison Officer – Courtney French	Tel: +44 (0)7796 447372	E-mail: <a href="mailto:CONFR@orsted.co.uk">CONFR@orsted.co.uk</a>
---	-------------------------	--

**6 Vessels**

8. Operations will be conducted by the vessel detailed below. Additional vessels may mobilise to site as required. Contact can be made directly with the vessel, where necessary, using the contact details listed below. This Notice will be updated with further contact details once confirmed. Client and contractor contact details are provided in Section 4 and 5 of this NtM.

Vessel Details – Geo-Ocean	
	
<b>Vessel Type / Function</b>	Survey
<b>Vessel telephone</b>	+32 476 96 08 75 / VOIP +45 32 22 19 61
<b>Vessel email</b>	bridge.geo-ocean4@geoxyz.lu
<b>Call Sign</b>	LXHD
<b>MMSI</b>	253641000

9. The below pilot vessel is anticipated to be used throughout the survey activities.

Vessel Details – Moremma	
	
<b>Vessel Type / Function</b>	Pilot vessel
<b>Vessel telephone</b>	Mobile: +44 7761 825222 Sat Phone: +44 1779 400136
<b>Vessel email</b>	Paul Duxon <a href="mailto:Guardmoremma@gmail.com">Guardmoremma@gmail.com</a>
<b>Call Sign</b>	MKHC6
<b>MMSI</b>	235007170

## 7 Coordinates

Shown in Figure 1: geophysical survey area

Longitude (WGS84)	Latitude (WGS84)
2° 4' 11.934" E	53° 31' 59.257" N
2° 2' 23.543" E	53° 30' 15.738" N
2° 1' 50.468" E	53° 29' 58.631" N
2° 0' 33.397" E	53° 29' 49.809" N
1° 53' 52.525" E	53° 28' 18.157" N
1° 50' 32.418" E	53° 27' 25.643" N
1° 50' 4.603" E	53° 26' 16.707" N
1° 50' 9.650" E	53° 25' 50.340" N
1° 49' 42.825" E	53° 24' 21.903" N
1° 49' 23.732" E	53° 22' 24.944" N
1° 48' 12.983" E	53° 18' 42.747" N
1° 46' 55.840" E	53° 15' 57.068" N
1° 46' 15.908" E	53° 15' 5.007" N
1° 43' 52.746" E	53° 13' 21.546" N
1° 43' 4.402" E	53° 13' 5.062" N
1° 30' 24.338" E	53° 4' 59.121" N
1° 29' 7.766" E	53° 3' 51.755" N
1° 28' 16.431" E	53° 3' 36.966" N

Longitude (WGS84)	Latitude (WGS84)
1° 25' 12.221" E	53° 3' 39.011" N
1° 19' 27.902" E	53° 3' 4.845" N
1° 16' 21.094" E	53° 3' 6.407" N
1° 14' 17.070" E	53° 3' 34.066" N
1° 12' 23.203" E	53° 3' 23.109" N
1° 10' 14.555" E	53° 3' 19.522" N
1° 8' 33.828" E	53° 3' 30.020" N
1° 7' 6.899" E	53° 3' 32.792" N
1° 5' 45.682" E	53° 1' 51.145" N
1° 5' 29.059" E	53° 0' 19.475" N
1° 6' 24.006" E	52° 59' 10.951" N
1° 7' 34.212" E	52° 58' 23.072" N
1° 8' 4.381" E	52° 56' 59.623" N
1° 5' 48.611" E	52° 57' 23.299" N
1° 4' 20.750" E	52° 58' 24.548" N
1° 3' 13.870" E	52° 59' 46.274" N
1° 3' 4.037" E	53° 0' 14.551" N
1° 3' 26.518" E	53° 2' 16.727" N
1° 5' 6.399" E	53° 4' 24.654" N
1° 5' 34.080" E	53° 4' 46.900" N
1° 6' 6.445" E	53° 4' 57.435" N
1° 6' 45.020" E	53° 5' 0.957" N
1° 8' 49.772" E	53° 4' 56.966" N
1° 10' 20.278" E	53° 4' 47.089" N
1° 12' 8.936" E	53° 4' 50.116" N
1° 14' 26.650" E	53° 5' 2.310" N
1° 16' 47.381" E	53° 4' 32.854" N
1° 19' 19.524" E	53° 4' 32.226" N
1° 24' 58.218" E	53° 5' 6.002" N
1° 27' 30.916" E	53° 5' 4.100" N
1° 28' 35.354" E	53° 5' 56.875" N
1° 41' 29.148" E	53° 14' 11.789" N
1° 42' 14.962" E	53° 14' 27.431" N
1° 44' 10.074" E	53° 15' 49.705" N
1° 44' 37.874" E	53° 16' 25.597" N
1° 45' 50.556" E	53° 19' 1.814" N
1° 46' 57.914" E	53° 22' 33.955" N
1° 47' 6.150" E	53° 23' 43.971" N
1° 47' 42.459" E	53° 25' 56.028" N
1° 47' 37.113" E	53° 26' 27.234" N
1° 48' 5.945" E	53° 27' 30.131" N
1° 48' 7.857" E	53° 27' 57.919" N
1° 48' 24.478" E	53° 28' 19.679" N
1° 48' 59.559" E	53° 28' 36.672" N
1° 52' 57.025" E	53° 29' 39.012" N
1° 59' 44.290" E	53° 31' 12.142" N
2° 0' 36.709" E	53° 31' 19.720" N
2° 2' 12.822" E	53° 32' 51.864" N
2° 1' 46.055" E	53° 35' 5.006" N
2° 2' 1.575" E	53° 35' 28.379" N
2° 2' 37.417" E	53° 35' 46.884" N
2° 2' 46.304" E	53° 36' 47.902" N
2° 3' 8.913" E	53° 37' 14.141" N

Longitude (WGS84)	Latitude (WGS84)
2° 5' 28.452" E	53° 38' 19.584" N
2° 6' 19.862" E	53° 38' 31.038" N
2° 16' 17.662" E	53° 41' 39.572" N
2° 20' 18.541" E	53° 44' 4.728" N
2° 19' 23.907" E	53° 51' 55.147" N
2° 19' 34.653" E	53° 52' 10.866" N
2° 23' 43.613" E	53° 48' 27.115" N
2° 24' 43.628" E	53° 48' 23.274" N
2° 34' 19.781" E	53° 45' 27.296" N
2° 33' 58.967" E	53° 45' 17.430" N
2° 23' 1.918" E	53° 43' 38.549" N
2° 17' 44.552" E	53° 40' 28.657" N
2° 7' 23.515" E	53° 37' 12.216" N
2° 6' 39.277" E	53° 37' 2.480" N
2° 5' 9.581" E	53° 36' 20.389" N
2° 4' 57.552" E	53° 35' 9.595" N
2° 4' 40.677" E	53° 34' 50.588" N
2° 4' 16.626" E	53° 34' 37.908" N
2° 4' 41.213" E	53° 32' 44.612" N
2° 4' 11.934" E	53° 31' 59.257" N