

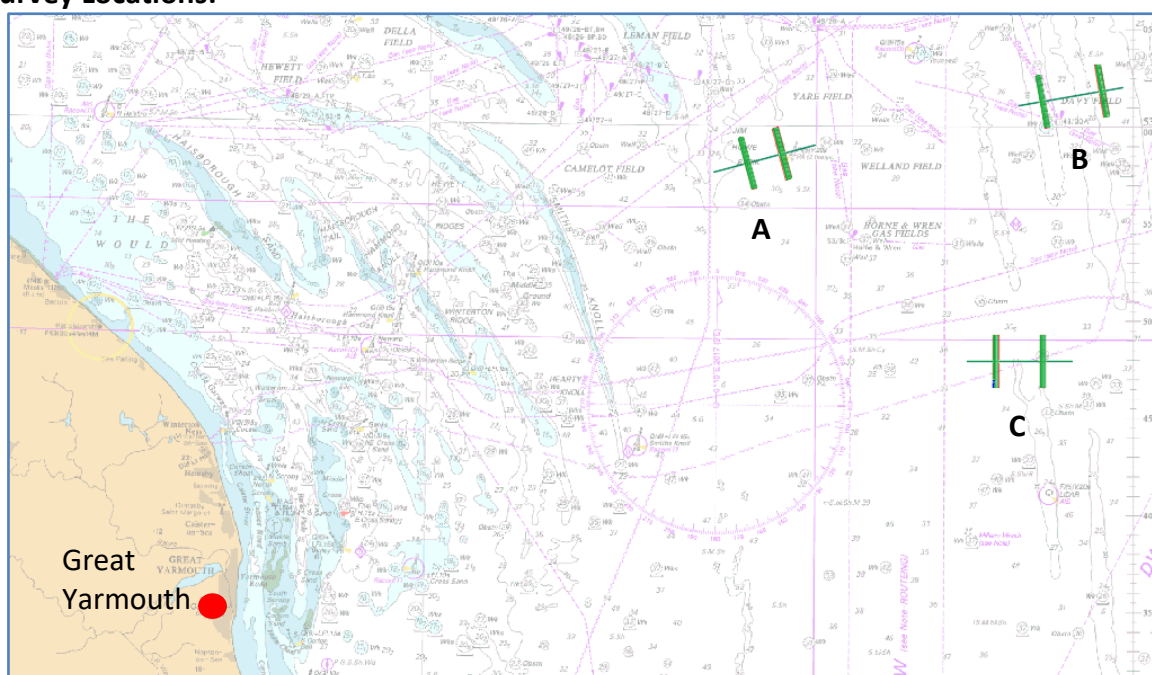
# NOTICE TO MARINERS

## BATHYMETRIC SURVEY

EGS (International) Ltd will be performing bathymetric seabed surveys at three locations in April, approximately 35 to 52 nm Northeast of Great Yarmouth, using our offshore survey vessel 'EGS Pioneer'. The three 'H-pattern' survey locations are shown in the diagram below.

The survey is likely to be conducted over a 4-to-5-day period during a period of settled weather from the beginning to mid-April 2021. The vessel will be working constantly (24 hours) each day, this survey duration may be extended if poor weather delays completion. The primary survey system will be a multibeam echosounder and the vessel will be surveying at a speed of approximately 3-4 knots. Whilst no towed systems will be deployed, the vessel will be steering along defined line plans, so please exercise caution around the vessel as significant course changes are likely.

### Survey Locations:



Coordinates (centre of each 'H-Pattern') WGS84.

- A: 52° 58.217' N 02° 28.449' E
- B: 52° 01.538' N 02° 54.692' E
- C: 53° 47.881' N 02° 50.172' E

---

**MV 'EGS Pioneer'**



**Length:** 24.4m  
**Draft:** 4.0m

**Beam:** 6.6m  
**Call sign:** 2EGS9

Enquiries regarding this notice should be directed to:

James Porter [jporter@egssurvey.co.uk](mailto:jporter@egssurvey.co.uk)

**EGS (International) Ltd**  
Woolmer Way  
Bordon  
Hampshire  
GU35 9QE  
Tel: 01420 489329



---

**Distribution List:**

Vattenfall	<a href="mailto:joseph.hine@vattenfall.com">joseph.hine@vattenfall.com</a>
Trinity House	<a href="mailto:navigation.directorate@thls.org">navigation.directorate@thls.org</a>
UKHO (NM's)	<a href="mailto:sdr@ukho.gov.uk">sdr@ukho.gov.uk</a>
The Crown Estate	<a href="mailto:consents@thecrownestate.co.uk">consents@thecrownestate.co.uk</a> <a href="mailto:Stuart.Curry@thecrownestate.co.uk">Stuart.Curry@thecrownestate.co.uk</a>
MCA	<a href="mailto:navigationsafety@mcga.gov.uk">navigationsafety@mcga.gov.uk</a> <a href="mailto:wm.yarmouth@mcga.gov.uk">wm.yarmouth@mcga.gov.uk</a> <a href="mailto:dover.coastguard@mcga.gov.uk">dover.coastguard@mcga.gov.uk</a> <a href="mailto:humber.coastguard@mcga.gov.uk">humber.coastguard@mcga.gov.uk</a>
Kingfisher Bulletin	<a href="mailto:kingfisher@seafish.co.uk">kingfisher@seafish.co.uk</a>
IFCA, Eastern Region	<a href="mailto:mail@eastern-ifca.gov.uk">mail@eastern-ifca.gov.uk</a>
NFFO	<a href="mailto:nffo@nffo.org.uk">nffo@nffo.org.uk</a>
Brown & May	<a href="mailto:sja@brownmay.com">sja@brownmay.com</a> <a href="mailto:jonathan@brownmay.com">jonathan@brownmay.com</a>
Great Yarmouth Port, Harbour Office	<a href="mailto:harbouroffice@eastportuk.co.uk">harbouroffice@eastportuk.co.uk</a> <a href="mailto:info@eastportuk.co.uk">info@eastportuk.co.uk</a>
Southwold Harbour	<a href="mailto:southwoldharbour@eastsoffolk.gov.uk">southwoldharbour@eastsoffolk.gov.uk</a>
Lowestoft Haven Marina	<a href="mailto:lowestofthaven@abports.co.uk">lowestofthaven@abports.co.uk</a>
RN&S YC	<a href="mailto:admin@rnsyc.org.uk">admin@rnsyc.org.uk</a>
Lowestoft Cruising Club	<a href="mailto:secretary@lowestoftcruisingclub.co.uk">secretary@lowestoftcruisingclub.co.uk</a>