

NOTICE TO MARINERS

Issue Date: 26th February 2021

Viking Link Project

Pre Lay Installation Rock Placement Works UK

Mariners are advised about Rock Placement Works planned for the Viking Link project which is a HVDC electricity transmission interconnector between Denmark and England, a joint venture between National Grid and Energinet.

The Rock Placement works covered by this notice are in UK waters and are planned to commence on the **12th March 2021** and be completed by early April 2021.

Rock placement is planned in areas where pre-existing cables and pipelines are crossed by the Viking Link cable route (**Table 1 and Figure 1**). The dynamic positioning system onboard will keep the vessel in position in order to progressively and accurately install the rock in the planned locations.

The Rock Placement Works are being managed by Prysmian PowerLink carried out by **DEME Boskalis JV** and planned to be carried out using **Flintstone** (IMO 9528433; Call Sign PBZD) Rock Placement vessel.

Vessels are requested to pass at a safe speed and distance and fishing vessels are advised to remain a safe distance, approximately 1000m (0.5 nautical miles) from the areas identified. During these works the vessel will have restricted maneuverability as it completes its work scope.

VHF CH 16 will be monitored at all times and will be used to contact the coastguard in the event of an emergency.

An overview of the vessel is shown in **Figure 3** below.

Table 1 –Locations for Rock Placement

Crossing Asset	ETRS89 - UTM31N		ETRS89	
	Easting (m)	Northing (m)	Latitude	Longitude
Theddlethorpe to Murdoch MD - 26" Gas PL	417898	5990847	54° 03.558'N	001° 44.740'E
Theddlethorpe to Murdoch MD - 4" Methanol Line	417881	5990859	54° 03.564'N	001° 44.724'E
Esmond to Bacton - 24" Gas PL	413561	5990093	54° 03.109'N	001° 40.778'E
Shearwater to Bacton - 34" Gas PL (SEAL)	397506	5986981	54° 01.255'N	001° 26.132'E
Babbage to West Sole - 12" Gas Export PL	381164	5973958	53° 54.025'N	001° 11.478'E
West Sole to Easington - 16" Gas PL	355799	5958680	53° 45.406'N	000° 48.762'E
West Sole to Easington - 24" Gas PL	355753	5958579	53° 45.350'N	000° 48.723'E
Amethyst C1D to Amethyst A1D - Power Cable	347317	5943700	53° 37.188'N	000° 41.491'E
Amethyst C1D to Amethyst A1D - 12" Gas PL	347291	5943649	53° 37.161'N	000° 41.469'E
Amethyst A2D to Easington - Power Cable	346890	5942281	53° 36.417'N	000° 41.146'E
Amethyst A2D to Easington - 30" Gas PL	346878	5942233	53° 36.390'N	000° 41.137'E
HOW02 NS NW	340561	5933249	53° 31.436'N	000° 35.689'E
HOW01 As-Laid Western	340643	5932887	53° 31.243'N	000° 35.773'E
HOW01 As-Laid Central	340689	5932735	53° 31.162'N	000° 35.820'E
HOW01 As-Laid Eastern	340724	5932617	53° 31.099'N	000° 35.855'E
Theddlethorpe to Murdoch MD - 26" Gas PL	326496	5917045	53° 22.439'N	000° 23.508'E
Theddlethorpe to Murdoch MD - 4" Methanol Line	326484	5917027	53° 22.430'N	000° 23.498'E
Pickerill A to Theddlethorpe - 24" Gas PL	326423	5916940	53° 22.381'N	000° 23.445'E
LOGGS PP to Theddlethorpe - 36" Gas PL	326366	5916859	53° 22.336'N	000° 23.397'E
LOGGS PP to Theddlethorpe - 4" Methanol Line	326355	5916842	53° 22.327'N	000° 23.387'E
Viking Link AR to Theddlethorpe - 28" Gas / 3" Methanol (Piggybacked)	326314	5915227	53° 21.456'N	000° 23.403'E



Figure 1: Viking Link Cable Route & working area

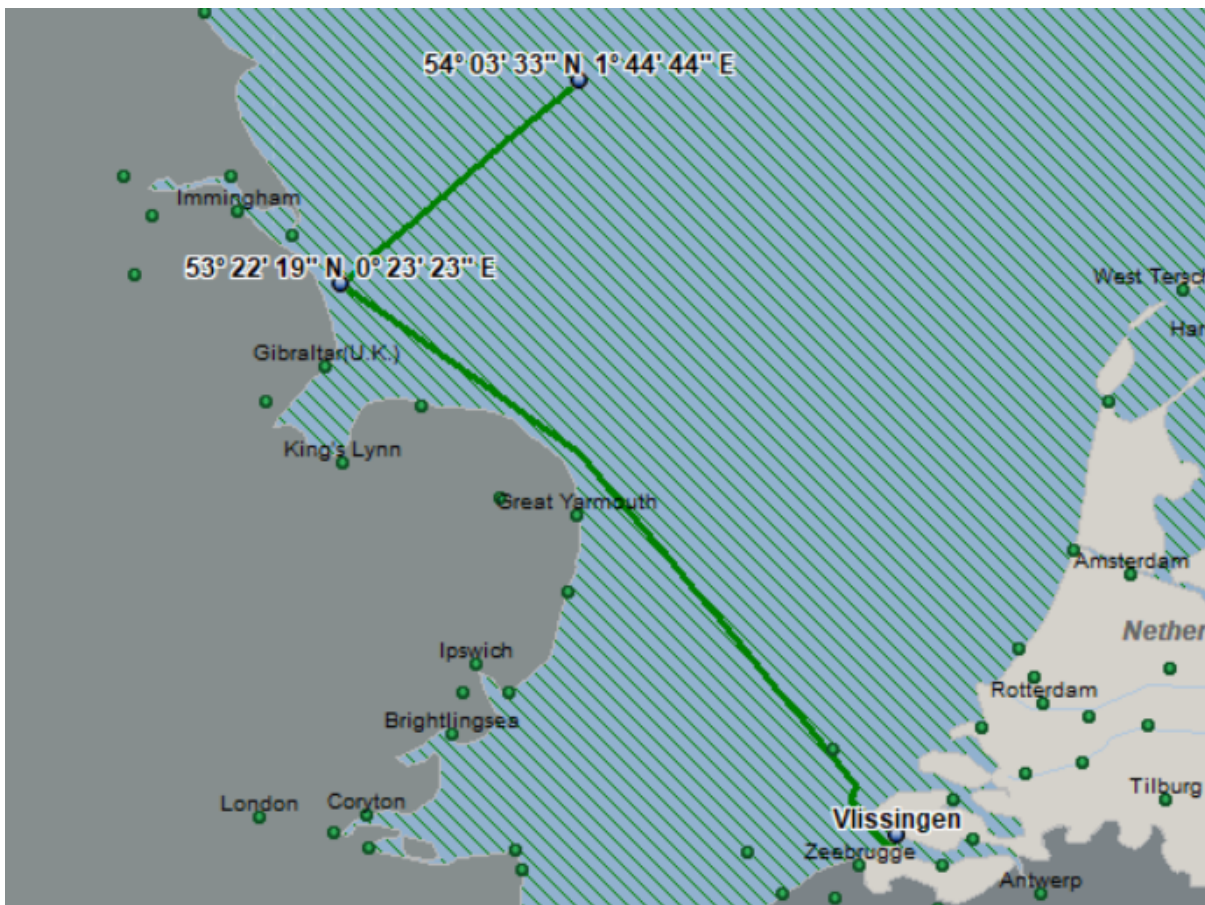


Figure 2: Approximate DFPV transit route to start and end of pre-lay scope of work, coming from Vlissingen



Figure 3: Rock Placement Works Vessel – Flintstone

Contact Details:

Further enquiries should be addressed to the following contacts:

FLO contact

Jonathan Keer

jonathan@brownmay.com

Mobile: +44 1379 872145

Freya Sandison

Freya@brownmay.com

Telephone: 01379 872145

Prysmian Project Manager

Alessandro Jared Crivelli

alessandro.crivelli@prysmiangroup.com

Mobile: +39 345 45 95 615

Prysmian Project Manager

Cian McKeown

cian.mckeown@prysmiangroup.com

Mobile: +39 366 68 89 174

DEME Boskalis JV Project Manager

Marco de Lange

De.Lange.Marco@deme-group.com

Mobile: +31 6 23 09 69 15

Master of Flintstone

captain.flintstone@ships.deme-group.com

Sat: +49 421 517 219 19 63