



# Notice to Mariners – Hornsea Project Two

## Construction Demarcation Buoy Maintenance – Vessel update 26/05/2020

### 1. INTRODUCTION

Mariners are advised that Ørsted will be carrying out routine annual maintenance of the Hornsea Project Two Offshore Wind Farm's demarcation buoys on or around 28<sup>th</sup> May 2021. Updated vessel details covering the works are provided in Section 6. The positions of the buoys current, as-laid positions are shown in Figure 1 with coordinates updated within Section 7.

### 2. AREA OF OPERATIONS

The East and West Cardinal Buoys at the RCS have been relocated. The three Construction Buoys shown in Figure 1 and the Construction Buoys shown in Figure 2 have now all been deployed and will remain on location throughout construction of the Hornsea Project Two Offshore Wind Farm.

Mariners are advised that MaxSea and Olex plotter files of the proposed works area can be provided by the Project's Commercial Fisheries Advisors at Brown and May Marine Limited and the Project's onshore fisheries liaison. Contact details are provided in Section 5 of this Notice.

Figure 1. Construction Buoy Deployment Locations

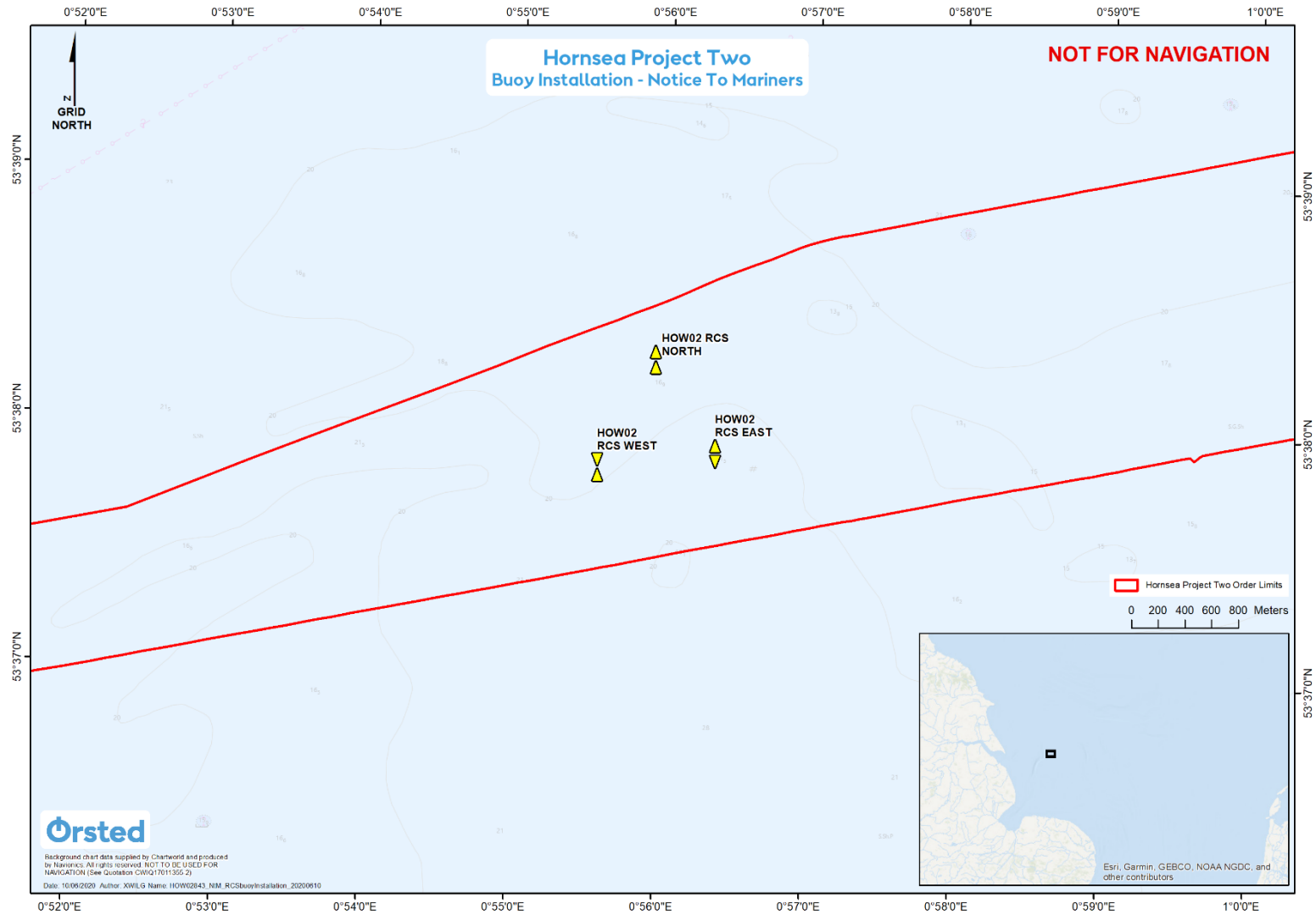
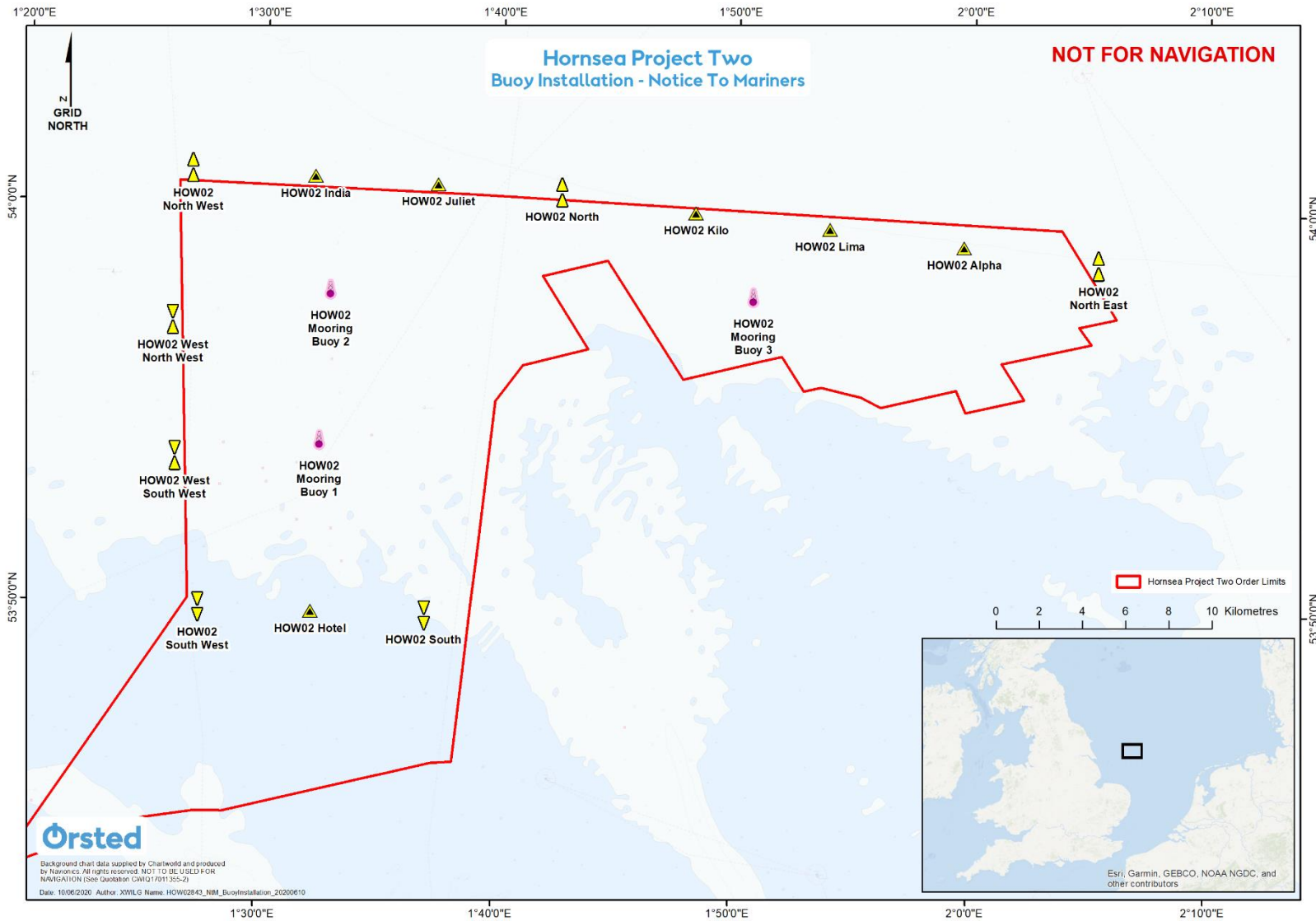


Figure 2. Construction Buoy Deployment Locations



### 3. COMPLETED ACTIVITIES

Please be advised that Trinity House Lighthouse Services will be carrying out routine annual maintenance of the Hornsea Project Two construction demarcation buoys on behalf of Ørsted with the THV Patricia on or around 28<sup>th</sup> May 2021. The vessels used to conduct the works and their respective scope, are listed in Section 6 of this NtM.

Note that the Construction Buoys will remain on location throughout construction of the Hornsea Project Two Offshore Wind Farm until 2022 and mariners should take note of their presence.

#### 3.1 Safety

It is requested that anybody having knowledge of any potential objects submerged or moored on the seabed within the works area that could be damaged or form a hazard to the vessel and its equipment advises the Project's Fishing Industry Liaison of their position and nature.

### 4. IMMEDIATE CONTACTS

The contents of this notice are based upon our current understanding of Project Two requirements.

Enquiries regarding the contents of this Notice to Mariners or any other matters should be directed to:

<b>Offshore Operations Manager (Ørsted)</b> (Office hours only)	Bradley Matthew Ashton	
	Tel: +44 (0)7557 752962	E-mail: <a href="mailto:BRAAS@orsted.co.uk">BRAAS@orsted.co.uk</a>
<b>Onshore Designated Person (Trinity House)</b> (Office hours only)	<a href="mailto:Sophie.Platten@trinityhouse.co.uk">Sophie.Platten@trinityhouse.co.uk</a>	
	Tel: + 44 (0)1255 245044	E-mail: <a href="mailto:Sophie.Platten@trinityhouse.co.uk">Sophie.Platten@trinityhouse.co.uk</a>

### 5. FISHERIES LIAISON

Onshore Fisheries Liaison is provided by Nick Garside and Sophie Farenden who can be contacted on:

E-mail: <a href="mailto:nick.garside@live.co.uk">nick.garside@live.co.uk</a>	Mob: +44 (0) 7538 827013
Email: <a href="mailto:sophie.farenden@brownmay.com">sophie.farenden@brownmay.com</a>	Mob: +44 (0)7525 128344


An Offshore Fisheries Liaison Officer is on board the Emswind Guard Vessel contactable on VHF channel 16, if required.

In the event the Onshore Fisheries Liaison is not contactable please direct fisheries enquiries related to the works to the Ørsted Company Fisheries Liaison Officer:

Company Fisheries Liaison Officer – Courtney French	Tel: +44 (0)7796 447372	E-mail: <a href="mailto:CONFR@orsted.co.uk">CONFR@orsted.co.uk</a>
--	-------------------------	--

## 6. VESSELS

Operations will be conducted by the vessel list as provided below. Additional vessels may mobilise to site as required. Contact can be made directly with the vessels, where necessary, using the contact details listed below. This Notice will be updated with further contact details once confirmed.

<b>Vessel Name: THV Patricia</b>	
	
© Michael Thomas MarineTraffic.com	
<b>Vessel Type / Function</b>	Buoy-Laying Vessel
<b>Vessel telephone</b>	Mobile: +44(0)7836 235756
<b>Vessel email</b>	Thv.Patricia@thls.org
<b>Call Sign</b>	GBTH
<b>MMSI</b>	232647000

## 7. COORDINATES

<b>NamePlate</b>	<b>Longitude (DMS)</b>	<b>Latitude (DMS)</b>	<b>Longitude (DDM)</b>	<b>Latitude (DDM)</b>
HOW02 North West	1° 26' 52.646" E	54° 0' 50.538" N	1° 26.877' E	54° 0.842' N
HOW02 North	1° 42' 32.666" E	54° 0' 23.718" N	1° 42.544' E	54° 0.395' N
HOW02 North East	2° 5' 19.346" E	53° 58' 45.018" N	2° 5.322' E	53° 58.750' N
HOW02 West South West	1° 26' 20.666" E	53° 53' 38.718" N	1° 26.344' E	53° 53.645' N
HOW02 West North West	1° 26' 9.146" E	53° 57' 2.478" N	1° 26.152' E	53° 57.041' N
HOW02 South	1° 37' 0.866" E	53° 49' 46.158" N	1° 37.014' E	53° 49.769' N
HOW02 South West	1° 27' 26.546" E	53° 49' 52.338" N	1° 27.442' E	53° 49.872' N
HOW02 India	1° 32' 5.546" E	54° 0' 41.538" N	1° 32.092' E	54° 0.692' N
HOW02 Juliet	1° 37' 18.386" E	54° 0' 32.538" N	1° 37.306' E	54° 0.542' N
HOW02 Kilo	1° 48' 14.426" E	53° 59' 55.818" N	1° 48.240' E	53° 59.930' N

NamePlate	Longitude (DMS)	Latitude (DMS)	Longitude (DDM)	Latitude (DDM)
HOW02 Lima	1° 53' 56.126" E	53° 59' 34.398" N	1° 53.935' E	53° 59.573' N
HOW02 Alpha	1° 59' 37.766" E	53° 59' 9.678" N	1° 59.629' E	53° 59.161' N
HOW02 Hotel	1° 32' 13.526" E	53° 49' 49.218" N	1° 32.225' E	53° 49.820' N
HOW02 Mooring Buoy 1	1° 32' 26.803" E	53° 53' 59.556" N	1° 32.447' E	53° 53.993' N
HOW02 Mooring Buoy 2	1° 32' 48.494" E	53° 57' 45.433" N	1° 32.808' E	53° 57.757' N
HOW02 Mooring Buoy 3	1° 50' 42.939" E	53° 57' 44.087" N	1° 50.716' E	53° 57.735' N
HOW02 RCS North	0° 55' 56.186" E	53° 38' 16.158" N	0° 55.936' E	53° 38.269' N
HOW02 RCS East	0° 56' 21.399" E	53° 37' 53.849" N	0° 56.357' E	53° 37.897' N
HOW02 RCS West	0° 55' 33.600" E	53° 37' 49.800" N	0° 55.560' E	53° 37.830' N