



Notice to Mariners – Hornsea Project Two

Notice of Intertidal Works Update – Beach setup updated details - 06/05/2021

1. INTRODUCTION

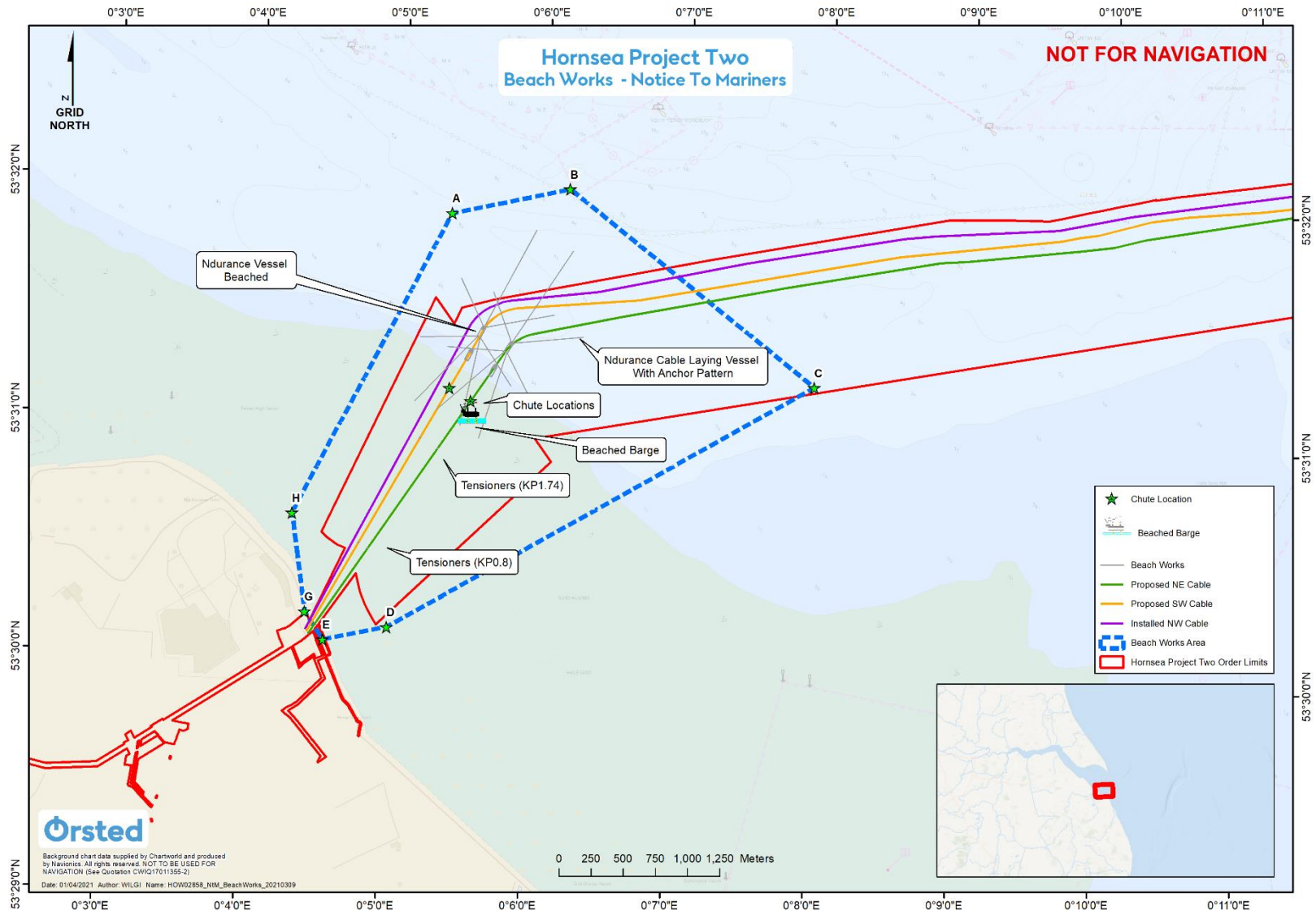
Mariners are advised that Ørsted are continuing export cable installation works in the intertidal area as part of the ongoing construction of the Hornsea Project Two Offshore Wind Farm. The export cable pull has been completed and the cable is exposed on the intertidal area prior to cable burial works commencing. The Maagd will also be leaving site on or around the 10th May 2021 and returning approximately 2 weeks later.

2. AREA OF OPERATIONS

Activities being carried out within the Hornsea Project Two Offshore Wind Farm Order Limits (intertidal area) as shown in Figure 1 will be carried out in 2021. Mariners are advised that MaxSea and Olex plotter files of the proposed works area can be provided by the Project's Commercial Fisheries Advisors at Brown and May Marine Limited and the Project's onshore fisheries liaison. Contact details are provided in Section 5 of this Notice.

Note that these works will be carried out alongside ongoing survey operations using the MHO Grimsby which is currently on site, as well as other seabed preparation and installation activities for Hornsea Project Two, covered under separate NtMs.

Figure 1. Proposed Works Area



3. PROPOSED ACTIVITIES

3.1 Landfall Preparation and Cable Installation

Please be advised that the second of three export cable pull-ins is complete and the SW cable (yellow, central circuit shown in Figure 1) is exposed on the beach prior to burial works commencing. The Maagd will be leaving site on or around 10th May 2021 and returning approximately 2 weeks later. In addition to this export cable installation activities in the intertidal area are ongoing at the landfall at Horseshoe Point, Lincolnshire and will continue until approximately 30th September 2021. Works will be continual and intermittent throughout these periods.

It should be noted that export cable seabed preparation and installation seaward of mean low water springs is ongoing until end of 2021.

3.2 Safety

It is requested that anybody having knowledge of any potential objects submerged or moored on the seabed within the works area that could be damaged or form a hazard to the vessel and its equipment advises the Project's Fishing Industry Liaison of their position and nature.

4. IMMEDIATE CONTACTS

The contents of this notice are based upon our current understanding of Project Two requirements. A further notice will be issued when works are complete.

Enquiries regarding the contents of this Notice to Mariners or any other matters should be directed to:

Project Manager (Ørsted) (Office hours only)	Richard Irving	
	Tel: +44 78 5 4276523	E-mail: ricir@orsted.co.uk
Project Manager (Boskalis) (Office hours only)	Steve Marshall	
	Tel: +44 7970 750 385	E-mail: steve.marshall@boskalis.com

5. FISHERIES LIAISON

Onshore Fisheries Liaison is provided by Nick Garside and Sophie Farenden who can be contacted on:

E-mail: nick.garside@live.co.uk	Mob: +44 (0) 7538 827013
Email: sophie.farenden@brownmay.com	Mob: +44 (0)7525 128344


An Offshore Fisheries Liaison Officer is onboard the Emswind Guard Vessel contactable on VHF channel 16, if required.

In the event the Offshore or Onshore Fisheries Liaison is not contactable please direct fisheries enquiries related to the works to the Ørsted Company Fisheries Liaison Officer:

Company Fisheries Liaison Officer – Courtney French	Tel: +44 (0)7796 447372	E-mail: CONFR@orsted.co.uk
--	-------------------------	--

6. VESSELS

Operations will be conducted by a number of vessels as provided below. Additional vessels may mobilise to site as required. Contact can be made directly with the vessels, where necessary, using the contact details listed below. This Notice will be updated with further contact details once confirmed. Client and contractor contact details are provided in Section 4 and 5 of this NtM.

Vessel Details – Ndurance	
	
Vessel Type / Function	Cable installation and burial
Vessel telephone	+31 65 109 0370 +31 10 713 0548 (V-sat)
Vessel email	ndurance-captain@boskalis.com
Call Sign	5BVH3
MMSI	209851000

Vessel Details – Coastal Vanguard	
	
Vessel Type / Function	AHT
Vessel telephone	VSat +3185 009 0212 Mobile +31682656179
Vessel email	vanguard@coastalworkboats.com
Call Sign	PCFH
MMSI	356286000

Vessel Details – Voe Vanguard	
 <p>© David Meek MarineTraffic.com</p>	
Vessel Type / Function	Anchor Handling Tug
Vessel telephone	VSAT: 881 631 448 600 Mobile: +44 7766 798 481
Vessel email	voevanguard@deltamarine.scot
Call Sign	MBEN9
MMSI	232008636

Vessel Details – Lingestroom



Vessel Type / Function	AHT
Vessel telephone	+31 (0) 184 78 8128 +31 (0) 612 44 1220
Vessel email	Lingestroom@wijngaarden.com
Call Sign	PICW
MMSI	244016000

Vessel Contact Details – Maagd



Vessel / Type / Function	Landfall transportation barge
Vessel telephone	n/a
Vessel email	n/a
Call Sign	n/a
MMSI	n/a

Vessel Details – Titan Endeavour



Vessel Type / Function	Nearshore Survey
Vessel telephone	+44 (0)7867 552553
Vessel email	Titan.Endeavour@titansurveys.com
Call Sign	2ELT9
MMSI	235086211

7. COORDINATES

Label	Longitude	Latitude
A	0° 5' 21.384" E	53° 31' 53.349" N
B	0° 6' 10.746" E	53° 32' 0.488" N
C	0° 7' 56.983" E	53° 31' 12.986" N
D	0° 5' 0.585" E	53° 30' 8.467" N
E	0° 4' 33.802" E	53° 30' 4.701" N
G	0° 4' 25.737" E	53° 30' 11.575" N
H	0° 4' 18.813" E	53° 30' 36.297" N

Beach barge location:

Easting (m):	Northing (m):	Latitude (DDM)	Longitude (DDM)
306974.9	5933576.1	53° 30.937' N	0° 5.317' E