

NOTICE TO MARINERS

DOGGER BANK OFFSHORE WIND FARM

DATE OF ISSUE:	05/05/2021
NOTICE TO MARINER NUMBER	LF600013-MIP-DOG-NOT-0004rev01

DBB South – Pilot Drill Multi Beam Echo Sounder (MBES) Survey

LOCATION DESCRIPTION		Bridlington Bay, approximately 1400m from shore in the Dogger Bank B export cable corridor
COORDINATES WGS 84	LATITUDE DDM	54° 00.274'N
	LONGITUDE DDM	000° 11.452'W
START DATE/TIME		06 th May 2021
ESTIMATED END DATE/TIME		13 th May 2021 (One day operation)

Description of Hazard/Operation

Operating out of Bridlington harbour, the MV Pulsar will conduct a Multi Beam Echo Sounder (MBES) survey of the pilot drilling head and the seabed at and around the horizontal directional drill (HDD) exit point of the DBB export cable. This will include multiple survey passes over the exit point. The survey will be a one-day operation starting early morning. Weather limitations are:

Wave height -0.5m, Wind Speed – 6m/s.

MV Pulsar will have survey equipment deployed into the water, pole mounted on the vessel's port side and will be travelling at 2-4kts during the survey operation. The vessel will display lights and shapes appropriate to the operation.

Contact Details

MARINE COORDINATION CONTACT	John Bray John.bray@sse.com
FLO CONTACT	John Watt- Brown & May Marine Ltd John.watt@brownmay.com Tel: 01379 870181 Mob: 07590880746
CONTRACTOR CONTACT	Ross Smith – NKT Ross.smith@nkt.com Mob: 07999 030808
VESSEL CONTACT - MV PULSAR	C/S: 2FBX2. MMSI: 235089965 Mob: 07858 456352 / 07879 881739

NOTICE TO MARINERS

Supporting Information



Fig 1 MV Pulsar

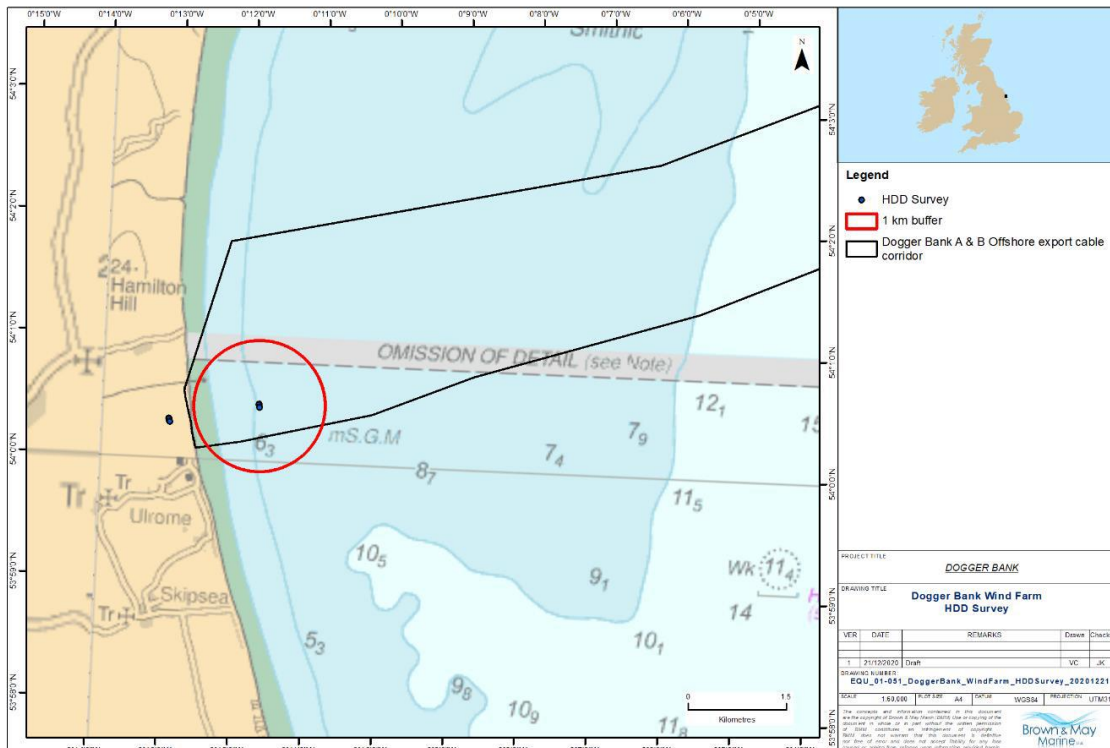


Fig 2 Location Chart