

# NOTICE TO MARINERS

## DOGGER BANK OFFSHORE WIND FARM

DATE OF ISSUE:	09/06/2021
NOTICE TO MARINER NUMBER	LF500013-MIP-DOG-NOT-0009

### Dogger Bank Nearshore Intervention Works

LOCATION DESCRIPTION		Bridlington Bay, approximately 1400m from shore in the Dogger Bank A&B export cable corridor
COORDINATES  WGS 84	LATITUDE DDM	54° 00.444'N
	LONGITUDE DDM	000° 11.751'W
START DATE/TIME		14 <sup>th</sup> June 2021
ESTIMATED END DATE/TIME		24 <sup>th</sup> June 2021

### Description of Hazard/Operation

The backhoe dredger **Capall Mara** will be carrying out dredging activities to form two pre-cut trenches for DBA and DBB cable route corridors using the on-board backhoe dredger. Spoil management to ensure soil heaps don't reduce the water depth will be conducted. The vessel will be manned and remain on site during the night.

The cabin RHIB, **Celtic Mara** will be carrying out Multi Beam Echo Sounder (MBES) surveys of the seabed and along the pre-cut trenches throughout the dredging activities. The survey gear will be positioned on a side mounted pole and extended into the water. Celtic Mara will make several passes over the area at a reduced speed. The Celtic Mara will transit daily from Bridlington Harbour to the Capall Mara throughout the project.

Both vessels will be restricted in their ability to manoeuvre during their respective operations. They will display the appropriate day shapes and lights. Passing vessels are requested to maintain a 500m safety distance from both vessels during operations, reducing speed to minimise wake disturbance.


### Contact Details

MARINE COORDINATION CONTACT	John Bray <a href="mailto:John.bray@sse.com">John.bray@sse.com</a>
FLO CONTACT	John Watt- Brown & May Marine Ltd <a href="mailto:John.watt@brownmay.com">John.watt@brownmay.com</a> Tel: 01379 870181 Mob: 07590880746
CONTRACTOR CONTACT	Ross Smith – NKT <a href="mailto:Ross.smith@nkt.com">Ross.smith@nkt.com</a> Mob: 07999 030808

# NOTICE TO MARINERS

## Supporting Information

Vessel Name - Capall Mara	Vessel Contact Details	
	Call Sign	MBSF3
	MMSI	232010652
	IMO	9696307
	VHF Channel	16 & 70
	Mobile Number	+44 7711 498 085
	Email	N/A
	Vessel Details	
	Length	39.60m
	Breadth	13.98m
	Draft	2.4m
	Year Built	2013
	Other Information	
	Backhoe Dredger.	

Vessel Name – Celtic Mara	Vessel Contact Details	
	Call Sign	2GLP3
	MMSI	235098447
	IMO	N/A
	VHF Channel	16 & 70
	Mobile Number	+44 7464 014 090
	Email	N/A
	Vessel Details	
	Length	11m
	Breadth	3.4m
	Draft	0.8m
	Year Built	2013
	Other Information	
	Humber/Quinquari RHIB- MCA Cat 3.	
	Crew Transfer Vessel.	
MBES Survey Vessel.		

# NOTICE TO MARINERS

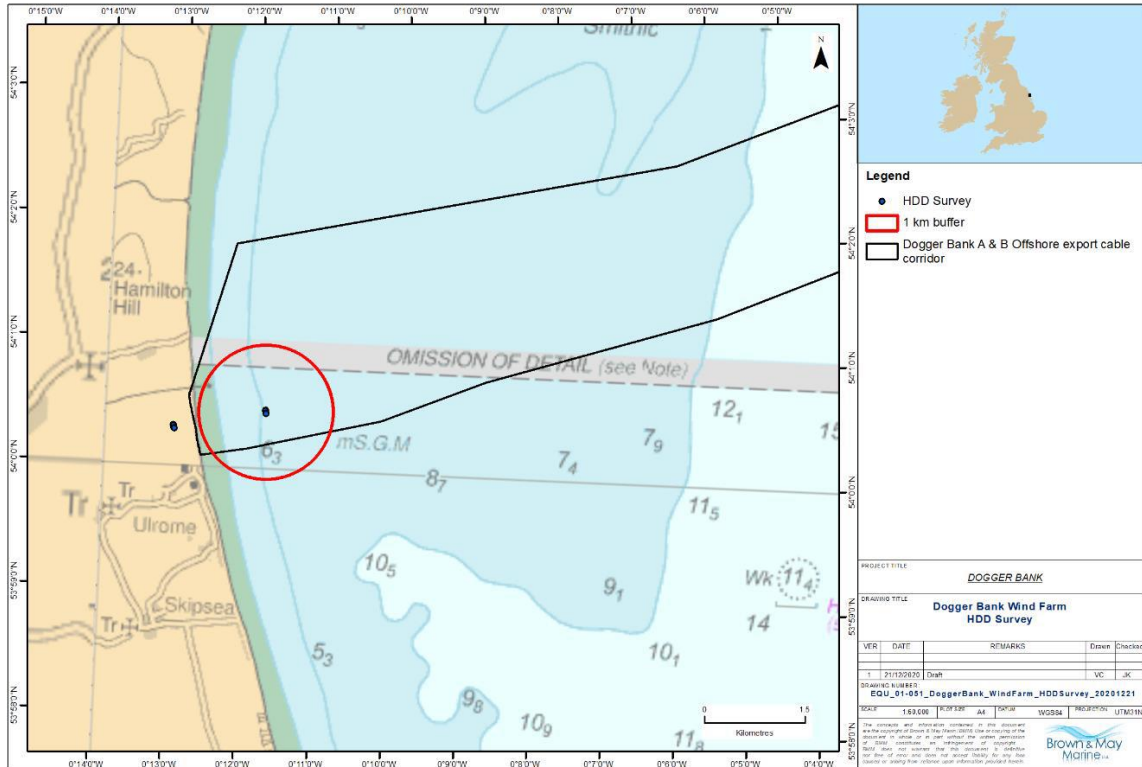


Fig 1 Location Chart

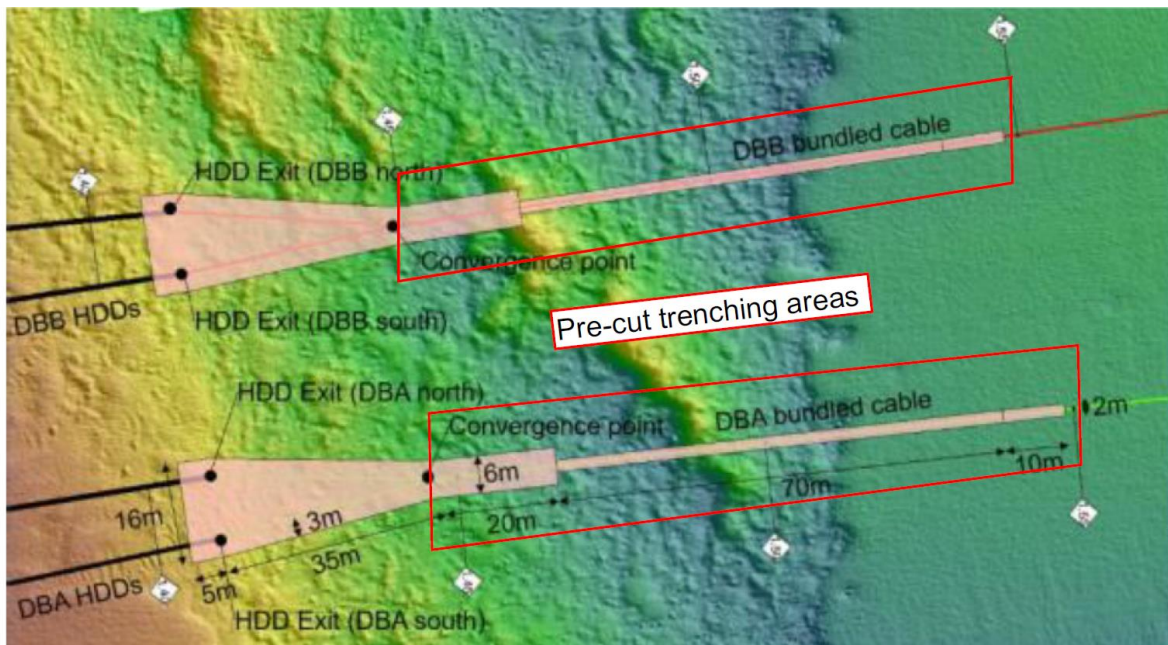


Fig 2 Diagram of the Pre-cut trenching areas