

NOTICE TO MARINERS

Issue Date: 30th April 2021

VIKING LINK Project

HVDC Mattressing Work

Mariners are advised about landfall works at Boygriff, Lincolnshire (English Landfall) planned for the Viking Link project which is an HVDC electricity transmission interconnector between Denmark and England, a joint venture between National Grid and Energinet. The works include cable lay and burial works operations.

HVDC mattressing cable protection installation are planned to take place from:

- Babbage 10th May –22nd May 2021
- Hornsea 27th May – 1st June 2021

The route length of the main HVDC interconnection (2x bundles power cables + 1x Fibre Optic Cable) is in the order of 620km. The work covered by this NtM are within the UK side covering the first two cable campaigns starting from the UK the landfall at Boygriff.

The works covered within this Notice to Mariners are divided in the following activities:

- Cable mattressing protection

The mattressing works are being carried out by:

Asso Subsea using Atalanti (IMO 8661616; Call Sign 5BYY2).

Vessel and contact details are given in **Table 1** below.

Vessels are requested to pass at a safe speed and distance and fishing vessels are advised to remain a safe distance, approximately 550m (0.3 nautical miles) from the areas identified. During these works the vessel will have restricted manoeuvrability as it completes its work scope. Deployed Guard Vessels will monitor the exposed areas of cable while burial progresses and advise of safe distances locally.

VHF CH 16 will be monitored at all times and will be used to contact the coastguard in the event of an emergency.

Vessel Name	Vessel Photograph	Vessel Details
Cable Laying Barge as Support Vessel – “Atalanti”		MMSI: 212279000 Call Sign: 5BYY2

Table 1: Work vessel details

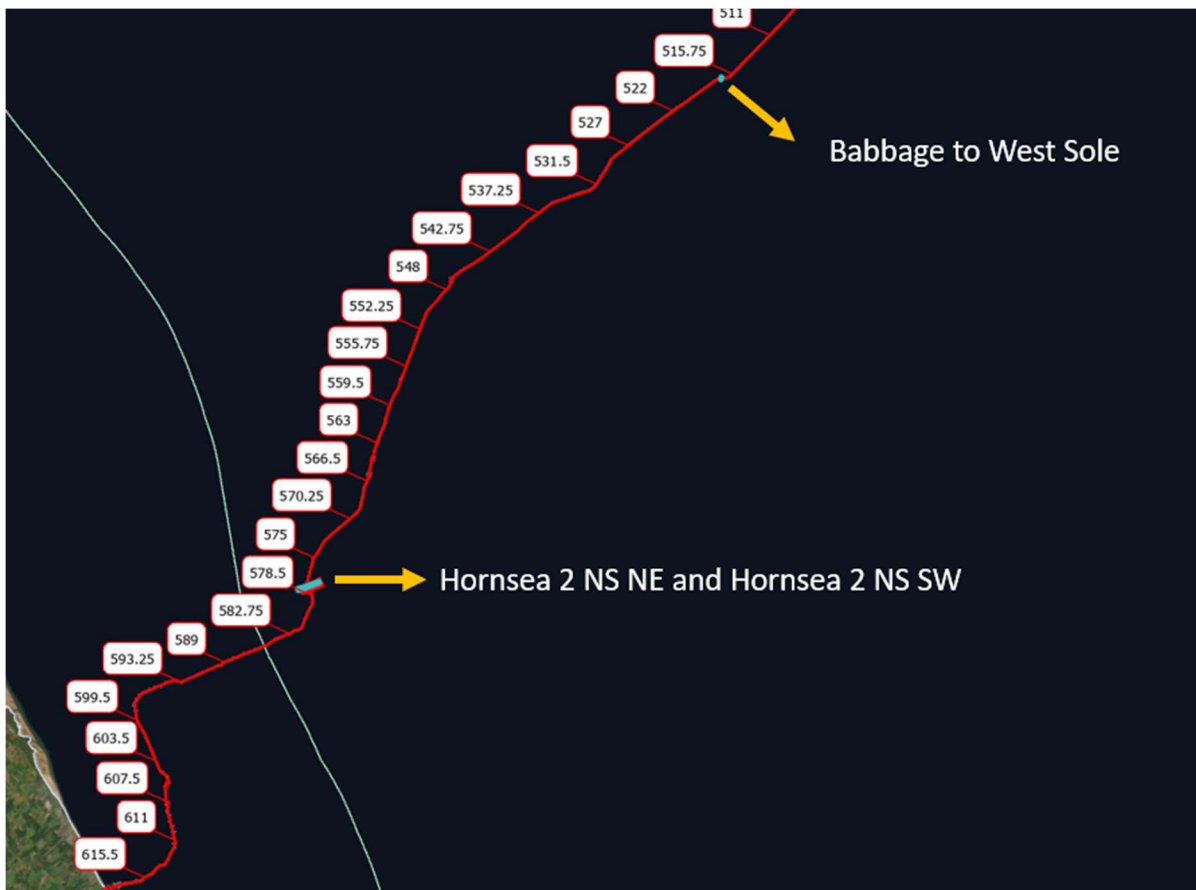


Figure 1: Overview of the Viking Link Interconnector area of work



Figure 2: CLB “Atalanti” Transit Route and Passage Plan

Works overview

At service crossings the method of protection agreed has been the use of concrete matting. Therefore, along the first cable lay campaign, matting will be placed on the Viking HVDC cable at the Hornsea 2 crossing interface and matting will be placed before the cable lay at the Babbage crossing.

Where cable burial is not possible (due to service crossings and / or where seabed conditions are unfavourable), guard vessels will remain on site.

CROSSING ASSET	KP RPL_INST_1 geodetic	ETRS 1989 UTM 31N		ETRS89		WD LAT (m)	WD MSL (m)
		Easting [m]	Northing [m]	Latitude	Longitude		
HOW02 NS NE	577.654	340610	5933012	53° 31.309'N	000° 35.740'E	17.7	21.7
HOW02 NS SW	577.557	340591	5933107	53°31,360'N	000°35,719'E	17.3	21.3
Babbage Export to West Sole	516.869	381164	5973958	53° 54.025'N	001° 11.478'E	33.8	36.6

Table 2: Locations for the Service Crossing

Contact Details:

Further enquiries should be addressed to the following contacts:

FLO contact

Jonathan Keer

jonathan@brownmay.com

Mobile: +44 7850 604851

Freya Sandison

freya@brownmay.com

Mobile: +44 7857 500609

Prysmian Project Manager

Alessandro Jared Crivelli

alessandro.crivelli@prysmiangroup.com

Mobile: +39 345 45 95 615

Prysmian Project Manager

Matteo Borselli

matteo.borselli@prysmiangroup.com

Mobile: +39 338 65 41 587

ASSO Offshore Team Manager

Lampros Merkouris

lmerkouris@assogroup.com

Mobile: +30 211 888 5102

Vessel Master of Atalanti

atalanti@assogroup.com

Mobile: +30 6958 469 697