



Notice to Mariners – Hornsea Project Two

Construction Demarcation Buoy Relocation 03/08/2021

1. SUMMARY OF OPERATIONS

Activity update:	Relocation of Construction Demarcation Buoys
General activity:	Construction – Hornsea Project Two Offshore Wind Farm
Location:	Reactive Compensation Station (RCS) (as shown in Figure 1, coordinates provided in Section 6)
Carried out by:	Trinity House Lighthouse Services on behalf of Ørsted
Updated vessels:	None (vessel details provided in Section 5)
Proposed start date:	7 th August 2021
Proposed end date:	7 th August 2021
Notes:	These works will be carried out alongside ongoing survey and construction activities for Hornsea Project Two.

Mariners are advised that MaxSea and Olex plotter files of the proposed works area can be provided by the Project's Commercial Fisheries Advisors at Brown and May Marine Limited and the Project's onshore fisheries liaison. Contact details are provided in Section 4 of this Notice.

2. HAZARDS AND SAFETY

It is requested that anybody having knowledge of any potential objects submerged or moored on the seabed within the works area that could be damaged or form a hazard to the vessel and its equipment advises the Project's Fishing Industry Liaison of their position and nature.

The Construction Buoys shown in Figure 1 & Figure 2 will remain on location throughout construction of the Hornsea Project Two Offshore Wind Farm.

Note that the Construction Buoys will remain on location throughout construction of the Hornsea Project Two Offshore Wind Farm until 2022 and mariners should take note of their presence.

Figure 1. Proposed Construction Buoy Relocated Positions

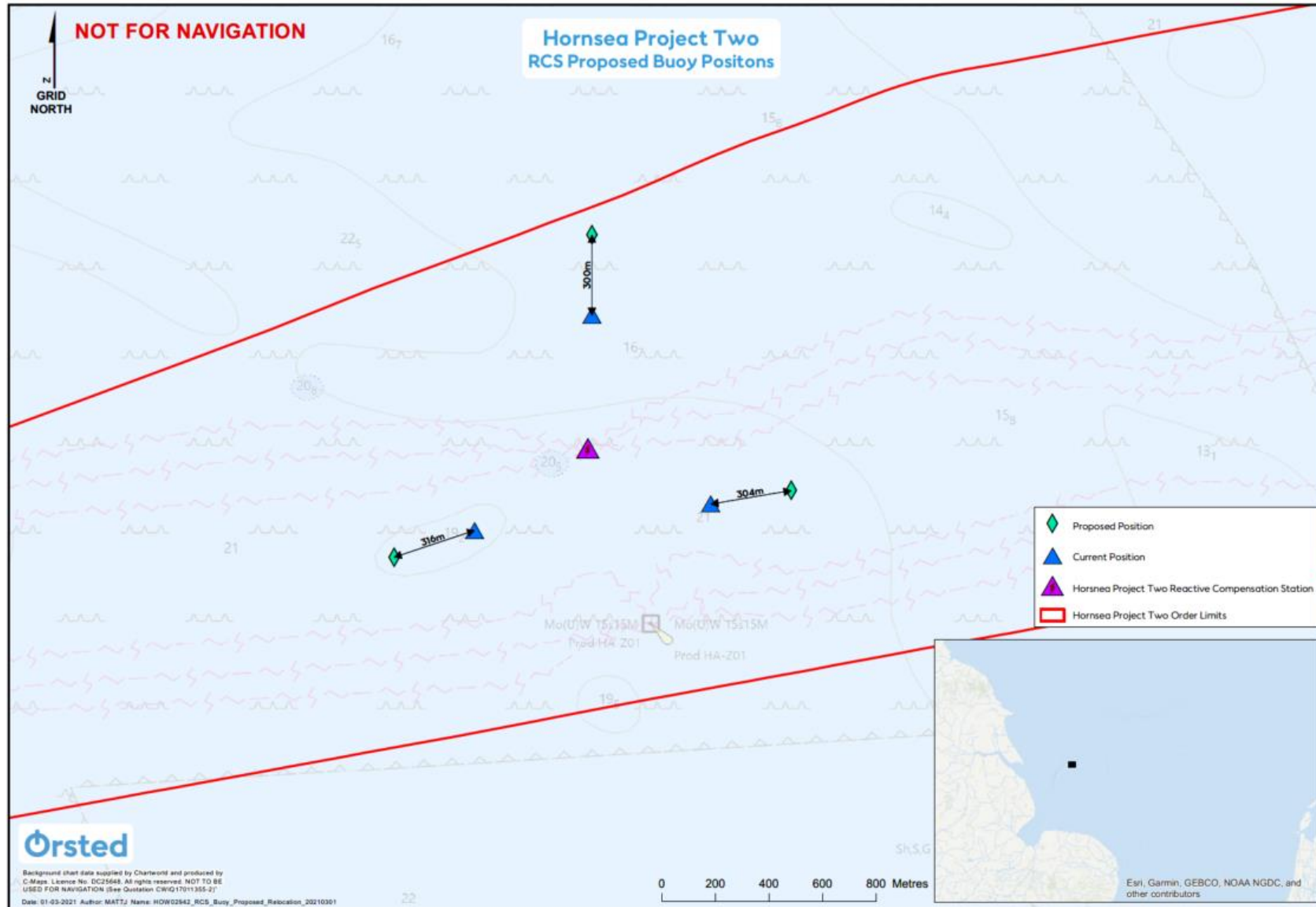
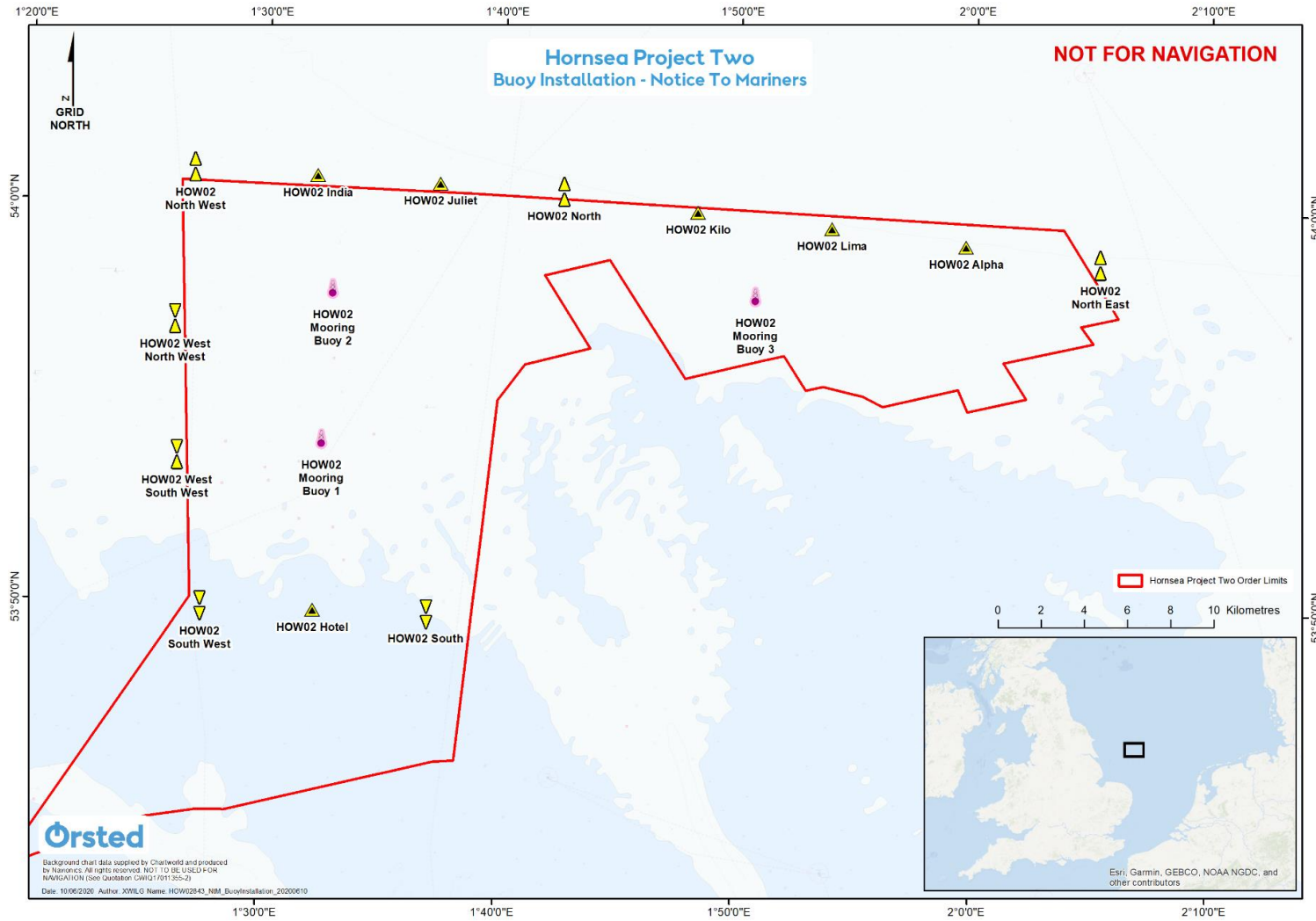


Figure 2. Construction Buoy Deployment Locations



3. IMMEDIATE CONTACTS

The contents of this notice are based upon our current understanding of Project Two requirements.

Enquiries regarding the contents of this Notice to Mariners or any other matters should be directed to:

Offshore Operations Manager (Ørsted) (Office hours only)	Bradley Matthew Ashton	
	Tel: +44 (0)7557 752962	E-mail: BRAAS@orsted.co.uk
Onshore Designated Person (Trinity House) (Office hours only)	Sophie.Platten@trinityhouse.co.uk	
	Tel: + 44 (0)1255 245044	E-mail: Sophie.Platten@trinityhouse.co.uk

4. FISHERIES LIAISON

Onshore Fisheries Liaison is provided by Nick Garside and Sophie Farenden who can be contacted on:

E-mail: nick.garside@live.co.uk	Mob: +44 (0) 7538 827013
Email: sophie.farenden@brownmay.com	Mob: +44 (0)7525 128344


An Offshore Fisheries Liaison Officer is on board the Emswind and Resilient Guard Vessel contactable on VHF channel 16, if required.

In the event the Onshore Fisheries Liaison is not contactable please direct fisheries enquiries related to the works to the Ørsted Company Fisheries Liaison Officer:

Company Fisheries Liaison Officer – Courtney French	Tel: +44 (0)7796 447372	E-mail: CONFR@orsted.co.uk
--	-------------------------	--

5. VESSELS

Operations will be conducted by the vessel list as provided below. Additional vessels may mobilise to site as required. Contact can be made directly with the vessels, where necessary, using the contact details listed below. This Notice will be updated with further contact details once confirmed.

Vessel Name: THV Patricia	
 <p>© Michael Thomas MarineTraffic.com</p>	
Vessel Type / Function	Buoy-Laying Vessel
Vessel telephone	Mobile: +44(0)7836 235756
Vessel email	Thv.Patricia@thls.org
Call Sign	GBTH
MMSI	232647000

6. COORDINATES

Figure 1 – RCS Construction Buoy Relocation

NamePlate	Proposed new position			
	Longitude (DMS)	Latitude (DMS)	Longitude (DDM)	Latitude (DDM)
HOW02 RCS North	0° 55' 55,685" E	53° 38' 25,841" N	0° 55.929'E	53° 38.431'N
HOW02 RCS East	0° 56' 37,663" E	53° 37' 55,718" N	0° 56.628'E	53° 37.929'N
HOW02 RCS West	0° 55' 17,438" E	53° 37' 46,283" N	0° 55.291'E	53° 37.772'N

Figure 2 – Array Construction Buoys

NamePlate	Longitude (DMS)	Latitude (DMS)	Longitude (DDM)	Latitude (DDM)
HOW02 North West	1° 26' 52.646" E	54° 0' 50.538" N	1° 26.877' E	54° 0.842' N
HOW02 North	1° 42' 32.666" E	54° 0' 23.718" N	1° 42.544' E	54° 0.395' N
HOW02 North East	2° 5' 19.346" E	53° 58' 45.018" N	2° 5.322' E	53° 58.750' N

NamePlate	Longitude (DMS)	Latitude (DMS)	Longitude (DDM)	Latitude (DDM)
HOW02 West South West	1° 26' 20.666" E	53° 53' 38.718" N	1° 26.344' E	53° 53.645' N
HOW02 West North West	1° 26' 9.146" E	53° 57' 2.478" N	1° 26.152' E	53° 57.041' N
HOW02 South	1° 37' 0.866" E	53° 49' 46.158" N	1° 37.014' E	53° 49.769' N
HOW02 South West	1° 27' 26.546" E	53° 49' 52.338" N	1° 27.442' E	53° 49.872' N
HOW02 India	1° 32' 5.546" E	54° 0' 41.538" N	1° 32.092' E	54° 0.692' N
HOW02 Juliet	1° 37' 18.386" E	54° 0' 32.538" N	1° 37.306' E	54° 0.542' N
HOW02 Kilo	1° 48' 14.426" E	53° 59' 55.818" N	1° 48.240' E	53° 59.930' N
HOW02 Lima	1° 53' 56.126" E	53° 59' 34.398" N	1° 53.935' E	53° 59.573' N
HOW02 Alpha	1° 59' 37.766" E	53° 59' 9.678" N	1° 59.629' E	53° 59.161' N
HOW02 Hotel	1° 32' 13.526" E	53° 49' 49.218" N	1° 32.225' E	53° 49.820' N
HOW02 Mooring Buoy 1	1° 32' 26.803" E	53° 53' 59.556" N	1° 32.447' E	53° 53.993' N
HOW02 Mooring Buoy 2	1° 32' 48.494" E	53° 57' 45.433" N	1° 32.808' E	53° 57.757' N
HOW02 Mooring Buoy 3	1° 50' 42.939" E	53° 57' 44.087" N	1° 50.716' E	53° 57.735' N