

Ørsted - East Coast Operational Assets

Notice to Mariners

Period of Notice: June 2021

Version: Issue 6

Table of Contents

1	Introduction	3
1.1	Subsea Cables	4
1.2	Wind Farm Positional Data	4
2	Key Contacts	4
3	Notice to Mariners Summary:	5
4	Race Bank – Notice to Mariners	6
4.1	Lighting and Marking Status	6
4.2	Other Operations	6
4.3	Piggyback rectification work	6
5	Westermose Rough – Notice to Mariners	6
5.1	Lighting and Marking Status	6
5.2	Other Operations	6
6	Lincs – Notice to Mariners	7
6.1	Lighting and Marking Status	7
6.2	Other Operations	7
6.2.1	LS51 & LS75 Gearbox Exchange	7
6.2.2	Blade repair	10
7	Gunfleet Sands – Notice to Mariners	11
7.1	Lighting and Marking Status	11
7.2	Other Operations	11
7.2.1	Transition Piece Maintenance (paint campaign).	11
7.2.2	Seabed survey	12
8	Hornsea One – Notice to Mariners	13
8.1	Lighting and Marking Status	13
8.2	Other Operation	13
8.2.1	Post construction Survey	13

1 Introduction

Ørsted is an offshore wind farm owner and operator with ten operational wind farms in UK waters. Of these ten, the following offshore wind farms are located off the East Coast of England:

- Gunfleet Sands
- Westernmost Rough
- Race Bank
- Lincs
- Hornsea One

The purpose of this monthly Notice to Mariners (NtM) is to ensure that mariners are aware of any non-routine operations across the East Coast assets that could pose a risk to other sea users. Safety is paramount to Ørsted and this notice should assist in ensuring that both mariners and the Ørsted operational team can operate safely offshore. This NtM will provide:

- A regular, clear and consistent overview of non-routine operations
- Updates relating to lighting and marking
- Key contact details
- Access to detailed site information and figures
- Clarity on when Safety Zones and recommended safe separation distances are in force or requested



This Notice to Mariners will not provide:

- Information relating to routine maintenance carried out by Crew Transfer Vessels (CTV) or Service Operation Vessels (SOV).
- Any information relating to export cables
- Any information relating to offshore wind farms currently in development, construction or not operated by Ørsted

Subsea Cables

Subsea cables are installed across each offshore wind farm and are marked on the KIS ORCA charts referenced in Section 1.2. Please note the following advice from NP 100 The Mariners Handbook “Every care should be taken to avoid anchoring, trawling, fishing, dredging, drilling, or carrying out any other activity in the vicinity of cables which might damage them.” This warning is repeated on all admiralty charts.

Wind Farm Positional Data

KIS ORCA Awareness Charts (including the layout and coordinates) and Fishing Plotter Files of the offshore assets referenced in this NtM can be found via the KIS ORCA website: <http://www.kis-orca.eu/downloads#.XWUTQUxFwjZ>. Should mariners require further information or any data in a format that can be used in a plotter or other device, please contact the Company Fisheries Liaison Officer, listed in Section 2 below.

2 Key Contacts

For further information on any of the activities listed within this notice, please use the contact details listed below.

Site	Ørsted Mailbox/ Offshore Coordination	Fisheries Industry Representative
Race Bank	Phone: 07826 943808 Email: rowoffshorec@orsted.co.uk	Ady Woods Phone: 07468 898948 Email: firwoods@hotmail.com
Westermost Rough	Phone: 07867 674941 Email: wmroffshorec@orsted.co.uk	Guy Pasco Phone: 07880 362082 Email: guy@seascopefisheries.co.uk
Lincs	Phone: 07766443319 Email: lincsoffshorec@orsted.co.uk	Ady Woods Phone: 07468 898948 Email: firwoods@hotmail.com
Gunfleet Sands		Merlin Jackson Phone: 07989 520484 Email: merlinjackson@btinternet.com
Hornsea One	Phone: 07775005465 Email: HOWoffshoreC@orsted.co.uk	Nick Garside Phone: 07538 827013 Email: nick.garside@live.co.uk

Company Fisheries Liaison Officer

The Ørsted Company Fisheries Liaison Officer can be contacted using the details below:

Courtney French
Email: CONFR@Orsted.co.uk

3 Notice to Mariners Summary:

Site	Lighting and Marking Status	Survey	Jack-Up Vessel	Other Works
Race Bank	OK	Yes	None	Piggyback campaign
Westermose Rough	OK	None	None	None
Lincs	OK	None	None	LS51 & LS75 Gearbox Exchange * °, Blade repair
Gunfleet Sands	OK	Yes	None	TP paint campaign°
Hornsea One	A13 & P01 marine lanterns not working	Yes	Yes	Post Construction Survey ***

* Formal 500m safety zone in place

° Licensable activity

** 500m safety distance requested

*** 200m safety distance requested

4 Race Bank – Notice to Mariners

4.1 Lighting and Marking Status

The lighting and/ or navigational warning systems are currently operational. No planned outages.

4.2 Other Operations

4.3 Piggyback rectification work

On the 10th June the Eden Rose will be on site to conduct some WTG internal repairs. The scope is expected to last until mid-August and will be across the full wind farm.

Vessel information

General Information		Vessel Picture
Name	Eden Rose	
Flag	UK	
Year Built	2012	
MMSI Number	235092732	
Call Sign	2FNN5	
Vessel Contact Details		
Bridge	Master (TBC)	
Party Chief	07852 125057	
Email	edenrose@tidal-transit.com	

5 Westermost Rough – Notice to Mariners

5.1 Lighting and Marking Status

The lighting and/ or navigational warning systems are currently operational. No planned outages.

5.2 Other Operations

N/A

6 Lincs – Notice to Mariners

6.1 Lighting and Marking Status


The lighting and/ or navigational warning systems are currently operational. No planned outages.


6.2 Other Operations

6.2.1 LS51 & LS75 Gearbox Exchange

Exchange of gearbox's at LS51 and LS75, expected on Lincs Windfarm 11th for a duration of 10 days weather permitting. The Jack Up Vessel Wind Pioneer will be operating a 500m Safety Zone for the duration of the works at LS51 and LS75.

Vessel Information

General Information		Vessel Picture
Name	Wind Pioneer	
Flag	Danish	
Year Built	2010	
MMSI Number	219017684	
Call Sign	OWLA2	
Vessel Contact Details		
Bridge	+45 21822180	
Party Chief	Master on Wind Pioneer	
Email	Master.windpioneer@ziton.eu	

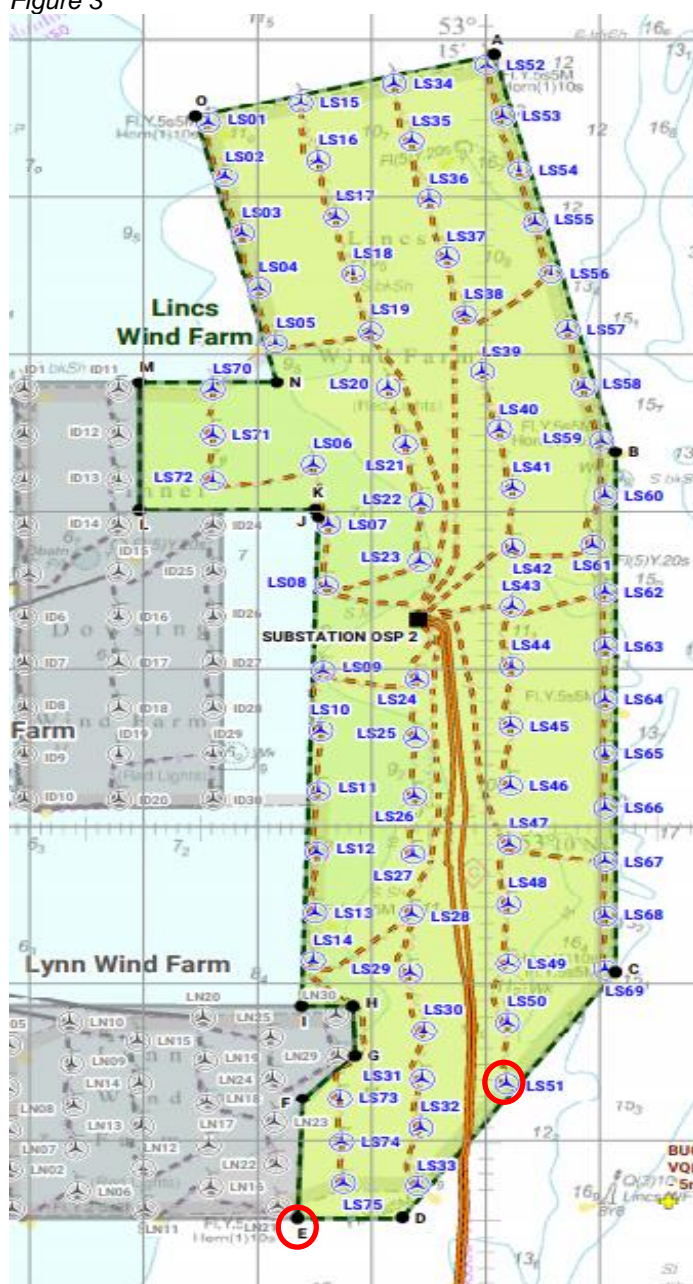
General Information		Vessel Picture
Name	HST Grace	
Flag	UK	
Year Built	2013	
MMSI Number	235095835	
Call Sign	2GAS7	
Vessel Contact Details		
Bridge	Master	
Party Chief	+44 (0) 7538162973	
Email	Grace@hst-marine.com	

© Kim Collinson
MarineTraffic.com

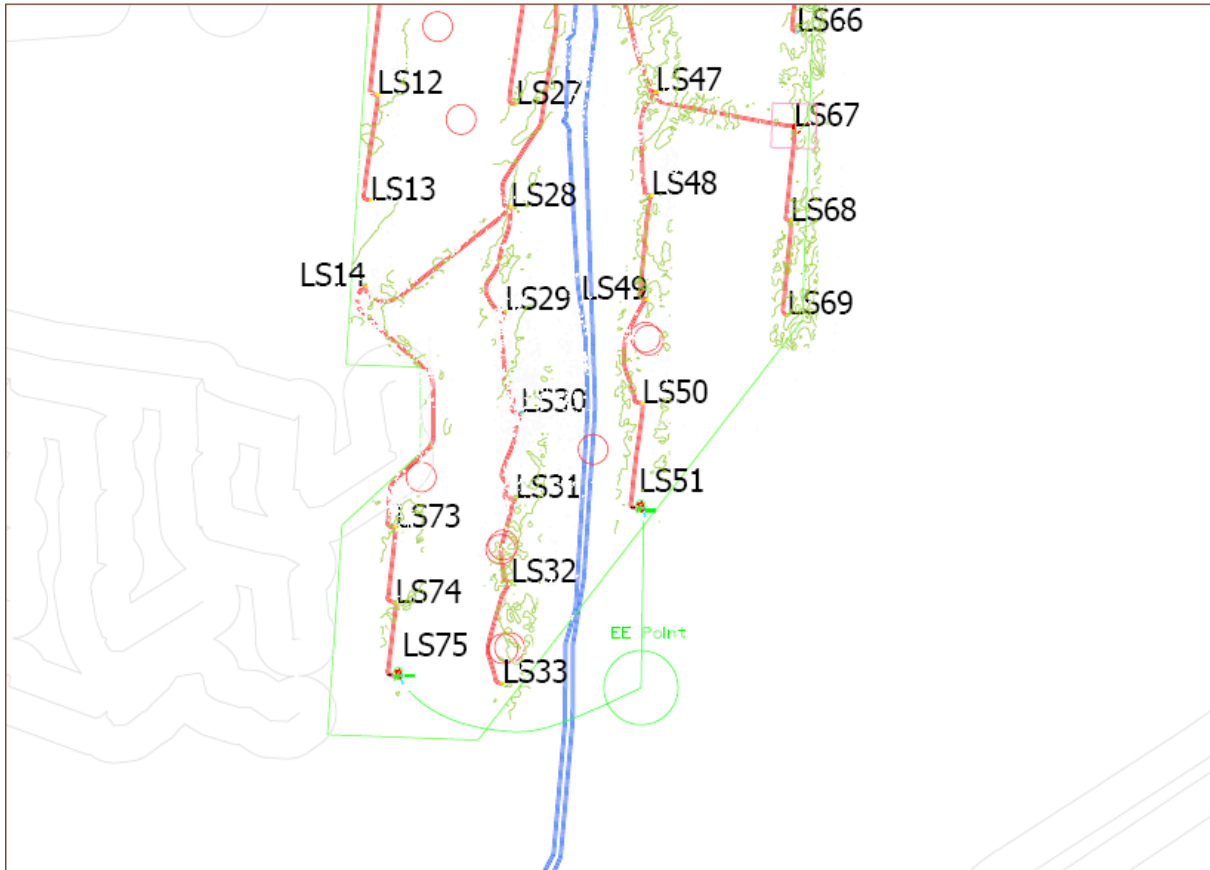
Table 2

WTG ID	Degrees, Decimal Minutes	
	Latitude	Longitude
LS51	53°08.365'N	00°30.183'N
LS75	53°07.726'N	00°28.754'N

Figure 3



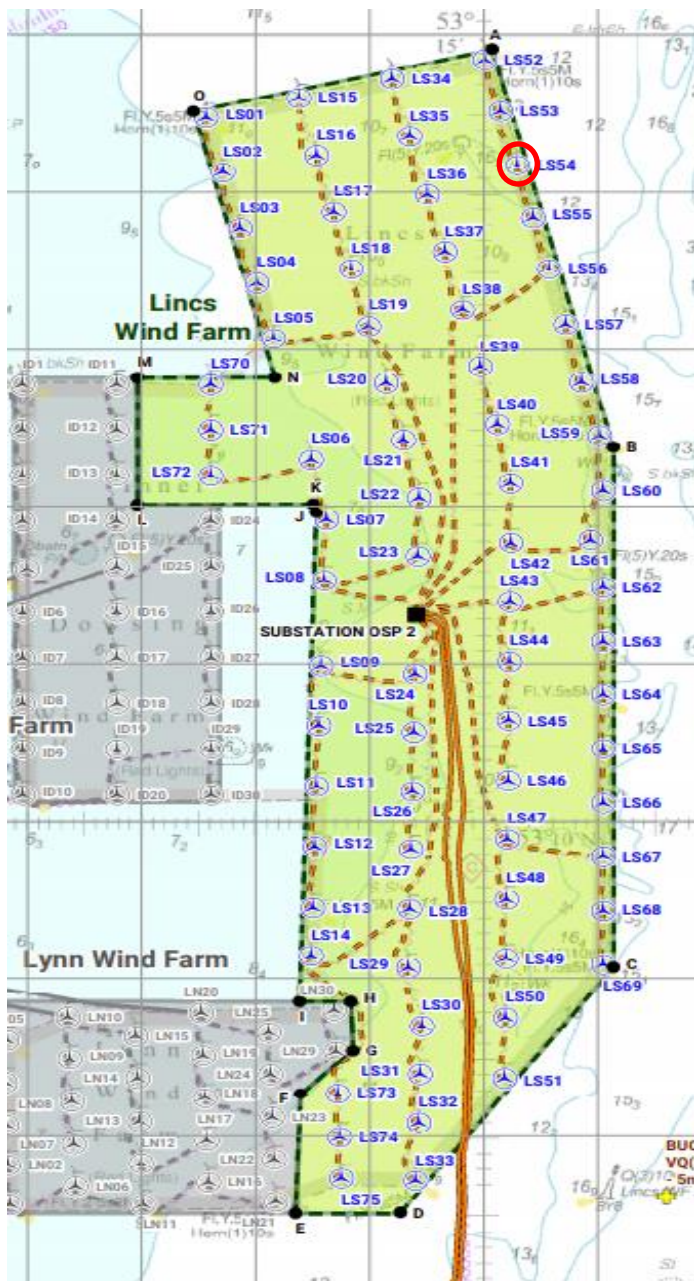
Entry Points



6.2.2 Blade repair

On the 12th July, we will be carrying out a blade repair on LS54 shown below. A 200m exclusion zone will be required for the duration of the works, it is anticipated at being completed by the 16th July. One of the site CTV's will be used for this work.

Figure 4



7 Gunfleet Sands – Notice to Mariners

7.1 Lighting and Marking Status

The lighting and/ or navigational warning systems are currently operational. No planned outages.

7.2 Other Operations

7.2.1 Transition Piece Maintenance (paint campaign).

Transition Piece maintenance will be undertaken on all WTG's on GFS01 + GFS02 from the 22nd March for a provisional 3 months. Sequence of locations and dates are unavailable as works will be weather dependant and coordinated to ensure no conflict with routine maintenance operations.

We request Mariners observe a safe distance from the affected turbine(s) while works are being carried out.

The CTV "WEM 1" will act as Guard Vessels during the maintenance programme with the vessel broadcasting the Turbine ID, establishment/cancellation of the safety zones and seeking contact with marine traffic approaching or nearing the areas on VHF Channel 16 and 12.

Vessel Information

General Information		Vessel Picture
Name	Wem 1	
Flag	United Kingdom	
Year Built	2018	
MMSI Number	232013884	
Call Sign		
Vessel Contact Details		
Bridge	+44 (0) 7944 886553	
Party Chief		
Email	wem1@windenergymarine.com	

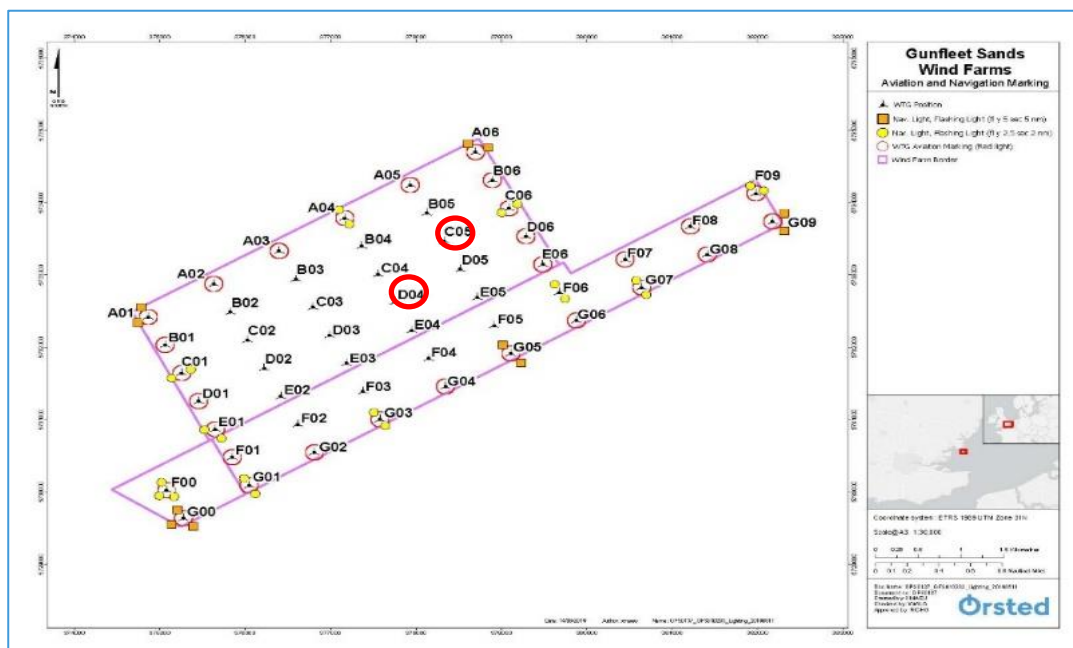
7.2.2 Seabed survey

On the 28th June the vessel Spectrum Nyquist will be conducting a 300m x 300m survey around locations C05 & D04 identified below.

Vessel Information

General Information		Vessel Picture
Name	Spectrum Nyquist	
Flag	UK	
Year Built	2010	
MMSI	232031312	
Call Sign	MIIG4	
Vessel Contact Details		
Bridge	+44 (0)7803 031728	
Party Chief	TBD	
Email	+44 (0)7803 031728	

WTG ID	Degrees, Decimal Minutes	
	Latitude	Longitude
C05	51°44.334'N	01°14.267'E
D04	51°43.876'N	01°13.790'E



8 Hornsea One – Notice to Mariners

8.1 Lighting and Marking Status

A13 & P01's marine lanterns are currently inoperative, they will be repaired at the next available opportunity. No planned outages.

8.2 Other Operation


8.2.1 Post construction Survey

We have ongoing Post construction surveys within the Hornsea One Offshore Windfarm and the array cable to shore. The Breaker is currently onsite conducting the survey (02/02/2021) with the Deep Seapal expected to arrive 1 week later.

Planned duration is for 14 days with surveys conducted around WTG's and as close to shore as the vessel can go

Vessel Information

General Information		Vessel Picture
Name	Breaker	
Flag	Panama	
Year Built	1956	
MMSI Number	371150000	
Call Sign	HP-4641	
Vessel Contact Details		
Bridge	+31 61 536 7813	
Party Chief	Rein Ritsema. +31 61 515 5713	
Email	Breakersurvey57@gmail.com	

General Information		Vessel Picture
Name	Deep Seapal	
Flag	United Kingdom	
Year Built		
MMSI Number	235089472	
Call Sign	2EZU7	
Vessel Contact Details		
Bridge	+31 61 322 1213	
Party Chief	Tom Colston +31 61 248 0212	

Email deepseapal@deepbv.nl



Survey Area

