

NOTICE TO MARINERS

DOGGER BANK OFFSHORE WIND FARM

DATE OF ISSUE:	22/06/2021
NOTICE TO MARINER NUMBER	LF500013-MIP-DOG-NOT-0010

Dogger Bank A & B Benthic Survey Works

LOCATION DESCRIPTION		Dogger Bank A & B inter array cable areas	
COORDINATES WGS 84	DBA array area	54°39.557'N 001°58.617'E 54°44.501'N 001°37.973'E 54°50.114'N 001°38.014'E 54°50.305'N 002°10.464'E 54°48.522'N 002°13.640'E 54°39.557'N 001°58.617'E	
	DBB array area	54°52.258'N 0001°28.433'E 54°58.080'N 001°29.327'E 54°58.320'N 001°29.302'E 55°4.471'N 001°30.330'E 55°4.688'N 001°33.473'E 55°6.018'N 001°40.388'E 55°6.129'N 001°51.299'E 54°51.554'N 001°51.712'E 54°52.258'N 001°28.434'E	
START DATE/TIME		25 th June 2021	
ESTIMATED END DATE/TIME		22 nd July 2021	

Description of Hazard/Operation

Dogger Bank Project will be carrying out an ecological survey of the Dogger Bank A & B inter array cable areas.

The work will be carried out by the dive support vessel **DSV Curtis Marshall** using a benthic grab sampler from the stern of the vessel. The operation will be 24hrs a day.

During the operations the vessel will be restricted in its ability to manoeuvre and will display the appropriate day shapes and lights. Passing vessels are requested to maintain a minimum 500m safety distance from **DSV Curtis Marshall** during operations, reducing speed to minimise wake disturbance.


Contact Details

MARINE COORDINATION CONTACT	John Bray John.bray@sse.com
FLO CONTACT	Stephen Appleby - Brown & May Marine Ltd sja@brownmay.com Mob: 07590 880746

NOTICE TO MARINERS

	Zoë Lawrence - Brown & May Marine Ltd zoe@brownmay.com Mob: 07887 777001
CONTRACTOR CONTACT	Craig Barrett +44 2392 205 558 Peter Falkner +44 7342 085 066

Supporting Information

Vessel Name – DSV Curtis Marshall	Vessel Contact Details	
	Call Sign	2HWN3
	MMSI	235107219
	IMO	9775012
	VHF Channel	16 & 70
	Bridge Mob:	+44 1642843050
	Email	
	Vessel Details	
	Length	27m
	Breadth	7.7m
	Draft	2.8m
Year Built	1998	
Other Information		
Dive Support /Survey Vessel		

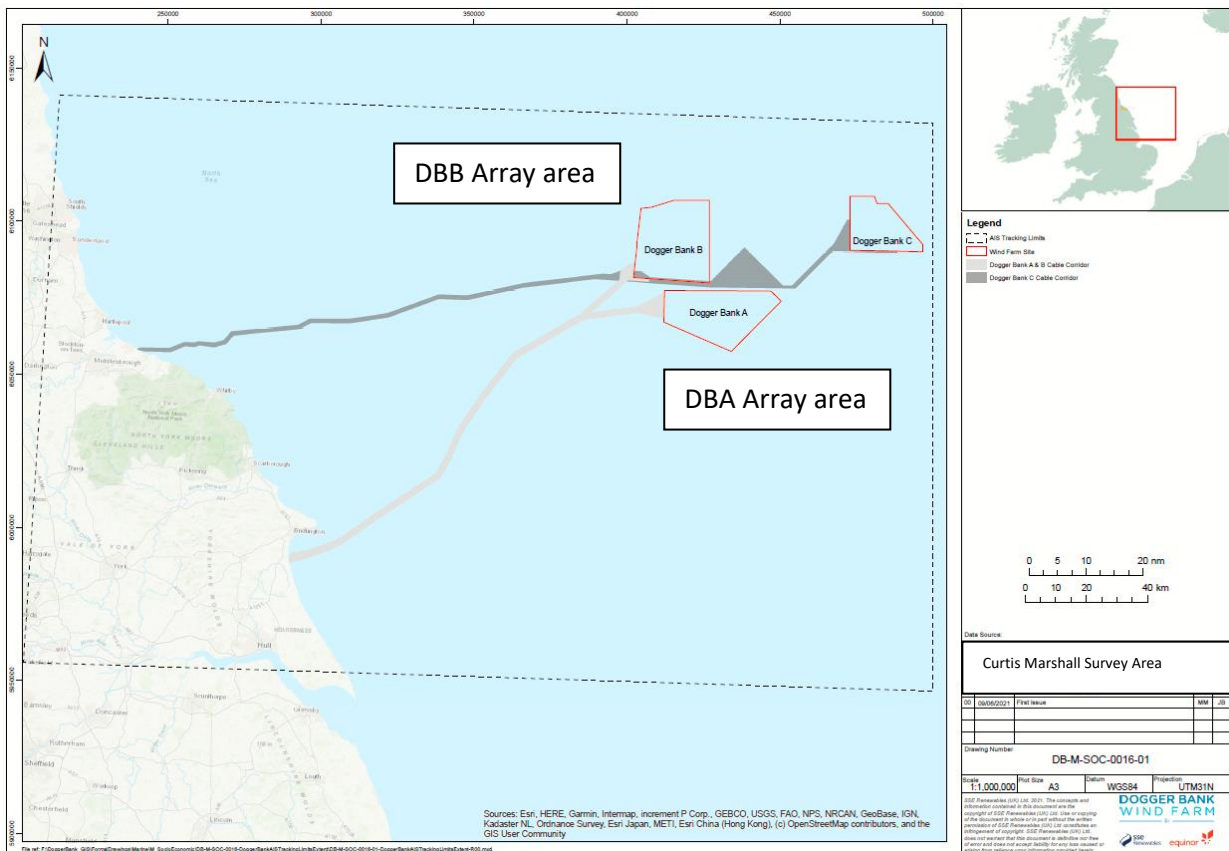


Fig 1 Location Chart Curtis Marshall survey areas