

# LYNN AND INNER DOWSING OFFSHORE WIND FARMS

## Notice to Mariners

July 2021

### Scope of Works – Major Component Replacements

Lynn and Inner Dowsing (LID) Offshore Wind Farm wish to advise mariners that the Jack Up vessel Wind Enterprise is planned to commence works within the boundary of the wind farm on 19th July 2021.

The duration of the work scope is planned to be no longer than 10 days subject to weather conditions.

The wind turbine location is as below:

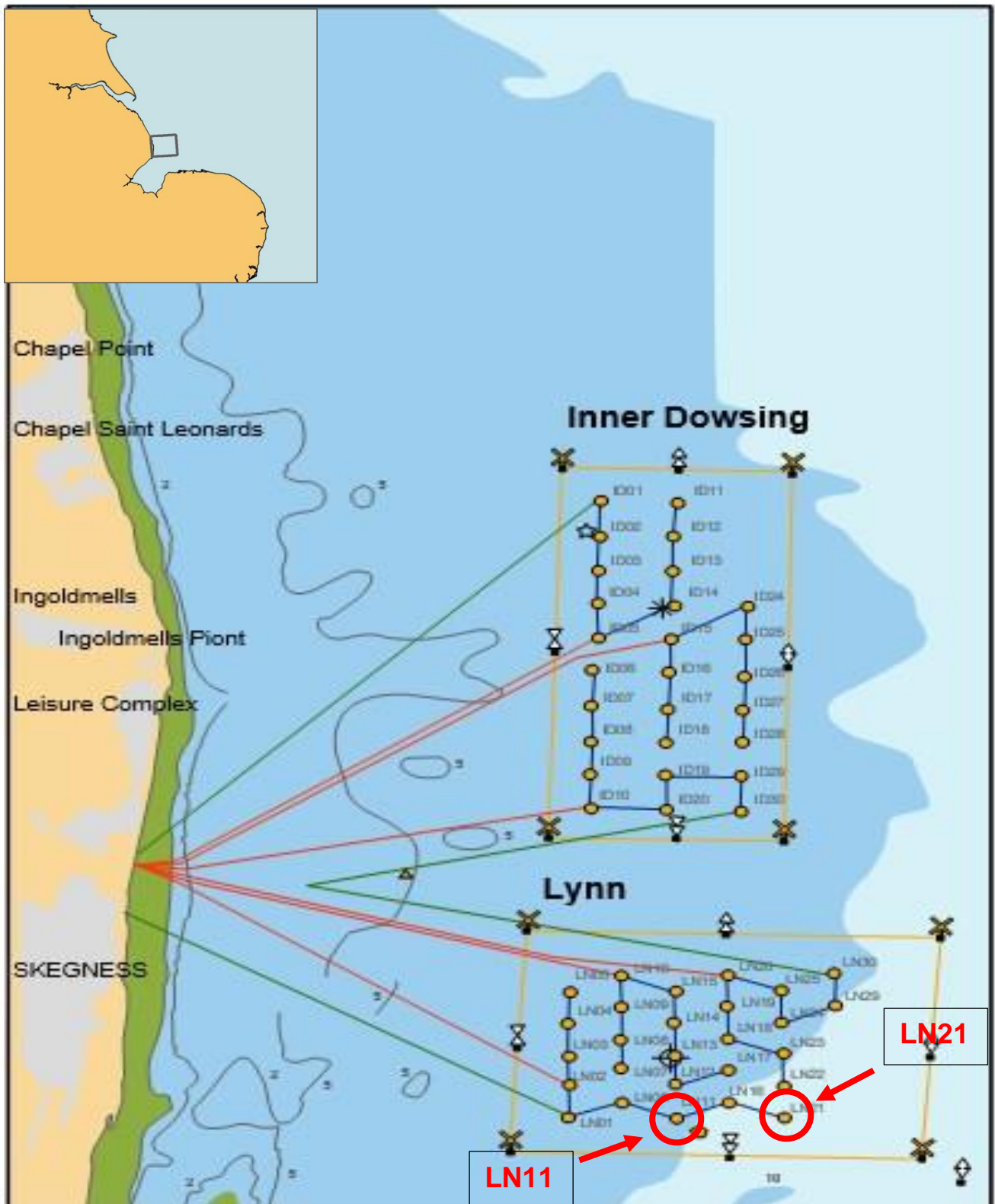
1. LN21 – Coordinates: LATITUDE - 53°07.5795'N LONGITUDE - 000°28.1802'E
2. LN11 – Coordinates: LATITUDE - 53°07.5603'N LONGITUDE - 000°27.0157'E



### Vessel information

|           |                 |
|-----------|-----------------|
| Name      | Wind Enterprise |
| Call sign | OZTU2           |
| MMSI      | 219370000       |
| Length    | 120m            |
| Beam      | 40m             |

# Lynn and Inner Dowsing Wind Turbine Locations



**Mariners should maintain a safe distance of 500m from the Jack Up vessel when it is on station adjacent to the wind turbine.**

Mariners are advised to exert caution in the vicinity of the wind farm during this time and should communicate with the SiemensGamesa Operational Marine Controller when operating near the site

## **SiemensGamesa Operational Marine Controller**

Email: [LIDOperationalmarinecontrol@siemensgamesa.com](mailto:LIDOperationalmarinecontrol@siemensgamesa.com)  
Tel: 01472 806851 / 07921 249544  
Radio Channel: 161.175MHz

## **Windfarm Liaison**

Mariners are also advised that Lynn and Inner Dowsing queries should be directed through the Site Owners Representatives – XceCo

Simon Matson  
Tel: 07878207879  
Email: [simon@xceco.co.uk](mailto:simon@xceco.co.uk)

Tony Lyon  
Tel: 07789 573238  
Email: [tony@xceco.co.uk](mailto:tony@xceco.co.uk)