

NOTICE TO MARINERS

GEOPHYSICAL SURVEY – THAMES FIELD

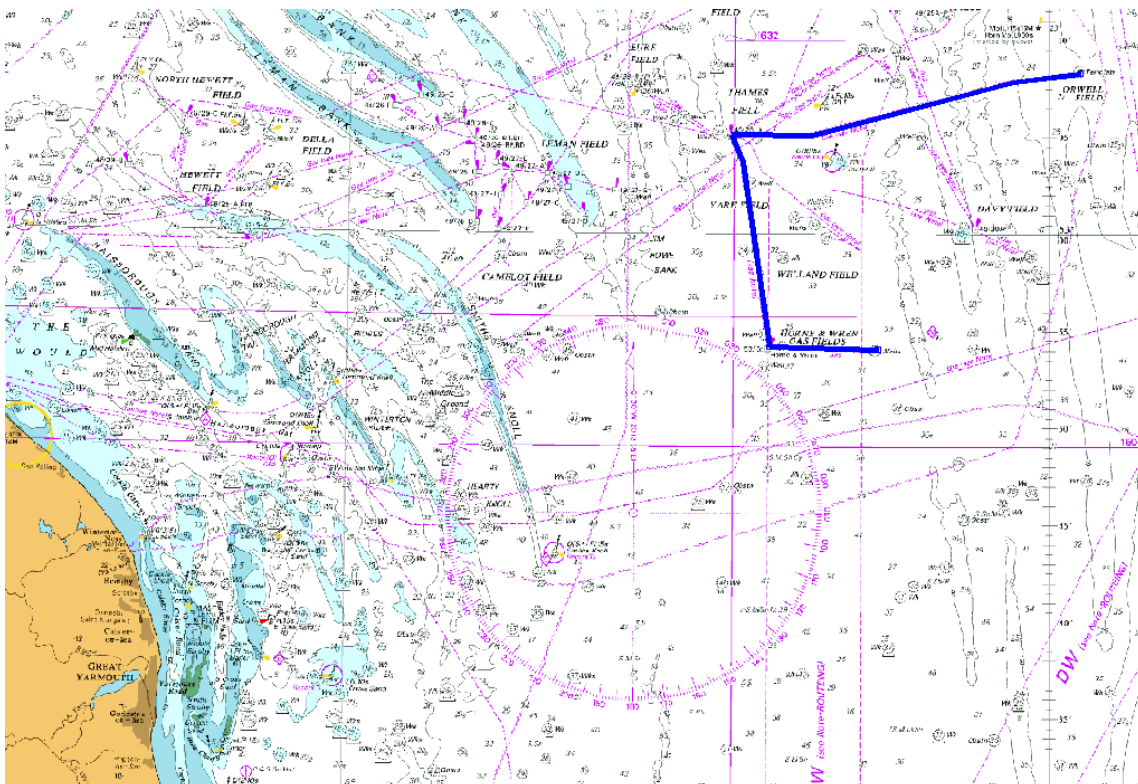
EGS (International) Ltd will shortly be commencing a geophysical survey of subsea assets within the Thames Field, which lies approximately 42 nautical miles northeast of Great Yarmouth, using our offshore survey vessel ‘EGS Pioneer’.

This survey is planned to take approximately 1 to 2 weeks to complete, depending on weather conditions and the vessel may be on site from 31st August, when sea conditions are suitable. The vessel will be operating on a 24-hour watch basis and will display appropriate day shapes and lights during survey operations, maintaining a listening watch VHF CH16, with AIS transmission.

The survey equipment will include subsea towed systems and the vessel will be surveying at a speed of approximately 3-4 knots. EGS Pioneer will be steering along defined line plans, either along a route or in discrete survey boxes, so please exercise caution around the vessel as significant course changes are likely, with lines run in reciprocal directions.

Survey Area Detail:

EGS Pioneer will be surveying the routes between the old location of the Thames platform to the three gas fields of: Orwell, Horne & Wren and Wissey. The vessel will also be surveying within a 1km² box at each field. EGS Pioneer may also be found transiting between sites.



MV 'EGS Pioneer'



Length: 24.4m

Beam: 6.6m

Draft: 4.0m

Call sign: 2EGS9

Enquiries regarding this notice should be directed to:
Gareth Stevens, gstevens@egssurvey.co.uk
EGS Project Manager

EGS (International) Ltd

Woolmer Way, Bordon, Hampshire, GU35 9QE.

Tel: 01420 489 329

Distribution List:

EGS Pioneer

pioneer@egssurvey.co.uk

UKHO (NM's)

sdr@ukho.gov.uk

MCA

navigationsafety@mcga.gov.uk

dover.coastguard@mcga.gov.uk

Kingfisher Bulletin

kingfisher@seafish.co.uk

IFCA, Eastern Region

mail@eastern-ifca.gov.uk

NFFO

nffo@nffo.org.uk

Port of Lowestoft

lowestoftportcontrol@abports.co.uk

Port of Great Yarmouth

gyinfo@peelports.co.uk