



**KING'S LYNN CONSERVANCY BOARD.**

**Notice to Mariners No. 26/2021**

**East Coast of England - The Wash**

**Approaches to King's Lynn**

**Bathymetric Surveys & ROV Surveys- TC Lincs Offshore Windfarm Export Cables.**

Mariners are advised that survey vessel "OSP Noortruck" will perform bathymetric, ROV and Sub-bottom profile marine survey operations between Lat 52° 48.815'N Long 000° 12.603'E & Lat 53° 04.805'N Long 000° 28.555' E along the existing TC Lincs Windfarm Export Cable routes.

The corridor width for the cable survey will nominally be 250m. The survey vessel may be found running both along the cable route and in the general vicinity of the survey corridor.

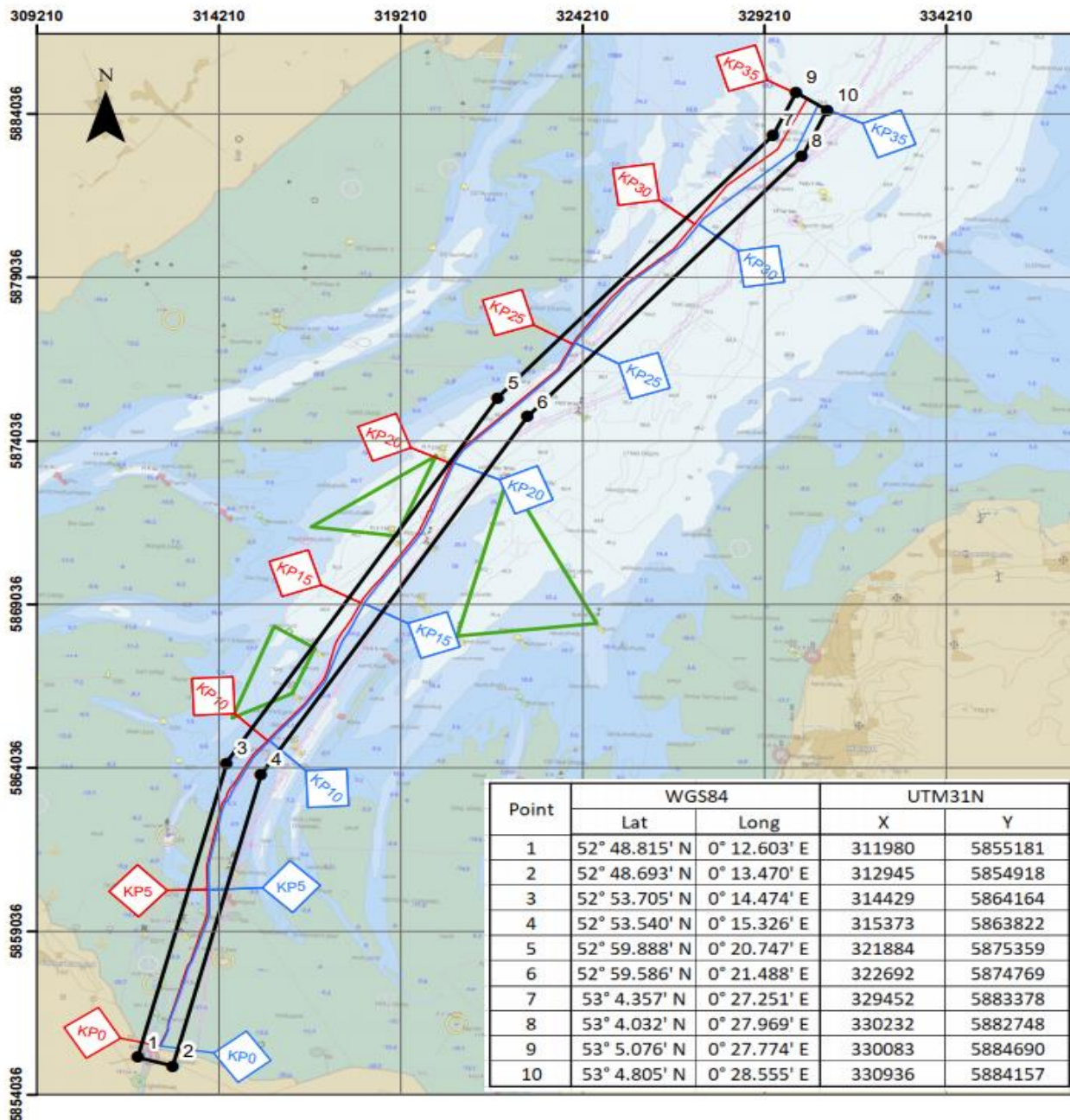
Survey operations are expected to commence on 8th September 2021 with scheduled completion by 16th September 2021, depending on weather conditions. Dates may be subject to change.

The vessel will operate on a 24hr basis and will display appropriate day shapes & lights during survey operations and will actively transmit an AIS signal.

Survey operations will involve the use of hull mounted and equipment towed below the water surface.

**A wide berth is requested at all times as the vessel will be restricted in her ability to manoeuvre.**

The vessel will maintain a listening watch on VHF16 and VHF 14 whilst in the KLCB area of jurisdiction.



3<sup>rd</sup> September 2021.

P.J. Jary.

Harbour Master.

King's Lynn,

Norfolk PE30 ILL

[www.kingslynnport.co.uk](http://www.kingslynnport.co.uk)