

# NOTICE TO MARINERS

Issue Date: 03<sup>rd</sup> September 2021

## Viking Link Project

### Post-lay Installation Rock Placement Works, UK waters

Mariners are advised about post-lay Rock Placement works planned for the first section of the cable route, Campaign 1 (see **Figure 1** as reference), planned for the Viking Link project which is a HVDC electricity transmission interconnector between Denmark and England, a joint venture between National Grid and Energinet.

The Campaign 1 post-lay Rock Placement works covered by this notice are in UK waters and are planned to commence on the **12<sup>th</sup> September 2021** with expected completion by end of October 2021.

The post-lay Rock Placement for Campaign 1 is planned in the following areas (see **Figure 2** as reference):

- Where pre-existing cables and pipelines are crossed by the Viking Link cable route (see **Table 1a**); and
- Where it's requested rock placement for cable protection (see **Table 1b**).

The dynamic positioning system onboard will keep the vessel in position in order to progressively and accurately install the rock in the planned locations.

The Campaign 1 post-lay Rock Placement works are being managed by Prysmian PowerLink carried out by **DEME Boskalis JV** using the following vessels:

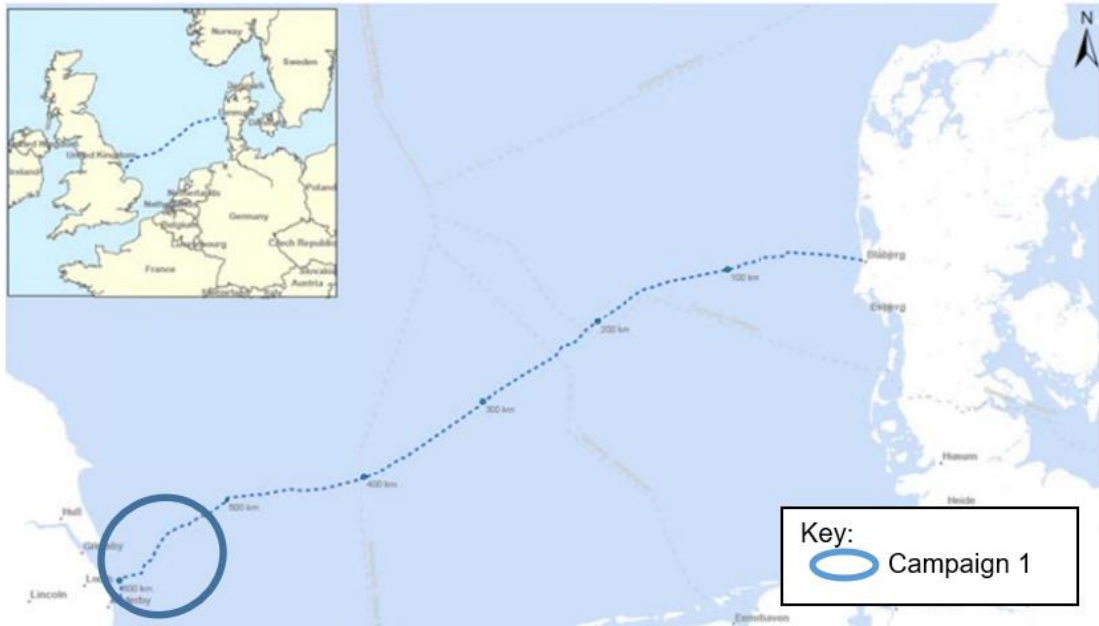
- **DPPPV "Rockpiper"**.

Vessels and their contact details are given in **Table 2** below.

Expected vessels transit route is showed in **Figure 3**.

**Vessels are requested to pass at a safe speed and distance and fishing vessels are advised to remain a safe distance, approximately 1000m (0.5 nautical miles) from the areas identified. During these works the vessel will have restricted maneuverability as it completes its work scope.**

**VHF CH 16 will be monitored at all times and will be used to contact the coastguard in the event of an emergency.**



**Figure 1:** Viking Link Cable Route & Campaign 1 working area



**Figure 2:** Subsea rock installation in C1 campaign (green lines)

Crossing Asset	ETRS89 - UTM31N		ETRS89	
	Easting (m)	Northing (m)	Latitude	Longitude
Hornsea 2 Nearshore NW Cable	340561	5933249	53° 31.436'N	000° 35.689'E
Hornsea 2 Nearshore SW Cable	340591	5933107	53° 31.360'N	000° 35.719'E
Hornsea 2 Nearshore NE Cable	340610	5933012	53° 31.309'N	000° 35.740'E
Hornsea 1 Western Cable	340643	5932887	53° 31.243'N	000° 35.773'E
Hornsea 1 Central Cable	340689	5932735	53° 31.162'N	000° 35.820'E
Hornsea 1 Eastern Cable	340724	5932617	53° 31.099'N	000° 35.855'E
Theddlethorpe to Murdoch MD - 26" Gas Pipeline	326496	5917045	53° 22.439'N	000° 23.508'E
Theddlethorpe to Murdoch MD - 4" Methanol Line	326484	5917027	53° 22.430'N	000° 23.498'E
Pickerill A to Theddlethorpe - 24" Gas Pipeline	326423	5916940	53° 22.381'N	000° 23.445'E
LOGGS PP to Theddlethorpe - 36" Gas Pipeline	326366	5916859	53° 22.336'N	000° 23.397'E
LOGGS PP to Theddlethorpe - 4" Methanol Line	326355	5916842	53° 22.327'N	000° 23.387'E
Viking Link AR to Theddlethorpe - 28" Gas / 3" Methanol (Piggybacked)	326314	5915227	53° 21.456'N	000° 23.403'E

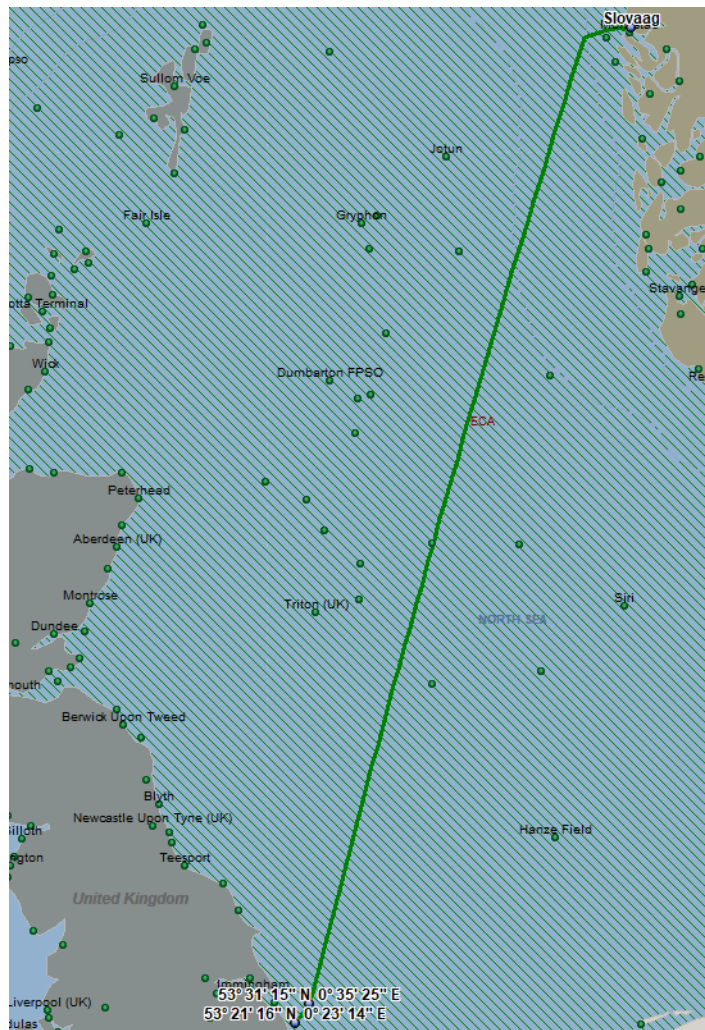
**Table 1a:** Locations for post-lay Rock Placement at crossings (Campaign 1)

Initial rock placement locations			Revised rock placement locations			Within 12NM	Offshore 12NM
Start KP	End KP	Distance (km)	Start KP	End KP	Distance (km)		
478.823	479.338	0.515					✓
479.438	480.023	0.585					✓
479.823	480.565	0.742					✓
480.365	481.704	1.339					✓
486.595	492.897	6.302					✓
492.697	494.100	1.403					✓
506.057	509.820	3.763					✓
510.370	511.070	0.700					✓
512.270	512.850	0.580					✓
526.701	531.708	5.007					✓
534.039	538.678	4.639					✓
538.700	538.942	0.242					✓
538.776	543.791	5.015					✓
544.113	544.430	0.317					✓
545.444	546.921	1.477					✓
547.132	550.028	2.896					✓
549.828	550.378	0.550					✓
550.178	564.363	14.185					✓
564.520	565.853	1.333					✓
566.002	577.362	11.360	568.108	577.362	9.254		✓
578.116	590.842	12.726	578.316	590.842	12.526		✓
590.642	592.003	1.361	590.842	590.880	0.038	✓	
591.803	599.299	7.496	591.880	599.200	7.32	✓	
599.099	605.000	5.901				✓	
606.076	606.294	0.218				✓	
613.332	613.621	0.289				✓	
614.622	615.114	0.492	614.800	615.114	0.314	✓	
614.914	618.560	3.646	615.114	618.560	3.446	✓	

**Table 1b:** Potential areas requiring post-lay Rock Placement for cable protection (Campaign 1)

Vessel Name	Vessel Photograph	Vessel Details
<p><b>DPFPV</b> <b>“Rockpiper”</b></p>	 <p>© ronnie_roberts/vessels-at-holyhead.blogspot.com MarineTraffic.com</p>	<p>MMSI: 209449000 IMO: 9583861 Call Sign: 5BML3</p>

**Table 2:** Campaign 1 post-lay Rock Placement works vessels details



**Figure 4:** Approximate DPFPV transit route to start and end of post-lay scope of work, coming from Bergen, Norway

## Contact Details:

Further enquiries should be addressed to the following contacts:

FLO contact

Jonathan Keer

[jonathan@brownmay.com](mailto:jonathan@brownmay.com)

Mobile: +44 1379 872145

Freya Sandison

[Freya@brownmay.com](mailto:Freya@brownmay.com)

Telephone: 01379 872145

Prysmian Project Manager

Matteo Borselli

[matteo.borselli@prysmiangroup.com](mailto:matteo.borselli@prysmiangroup.com)

Mobile: +39 345 45 95 615

DEME Boskalis JV Project Manager

Marco de Lange

[De.Lange.Marco@deme-group.com](mailto:De.Lange.Marco@deme-group.com)

Mobile: +31 6 23 09 69 15

Vessel master of Rockpiper

Telephone: +31 78 808 0262