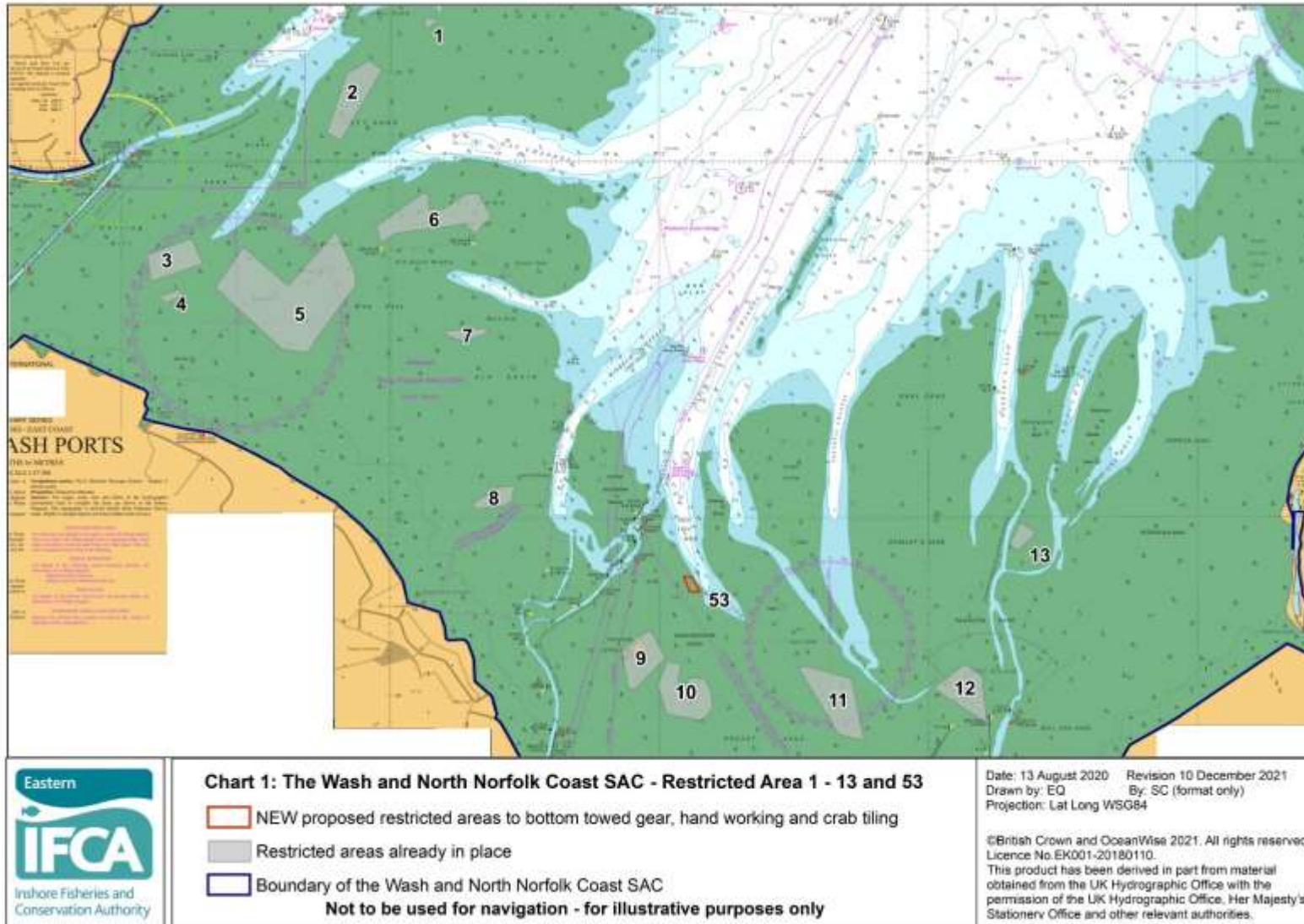


# Closed Areas Byelaw 2021: Charts and Co-ordinates



# Closed Areas Byelaw 2021: Charts and Co-ordinates

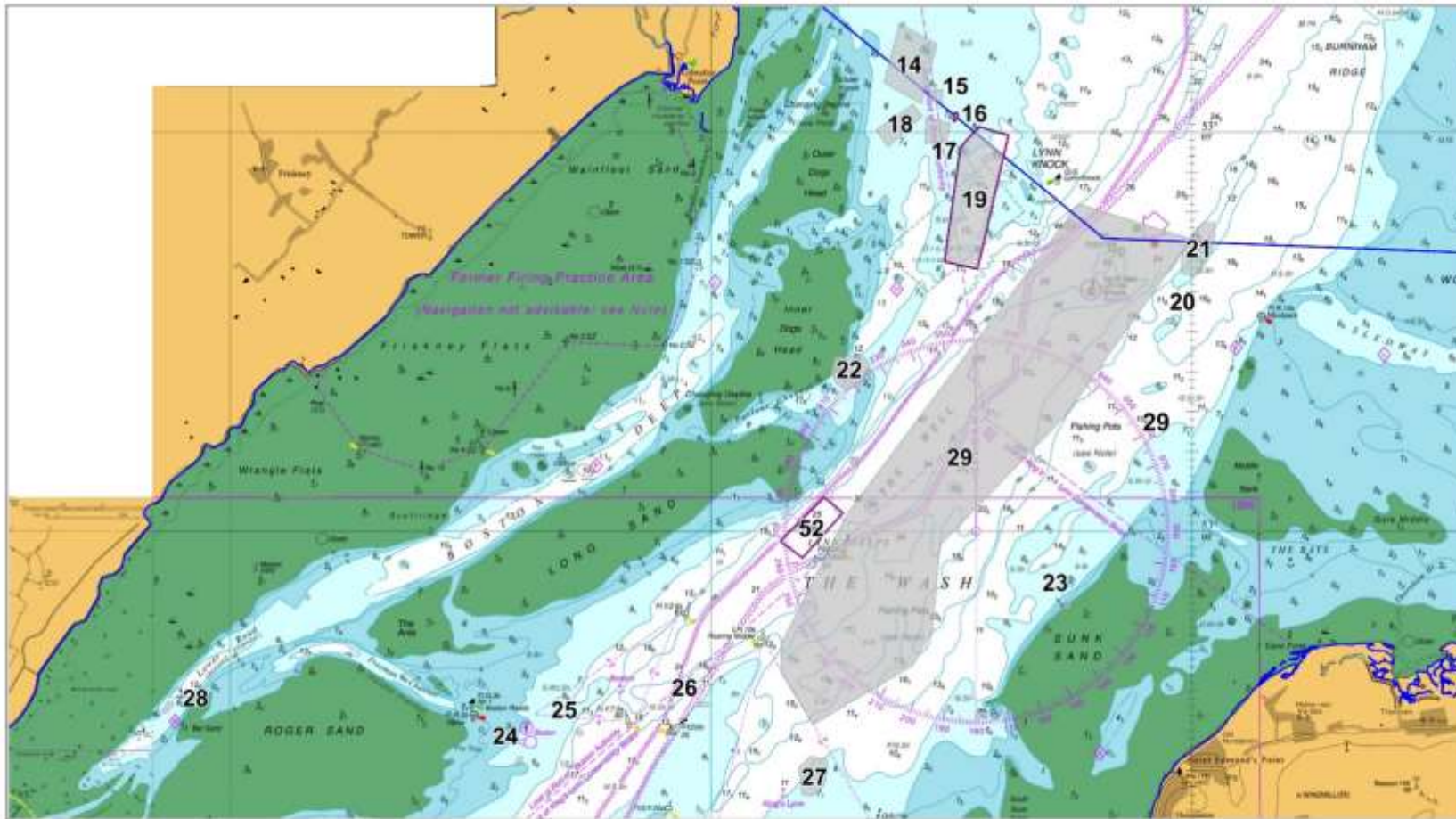


Chart 2: The Wash and North Norfolk Coast SAC – Restricted Areas 14 to 29 and 52

- NEW proposed restricted areas to bottom towed gear
- Restricted areas already in place
- The Wash and North Norfolk Coast SAC boundary

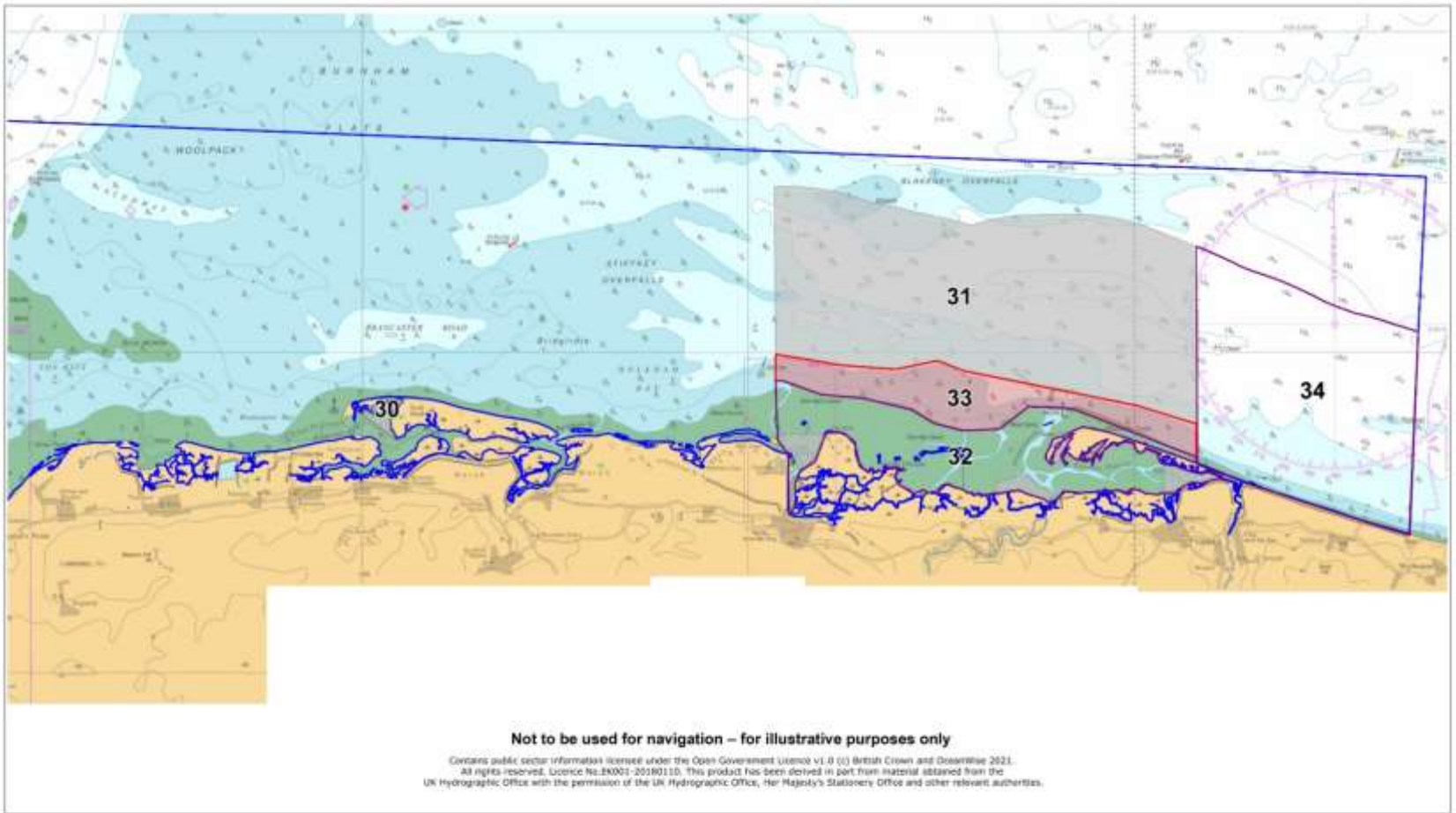
**Not to be used for navigation – for illustrative purposes only**

Contains public sector information licensed under the Open Government Licence v1.0 (c) British Crown and Oceanic 2021. All rights reserved. Licence No. EK001-20190110. This product has been derived in part from material obtained from the UK Hydrographic Office with the permission of the UK Hydrographic Office, Her Majesty's Stationery Office and other relevant authorities.

Date: 02/12/2021  
 Drawn by: SC  
 Projection: Lat Long WSG84  
 EMS boundary: JWCC download -  
 UK\_SACs\_withMarineComponents\_2103821

Chart\_2\_Areas\_14\_29\_and\_52\_Formal\_consultation.WDR

# Closed Areas Byelaw 2021: Charts and Co-ordinates



# Closed Areas Byelaw 2021: Charts and Co-ordinates



Chart 4: Cromer Shoal Chalk Beds MCZ - Restricted Areas 35,59 and 60 and the Artisanal Shrimp Management Area

— Cromer Shoal Chalk Beds MCZ boundary       Restricted area to bottom towed gear  
 Artisanal shrimp management area

NOT TO BE USED FOR NAVIGATION - FOR ILLUSTRATIVE PURPOSES ONLY

(c) British Crown and Oceanwise 2021. All rights reserved. Licence No.EK001-20180110. This product has been derived in part from material obtained from the Hydrographic Office with the permission of the UK Hydrographic office, Her Majesty's Stationary office and other relevant authorities.

Date: 01/10/2021  
 Drawn by: TB  
 Projection: Lat Long WGS1984  
 EMS\_boundary:  
 JNCC\_download\_SAC's  
 withmarinecomponents\_21038

# Closed Areas Byelaw 2021: Charts and Co-ordinates



**Chart 5: Haisborough, Hammond & Winterton SAC – Restricted Areas 36 to 38**

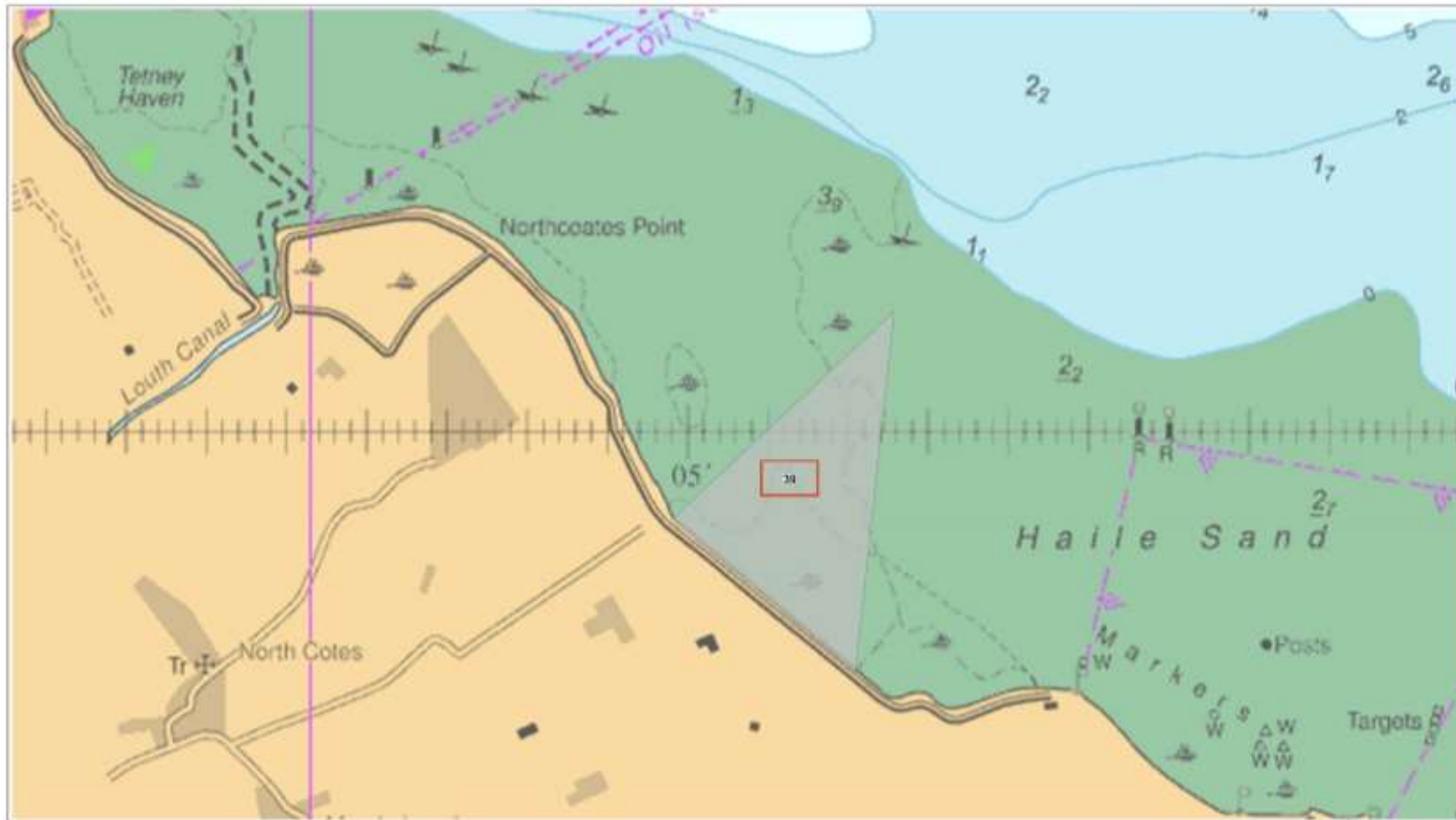
- Restricted area to bottom-towed gear
- Eastern IFCA district boundary
- Haisborough, Hammond and Winterton SAC boundary

**Not to be used for Navigation – for illustrative purposes only**  
Contains public sector information licensed under the Open Government Licence v1.0 (c) British Crown and OceanWise 2019. All rights reserved. Licence No BK001-20190310. This product has been derived in part from material obtained from the UK Hydrographic Office with the permission of the UK Hydrographic Office, Her Majesty's Stationary Office and other relevant authorities.

Date: 20/06/2019  
 Drawn by: SC  
 Projection: Lat Long WSG84  
 EMS boundary: JNCC download -  
 UK\_SACs\_withMarineComponents\_2103821

2019\_06\_HHW\_Byelaw\_Chart\_5.WOR

# Closed Areas Byelaw 2021: Charts and Co-ordinates



### Chart 6: The Humber Estuary SAC – Restricted Area 39

- NEW proposed restricted area to bottom towed gear, hand working and crab tiling
- Restricted area already in place
- The Humber Estuary SAC boundary

**Not to be used for Navigation – for illustrative purposes only**

Contains public sector information licensed under the Open Government Licence v1.0 (c) British Crown and OceanWise 2021. All rights reserved. Licence No.20001-20180110. This product has been derived in part from material obtained from the UK Hydrographic Office with the permission of the UK Hydrographic Office, Her Majesty's Stationery Office and other relevant authorities.

Date: 16/12/2021  
 Drawn by: SC  
 Projection: Lat Long WSG84  
 EMS boundary: JNCC download -  
 UK\_SACs\_withMarineComponents\_2103821

Chart\_6\_Area\_39\_Final\_consultation.WOR

# Closed Areas Byelaw 2021: Charts and Co-ordinates

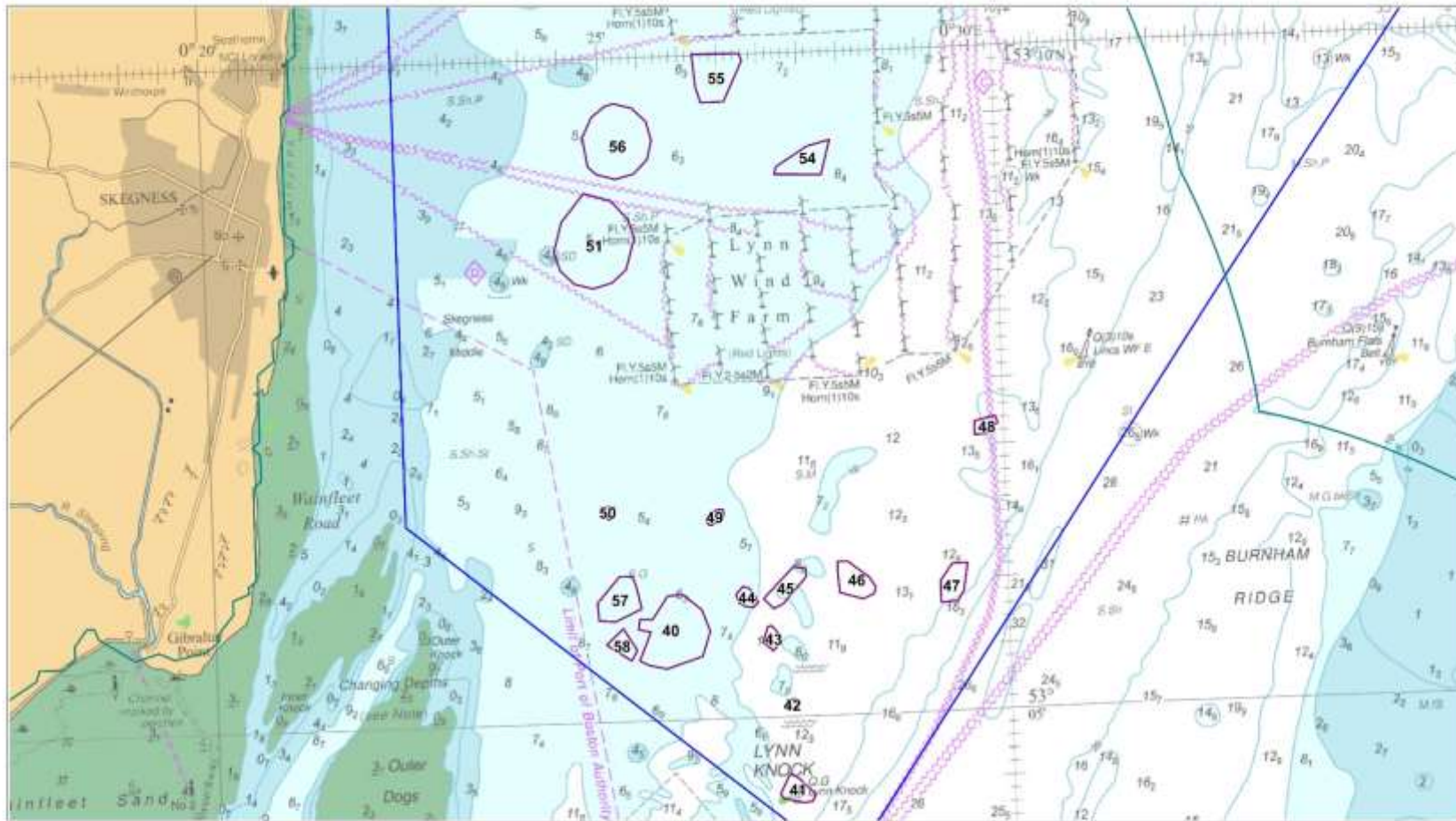


Chart 7: Inner Dowsing, Race Bank and North Ridge SAC - Restricted Areas 40 - 51 and 54 - 58

- Restricted area to bottom-towed gear
- IDRBNR SAC boundary
- EIFCA boundary

**Not to be used for Navigation – for illustrative purposes only**

Contains public sector information licensed under the Open Government Licence v1.0 (c) British Crown and OceanWise 2021. All rights reserved. Licence No.24001-20210110. This product has been derived in part from material obtained from the UK Hydrographic Office with the permission of the UK Hydrographic Office, Her Majesty's Stationery Office and other relevant authorities.

Date:04/10/2021  
 Drawn by:SC  
 Projection: Lat Long WGS84  
 EMS boundary:JNCC download -  
 UK\_SACs\_withMarineComponents\_2103621

2021\_10\_IDRBNR\_all\_dowsing\_lynn.WOR

## Closed Areas Byelaw 2021: Charts and Co-ordinates

### Restricted Area 1

Restricted Area 1 is defined by a boundary drawn by the series of straight lines connecting each point listed in this table to the next point in sequence and finally returning to Point A, as set out in chart 1 for illustrative purposes.

| Point | Latitude     | Longitude    | Area (hectares) |
|-------|--------------|--------------|-----------------|
| A     | 52° 57.60' N | 00° 10.62' E | 3.5             |
| B     | 52° 57.60' N | 00° 10.84' E |                 |
| C     | 52° 57.58' N | 00° 10.86' E |                 |
| D     | 52° 57.50' N | 00° 10.71' E |                 |
| E     | 52° 57.50' N | 00° 10.66' E |                 |

### Restricted Area 2

Restricted Area 2 is defined by a boundary drawn by the series of straight lines connecting each point listed in this table to the next point in sequence and finally returning to Point A, as set out in chart 1 for illustrative purposes.

| Point | Latitude     | Longitude    | Area (hectares) |
|-------|--------------|--------------|-----------------|
| A     | 52° 57.13' N | 00° 09.61' E | 79.8            |
| B     | 52° 57.03' N | 00° 09.84' E |                 |
| C     | 52° 56.24' N | 00° 09.08' E |                 |
| D     | 52° 56.32' N | 00° 08.81' E |                 |
| E     | 52° 56.99' N | 00° 09.19' E |                 |

### Restricted Area 3

Restricted Area 3 is defined by a boundary drawn by the series of straight lines connecting each point listed in this table to the next point in sequence and finally returning to Point A, as set out in chart 1 for illustrative purposes.

| Point | Latitude     | Longitude    | Area (hectares) |
|-------|--------------|--------------|-----------------|
| A     | 52° 54.95' N | 00° 05.47' E | 60.7            |
| B     | 52° 55.14' N | 00° 06.30' E |                 |
| C     | 52° 54.85' N | 00° 06.51' E |                 |
| D     | 52° 54.65' N | 00° 05.54' E |                 |



## Closed Areas Byelaw 2021: Charts and Co-ordinates

### Restricted Area 4

Restricted Area 4 is defined by a boundary drawn by the series of straight lines connecting each point listed in this table to the next point in sequence and finally returning to Point A, as set out in chart 1 for illustrative purposes.

| Point | Latitude     | Longitude    | Area (hectares) |
|-------|--------------|--------------|-----------------|
| A     | 52° 54.56' N | 00° 06.06' E | 6.5             |
| B     | 52° 54.49' N | 00° 06.13' E |                 |
| C     | 52° 54.41' N | 00° 05.81' E |                 |
| D     | 52° 54.48' N | 00° 05.70' E |                 |

### Restricted Area 5

Restricted Area 5 is defined by a boundary drawn by the series of straight lines connecting each point listed in this table to the next point in sequence and finally returning to Point A, as set out in chart 1 for illustrative purposes.

| Point | Latitude     | Longitude    | Area (hectares) |
|-------|--------------|--------------|-----------------|
| A     | 52° 55.20' N | 00° 08.97' E | 379.7           |
| B     | 52° 54.74' N | 00° 09.35' E |                 |
| C     | 52° 54.61' N | 00° 09.36' E |                 |
| D     | 52° 53.85' N | 00° 08.46' E |                 |
| E     | 52° 53.89' N | 00° 07.98' E |                 |
| F     | 52° 54.58' N | 00° 06.74' E |                 |
| G     | 52° 55.04' N | 00° 07.26' E |                 |
| H     | 52° 54.60' N | 00° 08.10' E |                 |

## Closed Areas Byelaw 2021: Charts and Co-ordinates

### Restricted Area 6

Restricted Area 6 is defined by a boundary drawn by the series of straight lines connecting each point listed in this table to the next point in sequence and finally returning to Point A, as set out in chart 1 for illustrative purposes.

| Point | Latitude     | Longitude    | Area (hectares) |
|-------|--------------|--------------|-----------------|
| A     | 52° 55.27' N | 00° 09.74' E | 123.4           |
| B     | 52° 55.64' N | 00° 10.60' E |                 |
| C     | 52° 55.63' N | 00° 10.71' E |                 |
| D     | 52° 55.46' N | 00° 10.72' E |                 |
| E     | 52° 55.46' N | 00° 10.96' E |                 |
| F     | 52° 55.64' N | 00° 11.42' E |                 |
| G     | 52° 55.64' N | 00° 11.64' E |                 |
| H     | 52° 55.38' N | 00° 11.87' E |                 |
| I     | 52° 55.19' N | 00° 11.58' E |                 |
| J     | 52° 55.29' N | 00° 11.38' E |                 |
| K     | 52° 55.19' N | 00° 10.09' E |                 |
| L     | 52° 55.08' N | 00° 09.82' E |                 |

### Restricted Area 7

Restricted Area 7 is defined by a boundary drawn by the series of straight lines connecting each point listed in this table to the next point in sequence and finally returning to Point A, as set out in chart 1 for illustrative purposes.

| Point | Latitude     | Longitude    | Area (hectares) |
|-------|--------------|--------------|-----------------|
| A     | 52° 54.09' N | 00° 11.00' E | 15.7            |
| B     | 52° 54.12' N | 00° 11.39' E |                 |
| C     | 52° 54.13' N | 00° 11.83' E |                 |
| D     | 52° 54.07' N | 00° 11.78' E |                 |
| E     | 52° 53.98' N | 00° 11.40' E |                 |
| F     | 52° 54.00' N | 00° 11.22' E |                 |

## Closed Areas Byelaw 2021: Charts and Co-ordinates

### Restricted Area 8

Restricted Area 8 is defined by a boundary drawn by the series of straight lines connecting each point listed in this table to the next point in sequence and finally returning to Point A, as set out in chart 1 for illustrative purposes.

| Point | Latitude     | Longitude    | Area (hectares) |
|-------|--------------|--------------|-----------------|
| A     | 52° 52.16' N | 00° 11.52' E | 24.6            |
| B     | 52° 52.35' N | 00° 12.06' E |                 |
| C     | 52° 52.36' N | 00° 12.30' E |                 |
| D     | 52° 52.31' N | 00° 12.33' E |                 |
| E     | 52° 52.28' N | 00° 12.27' E |                 |
| F     | 52° 52.19' N | 00° 12.26' E |                 |
| G     | 52° 52.14' N | 00° 12.14' E |                 |
| H     | 52° 52.12' N | 00° 11.85' E |                 |
| I     | 52° 52.09' N | 00° 11.62' E |                 |

### Restricted Area 9

Restricted Area 9 is defined by a boundary drawn by the series of straight lines connecting each point listed in this table to the next point in sequence and finally returning to Point A, as set out in chart 1 for illustrative purposes.

| Point | Latitude     | Longitude    | Area (hectares) |
|-------|--------------|--------------|-----------------|
| A     | 52° 50.74' N | 00° 14.83' E | 64.5            |
| B     | 52° 50.43' N | 00° 15.12' E |                 |
| C     | 52° 50.08' N | 00° 14.57' E |                 |
| D     | 52° 50.08' N | 00° 14.43' E |                 |
| E     | 52° 50.51' N | 00° 14.29' E |                 |

## Closed Areas Byelaw 2021: Charts and Co-ordinates

| <b>Restricted Area 10</b>   |                 |                  |                        |
|---|-----------------|------------------|------------------------|
| Restricted Area 10 is defined by a boundary drawn by the series of straight lines connecting each point listed in this table to the next point in sequence as and finally returning to Point A, set out in chart 1 for illustrative purposes. |                 |                  |                        |
| <b>Point</b>  | <b>Latitude</b> | <b>Longitude</b> | <b>Area (hectares)</b> |
| A   | 52° 50.39' N    | 00° 15.14' E     | 89.2                   |
| B   | 52° 50.35' N    | 00° 15.40' E     |                        |
| C   | 52° 50.18' N    | 00° 15.35' E     |                        |
| D   | 52° 50.08' N    | 00° 15.41' E     |                        |
| E   | 52° 50.20' N    | 00° 15.59' E     |                        |
| F   | 52° 50.20' N    | 00° 15.84' E     |                        |
| G   | 52° 50.04' N    | 00° 15.96' E     |                        |
| H   | 52° 49.86' N    | 00° 15.99' E     |                        |
| I   | 52° 49.77' N    | 00° 15.88' E     |                        |
| J   | 52° 49.72' N    | 00° 15.75' E     |                        |
| K   | 52° 49.79' N    | 00° 15.13' E     |                        |
| L   | 52° 50.12' N    | 00° 14.97' E     |                        |

| <b>Restricted Area 11</b>   |                 |                  |                        |
|---|-----------------|------------------|------------------------|
| Restricted Area 11 is defined by a boundary drawn by the series of straight lines connecting each point listed in this table to the next point in sequence and finally returning to Point A, as set out in chart 1 for illustrative purposes. |                 |                  |                        |
| <b>Point</b>  | <b>Latitude</b> | <b>Longitude</b> | <b>Area (hectares)</b> |
| A   | 52° 50.32' N    | 00° 17.58' E     | 103.5                  |
| B   | 52° 50.32' N    | 00° 17.77' E     |                        |
| C   | 52° 50.19' N    | 00° 18.57' E     |                        |
| D   | 52° 49.49' N    | 00° 18.80' E     |                        |
| E   | 52° 49.57' N    | 00° 18.33' E     |                        |

## Closed Areas Byelaw 2021: Charts and Co-ordinates

| <b>Restricted Area 12</b>   |                 |                  |                        |
|---|-----------------|------------------|------------------------|
| Restricted Area 12 is defined by a boundary drawn by the series of straight lines connecting each point listed in this table to the next point in sequence and finally returning to Point A, as set out in chart 1 for illustrative purposes. |                 |                  |                        |
| <b>Point</b>  | <b>Latitude</b> | <b>Longitude</b> | <b>Area (hectares)</b> |
| A   | 52° 50.08' N    | 00° 20.09' E     | 68.6                   |
| B   | 52° 50.36' N    | 00° 20.68' E     |                        |
| C   | 52° 50.23' N    | 00° 20.99' E     |                        |
| D   | 52° 49.69' N    | 00° 21.09' E     |                        |

| <b>Restricted Area 13</b>   |                 |                  |                        |
|---|-----------------|------------------|------------------------|
| Restricted Area 13 is defined by a boundary drawn by the series of straight lines connecting each point listed in this table to the next point in sequence and finally returning to Point A, as set out in chart 1 for illustrative purposes. |                 |                  |                        |
| <b>Point</b>  | <b>Latitude</b> | <b>Longitude</b> | <b>Area (hectares)</b> |
| A   | 52° 51.69' N    | 00° 21.50' E     | 16.2                   |
| B   | 52° 51.95' N    | 00° 21.71' E     |                        |
| C   | 52° 51.82' N    | 00° 22.01' E     |                        |
| D   | 52° 51.63' N    | 00° 21.66' E     |                        |

| <b>Restricted Area 14</b>   |                 |                  |                        |
|---|-----------------|------------------|------------------------|
| Restricted Area 14 is defined by a boundary drawn by the series of straight lines connecting each point listed in this table to the next point in sequence and finally returning to Point A, as set out in chart 2 for illustrative purposes. |                 |                  |                        |
| <b>Point</b>  | <b>Latitude</b> | <b>Longitude</b> | <b>Area (hectares)</b> |
| A   | 53° 06.35' N    | 00° 23.92' E     | 136.7                  |
| B   | 53° 06.09' N    | 00° 24.70' E     |                        |
| C   | 53° 05.35' N    | 00° 24.37' E     |                        |
| D   | 53° 05.61' N    | 00° 23.60' E     |                        |

## Closed Areas Byelaw 2021: Charts and Co-ordinates

| <b>Restricted Area 15</b>   |                 |                  |                        |
|---|-----------------|------------------|------------------------|
| Restricted Area 15 is defined by a boundary drawn by the series of straight lines connecting each point listed in this table to the next point in sequence and finally returning to Point A, as set out in chart 2 for illustrative purposes. |                 |                  |                        |
| <b>Point</b>  | <b>Latitude</b> | <b>Longitude</b> | <b>Area (hectares)</b> |
| A   | 53° 05.53' N    | 00° 24.58' E     | 8.0                    |
| B   | 53° 05.52' N    | 00° 24.82' E     |                        |
| C   | 53° 05.37' N    | 00° 24.80' E     |                        |
| D   | 53° 05.40' N    | 00° 24.50' E     |                        |

| <b>Restricted Area 16</b>   |                 |                  |                        |
|---|-----------------|------------------|------------------------|
| Restricted Area 16 is defined by a boundary drawn by the series of straight lines connecting each point listed in this table to the next point in sequence and finally returning to Point A, as set out in chart 2 for illustrative purposes. |                 |                  |                        |
| <b>Point</b>  | <b>Latitude</b> | <b>Longitude</b> | <b>Area (hectares)</b> |
| A.  | 53° 05.24' N    | 00° 25.07' E     | 1.48                   |
| B.  | 53° 05.23' N    | 00° 25.13' E     |                        |
| C.  | 53° 05.18' N    | 00° 25.13' E     |                        |
| D.  | 53° 05.13' N    | 00° 25.07' E     |                        |
| E.  | 53° 05.14' N    | 00° 25.03' E     |                        |

| <b>Restricted Area 17</b>   |                 |                  |                        |
|---|-----------------|------------------|------------------------|
| Restricted Area 17 is defined by a boundary drawn by the series of straight lines connecting each point listed in this table to the next point in sequence and finally returning to Point A, as set out in chart 2 for illustrative purposes. |                 |                  |                        |
| <b>Point</b>  | <b>Latitude</b> | <b>Longitude</b> | <b>Area (hectares)</b> |
| A.  | 53° 05.18' N    | 00° 24.47' E     | 26.8                   |
| B.  | 53° 05.10' N    | 00° 24.98' E     |                        |
| C.  | 53° 04.89' N    | 00° 24.89' E     |                        |
| D.  | 53° 04.85' N    | 00° 24.45' E     |                        |

## Closed Areas Byelaw 2021: Charts and Co-ordinates

| <b>Restricted Area 18</b>   |                 |                  |                        |
|---|-----------------|------------------|------------------------|
| Restricted Area 18 is defined by a boundary drawn by the series of straight lines connecting each point listed in this table to the next point in sequence and finally returning to Point A, as set out in chart 2 for illustrative purposes. |                 |                  |                        |
| <b>Point</b>  | <b>Latitude</b> | <b>Longitude</b> | <b>Area (hectares)</b> |
| A.  | 53° 05.34' N    | 00° 24.20' E     | 43.2                   |
| B.  | 53° 05.19' N    | 00° 24.40' E     |                        |
| C.  | 53° 04.81' N    | 00° 23.68' E     |                        |
| D.  | 53° 05.02' N    | 00° 23.44' E     |                        |

| <b>Restricted Area 19</b>   |                 |                  |                        |
|---|-----------------|------------------|------------------------|
| Restricted Area 19 is defined by a boundary drawn by the series of straight lines connecting each point listed in this table to the next point in sequence and finally returning to Point A, as set out in chart 2 for illustrative purposes. |                 |                  |                        |
| <b>Point</b>  | <b>Latitude</b> | <b>Longitude</b> | <b>Area (hectares)</b> |
| A.  | 53° 05.06' N    | 00° 25.57' E     | 287.7                  |
| B.  | 53° 04.96' N    | 00° 26.19' E     |                        |
| C.  | 53° 03.28' N    | 00° 25.55' E     |                        |
| D.  | 53° 03.37' N    | 00° 24.86' E     |                        |
| E.  | 53° 04.80' N    | 00° 25.19' E     |                        |

| <b>Restricted Area 20</b>   |                 |                  |                        |
|---|-----------------|------------------|------------------------|
| Restricted Area 20 is defined by a boundary drawn by the series of straight lines connecting each point listed in this table to the next point in sequence and finally returning to Point A, as set out in chart 2 for illustrative purposes. |                 |                  |                        |
| <b>Point</b>  | <b>Latitude</b> | <b>Longitude</b> | <b>Area (hectares)</b> |
| A.  | 53° 02.66' N    | 00° 29.46' E     | 2.7                    |
| B.  | 53° 02.66' N    | 00° 29.63' E     |                        |
| C.  | 53° 02.59' N    | 00° 29.63' E     |                        |
| D.  | 53° 02.59' N    | 00° 29.46' E     |                        |

## Closed Areas Byelaw 2021: Charts and Co-ordinates

| <b>Restricted Area 21</b>   |                 |                  |                        |
|---|-----------------|------------------|------------------------|
| Restricted Area 21 is defined by a boundary drawn by the series of straight lines connecting each point listed in this table to the next point in sequence and finally returning to Point A, as set out in chart 2 for illustrative purposes. |                 |                  |                        |
| <b>Point</b>  | <b>Latitude</b> | <b>Longitude</b> | <b>Area (hectares)</b> |
| A.  | 53° 03.86' N    | 00° 30.22' E     | 59.3                   |
| B.  | 53° 03.86' N    | 00° 30.48' E     |                        |
| C.  | 53° 03.67' N    | 00° 30.48' E     |                        |
| D.  | 53° 03.22' N    | 00° 30.15' E     |                        |
| E.  | 53° 03.22' N    | 00° 29.78' E     |                        |
| F.  | 53° 03.48' N    | 00° 29.78' E     |                        |

| <b>Restricted Area 22</b>   |                 |                  |                        |
|---|-----------------|------------------|------------------------|
| Restricted Area 22 is defined by a boundary drawn by the series of straight lines connecting each point listed in this table to the next point in sequence and finally returning to Point A, as set out in chart 2 for illustrative purposes. |                 |                  |                        |
| <b>Point</b>  | <b>Latitude</b> | <b>Longitude</b> | <b>Area (hectares)</b> |
| A.  | 53° 02.18' N    | 00° 22.57' E     | 52.7                   |
| B.  | 53° 02.19' N    | 00° 23.16' E     |                        |
| C.  | 53° 02.09' N    | 00° 23.30' E     |                        |
| D.  | 53° 01.87' N    | 00° 23.15' E     |                        |
| E.  | 53° 01.76' N    | 00° 22.80' E     |                        |
| F.  | 53° 01.85' N    | 00° 22.60' E     |                        |
| G.  | 53° 02.00' N    | 00° 22.49' E     |                        |

| <b>Restricted Area 23</b>   |                 |                  |                        |
|---|-----------------|------------------|------------------------|
| Restricted Area 23 is defined by a boundary drawn by the series of straight lines connecting each point listed in this table to the next point in sequence and finally returning to Point A, as set out in chart 2 for illustrative purposes. |                 |                  |                        |
| <b>Point</b>  | <b>Latitude</b> | <b>Longitude</b> | <b>Area (hectares)</b> |
| A.  | 52° 59.11' N    | 00° 27.46' E     | 2.4                    |
| B.  | 52° 59.06' N    | 00° 27.52' E     |                        |
| C.  | 52° 59.00' N    | 00° 27.38' E     |                        |
| D.  | 52° 59.06' N    | 00° 27.32' E     |                        |



## Closed Areas Byelaw 2021: Charts and Co-ordinates

| <b>Restricted Area 24</b>   |                 |                  |                        |
|---|-----------------|------------------|------------------------|
| Restricted Area 24 is defined by a boundary drawn by the series of straight lines connecting each point listed in this table to the next point in sequence and finally returning to Point A, as set out in chart 2 for illustrative purposes. |                 |                  |                        |
| <b>Point</b>  | <b>Latitude</b> | <b>Longitude</b> | <b>Area (hectares)</b> |
| A.  | 52° 57.17' N    | 00° 15.98' E     | 2.4                    |
| B.  | 52° 57.17' N    | 00° 16.08' E     |                        |
| C.  | 52° 57.06' N    | 00° 16.06' E     |                        |
| D.  | 52° 57.06' N    | 00° 15.94' E     |                        |

| <b>Restricted Area 25</b>   |                 |                  |                        |
|---|-----------------|------------------|------------------------|
| Restricted Area 25 is defined by a boundary drawn by the series of straight lines connecting each point listed in this table to the next point in sequence and finally returning to Point A, as set out in chart 2 for illustrative purposes. |                 |                  |                        |
| <b>Point</b>  | <b>Latitude</b> | <b>Longitude</b> | <b>Area (hectares)</b> |
| A.  | 52° 57.49' N    | 00° 17.20' E     | 1.6                    |
| B.  | 52° 57.51' N    | 00° 17.31' E     |                        |
| C.  | 52° 57.44' N    | 00° 17.34' E     |                        |
| D.  | 52° 57.43' N    | 00° 17.23' E     |                        |

| <b>Restricted Area 26</b>   |                 |                  |                        |
|---|-----------------|------------------|------------------------|
| Restricted Area 26 is defined by a boundary drawn by the series of straight lines connecting each point listed in this table to the next point in sequence and finally returning to Point A, as set out in chart 2 for illustrative purposes. |                 |                  |                        |
| <b>Point</b>  | <b>Latitude</b> | <b>Longitude</b> | <b>Area (hectares)</b> |
| A.  | 52° 57.85' N    | 00° 19.73' E     | 2.1                    |
| B.  | 52° 57.85' N    | 00° 19.96' E     |                        |
| C.  | 52° 57.81' N    | 00° 19.96' E     |                        |
| D.  | 52° 57.80' N    | 00° 19.74' E     |                        |

## Closed Areas Byelaw 2021: Charts and Co-ordinates

| <b>Restricted Area 27</b>   |                 |                  |                        |
|---|-----------------|------------------|------------------------|
| Restricted Area 27 is defined by a boundary drawn by the series of straight lines connecting each point listed in this table to the next point in sequence and finally returning to Point A, as set out in chart 2 for illustrative purposes. |                 |                  |                        |
| <b>Point</b>  | <b>Latitude</b> | <b>Longitude</b> | <b>Area (hectares)</b> |
| A.  | 52° 57.18' N    | 00° 22.07' E     | 47.3                   |
| B.  | 52° 57.14' N    | 00° 22.40' E     |                        |
| C.  | 52° 57.02' N    | 00° 22.44' E     |                        |
| D.  | 52° 56.81' N    | 00° 22.35' E     |                        |
| E.  | 52° 56.68' N    | 00° 22.13' E     |                        |
| F.  | 52° 56.69' N    | 00° 21.90' E     |                        |
| G.  | 52° 56.75' N    | 00° 21.88' E     |                        |
| H.  | 52° 57.03' N    | 00° 21.83' E     |                        |

| <b>Restricted Area 28</b>   |                 |                  |                        |
|---|-----------------|------------------|------------------------|
| Restricted Area 28 is defined by a boundary drawn by the series of straight lines connecting each point listed in this table to the next point in sequence and finally returning to Point A, as set out in chart 2 for illustrative purposes. |                 |                  |                        |
| <b>Point</b>  | <b>Latitude</b> | <b>Longitude</b> | <b>Area (hectares)</b> |
| A.  | 52° 57.87' N    | 00° 08.71' E     | 3.8                    |
| B.  | 52° 57.85' N    | 00° 08.81' E     |                        |
| C.  | 52° 57.82' N    | 00° 08.83' E     |                        |
| D.  | 52° 57.71' N    | 00° 08.65' E     |                        |
| E.  | 52° 57.73' N    | 00° 08.58' E     |                        |

| <b>Restricted Area 29</b>   |                 |                  |                        |
|---|-----------------|------------------|------------------------|
| Restricted Area 29 is defined by a boundary drawn by the series of straight lines connecting each point listed in this table to the next point in sequence and finally returning to Point A, as set out in chart 2 for illustrative purposes. |                 |                  |                        |
| <b>Point</b>  | <b>Latitude</b> | <b>Longitude</b> | <b>Area (hectares)</b> |
| A.  | 53° 04.10' N    | 00° 27.65' E     | 3446.0                 |
| B.  | 53° 03.65' N    | 00° 29.98' E     |                        |
| C.  | 53° 01.43' N    | 00° 27.35' E     |                        |
| D.  | 52° 59.83' N    | 00° 24.77' E     |                        |
| E.  | 52° 58.75' N    | 00° 24.60' E     |                        |
| F.  | 52° 58.32' N    | 00° 24.20' E     |                        |
| G.  | 52° 57.57' N    | 00° 22.13' E     |                        |
| H.  | 52° 58.23' N    | 00° 21.45' E     |                        |
| I.  | 52° 58.60' N    | 00° 21.47' E     |                        |
| J.  | 53° 00.22' N    | 00° 22.83' E     |                        |

| <b>Restricted Area 30</b>  |                 |                  |                        |
|--|-----------------|------------------|------------------------|
| Restricted Area 30 is defined by a straight line between points A and B in this table and the land boundary is to be taken as the mean high water springs mark, as set out in chart 3 for illustrative purposes. |                 |                  |                        |
| <b>Point</b>   | <b>Latitude</b> | <b>Longitude</b> | <b>Area (hectares)</b> |
| A.   | 52° 59.00' N    | 00° 40.03' E     | 51.69                  |
| B.   | 52° 58.63' N    | 00° 40.85' E     |                        |

## Closed Areas Byelaw 2021: Charts and Co-ordinates

| <b>Restricted Area 31</b>   |                 |                  |                        |
|---|-----------------|------------------|------------------------|
| <p>Restricted Area 31 is defined by a boundary drawn by a line connecting points A and B which follows the three nautical mile boundary (three nautical miles from the 1983 baseline) and a series of straight lines drawn in sequence between points B to I and finally returning to Point A as listed in this table, as set out in chart 3 for illustrative purposes.</p> |                 |                  |                        |
| <b>Point</b>  | <b>Latitude</b> | <b>Longitude</b> | <b>Area (hectares)</b> |
| A.  | 53° 02.58' N    | 00° 50.67' E     | 5922                   |
| B.  | 53° 01.65' N    | 01° 01.57' E     |                        |
| C.  | 52° 58.88' N    | 01° 01.60' E     |                        |
| D.  | 52° 59.16' N    | 01° 00.06' E     |                        |
| E.  | 52° 59.71' N    | 00° 55.55' E     |                        |
| F.  | 52° 59.86' N    | 00° 54.90' E     |                        |
| G.  | 52° 59.73' N    | 00° 53.81' E     |                        |
| H.  | 52° 59.79' N    | 00° 52.44' E     |                        |
| I.  | 52° 59.96' N    | 00° 50.70' E     |                        |

| <b>Restricted Area 32</b>  |                 |                  |                        |
|--|-----------------|------------------|------------------------|
| <p>Restricted Area 32 is defined by a boundary drawn by a line connecting points A and B which follows the land boundary which is to be taken as mean high water springs and a series of straight lines drawn in sequence between points B to O and finally returning to Point A, as set out in chart 3 for illustrative purposes.</p> |                 |                  |                        |
| <b>Point</b>   | <b>Latitude</b> | <b>Longitude</b> | <b>Area (hectares)</b> |
| A.   | 52° 57.47' N    | 00° 51.06' E     | 2189                   |
| B.   | 52° 58.26' N    | 01° 01.60' E     |                        |
| C.   | 52° 58.36' N    | 01° 01.60' E     |                        |
| D.   | 52° 59.11' N    | 00° 58.39' E     |                        |
| E.   | 52° 59.15' N    | 00° 57.26' E     |                        |
| F.   | 52° 58.80' N    | 00° 56.52' E     |                        |
| G.   | 52° 58.77' N    | 00° 55.57' E     |                        |
| H.   | 52° 58.88' N    | 00° 54.81' E     |                        |
| I.   | 52° 59.10' N    | 00° 54.22' E     |                        |
| J.   | 52° 59.28' N    | 00° 52.96' E     |                        |
| K.   | 52° 59.33' N    | 00° 51.90' E     |                        |
| L.   | 52° 59.54' N    | 00° 50.90' E     |                        |

## Closed Areas Byelaw 2021: Charts and Co-ordinates

|    |              |              |  |
|----|--------------|--------------|--|
| M. | 52° 59.54' N | 00° 50.71' E |  |
| N. | 52° 58.62' N | 00° 50.76' E |  |
| O. | 52° 58.40' N | 00° 51.03' E |  |

### Restricted Area 33 (Seasonal Restricted Area)

Restricted Area 33 is defined by a boundary drawn by the series of straight lines connecting each point listed in this table to the next point in sequence and finally returning to Point A, as set out in chart 3 for illustrative purposes.

| Point | Latitude     | Longitude    | Area (hectares) |
|-------|--------------|--------------|-----------------|
| A.    | 52° 59.96' N | 00° 50.70' E | 1217            |
| B.    | 52° 59.79' N | 00° 52.44' E |                 |
| C.    | 52° 59.73' N | 00° 53.81' E |                 |
| D.    | 52° 59.86' N | 00° 54.90' E |                 |
| E.    | 52° 59.71' N | 00° 55.55' E |                 |
| F.    | 52° 59.16' N | 01° 00.06' E |                 |
| G.    | 52° 58.88' N | 01° 01.60' E |                 |
| H.    | 52° 58.36' N | 01° 01.60' E |                 |
| I.    | 52° 59.11' N | 00° 58.39' E |                 |
| J.    | 52° 59.15' N | 00° 57.26' E |                 |
| K.    | 52° 58.80' N | 00° 56.52' E |                 |
| L.    | 52° 58.77' N | 00° 55.57' E |                 |
| M.    | 52° 58.88' N | 00° 54.81' E |                 |
| N.    | 52° 59.10' N | 00° 54.22' E |                 |
| O.    | 52° 59.28' N | 00° 52.96' E |                 |
| P.    | 52° 59.33' N | 00° 51.90' E |                 |
| Q.    | 52° 59.54' N | 00° 50.90' E |                 |
| R.    | 52° 59.54' N | 00° 50.71' E |                 |
| S.    | 52° 59.96' N | 00° 50.70' E |                 |

### Restricted Area 34

Restricted Area 34 is defined by a boundary drawn connecting points A and B with a straight line followed by connecting points B to C with a line which follows the three nautical mile boundary (three nautical miles from the 1983 baseline), followed by a straight line drawn between points C and D and finally by a line returning to Point A following the mean high-water springs mark, as set out in chart 3 for illustrative purposes.

| Point | Latitude     | Longitude    | Area (hectares) |
|-------|--------------|--------------|-----------------|
| A.    | 52° 58.25' N | 01° 01.61' E | 3826            |

## Closed Areas Byelaw 2021: Charts and Co-ordinates

|    |              |              |  |
|----|--------------|--------------|--|
| B. | 53° 01.65' N | 01° 01.60' E |  |
| C. | 53° 00.31' N | 01° 07.35' E |  |
| D. | 52° 57.14' N | 01° 07.13' E |  |

| <b>Restricted Area 35</b>   |                 |                  |                        |
|---|-----------------|------------------|------------------------|
| <p>Restricted Area 35 is defined by a boundary drawn by the series of straight lines connecting each point listed in this table to the next point in sequence and finally returning to Point A following the mean high-water springs mark, as set out in chart 4 for illustrative purposes.</p> |                 |                  |                        |
| <b>Point</b>  | <b>Latitude</b> | <b>Longitude</b> | <b>Area (hectares)</b> |
| A.  | 52° 57.15' N    | 01° 07.10' E     | 29930                  |
| B.  | 53° 02.74' N    | 01° 07.52' E     |                        |
| C.  | 53° 01.41' N    | 01° 18.73' E     |                        |
| D.  | 53° 01.30' N    | 01° 19.23' E     |                        |
| E.  | 53° 01.20' N    | 01° 19.65' E     |                        |
| F.  | 53° 01.12' N    | 01° 19.89' E     |                        |
| G.  | 53° 01.05' N    | 01° 20.11' E     |                        |
| H.  | 53° 00.96' N    | 01° 20.32' E     |                        |
| I.  | 53° 00.86' N    | 01° 20.54' E     |                        |
| J.  | 52° 58.74' N    | 01° 26.36' E     |                        |
| K.  | 52° 58.36' N    | 01° 27.24' E     |                        |
| L.  | 52° 57.71' N    | 01° 28.60' E     |                        |
| M.  | 52° 57.25' N    | 01° 29.41' E     |                        |
| N.  | 52° 56.98' N    | 01° 29.80' E     |                        |
| O.  | 52° 56.71' N    | 01° 30.13' E     |                        |
| P.  | 52° 56.27' N    | 01° 30.57' E     |                        |
| Q.  | 52° 55.83' N    | 01° 30.93' E     |                        |
| R.  | 52° 55.42' N    | 01° 31.20' E     |                        |
| S.  | 52° 55.00' N    | 01° 31.42' E     |                        |
| T.  | 52° 54.65' N    | 01° 31.58' E     |                        |
| U.  | 52° 54.37' N    | 01° 31.68' E     |                        |
| V.  | 52° 54.00' N    | 01° 31.79' E     |                        |
| W.  | 52° 53.44' N    | 01° 31.90' E     |                        |
| X.  | 52° 51.86' N    | 01° 33.80' E     |                        |
| Y.  | 52° 49.40' N    | 01° 32.46' E     |                        |

| <b>Restricted Area 36</b>   |                 |                  |                        |
|---|-----------------|------------------|------------------------|
| Restricted Area 36 is defined by a boundary drawn by the series of straight lines connecting each point listed in this table to the next point in sequence and finally returning to Point A, as set out in chart 5 for illustrative purposes. |                 |                  |                        |
| <b>Point</b>  | <b>Latitude</b> | <b>Longitude</b> | <b>Area (hectares)</b> |
| A.  | 52° 48.53' N    | 01° 47.07' E     | 189.8                  |
| B.  | 52° 48.22' N    | 01° 48.40' E     |                        |
| C.  | 52° 48.05' N    | 01° 48.64' E     |                        |
| D.  | 52° 47.69' N    | 01° 48.56' E     |                        |
| E.  | 52° 47.70' N    | 01° 47.70' E     |                        |
| F.  | 52° 47.82' N    | 01° 47.40' E     |                        |
| G.  | 52° 48.06' N    | 01° 47.06' E     |                        |
| H.  | 52° 48.32' N    | 01° 46.96' E     |                        |

| <b>Restricted Area 37</b>   |                 |                  |                        |
|---|-----------------|------------------|------------------------|
| Restricted Area 37 is defined by a boundary drawn by the series of straight lines connecting each point listed in this table to the next point in sequence and finally returning to Point A, as set out in chart 5 for illustrative purposes. |                 |                  |                        |
| <b>Point</b>  | <b>Latitude</b> | <b>Longitude</b> | <b>Area (hectares)</b> |
| A.  | 52° 42.11' N    | 01° 48.33' E     | 1401                   |
| B.  | 52° 42.45' N    | 01° 49.86' E     |                        |
| C.  | 52° 41.38' N    | 01° 51.00' E     |                        |
| D.  | 52° 40.57' N    | 01° 51.23' E     |                        |
| E.  | 52° 40.16' N    | 01° 51.27' E     |                        |
| F.  | 52° 39.22' N    | 01° 50.30' E     |                        |
| G.  | 52° 38.87' N    | 01° 49.97' E     |                        |
| H.  | 52° 38.87' N    | 01° 49.78' E     |                        |
| I.  | 52° 39.83' N    | 01° 49.33' E     |                        |
| J.  | 52° 40.17' N    | 01° 48.78' E     |                        |
| K.  | 52° 40.62' N    | 01° 48.57' E     |                        |
| L.  | 52° 41.68' N    | 01° 48.31' E     |                        |

## Closed Areas Byelaw 2021: Charts and Co-ordinates

### Restricted Area 38

Restricted Area 38 is defined by a boundary drawn by the series of straight lines connecting each point listed in this table to the next point in sequence and finally returning to Point A, as set out in chart 5 for illustrative purposes.

| Point | Latitude     | Longitude    | Area (hectares) |
|-------|--------------|--------------|-----------------|
| A.    | 52° 37.16' N | 01° 54.34' E | 2237            |
| B.    | 52° 39.92' N | 01° 53.25' E |                 |
| C.    | 52° 40.54' N | 01° 53.28' E |                 |
| D.    | 52° 41.43' N | 01° 53.75' E |                 |
| E.    | 52° 41.62' N | 01° 54.49' E |                 |
| F.    | 52° 41.37' N | 01° 55.29' E |                 |
| G.    | 52° 39.86' N | 01° 56.70' E |                 |
| H.    | 52° 39.22' N | 01° 56.76' E |                 |
| I.    | 52° 38.52' N | 01° 56.55' E |                 |
| J.    | 52° 37.83' N | 01° 56.26' E |                 |

### Area 39

Restricted Area 39 is defined by a boundary drawn by the series of straight lines connecting each point listed in this table to the next point in sequence, as set out in Chart 6 for illustrative purposes.

| Point | Latitude     | Longitude    | Area (hectares) |
|-------|--------------|--------------|-----------------|
| A.    | 53° 29.88' N | 00° 05.46' E | 9.2             |
| B.    | 53° 29.88' N | 00° 05.81' E |                 |
| C.    | 53° 29.75' N | 00° 05.81' E |                 |
| D.    | 53° 29.75' N | 00° 05.46' E |                 |



## Closed Areas Byelaw 2021: Charts and Co-ordinates

| <b>Restricted Area 40</b>   |                 |                  |                        |
|---|-----------------|------------------|------------------------|
| Restricted Area 40 is defined by a boundary drawn by the series of straight lines connecting each point listed in this table to the next point in sequence and finally returning to Point A, as set out in chart 7 for illustrative purposes. |                 |                  |                        |
| <b>Point</b>  | <b>Latitude</b> | <b>Longitude</b> | <b>Area (hectares)</b> |
| A.  | 53° 05.93' N    | 00° 25.67' E     | 71.75                  |
| B.  | 53° 05.93' N    | 00° 25.87' E     |                        |
| C.  | 53° 05.82' N    | 00° 26.10' E     |                        |
| D.  | 53° 05.65' N    | 00° 26.19' E     |                        |
| E.  | 53° 05.47' N    | 00° 26.09' E     |                        |
| F.  | 53° 05.38' N    | 00° 25.64' E     |                        |
| G.  | 53° 05.41' N    | 00° 25.41' E     |                        |
| H.  | 53° 05.45' N    | 00° 25.30' E     |                        |
| I.  | 53° 05.66' N    | 00° 25.45' E     |                        |
| J.  | 53° 05.68' N    | 00° 25.29' E     |                        |
| K.  | 53° 05.76' N    | 00° 25.32' E     |                        |
| L.  | 53° 05.76' N    | 00° 25.48' E     |                        |

| <b>Restricted Area 41</b>   |                 |                  |                        |
|---|-----------------|------------------|------------------------|
| Restricted Area 41 is defined by a boundary drawn by the series of straight lines connecting each point listed in this table to the next point in sequence and finally returning to Point A, as set out in chart 7 for illustrative purposes. |                 |                  |                        |
| <b>Point</b>  | <b>Latitude</b> | <b>Longitude</b> | <b>Area (hectares)</b> |
| A.  | 53° 04.56' N    | 00° 27.13' E     | 11.76                  |
| B.  | 53° 04.54' N    | 00° 27.19' E     |                        |
| C.  | 53° 04.52' N    | 00° 27.24' E     |                        |
| D.  | 53° 04.40' N    | 00° 27.44' E     |                        |
| E.  | 53° 04.35' N    | 00° 27.41' E     |                        |
| F.  | 53° 04.34' N    | 00° 27.31' E     |                        |
| G.  | 53° 04.37' N    | 00° 27.05' E     |                        |
| H.  | 53° 04.41' N    | 00° 27.01' E     |                        |

## Closed Areas Byelaw 2021: Charts and Co-ordinates

| <b>Restricted Area 42</b>   |                 |                  |                        |
|---|-----------------|------------------|------------------------|
| Restricted Area 42 is defined by a boundary drawn by the series of straight lines connecting each point listed in this table to the next point in sequence and finally returning to Point A, as set out in chart 7 for illustrative purposes. |                 |                  |                        |
| <b>Point</b>  | <b>Latitude</b> | <b>Longitude</b> | <b>Area (hectares)</b> |
| A.  | 53° 05.12' N    | 00° 27.13' E     | 1.71                   |
| B.  | 53° 05.12' N    | 00° 27.24' E     |                        |
| C.  | 53° 05.04' N    | 00° 27.24' E     |                        |
| D.  | 53° 05.04' N    | 00° 27.13' E     |                        |

| <b>Restricted Area 43</b>   |                 |                  |                        |
|---|-----------------|------------------|------------------------|
| Restricted Area 43 is defined by a boundary drawn by the series of straight lines connecting each point listed in this table to the next point in sequence and finally returning to Point A, as set out in chart 7 for illustrative purposes. |                 |                  |                        |
| <b>Point</b>  | <b>Latitude</b> | <b>Longitude</b> | <b>Area (hectares)</b> |
| A.  | 53° 05.67' N    | 00° 26.92' E     | 5.42                   |
| B.  | 53° 05.68' N    | 00° 26.96' E     |                        |
| C.  | 53° 05.60' N    | 00° 27.08' E     |                        |
| D.  | 53° 05.54' N    | 00° 27.05' E     |                        |
| E.  | 53° 05.49' N    | 00° 26.98' E     |                        |
| F.  | 53° 05.56' N    | 00° 26.85' E     |                        |

| <b>Restricted Area 44</b>   |                 |                  |                        |
|---|-----------------|------------------|------------------------|
| Restricted Area 44 is defined by a boundary drawn by the series of straight lines connecting each point listed in this table to the next point in sequence and finally returning to Point A, as set out in chart 7 for illustrative purposes. |                 |                  |                        |
| <b>Point</b>  | <b>Latitude</b> | <b>Longitude</b> | <b>Area (hectares)</b> |
| A.  | 53° 05.98' N    | 00° 26.62' E     | 5.72                   |
| B.  | 53° 05.97' N    | 00° 26.70' E     |                        |
| C.  | 53° 05.86' N    | 00° 26.81' E     |                        |
| D.  | 53° 05.82' N    | 00° 26.74' E     |                        |
| E.  | 53° 05.83' N    | 00° 26.65' E     |                        |
| F.  | 53° 05.86' N    | 00° 26.56' E     |                        |
| G.  | 53° 05.92' N    | 00° 26.53' E     |                        |

## Closed Areas Byelaw 2021: Charts and Co-ordinates

| <b>Restricted Area 45</b>   |                 |                  |                        |
|---|-----------------|------------------|------------------------|
| Restricted Area 45 is defined by a boundary drawn by the series of straight lines connecting each point listed in this table to the next point in sequence and finally returning to Point A, as set out in chart 7 for illustrative purposes. |                 |                  |                        |
| <b>Point</b>  | <b>Latitude</b> | <b>Longitude</b> | <b>Area (hectares)</b> |
| A.  | 53° 06.12' N    | 00° 27.26' E     | 15.53                  |
| B.  | 53° 06.10' N    | 00° 27.42' E     |                        |
| C.  | 53° 06.04' N    | 00° 27.41' E     |                        |
| D.  | 53° 05.84' N    | 00° 27.12' E     |                        |
| E.  | 53° 05.81' N    | 00° 27.00' E     |                        |
| F.  | 53° 05.88' N    | 00° 26.87' E     |                        |

| <b>Restricted Area 46</b>   |                 |                  |                        |
|---|-----------------|------------------|------------------------|
| Restricted Area 46 is defined by a boundary drawn by the series of straight lines connecting each point listed in this table to the next point in sequence and finally returning to Point A, as set out in chart 7 for illustrative purposes. |                 |                  |                        |
| <b>Point</b>  | <b>Latitude</b> | <b>Longitude</b> | <b>Area (hectares)</b> |
| A.  | 53° 06.15' N    | 00° 27.82' E     | 18.90                  |
| B.  | 53° 06.15' N    | 00° 27.95' E     |                        |
| C.  | 53° 06.02' N    | 00° 28.21' E     |                        |
| D.  | 53° 05.95' N    | 00° 28.28' E     |                        |
| E.  | 53° 05.90' N    | 00° 28.26' E     |                        |
| F.  | 53° 05.86' N    | 00° 28.12' E     |                        |
| G.  | 53° 05.91' N    | 00° 27.83' E     |                        |

| <b>Restricted Area 47</b>   |                 |                  |                        |
|---|-----------------|------------------|------------------------|
| Restricted Area 47 is defined by a boundary drawn by the series of straight lines connecting each point listed in this table to the next point in sequence and finally returning to Point A, as set out in chart 7 for illustrative purposes. |                 |                  |                        |
| <b>Point</b>  | <b>Latitude</b> | <b>Longitude</b> | <b>Area (hectares)</b> |
| A.  | 53° 06.10' N    | 00° 29.29' E     | 17.23                  |
| B.  | 53° 06.09' N    | 00° 29.50' E     |                        |
| C.  | 53° 05.89' N    | 00° 29.44' E     |                        |
| D.  | 53° 05.81' N    | 00° 29.35' E     |                        |
| E.  | 53° 05.81' N    | 00° 29.12' E     |                        |

## Closed Areas Byelaw 2021: Charts and Co-ordinates

|    |              |              |  |
|----|--------------|--------------|--|
| F. | 53° 05.97' N | 00° 29.12' E |  |
|----|--------------|--------------|--|

| <b>Restricted Area 48</b>   |              |              |                 |
|---|--------------|--------------|-----------------|
| Restricted Area 48 is defined by a boundary drawn by the series of straight lines connecting each point listed in this table to the next point in sequence and finally returning to Point A, as set out in chart 7 for illustrative purposes. |              |              |                 |
| Point   | Latitude     | Longitude    | Area (hectares) |
| A.  | 53° 07.16' N | 00° 29.67' E | 6.15            |
| B.  | 53° 07.19' N | 00° 29.95' E |                 |
| C.  | 53° 07.13' N | 00° 29.99' E |                 |
| D.  | 53° 07.05' N | 00° 29.80' E |                 |
| E.  | 53° 07.05' N | 00° 29.66' E |                 |

| <b>Restricted Area 49</b>   |              |              |                 |
|---|--------------|--------------|-----------------|
| Restricted Area 49 is defined by a boundary drawn by the series of straight lines connecting each point listed in this table to the next point in sequence and finally returning to Point A, as set out in chart 7 for illustrative purposes. |              |              |                 |
| Point   | Latitude     | Longitude    | Area (hectares) |
| A.  | 53° 06.56' N | 00° 26.31' E | 3.22            |
| B.  | 53° 06.57' N | 00° 26.40' E |                 |
| C.  | 53° 06.54' N | 00° 26.41' E |                 |
| D.  | 53° 06.51' N | 00° 26.40' E |                 |
| E.  | 53° 06.45' N | 00° 26.26' E |                 |
| F.  | 53° 06.46' N | 00° 26.21' E |                 |
| G.  | 53° 06.49' N | 00° 26.19' E |                 |
| H.  | 53° 06.53' N | 00° 26.22' E |                 |

| <b>Restricted Area 50</b>   |              |              |                 |
|---|--------------|--------------|-----------------|
| Restricted Area 50 is defined by a boundary drawn by the series of straight lines connecting each point listed in this table to the next point in sequence and finally returning to Point A, as set out in chart 7 for illustrative purposes. |              |              |                 |
| Point   | Latitude     | Longitude    | Area (hectares) |
| A.  | 53° 06.62' N | 00° 24.94' E | 2.39            |
| B.  | 53° 06.61' N | 00° 25.05' E |                 |
| C.  | 53° 06.54' N | 00° 25.04' E |                 |
| D.  | 53° 06.53' N | 00° 25.01' E |                 |

## Closed Areas Byelaw 2021: Charts and Co-ordinates

|    |              |              |  |
|----|--------------|--------------|--|
| E. | 53° 06.52' N | 00° 24.97' E |  |
| F. | 53° 06.57' N | 00° 24.89' E |  |
| G. | 53° 06.59' N | 00° 24.90' E |  |

## Closed Areas Byelaw 2021: Charts and Co-ordinates

| <b>Restricted Area 51</b>   |                 |                  |                        |
|---|-----------------|------------------|------------------------|
| Restricted Area 51 is defined by a boundary drawn by the series of straight lines connecting each point listed in this table to the next point in sequence and finally returning to Point A, as set out in chart 7 for illustrative purposes. |                 |                  |                        |
| <b>Point</b>  | <b>Latitude</b> | <b>Longitude</b> | <b>Area (hectares)</b> |
| A.  | 53° 08.98' N    | 00° 24.79' E     | 107.1                  |
| B.  | 53° 08.92' N    | 00° 25.13' E     |                        |
| C.  | 53° 08.77' N    | 00° 25.33' E     |                        |
| D.  | 53° 08.63' N    | 00° 25.40' E     |                        |
| E.  | 53° 08.40' N    | 00° 25.29' E     |                        |
| F.  | 53° 08.30' N    | 00° 25.11' E     |                        |
| G.  | 53° 08.26' N    | 00° 24.87' E     |                        |
| H.  | 53° 08.30' N    | 00° 24.64' E     |                        |
| I.  | 53° 08.40' N    | 00° 24.46' E     |                        |
| J.  | 53° 08.55' N    | 00° 24.39' E     |                        |
| K.  | 53° 08.77' N    | 00° 24.50' E     |                        |

| <b>Restricted Area 52</b>   |                 |                  |                        |
|---|-----------------|------------------|------------------------|
| Restricted Area 52 is defined by a boundary drawn by the series of straight lines connecting each point listed in this table to the next point in sequence and finally returning to Point A, as set out in chart 2 for illustrative purposes. |                 |                  |                        |
| <b>Point</b>  | <b>Latitude</b> | <b>Longitude</b> | <b>Area (hectares)</b> |
| A.  | 53° 00.42' N    | 00° 22.35' E     | 86.18                  |
| B.  | 53° 00.23' N    | 00° 22.74' E     |                        |
| C.  | 52° 59.66' N    | 00° 21.90' E     |                        |
| D.  | 52° 59.87' N    | 00° 21.44' E     |                        |

## Closed Areas Byelaw 2021: Charts and Co-ordinates

| <b>Restricted Area 53</b>   |              |              |                 |
|---|--------------|--------------|-----------------|
| Restricted Area 53 is defined by a boundary drawn by the series of straight lines connecting each point listed in this table to the next point in sequence and finally returning to Point A, as set out in chart 1 for illustrative purposes. |              |              |                 |
| Point   | Latitude     | Longitude    | Area (hectares) |
| A.  | 52° 51.33' N | 00° 15.45' E | 5.8             |
| B.  | 52° 51.33' N | 00° 15.60' E |                 |
| C.  | 52° 51.17' N | 00° 15.75' E |                 |
| D.  | 52° 51.17' N | 00° 15.57' E |                 |

| <b>Restricted Area 54</b>   |              |              |                 |
|---|--------------|--------------|-----------------|
| Restricted Area 54 is defined by a boundary drawn by the series of straight lines connecting each point listed in this table to the next point in sequence and finally returning to Point A, as set out in chart 7 for illustrative purposes. |              |              |                 |
| Point   | Latitude     | Longitude    | Area (hectares) |
| A.  | 53° 09.28' N | 00° 27.61' E | 21.86           |
| B.  | 53° 09.33' N | 00° 27.89' E |                 |
| C.  | 53° 09.07' N | 00° 27.77' E |                 |
| D.  | 53° 09.08' N | 00° 27.19' E |                 |
| E.  | 53° 09.13' N | 00° 27.21' E |                 |

| <b>Restricted Area 55</b>   |              |              |                 |
|---|--------------|--------------|-----------------|
| Restricted Area 55 is defined by a boundary drawn by the series of straight lines connecting each point listed in this table to the next point in sequence and finally returning to Point A, as set out in chart 7 for illustrative purposes. |              |              |                 |
| Point   | Latitude     | Longitude    | Area (hectares) |
| A.  | 53° 10.00' N | 00° 26.20' E | 36.46           |
| B.  | 53° 10.00' N | 00° 26.79' E |                 |
| C.  | 53° 09.94' N | 00° 26.82' E |                 |
| D.  | 53° 09.64' N | 00° 26.58' E |                 |
| E.  | 53° 09.64' N | 00° 26.29' E |                 |
| F.  | 53° 09.76' N | 00° 26.23' E |                 |

## Closed Areas Byelaw 2021: Charts and Co-ordinates

### Restricted Area 56

Restricted Area 56 is defined by a boundary drawn by the series of straight lines connecting each point listed in this table to the next point in sequence and finally returning to Point A, as set out in chart 7 for illustrative purposes.

**Please note:** coordinate 'M' for area 56 was added in error and is not part of the boundary for the closed area. It will be removed prior to the byelaw being finalised.

| Point | Latitude     | Longitude    | Area (hectares) |
|-------|--------------|--------------|-----------------|
| A.    | 53° 09.65' N | 00° 25.19' E | 76.41           |
| B.    | 53° 09.61' N | 00° 25.43' E |                 |
| C.    | 53° 09.51' N | 00° 25.60' E |                 |
| D.    | 53° 09.37' N | 00° 25.66' E |                 |
| E.    | 53° 09.22' N | 00° 25.60' E |                 |
| F.    | 53° 09.12' N | 00° 25.42' E |                 |
| G.    | 53° 09.08' N | 00° 25.19' E |                 |
| H.    | 53° 09.12' N | 00° 24.96' E |                 |
| I.    | 53° 09.18' N | 00° 24.85' E |                 |
| J.    | 53° 09.40' N | 00° 24.79' E |                 |
| K.    | 53° 09.55' N | 00° 24.92' E |                 |
| L.    | 53° 09.63' N | 00° 25.09' E |                 |
| M.    | 53° 09.33' N | 00° 25.23' E |                 |

### Restricted Area 57

Restricted Area 57 is defined by a boundary drawn by the series of straight lines connecting each point listed in this table to the next point in sequence and finally returning to Point A, as set out in chart 7 for illustrative purposes.

| Point | Latitude     | Longitude    | Area (hectares) |
|-------|--------------|--------------|-----------------|
| A.    | 53° 06.09' N | 00° 25.08' E | 26.98           |
| B.    | 53° 06.09' N | 00° 25.24' E |                 |
| C.    | 53° 06.02' N | 00° 25.28' E |                 |
| D.    | 53° 05.84' N | 00° 25.35' E |                 |
| E.    | 53° 05.75' N | 00° 25.01' E |                 |
| F.    | 53° 05.76' N | 00° 24.81' E |                 |
| G.    | 53° 05.89' N | 00° 24.79' E |                 |



## Closed Areas Byelaw 2021: Charts and Co-ordinates

| <b>Restricted Area 58</b>   |                 |                  |                        |
|---|-----------------|------------------|------------------------|
| Restricted Area 58 is defined by a boundary drawn by the series of straight lines connecting each point listed in this table to the next point in sequence and finally returning to Point A, as set out in chart 7 for illustrative purposes. |                 |                  |                        |
| <b>Point</b>  | <b>Latitude</b> | <b>Longitude</b> | <b>Area (hectares)</b> |
| A.  | 53° 05.69' N    | 00° 25.11' E     | 9.167                  |
| B.  | 53° 05.53' N    | 00° 25.27' E     |                        |
| C.  | 53° 05.45' N    | 00° 25.20' E     |                        |
| D.  | 53° 05.57' N    | 00° 24.89' E     |                        |

| <b>Restricted Area 59</b>   |                 |                  |                        |
|---|-----------------|------------------|------------------------|
| Restricted Area 59 is defined by a boundary drawn by the series of straight lines connecting each point listed in this table to the next point in sequence and finally returning to Point A, as set out in chart 4 for illustrative purposes. |                 |                  |                        |
| <b>Point</b>  | <b>Latitude</b> | <b>Longitude</b> | <b>Area (hectares)</b> |
| A.  | 52° 51.90' N    | 01° 28.38' E     | 12                     |
| B.  | 52° 51.91' N    | 01° 28.49' E     |                        |
| C.  | 52° 52.18' N    | 01° 28.31' E     |                        |
| D.  | 52° 52.16' N    | 01° 28.23' E     |                        |
| E.  | 52° 52.01' N    | 01° 28.11' E     |                        |

| <b>Restricted Area 60</b>   |                 |                  |                        |
|---|-----------------|------------------|------------------------|
| Restricted Area 60 is defined by a boundary drawn by the series of straight lines connecting each point listed in this table to the next point in sequence and finally returning to Point A, as set out in chart 4 for illustrative purposes. |                 |                  |                        |
| <b>Point</b>  | <b>Latitude</b> | <b>Longitude</b> | <b>Area (hectares)</b> |
| A.  | 52° 51.18' N    | 01° 30.69' E     | 114                    |
| B.  | 52° 50.72' N    | 01° 31.59' E     |                        |
| C.  | 52° 50.47' N    | 01° 31.49' E     |                        |
| D.  | 52° 50.22' N    | 01° 31.37' E     |                        |
| E.  | 52° 50.35' N    | 01° 31.07' E     |                        |
| F.  | 52° 50.62' N    | 01° 30.65' E     |                        |

### Artisanal Shrimp Management Area

The Artisanal Shrimp Management Area is defined by a boundary drawn by the series of straight lines connecting each point listed in this table to the next point in sequence and finally returning to Point A, as set out in chart 4 for illustrative purposes.

| Point | Latitude     | Longitude    | Area (hectares) |
|-------|--------------|--------------|-----------------|
| A.    | 52° 52.84' N | 01° 27.45' E | 1032            |
| B.    | 52° 50.08' N | 01° 32.84' E |                 |
| C.    | 52° 49.36' N | 01° 32.45' E |                 |
| D.    | 52° 52.52' N | 01° 26.47' E |                 |