

Closed Areas Byelaw 2021 Formal Consultation - Summary



Eastern Inshore Fisheries and Conservation Authority (Eastern IFCA) has made the **Closed Areas Byelaw 2021**, which will restrict certain fishing activities in some areas within five marine protected areas in the Eastern IFC District.

This consultation provides an opportunity to comment on or object to the byelaw before it is finalised. **This consultation will close on 4th February 2022.**

What is being proposed?

The Closed Areas Byelaw 2021 will introduce new restricted areas within some parts of five marine protected areas (MPAs) where certain types of fishing will not be permitted. Bottom-towed fishing (e.g. trawling or dredging) will **not be permitted** in any of the restricted areas and in areas 53 and 39, crab-tiling and handworking will also **not be permitted**. Limited shrimp fishing will be allowed to continue within the Artisanal Shrimp Management Area (chart 4) in accordance with the policy for managing this activity ([read the policy here](#)).

The byelaw will replace the [Marine Protected Areas Byelaw 2018](#) (MPA Byelaw 2018). The restricted areas that are already in place under that byelaw will remain unchanged under the new byelaw, except for area 39 in the Humber Estuary that is reduced in size, area 19 in The Wash that has been extended, and area 16 in The Wash whose shape has been amended without impacting its overall size or general location.

The new restricted areas and the amended areas are shown in the [charts](#) below.

The wording of the draft Closed Areas Byelaw 2021 can be found [here](#) (*note, coordinate 'M' for area 56 was added in error and is not part of the boundary for the closed area*).

Why is a new byelaw needed?

Bottom-towed fishing, and in some cases crab-tiling and handworking, can have long-term, damaging effects on seabed habitats. Eastern IFCA is required by law to manage activities to protect designated habitats within MPAs, in accordance with conservation targets.

The closed areas proposed in this byelaw will prevent damage from fishing activity to a range of protected features, including eelgrass beds, *Sabellaria* reef, intertidal mussel beds, subtidal mixed sediment and muds, subtidal rocky habitat, subtidal chalk, and peat and clay exposures.

Since 2019 Eastern IFCA has held several consultations on additional proposed areas and amendments to the MPA Byelaw 2018. These new areas and amendments have been consolidated into the Closed Areas Byelaw 2021, taking into account feedback

that we received from our stakeholders during these consultations. You can [read more about the responses we received to the most recent informal consultation in June 2021 here](#).

How will the byelaw affect fishing activity?

If you fish using bottom-towed gear you will not be able to do so in the restricted areas. You will also not be able to fish by hand working or crab tiling in areas 39 and 53.

Push netting activity will be allowed to continue. Limited shrimp fishing will be allowed to continue within the Artisanal Shrimp Management Area (chart 4) in accordance with the [policy](#) for managing this activity. Definitions of these activities are presented in the byelaw.

You will be required to lash and stow gear when transiting the areas unless you have been fishing up to or immediately after the boundary of the area and your beam is hoisted from the water without gear in contact with the seabed.

Where are the closed areas?

All charts showing the location of the closed areas in place and proposed can be found below. Co-ordinates for the areas can be found [here](#) (*note, coordinate 'M' for area 56 was added in error and is not part of the boundary for the closed area*). Additionally there are shapefiles available showing the restricted areas. To obtain this data, or to request printed copies of charts or coordinates please [contact us](#).

Will the measures be reviewed?

All management measures introduced under a byelaw are subject to periodic review in order to ensure that the measures are effective and remain relevant. Eastern IFCA strives to ensure our understanding of the distribution of designated habitats is kept up to date. In addition to undertaking bespoke surveys where resources allow, we scrutinise the six-monthly feature data updates provided by Natural England, alongside engagement with stakeholders.

Where can I find more information?

Rationale for the proposals, the working of the byelaw, full co-ordinates of all of the restricted areas (existing and new) and the Impact Assessment for the byelaw are available on the Eastern IFCA website. For further information you are welcome to speak to Eastern IFCA officers in person where possible, by phone (01553) 775321, or by email mail@eastern-ifca.gov.uk

How can I have my say?

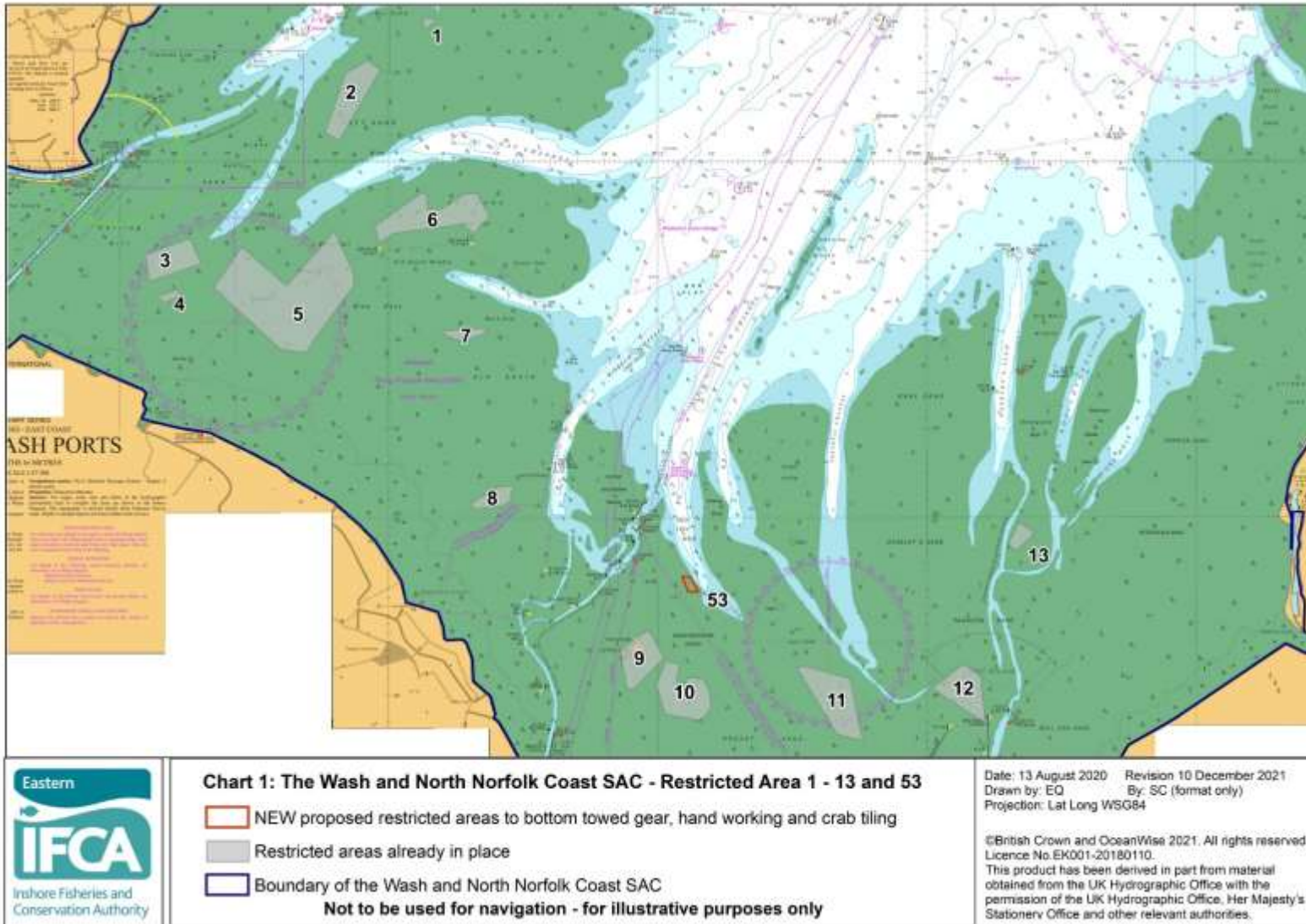
Please send responses by **4th February 2022** to Eastern IFCA **and the MMO** by post or email:

CEO, Eastern Inshore Fisheries & Conservation Authority, Unit 6 North Lynn Business Village, Bergen Way, King's Lynn, Norfolk, PE30 2JG.

Email: mail@eastern-ifca.gov.uk

Please also send a copy of your response to the MMO: Marine Conservation and Enforcement Team, Marine Management Organisation, Lancaster House, Hampshire Court, Newcastle-Upon-Tyne, NE4 7HY

Email: IFCAbyelaws@marinemanagement.org.uk



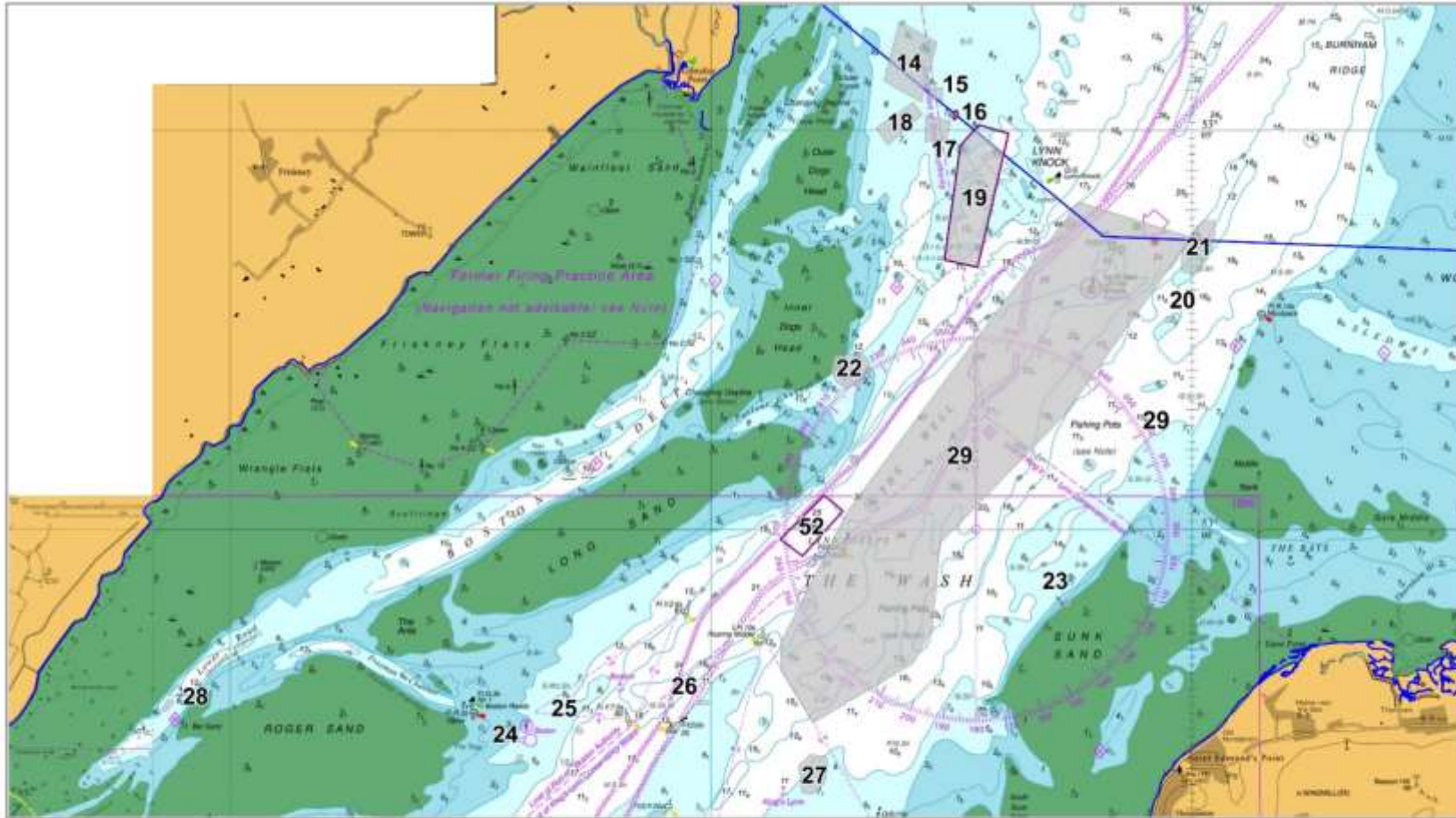


Chart 2: The Wash and North Norfolk Coast SAC – Restricted Areas 14 to 29 and 52

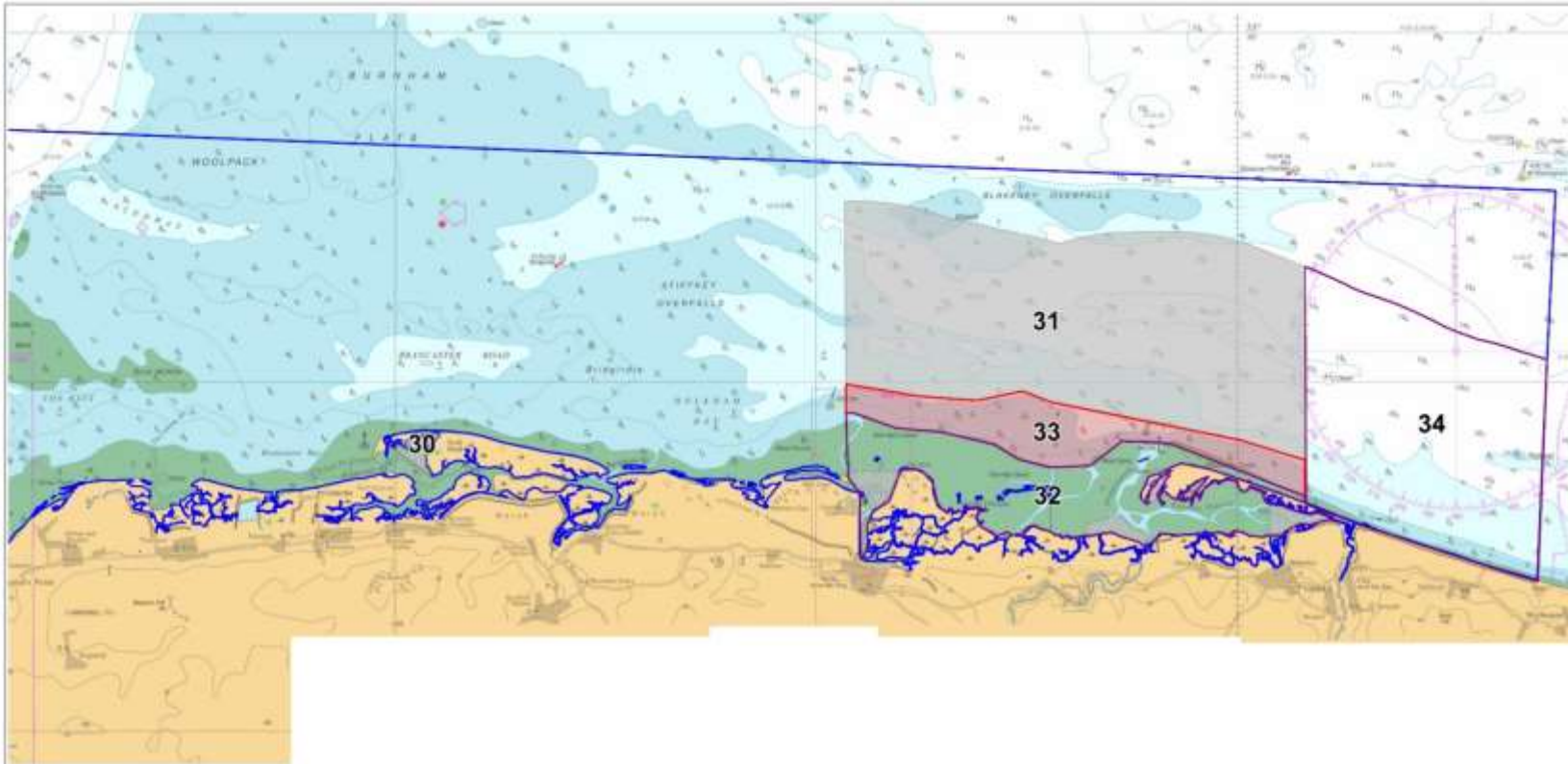
- NEW proposed restricted areas to bottom towed gear
- Restricted areas already in place
- The Wash and North Norfolk Coast SAC boundary

Not to be used for navigation – for illustrative purposes only

Contains public sector information licensed under the Open Government Licence v1.0 (c) British Crown and Ordnance Survey 2021. All rights reserved. Licence No. DG301-20180110. This product has been derived in part from material obtained from the UK Hydrographic Office with the permission of the UK Hydrographic Office, Her Majesty's Stationary Office and other relevant authorities.

Date: 02/12/2021
 Drawn by: SC
 Projection: Lat Long WSG84
 EMS boundary: JNCC download -
 UK_SACs_withMarineComponents_2103821

Chart_2_Areas_14_29_and_52_Final_consultation.WOR



Not to be used for navigation – for illustrative purposes only

Contains public sector information licensed under the Open Government Licence v1.0 (c) British Crown and Copyright 2021. All rights reserved. Licence No: EN001-20190110. This product has been derived in part from material obtained from the UK Hydrographic Office with the permission of the UK Hydrographic Office, Her Majesty's Stationery Office and other relevant authorities.

Chart 3: The Wash and North Norfolk Coast SAC – Restricted Areas 30 to 34

- NEW proposed restricted areas to bottom towed gear
- NEW proposed seasonal corridor (open to the fishery October - April)
- Restricted areas already in place
- The Wash and North Norfolk Coast Coast SAC boundary

Date: 10/12/2021
 Drawn by: SC
 Projection: Lat Long WSG84
 EMS boundary: JNCC download -
 UK_SACs_withMarineComponents_2103821

Chart_3_Areas_30_34_Formal_consultation.WOR



Chart 4: Cromer Shoal Chalk Beds MCZ - Restricted Areas 35,59 and 60 and the Artisanal Shrimp Management Area

— Cromer Shoal Chalk Beds MCZ boundary Restricted area to bottom towed gear
 Artisanal shrimp management area

NOT TO BE USED FOR NAVIGATION - FOR ILLUSTRATIVE PURPOSES ONLY

(c) British Crown and Oceanwise 2021. All rights reserved. Licence No.EK001-20180110. This product has been derived in part from material obtained from the Hydrographic Office with the permission of the UK Hydrographic office, Her Majesty's Stationery office and other relevant authorities.

Date: 01/10/2021
 Drawn by: TB
 Projection: Lat Long WGS1984
 EMS_boundary:
 JNCC_download_SAC's
 withmarinecomponents_21038



Chart 5: Haisborough, Hammond & Winterton SAC – Restricted Areas 36 to 38

- Restricted area to bottom-towed gear
- Eastern IFCA district boundary
- Haisborough, Hammond and Winterton SAC boundary

Not to be used for Navigation – for illustrative purposes only

Contains public sector information licensed under the Open Government Licence v1.0 (c) British Crown and OceanWise 2019. All rights reserved. Licence No.BK001-20190310. This product has been derived in part from material obtained from the UK Hydrographic Office with the permission of the UK Hydrographic Office, Her Majesty's Stationery Office and other relevant authorities.

Date:20/06/2019
 Drawn by:SC
 Projection: Lat Long WSG84
 EMS boundary:JNCC download -
 UK_SACs_withMarineComponents_2103821

2019_06_HHW_Byelaw_Chart_S.WOR

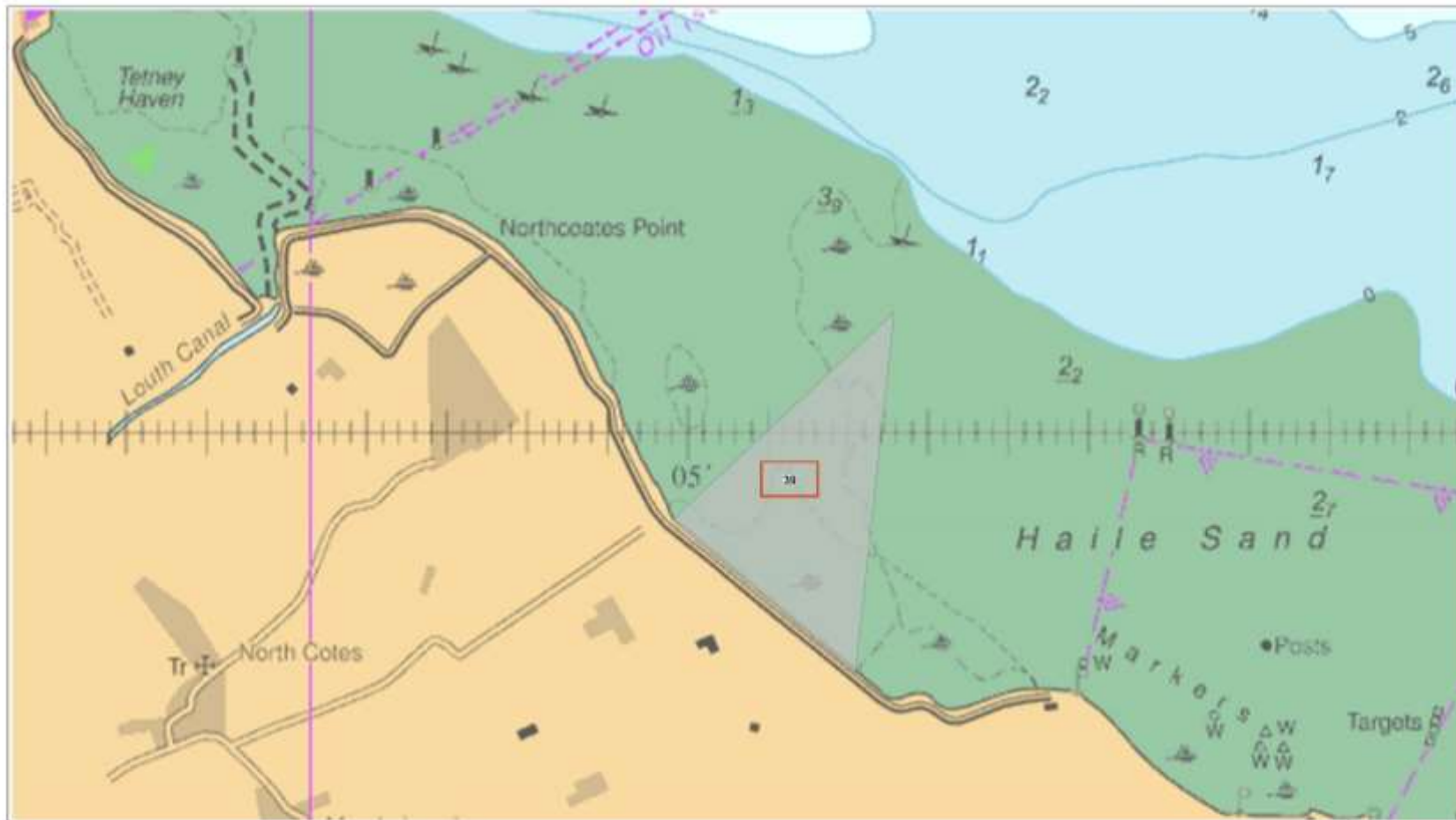


Chart 6: The Humber Estuary SAC – Restricted Area 39

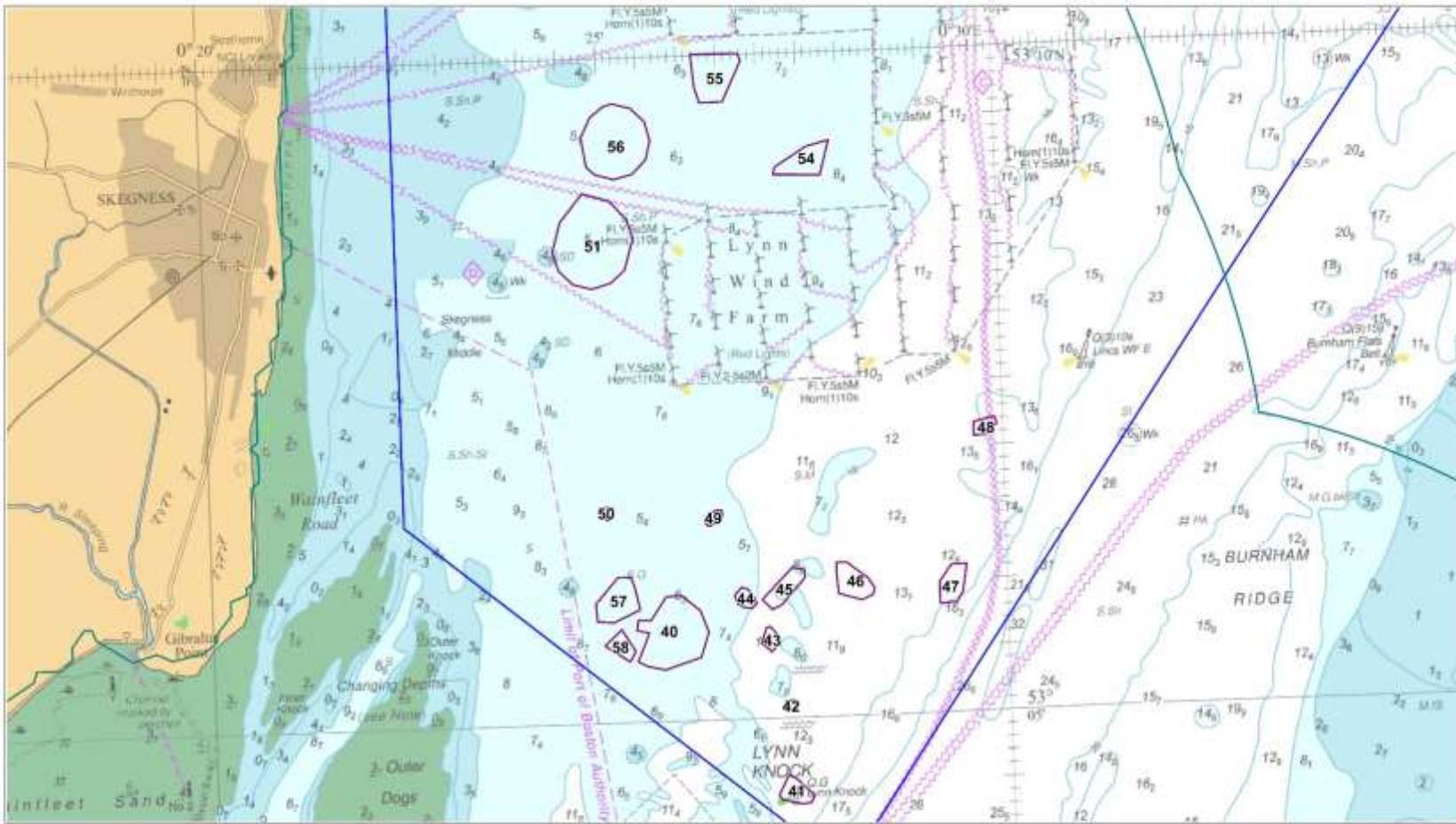
- NEW proposed restricted area to bottom towed gear, hand working and crab liling
- Restricted area already in place
- The Humber Estuary SAC boundary


Not to be used for Navigation – for illustrative purposes only

Contains public sector information licensed under the Open Government Licence v1.0 (c) British Crown and OceanWise 2021. All rights reserved. Licence No.00001-20100110. This product has been derived in part from material obtained from the UK Hydrographic Office with the permission of the UK Hydrographic Office, Her Majesty's Stationery Office and other relevant authorities.

Date: 16/12/2021
 Drawn by: SC
 Projection: Lat Long WSG84
 EMS boundary: JNCC download -
 UK_SACs_withMarineComponents_2103821

Chart_6_Area_39_Final_consultation.WOR



 <p>Eastern IFCA Inshore Fisheries and Conservation Authority</p>	<p>Chart 7: Inner Dowsing, Race Bank and North Ridge SAC - Restricted Areas 40 - 51 and 54 - 58</p> <p> Restricted area to bottom-towed gear EIFCA boundary IDRBNR SAC boundary </p> <p style="text-align: center;">Not to be used for Navigation – for illustrative purposes only</p> <p style="font-size: small;">Contains public sector information licensed under the Open Government Licence v1.0 (c) British Crown and OceanWise 2021. All rights reserved. Licence No.26001-20200110. This product has been derived in part from material obtained from the UK Hydrographic Office with the permission of the UK Hydrographic Office, Her Majesty's Stationery Office and other relevant authorities.</p>	<p>Date:04/10/2021 Drawn by:SC Projection: Lat Long WSG84 EMS boundary:JNCC download - UK_SACs_withMarineComponents_2103821</p> <p style="font-size: x-small;">2021_10_IDRBNR_all_closures_layout.WOR</p>
--	--	---