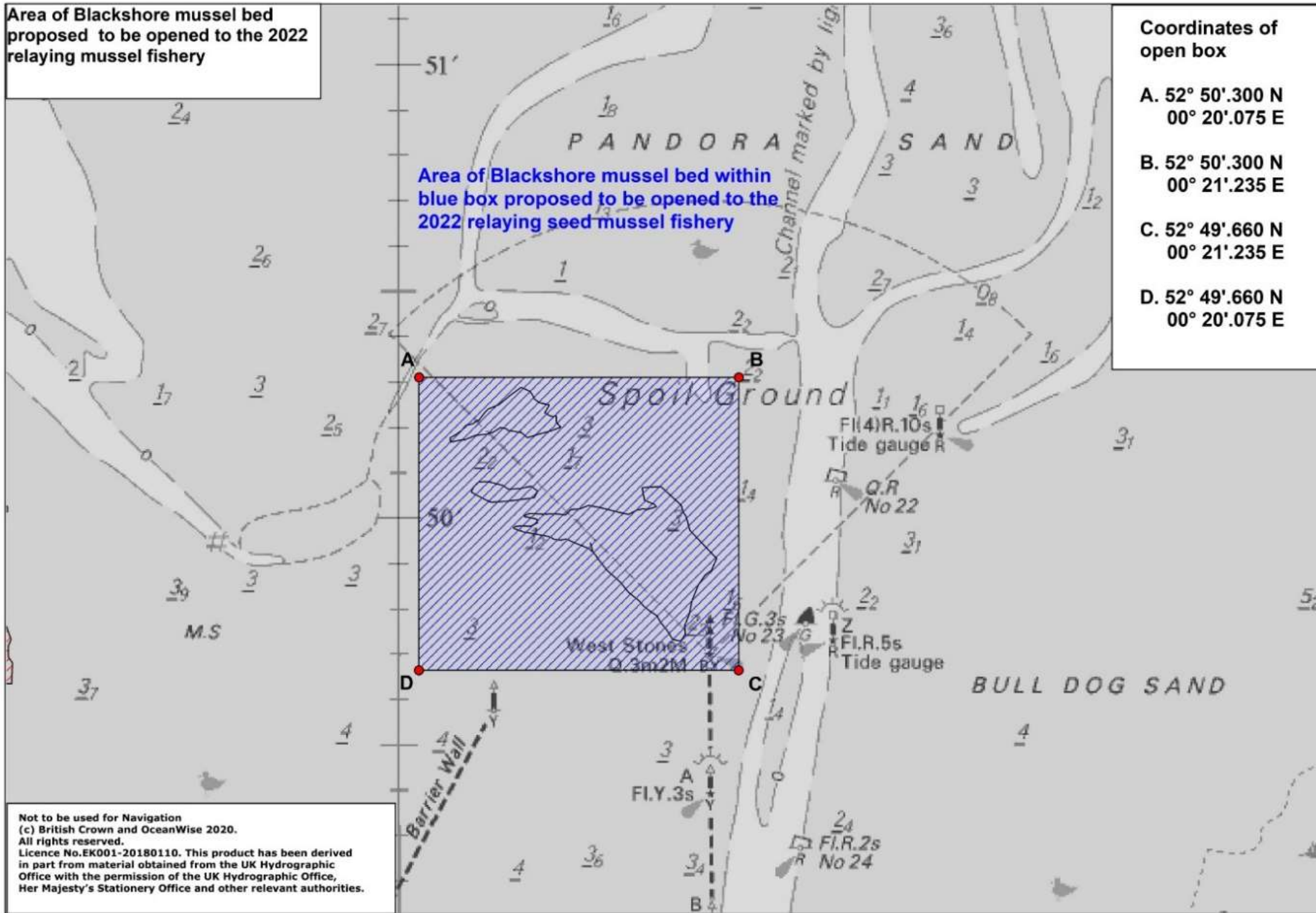


Area of Blackshore mussel bed proposed to be opened to the 2022 relaying mussel fishery

Area of Blackshore mussel bed within blue box proposed to be opened to the 2022 relaying seed mussel fishery

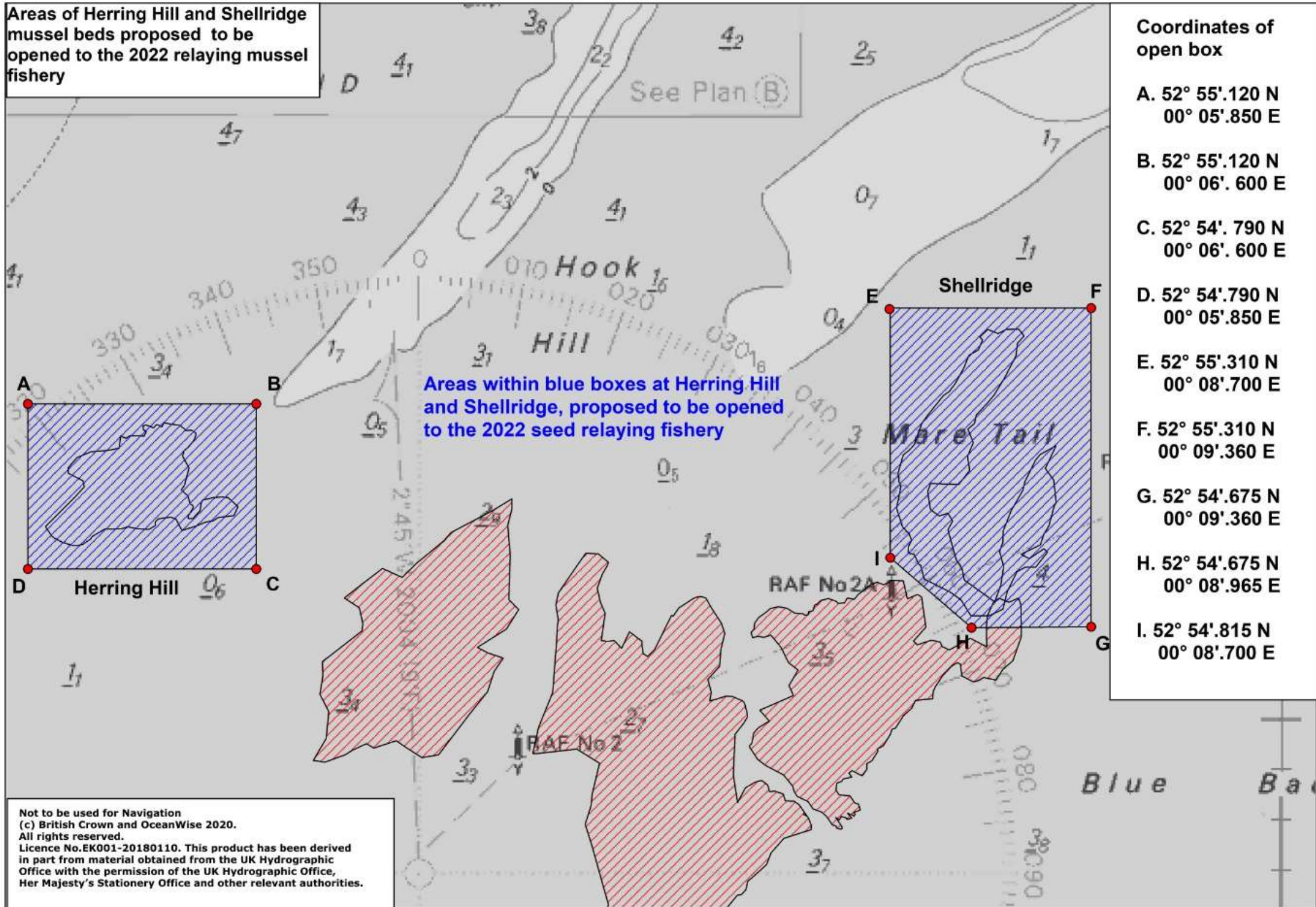
Coordinates of open box

- A. 52° 50'.300 N
00° 20'.075 E
- B. 52° 50'.300 N
00° 21'.235 E
- C. 52° 49'.660 N
00° 21'.235 E
- D. 52° 49'.660 N
00° 20'.075 E



Not to be used for Navigation
 (c) British Crown and OceanWise 2020.
 All rights reserved.
 Licence No.EK001-20180110. This product has been derived
 in part from material obtained from the UK Hydrographic
 Office with the permission of the UK Hydrographic Office,
 Her Majesty's Stationery Office and other relevant authorities.

Areas of Herring Hill and Shellridge mussel beds proposed to be opened to the 2022 relaying mussel fishery



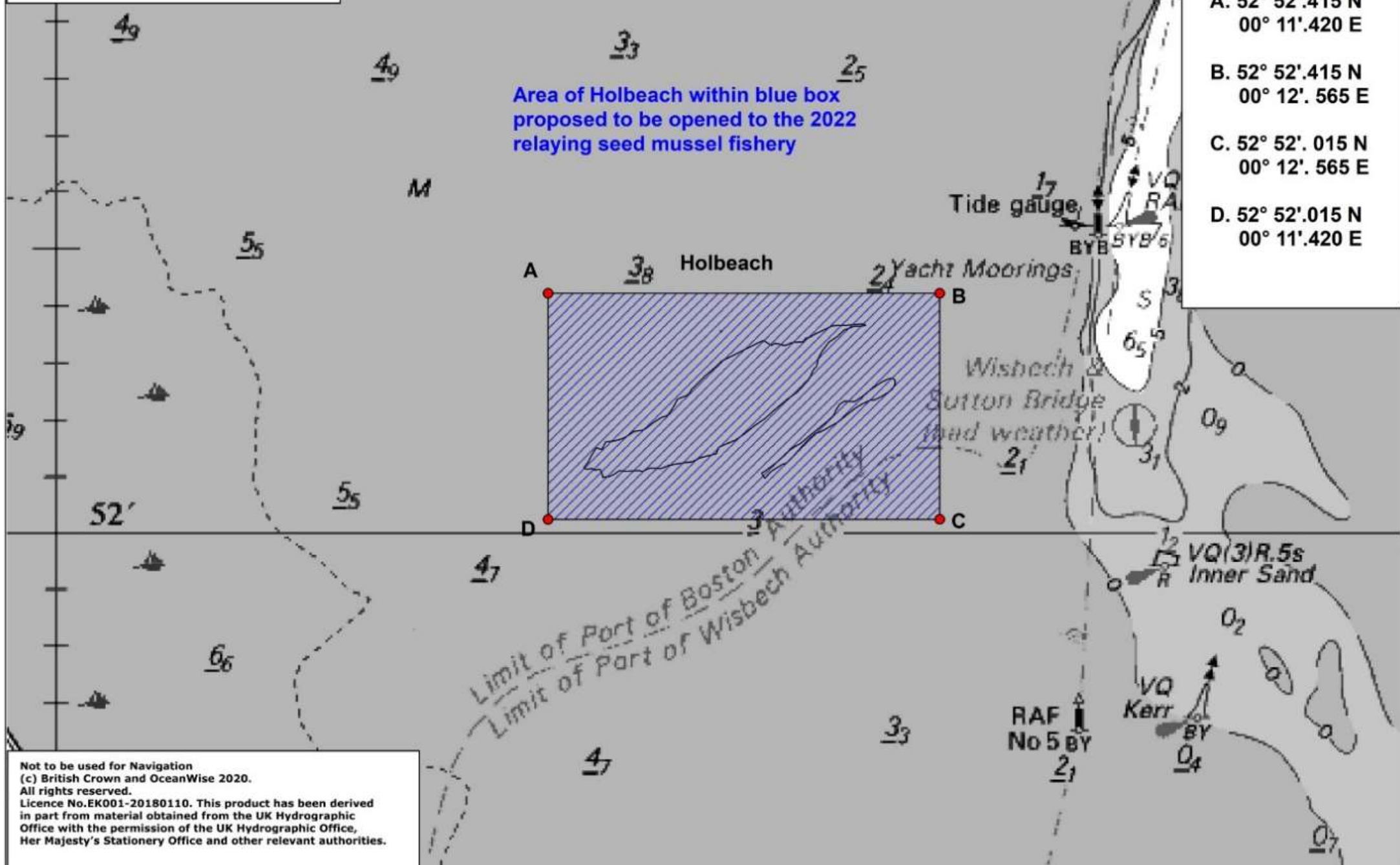
Areas within blue boxes at Herring Hill and Shellridge, proposed to be opened to the 2022 seed relaying fishery

Coordinates of open box

A.	52° 55'.120 N	00° 05'.850 E
B.	52° 55'.120 N	00° 06'. 600 E
C.	52° 54'. 790 N	00° 06'. 600 E
D.	52° 54'.790 N	00° 05'.850 E
E.	52° 55'.310 N	00° 08'.700 E
F.	52° 55'.310 N	00° 09'.360 E
G.	52° 54'.675 N	00° 09'.360 E
H.	52° 54'.675 N	00° 08'.965 E
I.	52° 54'.815 N	00° 08'.700 E

Not to be used for Navigation
 (c) British Crown and OceanWise 2020.
 All rights reserved.
 Licence No.EK001-20180110. This product has been derived in part from material obtained from the UK Hydrographic Office with the permission of the UK Hydrographic Office, Her Majesty's Stationery Office and other relevant authorities.

Area of Holbeach mussel bed proposed to be opened to the 2022 relaying mussel fishery

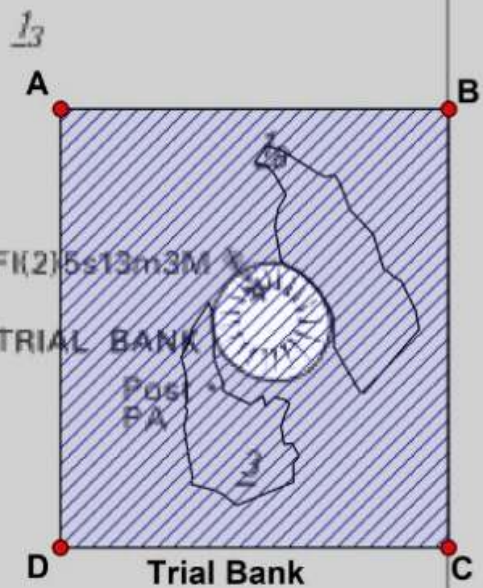


Coordinates of open box

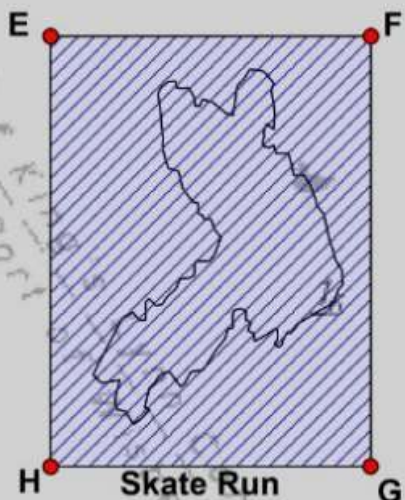
- A. 52° 52'.415 N
00° 11'.420 E
- B. 52° 52'.415 N
00° 12'. 565 E
- C. 52° 52'. 015 N
00° 12'. 565 E
- D. 52° 52'.015 N
00° 11'.420 E

Not to be used for Navigation
 (c) British Crown and OceanWise 2020.
 All rights reserved.
 Licence No.EK001-20180110. This product has been derived in part from material obtained from the UK Hydrographic Office with the permission of the UK Hydrographic Office, Her Majesty's Stationery Office and other relevant authorities.

Areas of Trial Bank and Skate Run mussel beds proposed to be opened to the 2022 relaying mussel fishery



Areas of Trial Bank and Skate Run mussel beds within blue boxes, proposed to be opened to 2022 relaying seed fishery



- Coordinates of open box
- A. 52° 50'.800 N
00° 14'.150 E
 - B. 52° 50'.800 N
00° 15'.000 E
 - C. 52° 50'.230 N
00° 15'.000 E
 - D. 52° 50'.230 N
00° 14'.150 E
 - E. 52° 50'.390 N
00° 16'.525 E
 - F. 52° 50'.390 N
00° 17'.225 E
 - G. 52° 49'.820 N
00° 17'.225 E
 - H. 52° 49'.820 N
00° 16'.525 E

Not to be used for Navigation
 (c) British Crown and OceanWise 2020.
 All rights reserved.
 Licence No.EK001-20180110. This product has been derived in part from material obtained from the UK Hydrographic Office with the permission of the UK Hydrographic Office, Her Majesty's Stationery Office and other relevant authorities.

