

NOTICE TO MARINERS

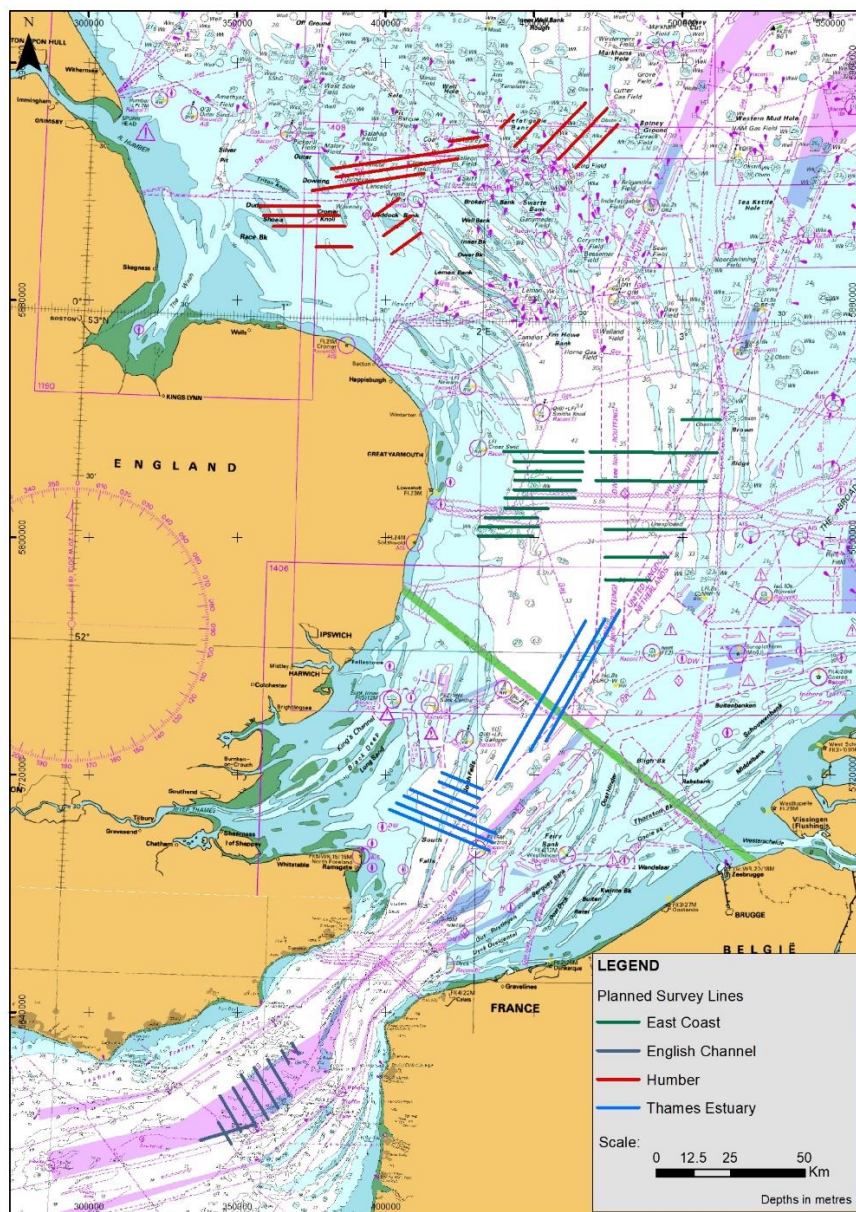
Bathymetric & Geophysical Survey

Date of Issue: 22st February 2022 (Rev. 4)

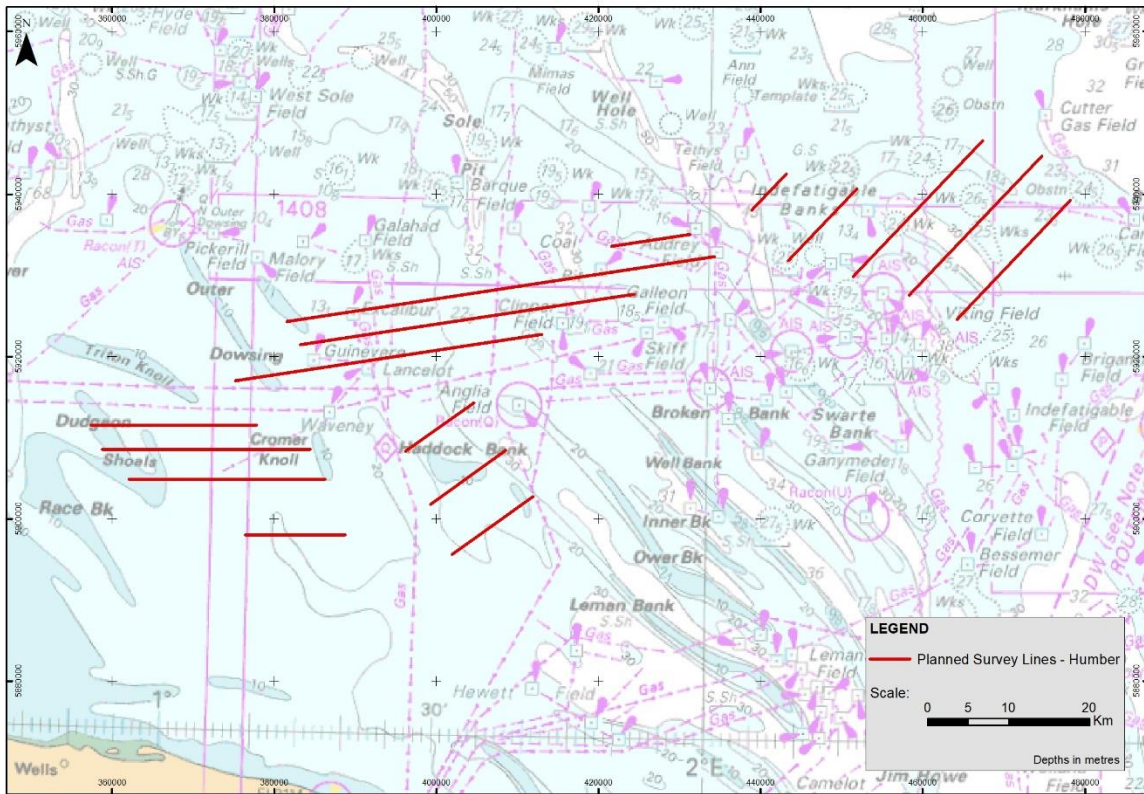
Mariners are advised that EGS International Ltd (EGSi) will be undertaking, on behalf of The Crown Estate, bathymetric and geophysical survey operations in four distinct regions along off the Southern the East coast of England (Humber, East Coast, Thames Estuary and English Channel).

Marine operations will be running from around the **25th of February 2022** with expected completion by **mid/late-March 2022** (weather dependant).

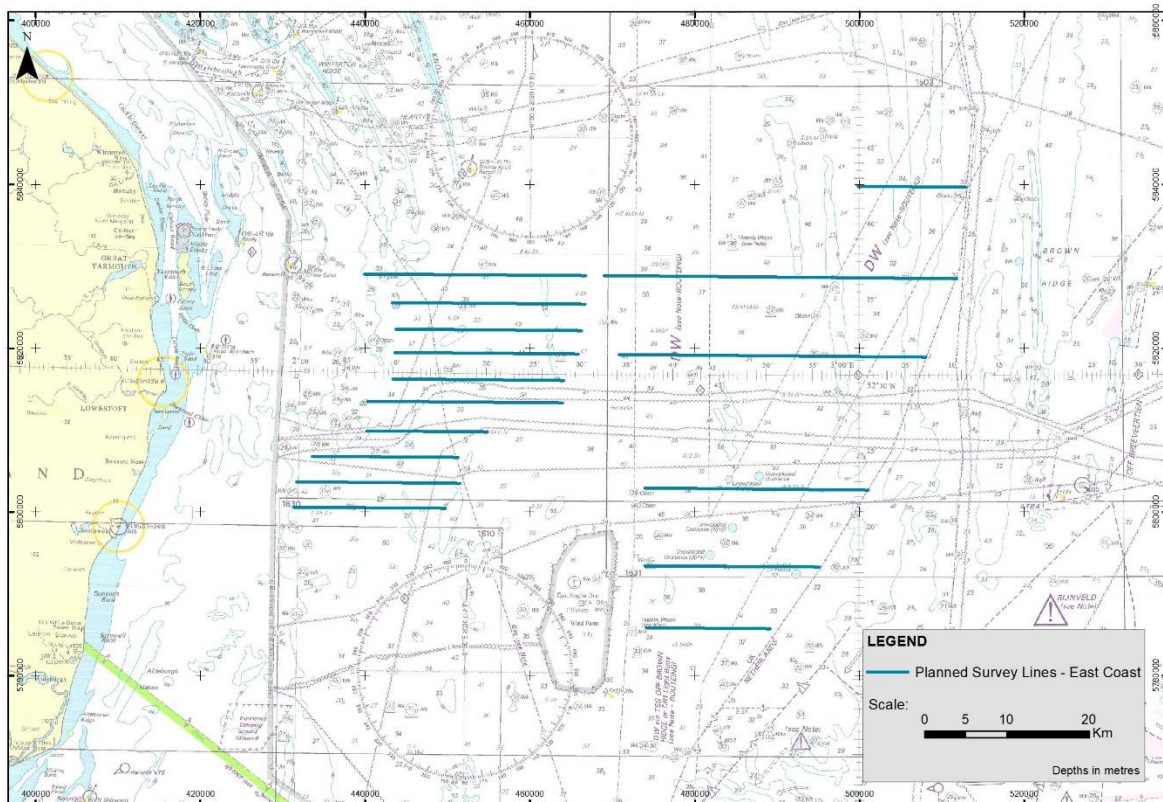
The survey works will be carried out along pre-selected lines shown and within the area in the map and detailed in the tables below.



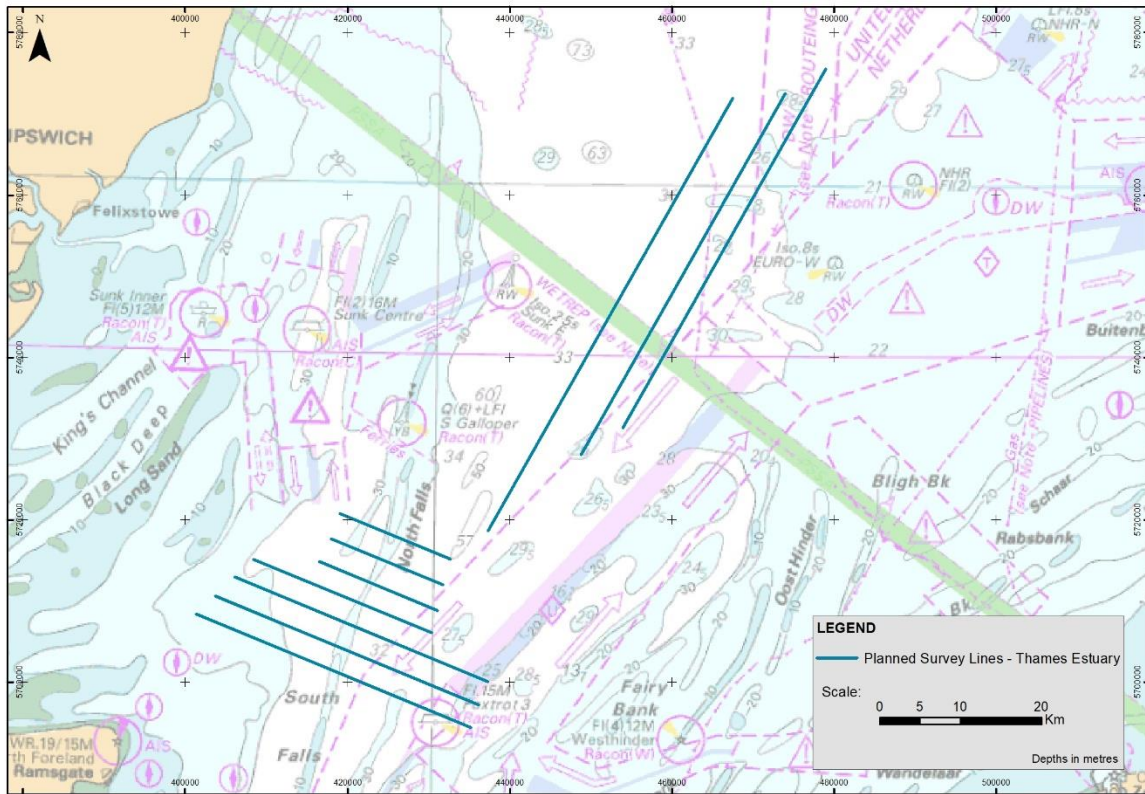
Survey Overview



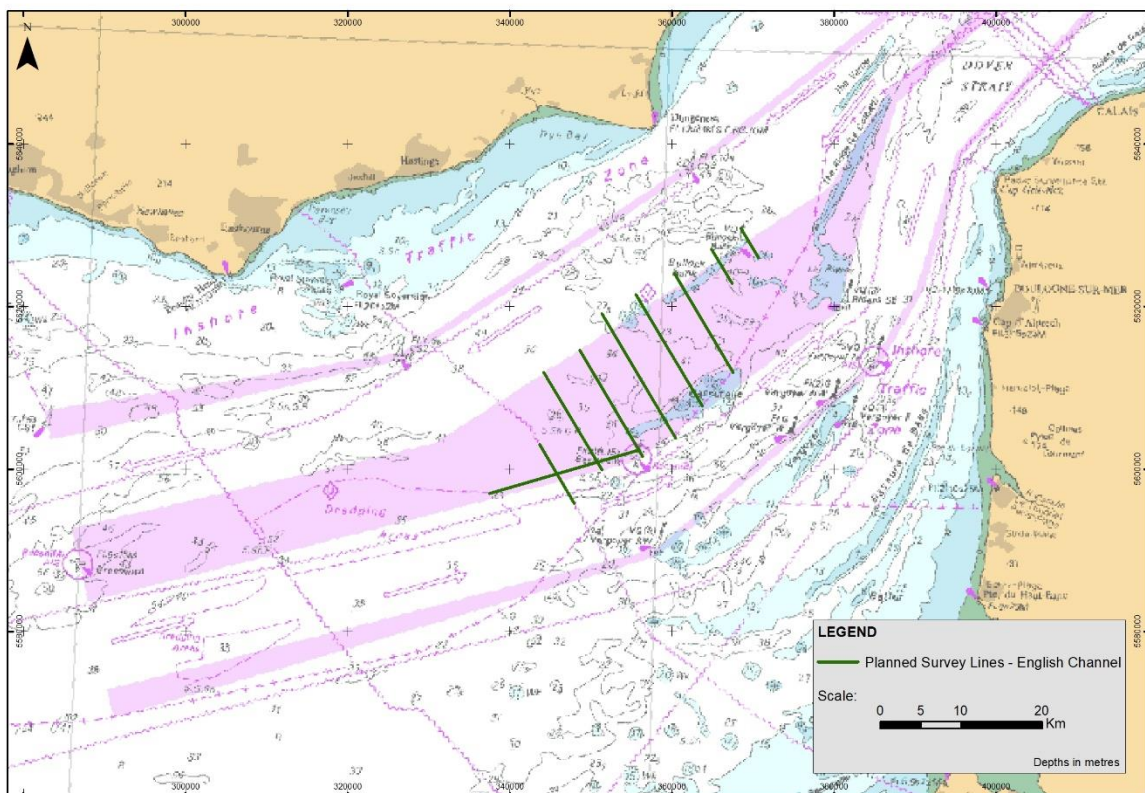
Humber Region Overview



East Coast Region Overview



Thames Estuary Region Overview



English Channel Region Overview

WGS 84			
SOL		EOL	
Latitude	Longitude	Latitude	Longitude
53° 13.21790' N	1° 19.95358' E	53° 13.05459' N	1° 8.894747' E
53° 16.87828' N	1° 17.53611' E	53° 16.53440' N	0° 55.82931' E
53° 18.83307' N	1° 15.84232' E	53° 18.45922' N	0° 52.72526' E
53° 20.36160' N	1° 9.796927' E	53° 20.05438' N	0° 51.38295' E
53° 23.25423' N	1° 7.355054' E	53° 26.79781' N	1° 41.29218' E
53° 25.76037' N	1° 14.47113' E	53° 29.58221' N	1° 51.55262' E
53° 32.15044' N	2° 0.444194' E	53° 27.27584' N	1° 12.87097' E
53° 33.61834' N	1° 57.63587' E	53° 32.74810' N	1° 48.92904' E
53° 22.18349' N	1° 33.86172' E	53° 18.83979' N	1° 26.41141' E
53° 16.02802' N	1° 40.64465' E	53° 12.07877' N	1° 31.84072' E
53° 15.36025' N	1° 29.29246' E	53° 19.05697' N	1° 37.53203' E
53° 37.69872' N	2° 8.290761' E	53° 35.27292' N	2° 4.489909' E
53° 31.94767' N	2° 8.675877' E	53° 36.76350' N	2° 16.23674' E
53° 30.94899' N	2° 15.90446' E	53° 40.05065' N	2° 30.27201' E
53° 39.03463' N	2° 36.89384' E	53° 29.73604' N	2° 22.17743' E
53° 28.16775	2° 27.52177	53° 36.11470	2° 40.11318
UTM 31N			
SOL		EOL	
Easting	Northing	Easting	Northing
388795.124	5898034.766	376481.056	5898034.813
386267.094	5904884.927	362128.257	5904885.019
384473.003	5908554.658	358784.714	5908554.756
377833.324	5911556.564	357382.924	5911556.643
375264.693	5916990.209	413004.100	5922720.080
383267.039	5921435.880	424444.978	5927687.814
434343.683	5932302.955	381565.442	5924289.779
431281.073	5935069.181	421641.456	5933605.624
404606.564	5914322.676	396209.035	5908296.313
411917.295	5902763.826	401980.041	5895632.502
399271.635	5901775.939	408565.227	5908445.349
443136.404	5942478.639	438888.237	5938032.954
443432.749	5931808.954	451877.543	5940646.389
451399.810	5929867.882	467397.071	5946608.936
474679.539	5944679.601	458313.076	5927552.180
464200.635	5924595.386	478201.213	5939246.920

Humber Region Planned Survey Lines

WGS 84			
SOL		EOL	
Latitude	Longitude	Latitude	Longitude

52° 21.13137' N	2° 15.60358' E	52° 21.09135' N	1° 59.38317' E
52° 22.78259' N	2° 17.08130' E	52° 22.74178' N	1° 59.67125' E
52° 24.48363' N	2° 16.89006' E	52° 24.44856' N	2° 1.274356' E
52° 26.18405' N	2° 20.00796' E	52° 26.16309' N	2° 7.064398' E
52° 28.12236' N	2° 7.124874' E	52° 28.14432' N	2° 28.07858' E
52° 29.60379' N	2° 9.818401' E	52° 29.61947' N	2° 28.12631' E
52° 31.36720' N	2° 9.981899' E	52° 31.38172' N	2° 29.67685' E
52° 32.90988' N	2° 10.08407' E	52° 32.92399' N	2° 30.02179' E
52° 34.64908' N	2° 9.656696' E	52° 34.66386' N	2° 30.39827' E
52° 36.50960' N	2° 6.660604' E	52° 36.53157' N	2° 30.40203' E
52° 36.54698' N	2° 32.37212' E	52° 36.40656' N	3° 10.36986' E
52° 31.35421' N	2° 34.08787' E	52° 31.23598' N	3° 7.026617' E
52° 22.55153' N	2° 36.90969' E	52° 22.47110' N	3° 0.813112' E
52° 17.38834' N	2° 55.56528' E	52° 17.44428' N	2° 36.95576' E
52° 13.32931' N	2° 50.33448' E	52° 13.36437' N	2° 37.13412' E
52° 42.40759' N	3° 11.33670' E	52° 42.47346' N	2° 59.73349' E

UTM 31N

SOL		EOL	
Easting	Northing	Easting	Northing
449732.717	5800416.784	431316.940	5800565.366
451440.644	5803461.294	431686.528	5803620.673
451255.011	5806617.196	433548.223	5806760.058
454819.366	5809735.956	440152.134	5809854.294
440264.974	5813485.964	463991.291	5813294.536
443346.656	5816196.315	464065.454	5816029.152
443569.439	5819463.601	465843.046	5819283.893
443717.964	5822322.476	466252.951	5822140.660
443272.432	5825552.636	466700.543	5825363.614
439930.872	5829042.705	466728.482	5828826.497
468952.339	5828840.351	511841.764	5828494.312
470831.276	5819200.486	508083.491	5818899.929
473935.605	5802861.734	501059.027	5802642.898
495094.427	5793221.799	473937.606	5793392.495
489130.706	5785706.001	474100.569	5785827.267
512903.987	5839623.758	499836.362	5839729.190

East Coast Region Planned Survey Lines

WGS 84			
SOL		EOL	
Latitude	Longitude	Latitude	Longitude
51° 23.88656' N	2° 3.976990' E	51° 31.11652' N	1° 34.58075' E
51° 25.39254' N	2° 4.806080' E	51° 32.33555' N	1° 36.58870' E
51° 26.95569' N	2° 5.725490' E	51° 33.61556' N	1° 38.67138' E
51° 30.13159' N	1° 59.67914' E	51° 34.82711' N	1° 40.56238' E
51° 34.74263' N	1° 47.63557' E	51° 31.63159' N	2° 0.272501' E

51° 36.28288' N	1° 48.86686' E	51° 33.33304' N	2° 0.849118' E
51° 37.96070' N	1° 49.73233' E	51° 35.05112' N	2° 1.552468' E
52° 7.844652' N	2° 41.47744' E	51° 43.92740' N	2° 19.92984' E
52° 6.176275' N	2° 37.07246' E	51° 42.10756' N	2° 15.45415' E
52° 5.860039' N	2° 31.41117' E	51° 36.98310' N	2° 5.608246' E
UTM 31 N			
SOL		EOL	
Easting	Northing	Easting	Northing
435172.267	5694447.361	401346.533	5708397.213
436168.695	5697226.814	403711.608	5710612.231
437270.009	5700111.152	406163.086	5712939.757
430347.544	5706089.632	408388.657	5715145.554
416555.046	5714847.595	431071.842	5708860.816
418023.462	5717679.489	431781.095	5712005.792
419072.335	5720773.597	432636.303	5715179.768
479002.389	5775570.280	454010.139	5731396.158
473960.114	5772501.121	448823.782	5728072.332
467492.859	5771953.079	437364.561	5718700.923

Thames Estuary Region Planned Survey Lines

WGS 84			
SOL		EOL	
Latitude	Longitude	Latitude	Longitude
50° 33.53484' N	0° 47.46715' E	50° 29.70792' N	0° 51.27213' E
50° 38.33714' N	0° 47.71359' E	50° 31.98629' N	0° 54.03160' E
50° 32.96010' N	0° 58.25100' E	50° 39.89329' N	0° 51.36392' E
50° 42.34400' N	0° 53.59664' E	50° 34.24156' N	1° 1.639500' E
50° 43.69172' N	0° 57.11298' E	50° 36.40728' N	1° 4.337353' E
50° 38.68369' N	1° 7.503171' E	50° 45.16557' N	1° 1.081712' E
50° 44.58876' N	1° 7.132424' E	50° 46.83883' N	1° 4.902112' E
50° 46.34511' N	1° 9.831463' E	50° 48.26195' N	1° 7.933064' E
50° 30.18227' N	0° 42.45186' E	50° 33.33829' N	0° 57.83132' E
UTM 31N			
SOL		EOL	
Easting	Northing	Easting	Northing
343662.460	5603031.816	347949.227	5595807.836
344218.182	5611922.847	351330.763	5599936.859
356364.055	5601602.854	348603.692	5614680.471
351362.854	5619146.787	360428.351	5603869.781
355570.267	5621528.299	363716.924	5607799.703
367557.372	5611922.763	360311.942	5624132.626
367398.636	5622877.788	364884.080	5627115.272
370653.431	5626053.145	368512.153	5629661.588
337549.797	5596998.637	355887.747	5602317.313

English Channel Region Planned Survey Lines

Operations will be carried out from the vessel **EGS Ventus** (IMO 7506237; Call Sign V7I19).



EGS Ventus

Please, be advised that during survey operations the vessels will be towing survey equipment and be restricted in its ability to manoeuvre, and other vessels are requested to maintain an appropriate and safe distance of **at least 200m**.

During operations the vessels will display the appropriate day shapes/signals and lights as required by the IRPCS. A continuous listening watch will be maintained on VHF Channel 16 and DSC.

In consideration of the potentially high density of fishing activity in the Humber Region, a scouting vessel (details TBC) will be used to mitigate any risk to fishing gear which may be deployed in the area targeted by the survey.

Any enquiries regarding this notice should be direct to:

EGSi Project Manager

Walter Colautti

Email: wcolautti@egssurvey.co.uk

Office: +44 (0)1420 489329

Mobile: +44 (0)7876 707454

Any enquires regarding fishing activity should be directed to:

Project Fishery Liaison Officer

Merlin Jackson

Email: merlinjackson@btinternet.com

Mobile: +44 (0)7989520484

Please note that the Distribution List for this Notice to Mariners is as follows:

UKHO (HDC)	hdcfiles@ukho.gov.uk
UKHO (NM's)	sdr@ukho.gov.uk
The Crown Estate	consents@thecrownestate.co.uk
MCA (Navigation Safety)	navigationsafety@mcga.gov.uk
HM Coastguard Dover	dover.coastguard@mcga.gov.uk
Kingfisher Bulletin	kingfisher@seafish.co.uk
NFFO	nffo@nffo.org.uk
IFCA, Southern Region	enquiries@southern-ifca.gov.uk
IFCA, Sussex Region	admin@sussex-ifca.gov.uk
IFCA, Kent & Essex Region	info@kentandessex-ifca.gov.uk
IFCA, Eastern Region	mail@eastern-ifca.gov.uk
IFCA, North-Eastern Region	ne-ifca@eastriding.gov.uk