

NOTICE TO MARINERS

Issue Date: 22nd April 2022

VIKING LINK Project

Survey and Blind joints removal works

Mariners are advised about cable jointing activities planned for the Viking Link project which is an HVDC electricity transmission interconnector between Denmark and England, a joint venture between National Grid and Energinet.

The works covered within this Notice to Mariners consist of the survey investigation on the cables and removal of no. 2 blind joints at the end of offshore C2 cable ends – Location: Easting, Northing in ETRS 89 31N: 430739.08E, 5994239.65N (see tables below and **Figure 1** as reference) and the exclusion zone area.

ETRS89		ETRS89 UTM31N	
Longitude	Latitude	Easting (m)	Northing (m)
1°56,4610775'E	54°5,5002902'N	430739	5994239

TDP KP, km	TDP Easting, m	TDP Northing, m	TDP Latitude, deg min sec (ETRS89)	TDP Longitude, deg min sec (ETRS89)	TDP Latitude, deg dec min (DDM)	TDP Longitude, deg dec min (DDM)
461.542	430739.08	5994239.65	54;05;30.019N	001;56;27.722E	54°05.50` N	001°56.46` E

Exclusion Zone area

TDP KP, km	TDP Easting, m	TDP Northing, m	TDP Latitude, deg min sec (ETRS89)	TDP Longitude, deg min sec (ETRS89)	TDP Latitude, deg dec min (DDM)	TDP Longitude, deg dec min (DDM)
461.048	431214	5994375	54°5'35"N	1°56'54"E	54°5,5772979'N	1°56,8959398'E
465.048	427368	5993278	54°4'57"N	1°53'23"E	54°4,9541872'N	1°53,3844823'E

Works are currently planned to start on the **24th April 2022**, with an expected completion by second half of May 2022.

The survey and Blind Joints removal works are being carried out by **Prysmian PowerLink** using the following vessels:

- CLV "**Leonardo da Vinci**";

Vessel and contact details are given in **Table 1** below. Vessel transit route and passage plan is shown in **Figure 2**.

Vessels are requested to pass at a safe speed and distance and fishing vessels are advised to remain a safe distance, approximately 550m (0.3 nautical miles) from the areas identified. During these works the vessel will have restricted manoeuvrability as it completes its work scope.

VHF CH 16 will be monitored at all times and will be used to contact the coastguard in the event of an emergency.

Vessel Name	Vessel Photograph	Vessel Details
Cable Lay Vessel – “Leonardo da Vinci”	 <p data-bbox="448 1211 603 1252">© Vidar Sonderland MarineTraffic.com</p>	MMSI: 247415300 Call Sign: IJVJ2

Table 1 – Work vessel details

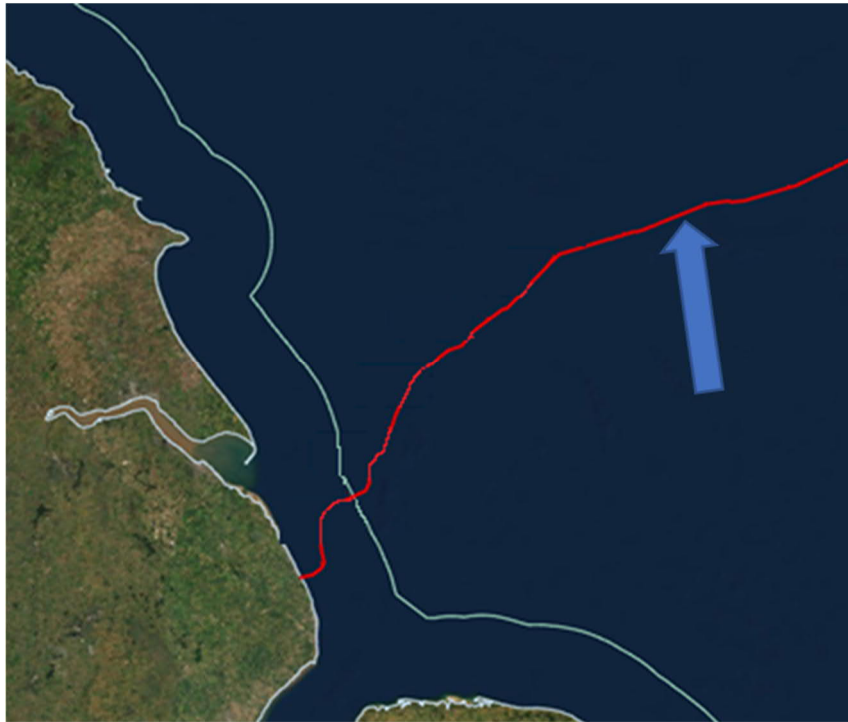
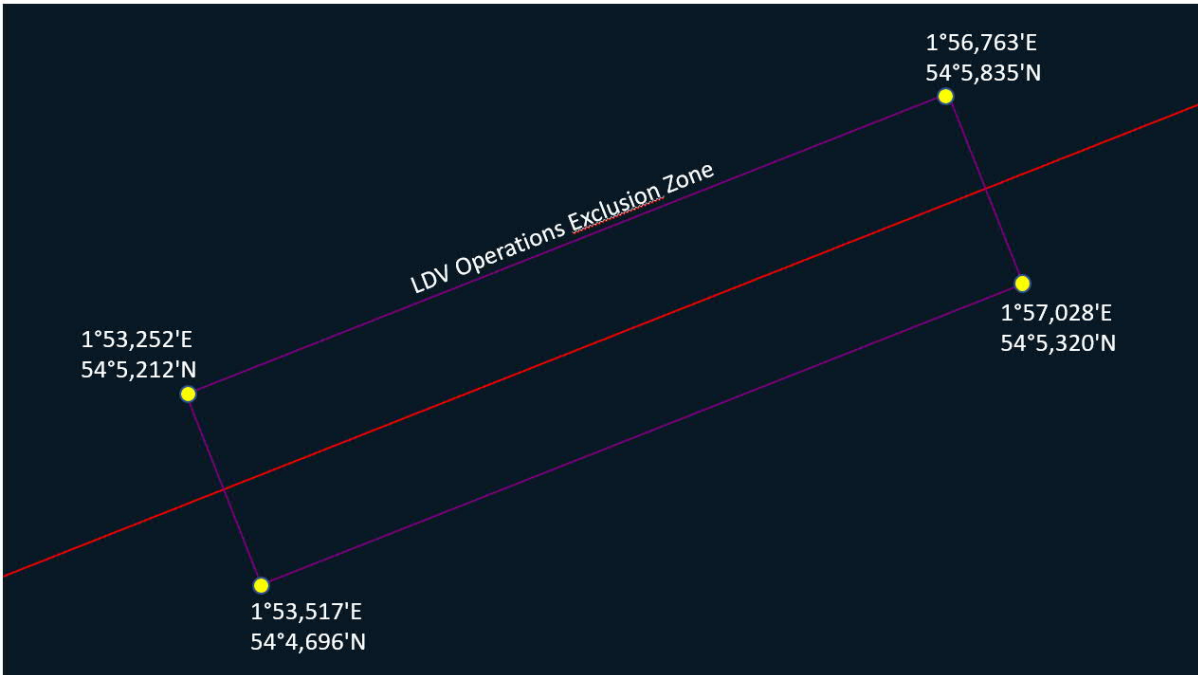


Figure 1 – Overview of the Viking Link Interconnector area of work

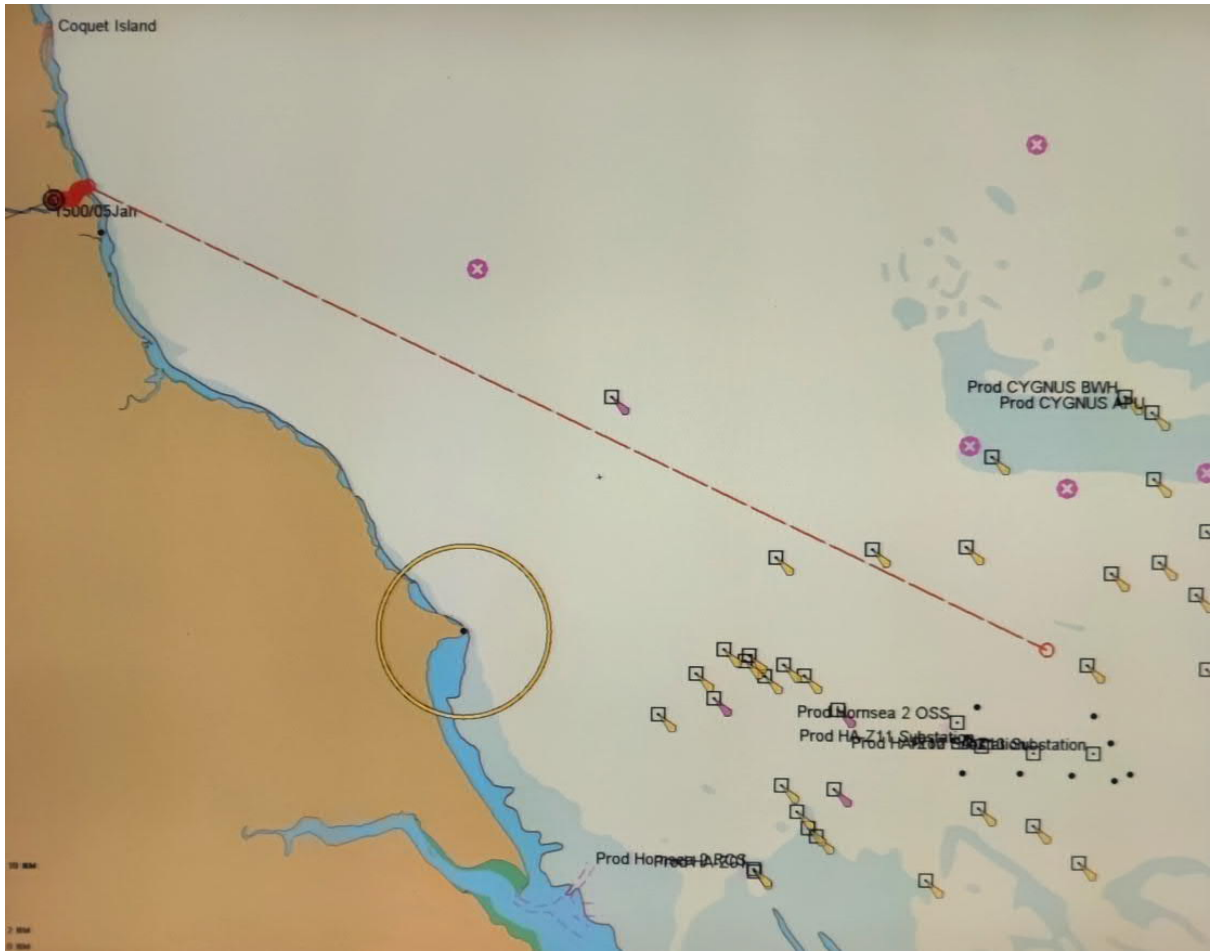


Figure 2 – “Leonardo da Vinci” transit route and passage plan

Contact Details:

Further enquiries should be addressed to the following contacts:

FLO contact

Jonathan Keer

jonathan@brownmay.com

Mobile: +44 7850 604851

Freya Sandison

freya@brownmay.com

Mobile: +44 7857 500609

Prysmian Project Manager

Alessandro Jared Crivelli

alessandro.crivelli@prysmiangroup.com

Mobile: +39 3454 595615

Prysmian Project Manager

Matteo Borselli

matteo.borselli@prysmiangroup.com

Mobile: +39 338 65 41 587

Master of Cable Enterprise

Master

ldv.master@prysmiangroup.com

VSAT number +39 02 87361865