



# Notice to Mariners – Hornsea Project Two

## Notice of Array Cable Installation Activities – Vessel Details – 06/05/2022

### 1. SUMMARY OF OPERATIONS

<b>Activity update:</b>	Vessels mobilising to site
<b>General activity:</b>	Array Cable Installation – Hornsea Project Two Offshore Wind Farm
<b>Location:</b>	Array area (as shown in Figure 2)
<b>Updated vessels:</b>	Rollingstone (further details provided in Section 5)
<b>Proposed start date:</b>	On or around 12 May 2022
<b>Proposed end date:</b>	End of Q2 2022
<b>Notes:</b>	These works will be carried out alongside ongoing survey and construction activities for Hornsea Project Two.

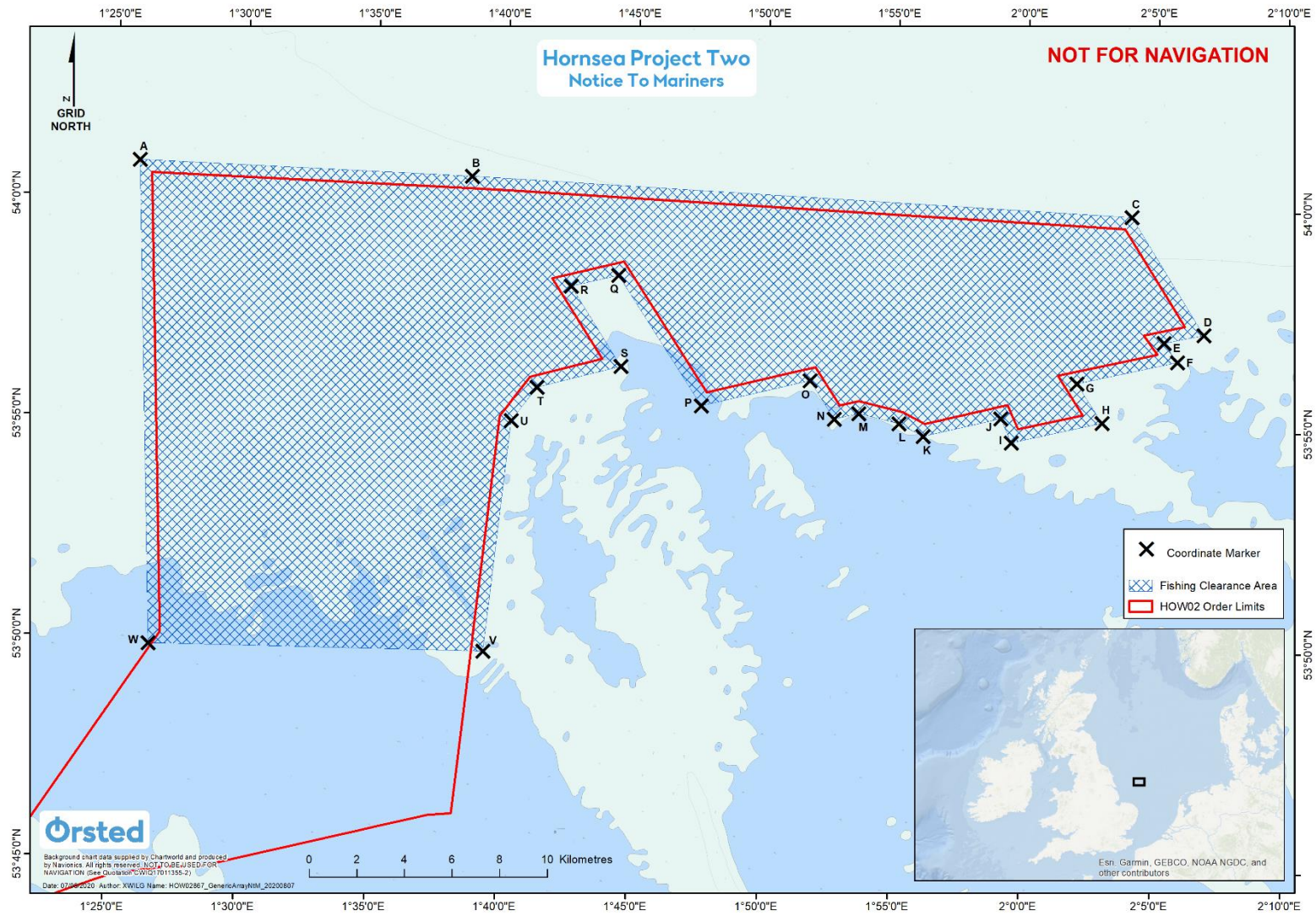
Mariners are advised that MaxSea and Olex plotter files of the proposed works area can be provided by the Project's Commercial Fisheries Advisors at Brown and May Marine Limited and the Project's onshore fisheries liaison. Contact details are provided in Section 4 of this Notice.

### 2. HAZARDS & SAFETY

Note that the vessels will have limited manoeuvrability and it is requested that all vessels operating near the vessels maintain a safe distance (at least 500m) and pass all vessels at minimum speed.

It is requested that anybody having knowledge of any potential objects submerged or moored on the seabed within the works area that could be damaged or form a hazard to the vessel and its equipment advises the Project's Fishing Industry Liaison of their position and nature. The Project has also requested the clearance of static fishing gear within the boundary shown in Figure 1 and described in Section 6 of this Notice. When works commence a listening watch will be maintained on VHF Channel 12 and 16 when within the appropriate port authority area and will actively transmit an AIS signal.

Figure 1. Proposed Construction and Survey Area



### 3. IMMEDIATE CONTACTS

The contents of this notice are based upon our current understanding of Project Two requirements. A further notice will be issued once activities are completed.

Enquiries regarding the contents of this Notice to Mariners or any other matters should be directed to:

<b>Project Manager (Ørsted)</b> (Office hours only)	Justin Hewlett (Cable Installation)	
	Tel: +44 75 3 8601825	E-mail: <a href="mailto:xjush@orsted.com">xjush@orsted.com</a>
<b>Project Manager (SOC)</b> (Office hours only)	Paulo Dutra	
	Tel: +49 491 91243-151	E-mail: <a href="mailto:paulo.dutra@subsea7.com">paulo.dutra@subsea7.com</a>
<b>Project Manager (Ørsted)</b> (Office hours only)	Richard Swann (Cable Termination)	
	Tel: +447495521241	E-mail: <a href="mailto:RISWA@orsted.com">RISWA@orsted.com</a>

### 4. FISHERIES LIAISON

Onshore Fisheries Liaison is provided by Nick Garside and Sophie Farenden who can be contacted on:

E-mail: <a href="mailto:nick.garside@live.co.uk">nick.garside@live.co.uk</a>	Mob: +44 (0) 7538 827013
Email: <a href="mailto:sophie.farenden@brownmay.com">sophie.farenden@brownmay.com</a>	Mob: +44 (0)7525 128344




An Offshore Fisheries Liaison Officer is on board the Emswind Guard Vessel contactable on VHF channel 16, if required.



In the event the Onshore Fisheries Liaison is not contactable please direct fisheries enquiries related to the works to the Ørsted Company Fisheries Liaison Officer:

Company Fisheries Liaison Officers – Courtney French	Tel: +44 (0)7796 447372	Email: <a href="mailto:CONFR@orsted.com">CONFR@orsted.com</a>
Lara Leonard	Tel: +44 (0)7747 245144	Email: <a href="mailto:LARLN@orsted.com">LARLN@orsted.com</a>

### 5. VESSELS

Operations will be conducted by the vessel list as provided below. Additional vessels may mobilise to site as required. Contact can be made directly with the vessels, where necessary, using the contact details listed below.

Vessel Name / Image	Vessel Type / Function	Vessel Tel.	Vessel E-mail	Call Sign	MMSI
<p data-bbox="297 312 483 336"><b>Seaway Aimery</b></p>  <p data-bbox="190 536 271 560"><small>© Wolfgang Kluge MarineTraffic.com</small></p>	<p data-bbox="645 312 763 336">Trenching</p>	<p data-bbox="891 312 1184 373">Direct: +44 2031 454122 Mobile: +49 1517 2140419</p>	<p data-bbox="1216 312 1632 336"><a href="mailto:SeawayAimery.Captain@subsea7.com">SeawayAimery.Captain@subsea7.com</a></p>	<p data-bbox="1693 312 1787 336">MDBO2</p>	<p data-bbox="1854 312 1980 336">232015468</p>
<p data-bbox="286 600 495 624"><b>Simar Esperanca</b></p>  <p data-bbox="190 882 271 906"><small>© Jack Dryden MarineTraffic.com</small></p>	<p data-bbox="645 600 860 730">Trenching, survey, mattress installation and CFE</p>	<p data-bbox="891 600 1173 624">Bridge: +44 1224 568827</p>	<p data-bbox="1216 600 1637 624"><a href="mailto:simaresperanca.captain@subsea7.com">simaresperanca.captain@subsea7.com</a></p>	<p data-bbox="1693 600 1778 624">C6AA4</p>	<p data-bbox="1854 600 1980 624">311073700</p>
<p data-bbox="282 919 499 943"><b>Normand Jarstein</b></p> 	<p data-bbox="645 919 831 1011">SOV supporting Array Cable Terminations</p>	<p data-bbox="891 919 1088 1038">Mob bridge: +47 96904804 VSAT bridge: +47 52858350</p>	<p data-bbox="1216 919 1520 979"><a href="mailto:bridge@jarstein.solstad.com">bridge@jarstein.solstad.com</a> <a href="mailto:master@jarstein.solstad.com">master@jarstein.solstad.com</a></p>	<p data-bbox="1693 919 1778 943">LAWK7</p>	<p data-bbox="1854 919 1980 943">257001590</p>

Vessel Name / Image	Vessel Type / Function	Vessel Tel.	Vessel E-mail	Call Sign	MMSI
<p data-bbox="293 276 495 300"><b>Grand Canyon 3</b></p> 	<p data-bbox="645 276 763 300">Trenching</p>	<p data-bbox="891 276 1128 336">+47 210 34521 SAT: 870 773204749</p>	<p data-bbox="1211 276 1525 300">master@grand-canyon3.no</p>	<p data-bbox="1697 276 1771 300">LACJ8</p>	<p data-bbox="1854 276 1980 300">257010590</p>
<p data-bbox="315 558 472 582"><b>Rollingstone</b></p> 	<p data-bbox="645 558 837 582">Rock installation</p>	<p data-bbox="891 558 1173 651">Mobile: +31 207 083 572 VSAT Bridge: +49 421 517 219 193 1</p>	<p data-bbox="1211 558 1653 659"><a href="mailto:captain.rollingstone@ships.deme-group.com">captain.rollingstone@ships.deme-group.com</a> <a href="mailto:Bridge.Rollingstone@deme-group.com">Bridge.Rollingstone@deme-group.com</a></p>	<p data-bbox="1697 558 1771 582">PHYR</p>	<p data-bbox="1854 558 1980 582">245746000</p>

## 6. COORDINATES

Coordinate Marker	Longitude (WGS84)	Latitude (WGS84)
A	1° 25' 51.462" E	54° 0' 48.311" N
B	1° 38' 38.382" E	54° 0' 34.663" N
C	2° 4' 1.621" E	53° 59' 52.681" N
D	2° 6' 50.713" E	53° 57' 13.578" N
E	2° 5' 19.157" E	53° 57' 1.913" N
F	2° 5' 50.608" E	53° 56' 36.173" N
G	2° 1' 59.723" E	53° 56' 5.632" N
H	2° 2' 58.547" E	53° 55' 12.083" N
I	1° 59' 29.954" E	53° 54' 43.789" N
J	1° 59' 5.229" E	53° 55' 16.550" N
K	1° 56' 7.241" E	53° 54' 51.044" N
L	1° 55' 10.769" E	53° 55' 8.053" N
M	1° 53' 38.216" E	53° 55' 20.976" N
N	1° 52' 41.920" E	53° 55' 12.914" N
O	1° 51' 45.091" E	53° 56' 4.428" N
P	1° 47' 35.573" E	53° 55' 28.005" N
Q	1° 44' 19.681" E	53° 58' 23.722" N
R	1° 42' 30.720" E	53° 58' 7.653" N
S	1° 44' 29.061" E	53° 56' 19.862" N
T	1° 41' 16.484" E	53° 55' 49.096" N
U	1° 40' 18.524" E	53° 55' 3.210" N
V	1° 39' 23.089" E	53° 49' 48.866" N
W	1° 26' 33.640" E	53° 49' 51.105" N