

NOTICE TO MARINERS

Please be advised that A-2-Sea Solutions will be carrying out marine survey operations along the existing Lincs Offshore Wind Farm export cable routes (LOWF) and Race Bank Offshore Wind Farm export cable routes (RBOWF). The Lincs marine survey will extend from KP 4 to KP 11, as shown below in figure 1. The Race Bank marine survey will extend from KP 3 to KP 9, as shown in the figure 2 below.

The corridor width for the Race Bank cable survey will nominally be 250m and for the Lincs cable survey corridor will be 50m. The survey vessel will be running along each corridor and in the general vicinity of each survey corridor.

The vessel will be working the length of each route where tidal restrictions allow, prioritising shallow-water work during high tides.

Survey work will be undertaken onboard the survey vessel 'MV Elysse'. The 'MV Elysse' (11m LOA) will be underway throughout operations sailing survey lines at 4-8 knots.

The vessel will exhibit the lights and shapes prescribed by the International Regulations for Preventing Collisions at Sea and will maintain a listening watch on VHF Channel 16.

Both survey operations will involve the use of hull mounted equipment and towed equipment below the water surface, up to 50m behind the vessel. A wide berth is requested at all times as the vessel will be restricted in her ability to manoeuvre.

Survey Duration

Survey operations are expected to commence from the 22nd of June with expected duration to be 1 week depending on weather conditions.

Survey Area

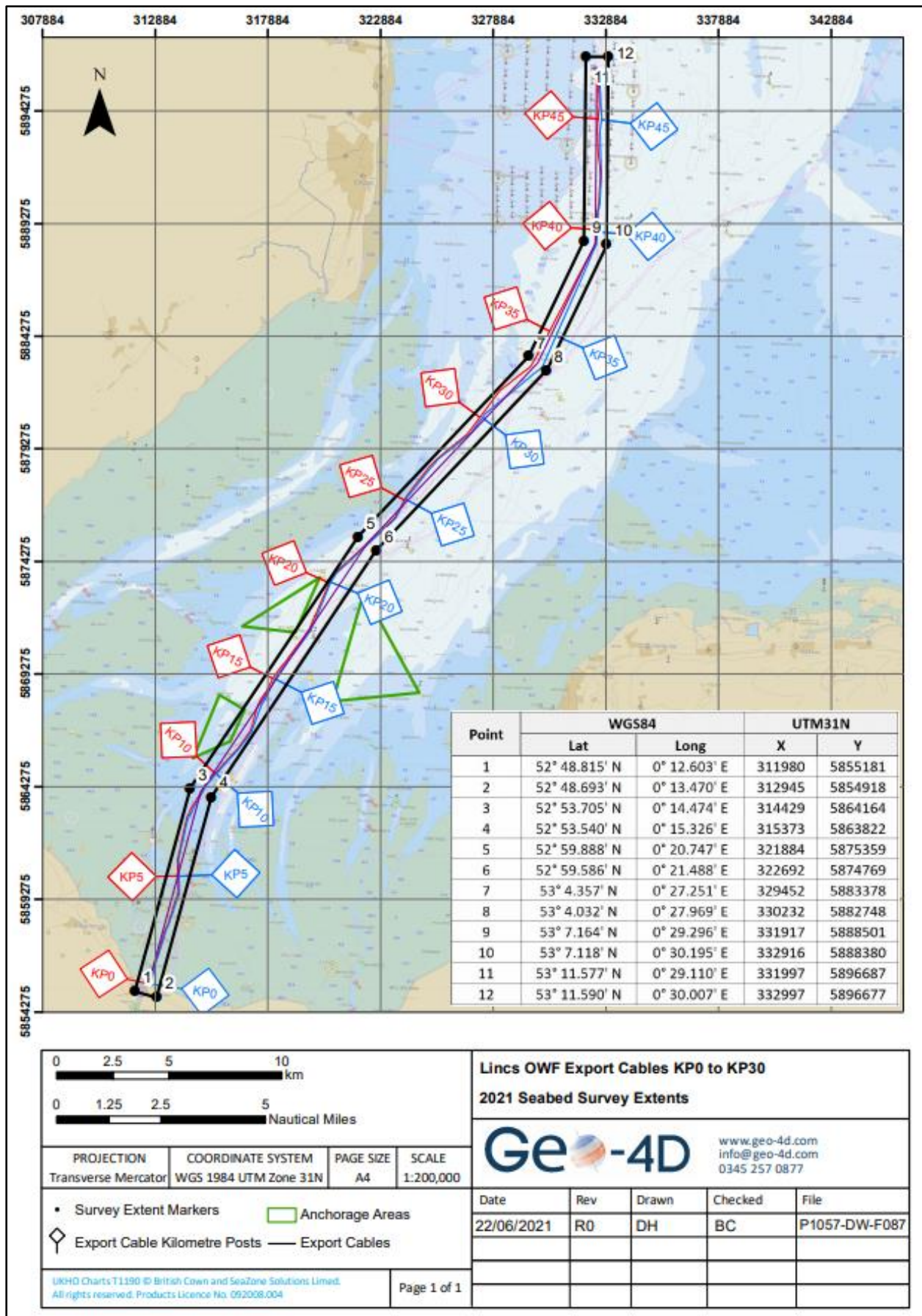


Figure 1: Lincs Offshore Wind Farm cable routes survey area overview

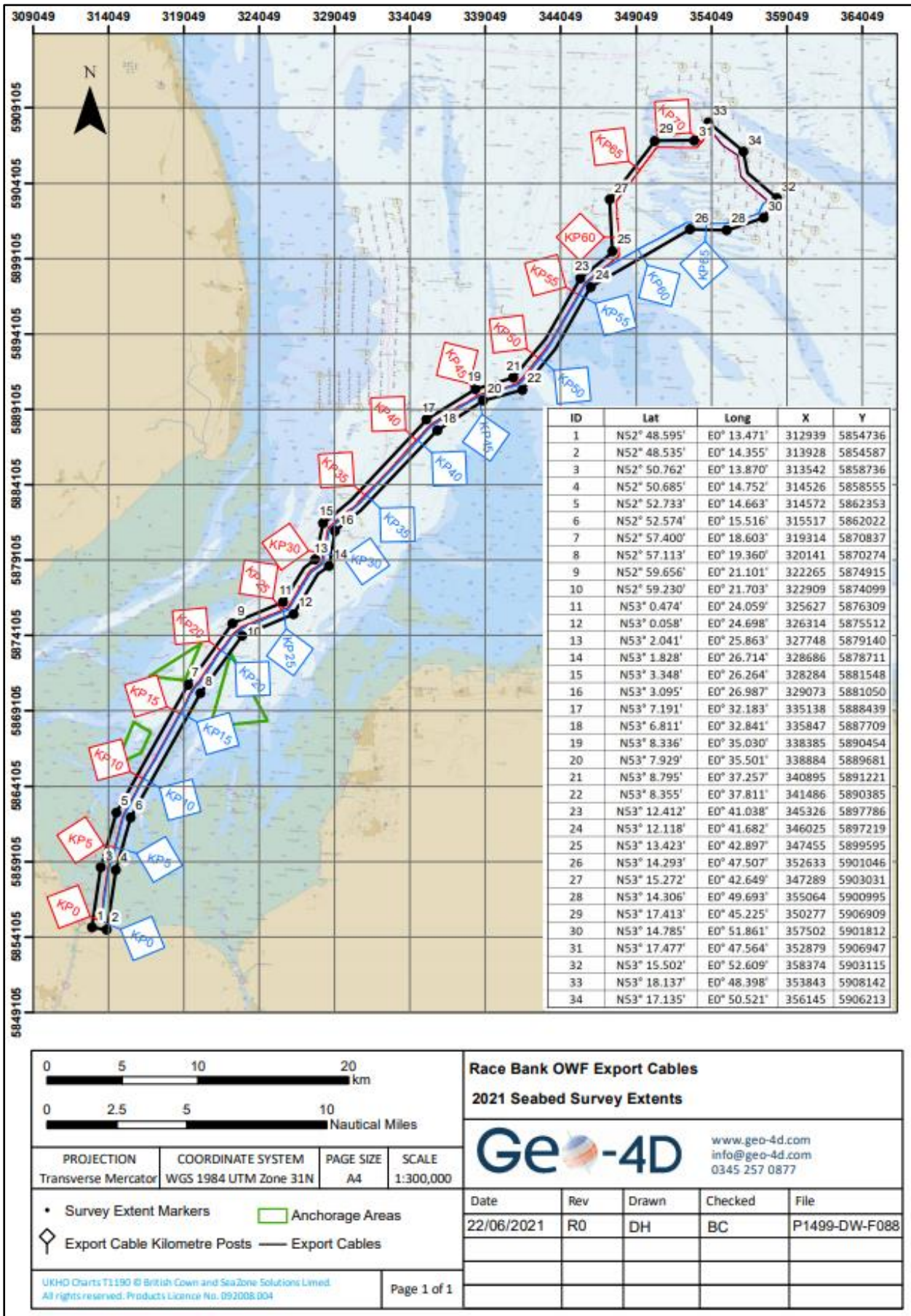


Figure 2: Race Bank Offshore Wind Farm cable routes survey area overview



Vessels

Name: MV Elysse
Length: 11.02m
Breadth: 4.20m
Draft: 0.95m
Call sign: MEHW5

Contact

For further information please contact Chris Briggs (Project Manager) 07932 912 553 or the A-2-Sea office 01794 830 909.