

**Notice to Mariners No4 / 2022**  
**17<sup>th</sup> of June 2022**



**Saltfleet to Gibraltar Point Beach Management Works**

**Shifting sinkerline from Wolla Bank to Trunchlane**

Van Oord and the Environment Agency would like to inform mariners that the Saltfleet to Gibraltar Point Beach Management Works are due to commence on the 2<sup>nd</sup> of June 2022 along the North East Lincolnshire Coastline. These works involve the dredging of sand from licenced dredging areas and pumping the sand via a sinkerline onto various beach locations at high tide intervals. The format of works is the same as in previous years.

On the 19 of June 2022 a sinker pipeline will be relocated from Wolla Bank ( Notice to Marine No 3 / 2022). To the below mentioned location. Please see area 6 & 7 chart below. The floating pipeline will remain connected to the offshore end of the sinker pipeline. 2 Cardinal marker buoys will be positioned to indicate the working area at Trunchlane & Ingodmells.

The schedule of works will be confirmed with further Notices to Mariners (NTM's) in due course.

As a result of Covid-19 restrictions the Fisheries Liaison Officer Dave Hardstaff will work from shore and be the main point of contact.

Email: [flo1@smchse.com](mailto:flo1@smchse.com)

Mobile: 07906 025240

<b>Lincshore Beach Management Works Outline Planning 2022</b>	
<b>Project Starting date</b>	02 <sup>nd</sup> of June 2022
<b>Total project duration</b>	Approximately 6 to 8 weeks depending on the weather. This includes mobilisation and demobilisation of project equipment.
<b>Vessels</b>	Dredger 'HAM 316' plus supporting Multicats and crew transfer vessel
<b>Start at Trunchlane</b>	19 <sup>th</sup> of June 2022
<b>Sinkerline will be installed.</b>	See below end of pipeline coordinates: <b>Trunchlane</b> ( a proximity ) 53° 12.634 N 000° 21.433 E
<b>Cardinal Marker buoys</b>	<b>1 x Eastern Cardinal South of the sinkerline at Chapels Point</b> ( Notice to Marine No 3 / 2022) 53° 13.70 N 000° 21.69 E  Will be relocated on 18 <sup>th</sup> June 2022 before the sinkerline movement to:  <b>1 x Eastern Cardinal South of the sinkerline at Ingodmells</b> 53° 10.86 N 000° 22.73 E

**Notice to Mariners No4 / 2022**  
**17<sup>th</sup> of June 2022**



**Saltfleet to Gibraltar Point Beach Management Works**

**Shifting sinkerline from Wolla Bank to Trunchlane**

	<p><b>1 x Eastern Cardinal North of the sinkerline at Wolla Bank</b> 53° 15.70 N 000° 20.91 E</p> <p>Will be relocated on 19<sup>th</sup> June 2022 after completion of the sinkerline movement to:</p> <p><b>1 x Eastern Cardinal North of the sinkerline at Trunchlane</b> 53° 13.70 N 000° 21.78 E</p>
--	---

**1.1 Current Vessel**

The vessel requests a **500m safety zone** and can be contacted on VHF 16 when on location.

**Notice to Mariners No4 / 2022**  
**17<sup>th</sup> of June 2022**



**Saltfleet to Gibraltar Point Beach Management Works**

**Shifting sinkerline from Wolla Bank to Trunchlane**

Vessel involved in the dredge operations for 2022

Name: Type	IMO / Call Sign	Image
Dredger – HAM 316	<b>9160449</b> <b>PHBD</b>	 A large blue and orange dredger vessel with a complex superstructure, viewed from a side-on perspective on the water.
Dredger – Vox Ariane	<b>9867085</b> <b>PDSM</b>	 A large blue and orange dredger vessel, viewed from a side-on perspective, with the name 'VOX ARIANE' visible on the hull.
Multicat - Panda	<b>9807798</b> <b>PCOA</b>	 A smaller, orange and black multicat vessel with two large yellow cranes, viewed from a side-on perspective.
Multicat – Severn Supporter	<b>9868534</b> <b>MHBD6</b>	 A blue and white multicat vessel with a yellow crane, viewed from a side-on perspective.
Crew transfer vessel - Spirit	<b>2DCF8</b>	 A small blue and white crew transfer vessel with 'ICENI MARINE SERVICES' written on the side, docked in front of a building.

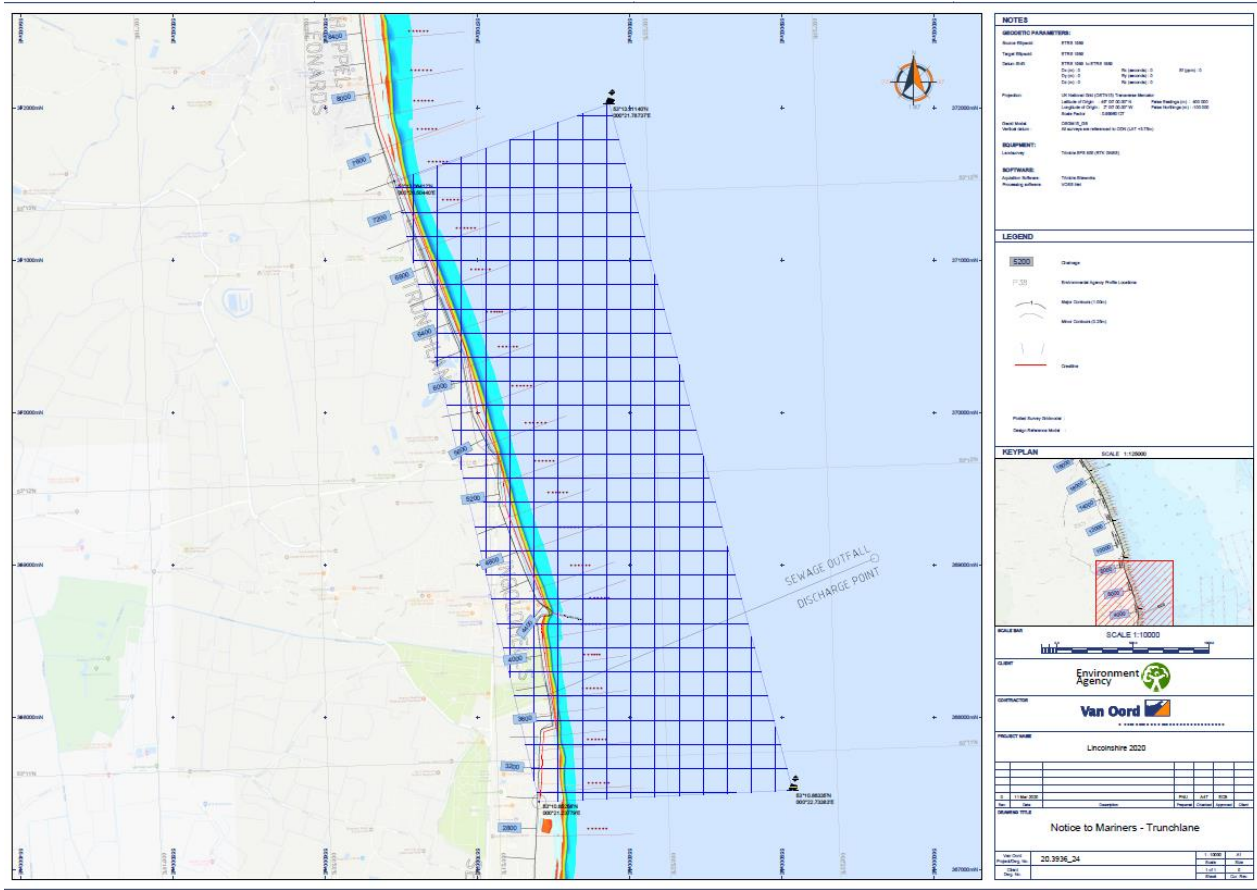
**Notice to Mariners No4 / 2022**  
**17<sup>th</sup> of June 2022**



**Saltfleet to Gibraltar Point Beach Management Works**

**Shifting sinkerline from Wolla Bank to Trunchlane**

**Area 6 Trunchlane & Area 7 Ingoldmells**



Point	Latitude	Longitude
01	53 13.06 N	000 20.50 E
02	53 13.31 N	000 21.78 E
03	53 10.86 N	000 22.73 E
04	53 10.85 N	000 21.23 E



**Notice to Mariners No4 / 2022  
17<sup>th</sup> of June 2022**

**Saltfleet to Gibraltar Point Beach Management Works**

**Shifting sinkerline from Wolla Bank to Trunchlane**

**Fisheries Liaison Contact**

Specialist Marine Consultants is the appointed Fisheries Liaison Coordinator and can be contacted as follows:

Ian Coates – Fisheries Liaison Co-ordinator  
Specialist Marine Consultants Ltd  
+44 (0) 07775597478  
Email: [ian@smchse.com](mailto:ian@smchse.com)

Any day to day information regarding movements and fisheries interactions please contact:  
Dave Hardstaff- Fishing Industry Representative - Based on land due to COVID 19 restrictions.  
Email: [fo1@smchse.com](mailto:fo1@smchse.com)  
Mobile: 07906 025240

**Further updates will be provided as required.**