

**Notice to Mariners – 16<sup>th</sup> June 2022**

Export Cable Corridor Geophysical Survey 2022

Outer Dowsing Offshore Wind (a joint venture between TotalEnergies and Corio Generation) shall be conducting a 3.5 month offshore geophysical survey between the 26<sup>th</sup> March and 15<sup>th</sup> July 2022 using vessel *Geo Ocean III* call sign: LXGP. The survey vessel shall be towing a cable up to approximately 75m behind the vessel (the end marked by a tail buoy) at depths of up to 3m below sea level. The survey vessel shall have limited maneuverability so please allow a safe distance.

Company:	Outer Dowsing Offshore Wind
Contractor :	GeoXYZ Limited
Survey vessel :	Geo Ocean III
Survey vessel call sign:	LXGP
Earliest start date:	26 <sup>th</sup> March 2022
Latest finish date:	15 <sup>th</sup> July 2022

The survey will be undertaken in the following area (refer to Figure 1).

<i>(Datum : WGS84)</i>		
Survey Area		
<b>Point</b>	<b>Latitude</b>	<b>Longitude</b>
A1	53° 31.69' N	01° 33.95' E
A2	53° 17.27' N	01° 03.78' E
A3	53° 06.76' N	00° 47.62' E
A4	53° 04.65' N	00° 37.60' E
A5	53° 05.76' N	00° 23.75' E
A6	53° 05.73' N	00° 20.80' E
A7	53° 17.63' N	00° 18.38' E
A8	53° 21.32' N	00° 26.44' E
A9	53° 21.70' N	00° 58.40' E
A10	53° 27.84' N	01° 10.62' E



Export Cable Corridor Nearshore Geophysical Survey 2022

As part of the above geophysical survey, Outer Dowsing Offshore Wind (a joint venture between TotalEnergies and Corio Generation) shall be conducting a 2.5 month nearshore geophysical survey between the 05<sup>th</sup> May and 15<sup>th</sup> July 2022 using vessel *Marshall Art* call sign: 2EMY5. The survey vessel shall be towing a cable up to approximately 75m behind the vessel at depths of up to 3m below sea level. The survey vessel shall have limited maneuverability so please allow a safe distance.

Company: Outer Dowsing Offshore Wind  
 Contractor : GeoXYZ Limited  
 Survey vessel : Marshall Art  
 Survey vessel call sign: 2EMY5  
 Earliest start date: 05<sup>th</sup> May 2022  
 Latest finish date: 15<sup>th</sup> July 2022

The survey will commence in the following area (refer to Figure 1) for several weeks. As the survey progresses updates will be given on the location.

<i>(Datum : WGS84)</i> Survey Area		
<b>Point</b>	<b>Latitude</b>	<b>Longitude</b>
B1	53° 21.70' N	00° 58.40' E
B2	53° 17.27' N	01° 03.78' E
B3	53° 06.76' N	00° 47.62' E
B4	53° 04.65' N	00° 37.60' E
B5	53° 05.76' N	00° 23.75' E
B6	53° 05.73' N	00° 20.80' E
B7	53° 17.63' N	00° 18.38' E
B8	53° 21.32' N	00° 26.44' E

It should be noted that the two survey vessels are accompanied by a fishing vessel: *Sorrento* providing visual reconnaissance for any sea surface obstacles. After 19<sup>th</sup> June, this vessel will change to the fishing vessel: *Independent*.

Company : Outer Dowsing Offshore Wind  
 Contractor : NFFO Services Limited  
 Support vessel : Sorrento  
 Support vessel call sign : 2XLE

Company : Outer Dowsing Offshore Wind  
 Contractor : NFFO Services Limited  
 Support vessel : Independent  
 Support vessel call sign : MGBH7

---

*Metocean Survey 2022 / 2023*

Outer Dowsing Offshore Wind (a joint venture between TotalEnergies and Corio Generation) are conducting a 12 month offshore Metocean survey between 17<sup>th</sup> April 2022 and 17<sup>th</sup> April 2023. A surface buoy and a seabed frame have been moored offshore. Please allow a safe distance from the buoy and seabed frame.

Company: Outer Dowsing Offshore Wind  
Contractor : Fugro GB Marine Limited  
Earliest start date: 17<sup>th</sup> April 2022  
Latest finish date: 17<sup>th</sup> April 2023

<i>(Datum : WGS84)</i>		
<b>Point</b>	<b>Latitude</b>	<b>Longitude</b>
Metocean Buoy	53° 35.23' N	01° 16.95' E
Seabed Frame	53° 37.47' N	01° 24.90' E

For any further information please contact :

Name : Luis MCARTHUR (Survey Manager)  
Telephone : +44 (0)7771 86 28 68  
Email : [luis.mcarthur@totalenergies.com](mailto:luis.mcarthur@totalenergies.com)

Name: Nick GARSIDE (Fisheries Liaison Officer)  
Telephone : + 44 (0)7538 82 70 13  
Email : [nick.garside@live.co.uk](mailto:nick.garside@live.co.uk)

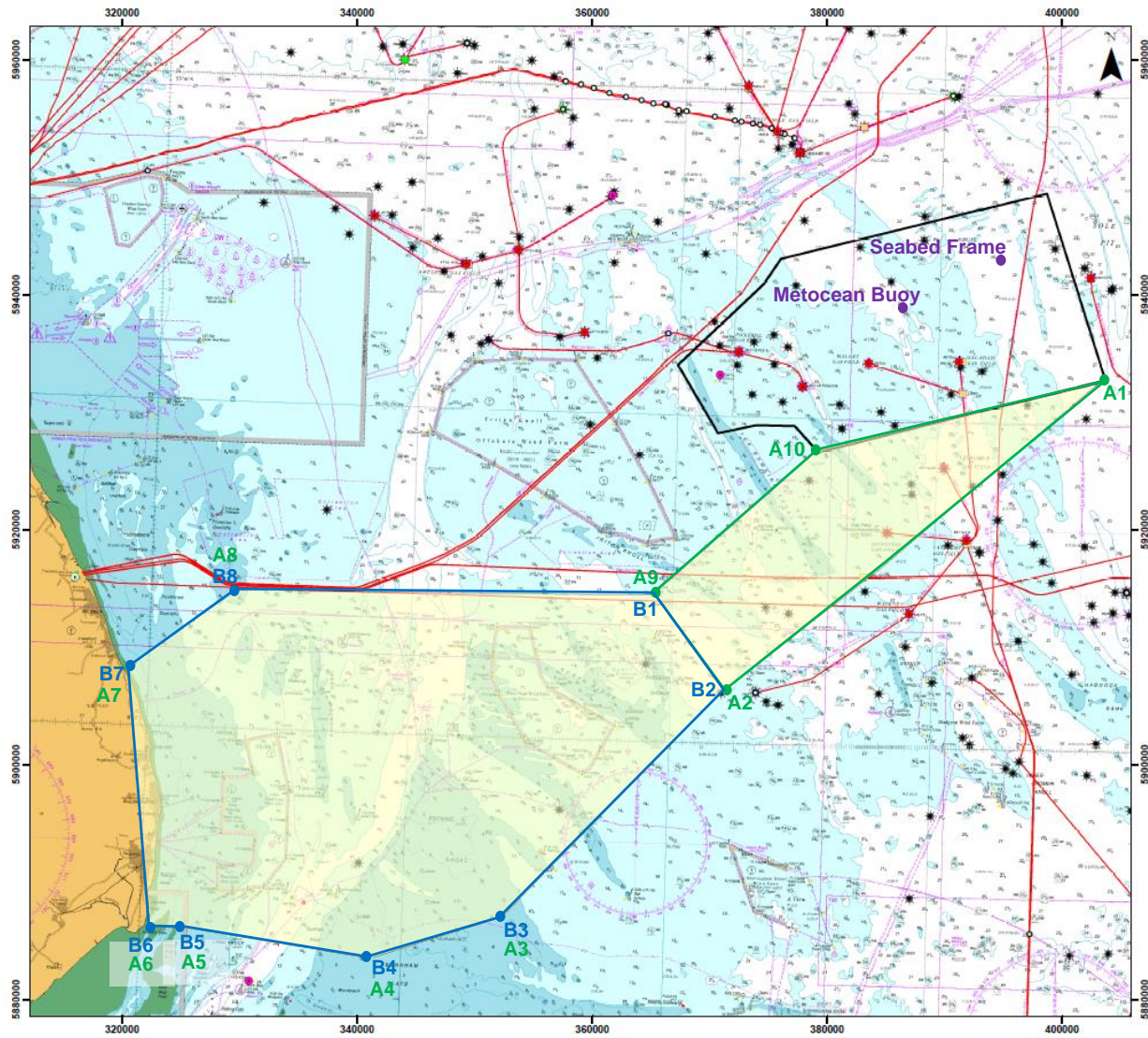


Figure 1 Area of Operations