

# NOTICE TO MARINERS

**Issue Date: 10<sup>th</sup> June 2022**

## **VIKING LINK Project**

### **HVDC Cable Laying and Burial Work**

Mariners are advised about Cable Lay and Burial works planned for the Viking Link project which is an HVDC electricity transmission interconnector between Denmark and England, a joint venture between National Grid and Energinet. The works include cable lay and burial works operations progressing offshore from the end of the previous nearshore campaign recently installed.

The works covered within this Notice to Mariners (NtMs) are divided into the following activities planned to take place from:

- Cable lay            25th June 2022– 31th July 2022
- Cable Burial        30th June 2022 – 31st August 2022

The route length of the main HVDC interconnector (2x bundles power cables + 1x Fibre Optic Cable) is in the order of 620km. The work covered by this NtM is covering the fifth campaign of 100km in length, starting from the end of the campaigns installed in 2021, covering KP range from KP462 – 362. The portion of the route within UK waters ends at KP 402.846, as per Figure 1.

The Cable Lay works are being carried out by:

**Prysmian PowerLink** using **Leonardo da Vinci** (IMO 9857315; MMSI 247415300; Call Sign IJVJ2).

The Cable Burial works are being carried out by:

**Asso.subsea** using **TSV Aethra** (IMO 9181481; MMSI 212466000; Call Sign 5BHH4) using the trenching tool AssoTrencher IV and the jetting tool AssoJet III.

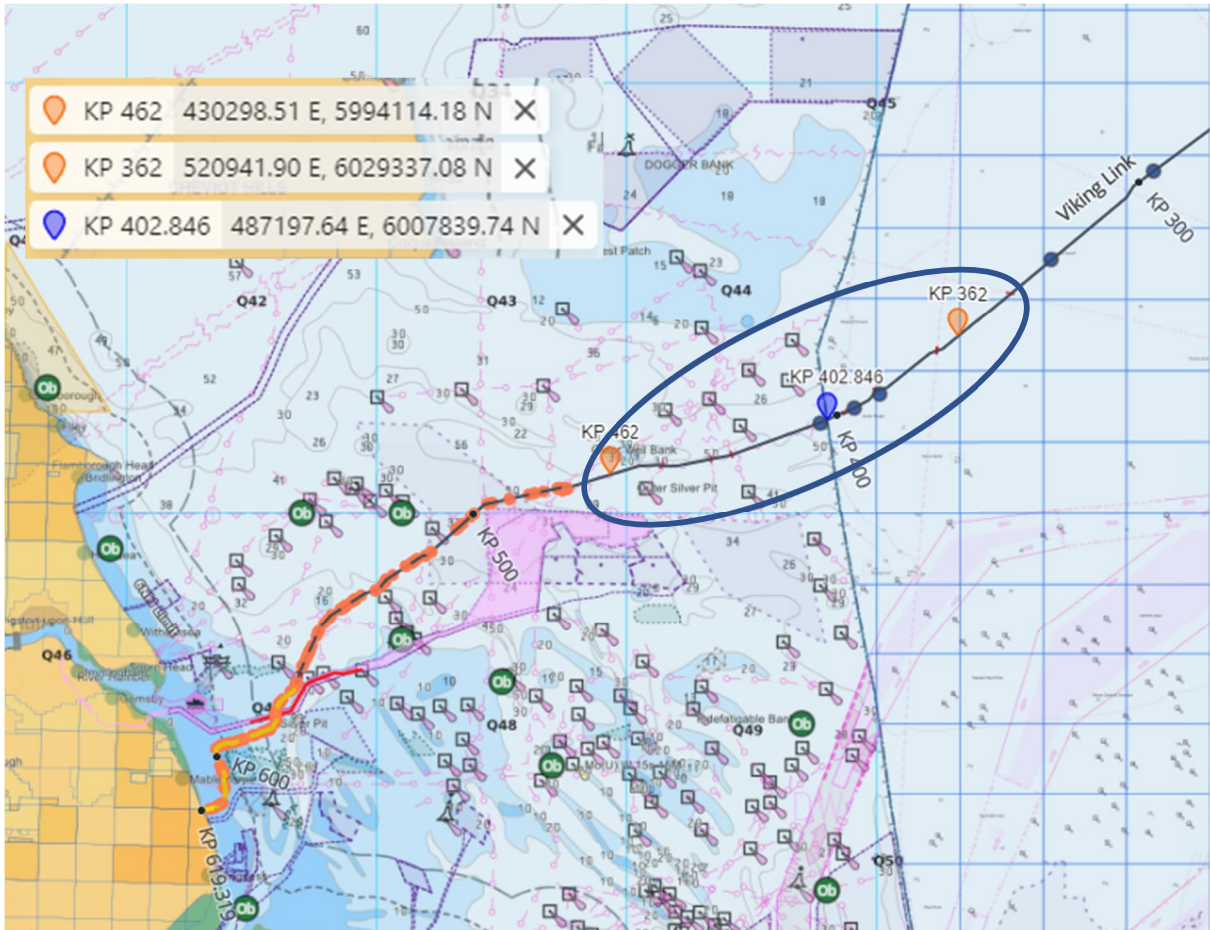
Vessels and their contact details are given in **Table 1** below.

**Vessels are requested to pass at a safe speed and distance and fishing vessels are advised to remain at a safe distance, approximately 550m (0.3 nautical miles) from the areas identified. The vessels will have restricted manoeuvrability as it completes its work scope. Deployed Guard Vessels will monitor the exposed areas of cable while burial progresses and advise of safe passing distances locally.**

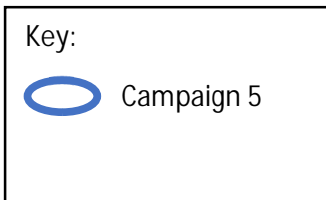
**VHF CH 16 will be monitored at all times and will be used to contact the coastguard in the event of an emergency.**

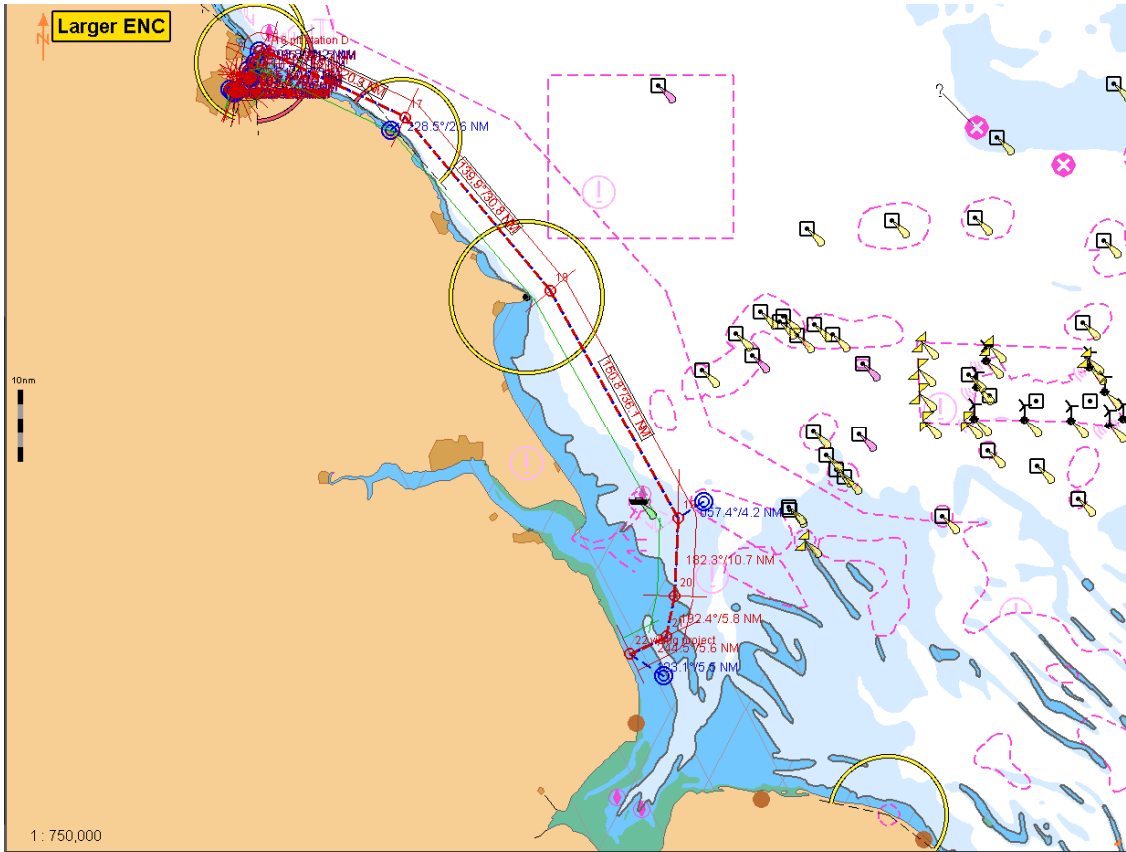
Vessel Name	Vessel Photograph		Vessel Details
Cable Lay Vessel – “Leonardo da Vinci”	 <p>© Sander Jacobsen MarineTraffic.com</p>		MMSI: 247415300 Call Sign: IJVJ2
Trenching Support Vessel – “Aethra”	 <p>© Claus Schaefer MarineTraffic.com</p> <p>Schiffsfotos@t-online.de</p>		MMSI: 212466000 Call Sign: 5BHH4

**Table 1: Work vessel details**

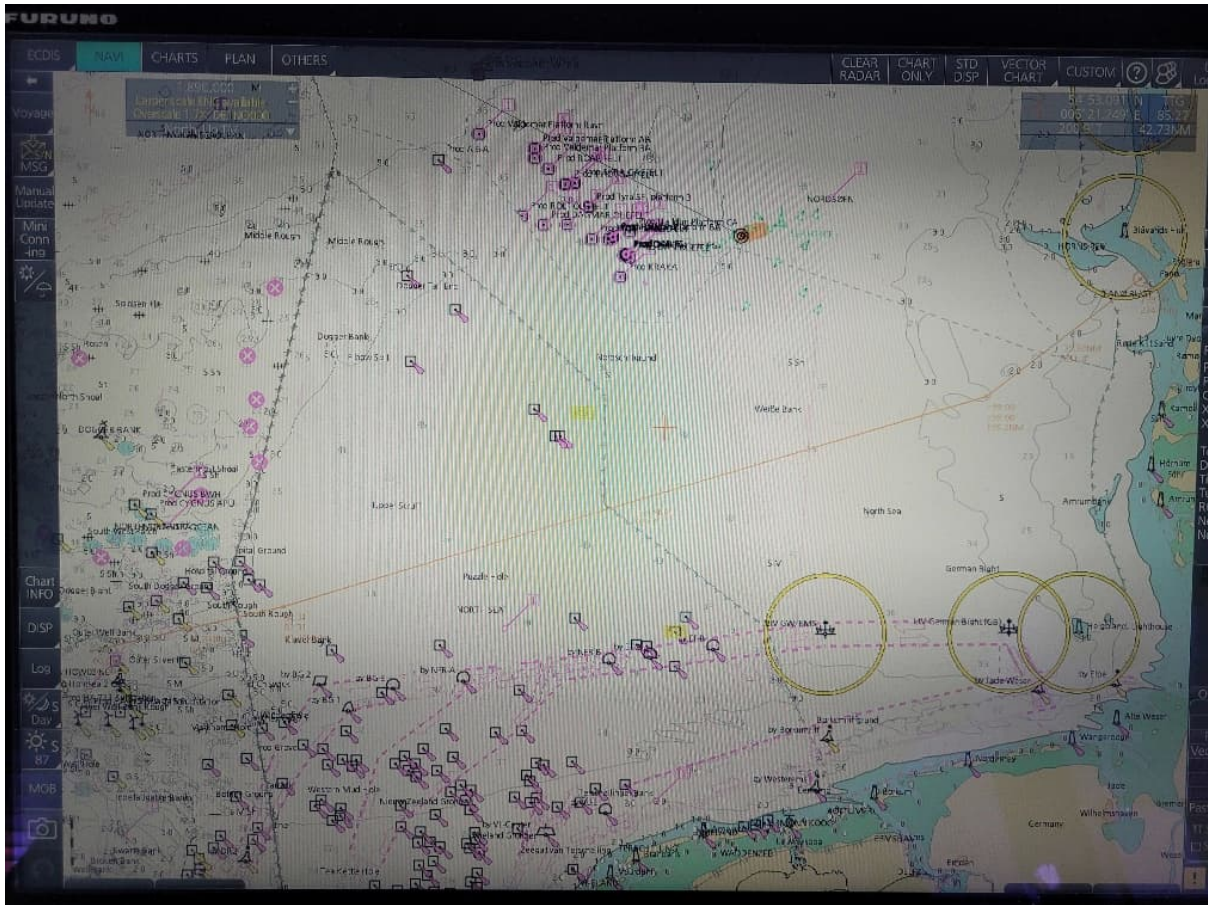


**Figure 1: Overview of the Viking Link Interconnector area of work**





**Figure 2: Leonardo da Vinci Transit Route and Passage Plan**



**Figure 3: TSV "Aethra" Transit Route and Passage Plan**

## Works overview

Following completion of the first two campaigns, the Cable Laying vessel Leonardo da Vinci will join the Campaign 5 cable with the previously installed Campaign 1 & 2 cable and then surface lay the Campaign 5 cable on the seabed along the HVDC cable route, detailed in Figure 1. In periods while the cable is exposed on the seabed prior to cable protection, guard vessels will be stationed to monitor the cable and provide advice to mariners.

Cable burial will follow soon after the cable lay operations, carried out by the vessel Aethra.

Where cable burial is not possible (due to service crossings, etc), guard vessels will remain on site.

## Service crossing

As part of the fifth campaign the Viking Link HVDC cable crosses 7 existing service crossings.

While awaiting the post lay protection operation, Guard vessels will remain in place to monitor the exposed cable.

DESCRIPTION	ETRS 1989 UTM 31N		ETRS89		WD LAT [m]
	Easting [m]	Northing [m]	Latitude	Longitude	
Schooner to Murdoch 16-inch Gas 3-inch Methanol PL	443891,41	5996304,91	54° 06.710'N	002° 08.503'E	62,6
Tampnet / Norsesea Com-1 Seg. 3 FO	456868,59	5997835,36	54° 07.610'N	002° 20.399'E	58
Ketch to Murdoch 18-inch Gas 3-inch Methanol PL	462236,46	5998896,40	54° 08.208'N	002° 25.320'E	59,2
D18a-A to D15-A 8-inch Gas 2-inch Methanol Pipeline	491583,01	6009697,89	54° 14.112'N	002° 52.252'E	54,1
D15 FA to L10 AC 36-inch Gas Pipeline	500135,84	6015228,38	54° 17.098'N	003° 00.125'E	51,7
Sleipner to Zeebrugge 40-inch Gas Pipeline (ZEEPIPE)	515666,50	6025781,15	54° 22.774'N	003° 14.472'E	42,6
Draupner to Dunkirk 42-inch Gas Pipeline (FRANPIPE)	515722,95	6025777,03	54° 22.772'N	003° 14.524'E	43,4

**Table 2: Locations for the Service Crossing**

### Contact Details:

Further enquiries should be addressed to the following contacts:

FLO contact

Jonathan Keer

[jonathan@brownmay.com](mailto:jonathan@brownmay.com)

Mobile: +44 7850 604851

Freya Sandison

[freya@brownmay.com](mailto:freya@brownmay.com)

Mobile: +44 7857 500609

Prysmian Project Manager

Alessandro Jared Crivelli

[alessandro.crivelli@prysmiangroup.com](mailto:alessandro.crivelli@prysmiangroup.com)

Mobile: +39 3454 595615

Master of Leonardo da Vinci

Master

[ldv.master@prysmiangroup.com](mailto:ldv.master@prysmiangroup.com)

Bridge Sat: 00870773272742

ASSO Offshore Team Manager

Lampros Merkouris

[lmerkouris@assogroup.com](mailto:lmerkouris@assogroup.com)

Mobile: +30 211 888 5102

Vessel Master of Aethra

[aethra@assogroup.com](mailto:aethra@assogroup.com)

Mobile: +30 694 8274 414