

LYNN AND INNER DOWSING

OFFSHORE WIND FARMS

Notice to Mariners

August 2022

Scope of Works – Major Component Replacements

Lynn and Inner Dowsing (LID) Offshore Wind Farm wish to advise mariners that the jack up vessel Seajacks Hydra is planned to re-commence works within the boundary of the wind farm on 24th August to 11th September 2022

The duration of the work scope is as planned, subject to weather conditions

The wind turbine location is as below:

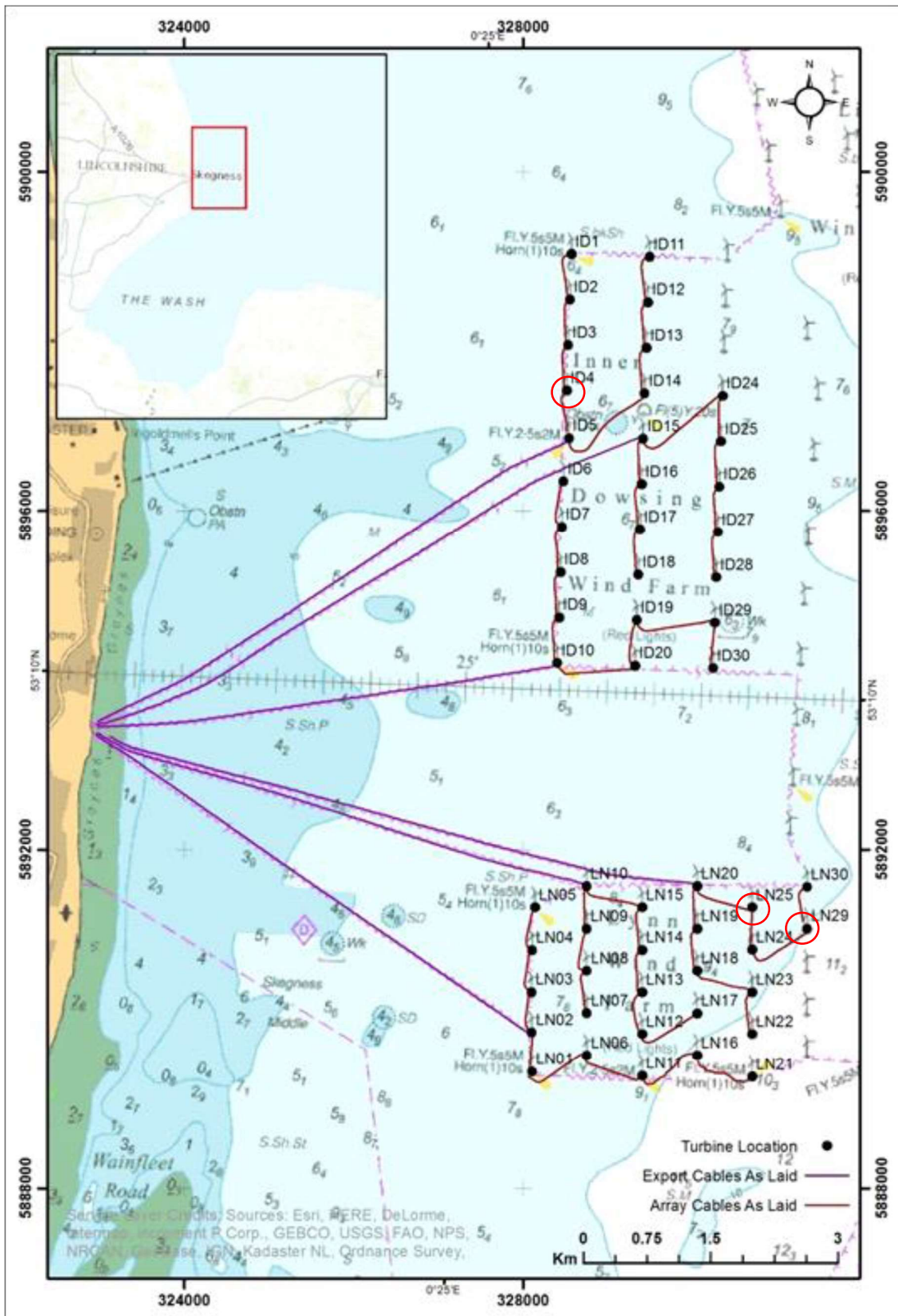
1. ID04 - Coordinates: LATITUDE - 53°11.908' N LONGITUDE - 000°25.960' E
2. LN25 - Coordinates: LATITUDE - 53°08.657' N LONGITUDE - 000°28.116' E
3. LN29 - Coordinates: LATITUDE - 53°08.535' N LONGITUDE - 000°28.707' E



Vessel Information

Name	Seajacks Hydra
Call Sign	3FE13
MMSI	370239000
Length	75m
Beam	36m

Lynn and Inner Dowsing Wind Turbine Locations



Mariners should maintain a safe distance of 500m from the Jack Up vessel when it is on station adjacent to the wind turbine.

Mariners are advised to exert caution in the vicinity of the wind farm during this time and should communicate with the Siemens Gamesa Operational Marine Controller when operating near the site.

Siemens Gamesa Operational Marine Controller

Email: LIDOpoperationalmarinecontrol@siemensgamesa.com

Tel: 01472 806851 / 07921 249544

Radio Channel: 161.175MHz

Windfarm Liaison

Mariners are also advised that Lynn and Inner Dowsing inquiries should be directed through the Site Owners Representatives – XceCo.

Phone: 01472 806860

Email: flo@xceco.co.uk