

**Notice to Mariners – 28<sup>th</sup> July 2022**

Export Cable Corridor Nearshore Geophysical Survey 2022

Outer Dowsing Offshore Wind (a joint venture between TotalEnergies and Corio Generation) are conducting a 4 month nearshore geophysical survey between the 05<sup>th</sup> May and 31<sup>st</sup> August 2022 using vessel *Marshall Art* call sign: 2EMY5. The survey vessel shall be towing a cable up to approximately 75m behind the vessel at depths of up to 3m below sea level. The survey vessel shall have limited maneuverability so please allow a safe distance.

Company: Outer Dowsing Offshore Wind  
 Contractor : GeoXYZ Limited  
 Survey vessel : Marshall Art  
 Survey vessel call sign: 2EMY5  
 Earliest start date: 05<sup>th</sup> May 2022  
 Latest finish date: 31<sup>st</sup> August 2022

The survey will commence in the following area (refer to Figure 1) for several weeks. As the survey progresses updates will be given on the location.

<i>(Datum : WGS84)</i>		
<i>Survey Area</i>		
<b>Point</b>	<b>Latitude</b>	<b>Longitude</b>
B1	53° 21.70' N	00° 58.40' E
B2	53° 17.27' N	01° 03.78' E
B3	53° 06.76' N	00° 47.62' E
B4	53° 04.65' N	00° 37.60' E
B5	53° 05.76' N	00° 23.75' E
B6	53° 05.73' N	00° 20.80' E
B7	53° 17.63' N	00° 18.38' E
B8	53° 21.32' N	00° 26.44' E

It should be noted that the survey vessel is accompanied by a fishing vessel: *Sorrento* providing visual reconnaissance for any sea surface obstacles.

Company : Outer Dowsing Offshore Wind  
 Contractor : NFFO Services Limited  
 Support vessel : Sorrento  
 Support vessel call sign : 2XLE



---

Metoccean Survey 2022 / 2023

Outer Dowsing Offshore Wind (a joint venture between TotalEnergies and Corio Generation) are conducting a 12 month offshore Metoccean survey between 17<sup>th</sup> April 2022 and 17<sup>th</sup> April 2023. A surface buoy and a seabed frame have been moored offshore. Please allow a safe distance from the buoy and seabed frame.

Company: Outer Dowsing Offshore Wind  
Contractor : Fugro GB Marine Limited  
Earliest start date: 17<sup>th</sup> April 2022  
Latest finish date: 17<sup>th</sup> April 2023

<i>(Datum : WGS84)</i>		
<b>Point</b>	<b>Latitude</b>	<b>Longitude</b>
Metoccean Buoy	53° 35.23' N	01° 16.95' E
Seabed Frame	53° 37.47' N	01° 24.90' E

A vessel will be conducting a service & maintenance visit to the Buoy and Seabed Frame between around the 5<sup>th</sup> August. Please allow a safe distance from the vessel.

Service vessel : Arctic Hunter  
Survey vessel call sign: OUWK2

Marine Traffic & AIS Survey 2022

Outer Dowsing Offshore Wind (a joint venture between TotalEnergies and Corio Generation) shall be conducting a 14 day marine traffic & AIS survey between approximately the 30<sup>th</sup> July and 12<sup>th</sup> August 2022 using vessel *Karima* call sign: MPKV5. The survey will take place in open water up to 10 nautical miles around the area given below.

Company: Outer Dowsing Offshore Wind  
 Contractor : Anatec Limited  
 Survey vessel : Karima  
 Survey vessel call sign: MPKV5  
 Earliest start date: 30<sup>th</sup> July 2022  
 Latest finish date: 12<sup>th</sup> August 2022

<i>(Datum : WGS84)</i>		
<i>Survey Area</i>		
<b>Point</b>	<b>Latitude</b>	<b>Longitude</b>
C1	53° 32.38' N	00° 58.74' E
C2	53° 36.44' N	01° 05.62' E
C3	53° 37.74' N	01° 07.04' E
C4	53° 41.23' N	01° 28.59' E
C5	53° 31.69' N	01° 33.95' E
C6	53° 27.84' N	01° 10.62' E
C7	53° 29.09' N	01° 08.62' E
C8	53° 29.08' N	01° 06.17' E
C9	53° 28.60' N	01° 02.68' E

Ornithology Census & Tagging Survey 2022

Outer Dowsing Offshore Wind (a joint venture between TotalEnergies and Corio Generation) shall be conducting a 20 day Ornithology Census & Tagging Survey between approximately the 20<sup>th</sup> July and 10<sup>th</sup> August 2022 using vessel *Independent* call sign: MGBH7. The survey will take place in open water up to 30km around the area given below.

Company: Outer Dowsing Offshore Wind  
 Contractor : NFFO Services Limited / RSK Bioconsult  
 Survey vessel : Independent  
 Survey vessel call sign: MGBH7  
 Earliest start date: 20<sup>th</sup> July 2022  
 Latest finish date: 10<sup>th</sup> August 2022

<i>(Datum : WGS84) Survey Area</i>		
<b>Point</b>	<b>Latitude</b>	<b>Longitude</b>
C1	53° 32.38' N	00° 58.74' E
C2	53° 36.44' N	01° 05.62' E
C3	53° 37.74' N	01° 07.04' E
C4	53° 41.23' N	01° 28.59' E
C5	53° 31.69' N	01° 33.95' E
C6	53° 27.84' N	01° 10.62' E
C7	53° 29.09' N	01° 08.62' E
C8	53° 29.08' N	01° 06.17' E
C9	53° 28.60' N	01° 02.68' E

For any further information please contact :

Name : Luis MCARTHUR (Survey Manager)  
 Telephone : +44 (0)7771 86 28 68  
 Email : [luis.mcarthur@totalenergies.com](mailto:luis.mcarthur@totalenergies.com)

Name: Nick GARSIDE (Fisheries Liaison Officer)  
 Telephone : + 44 (0)7538 82 70 13  
 Email : [nick.garside@live.co.uk](mailto:nick.garside@live.co.uk)

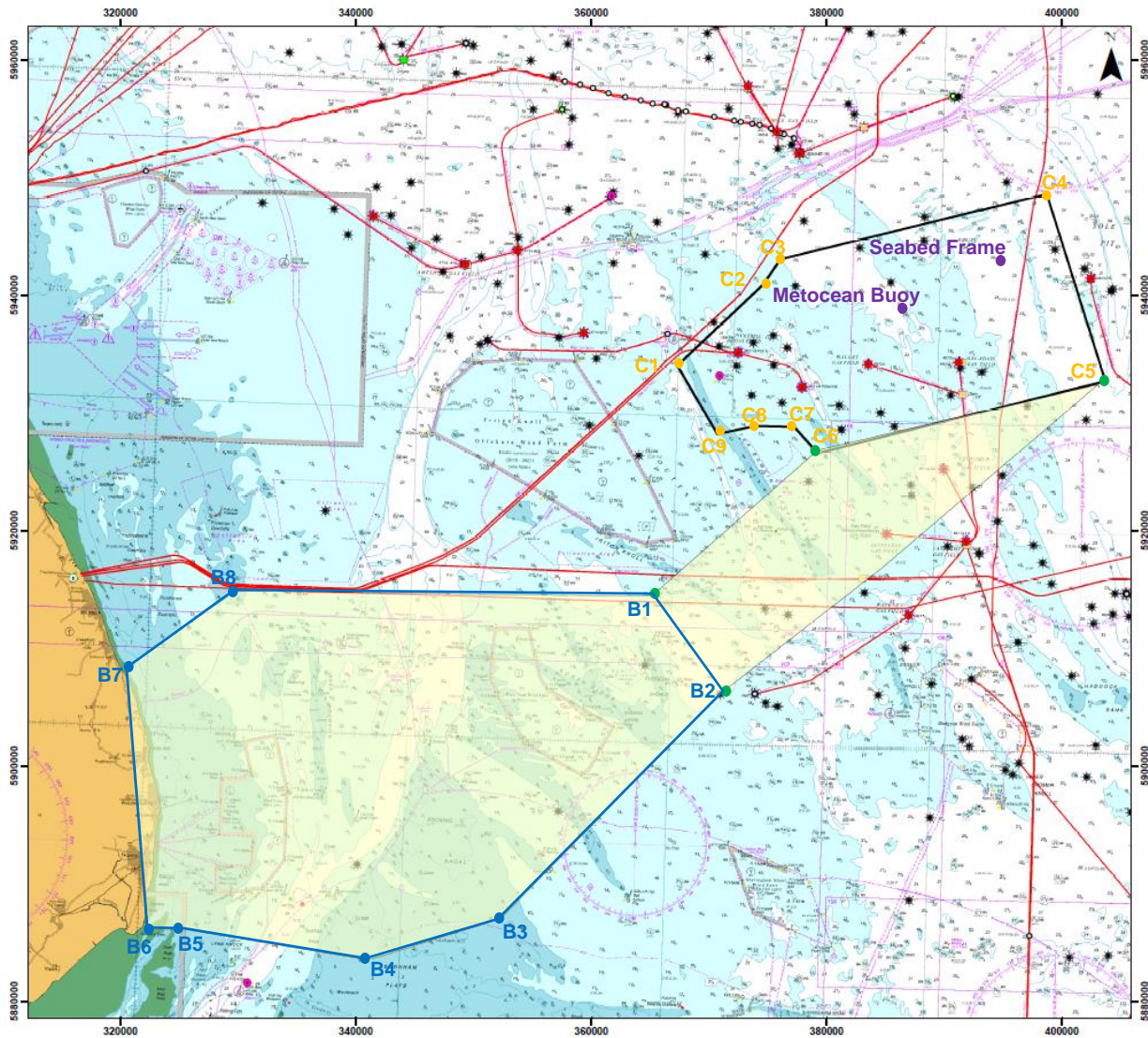


Figure 1 Area of Operations