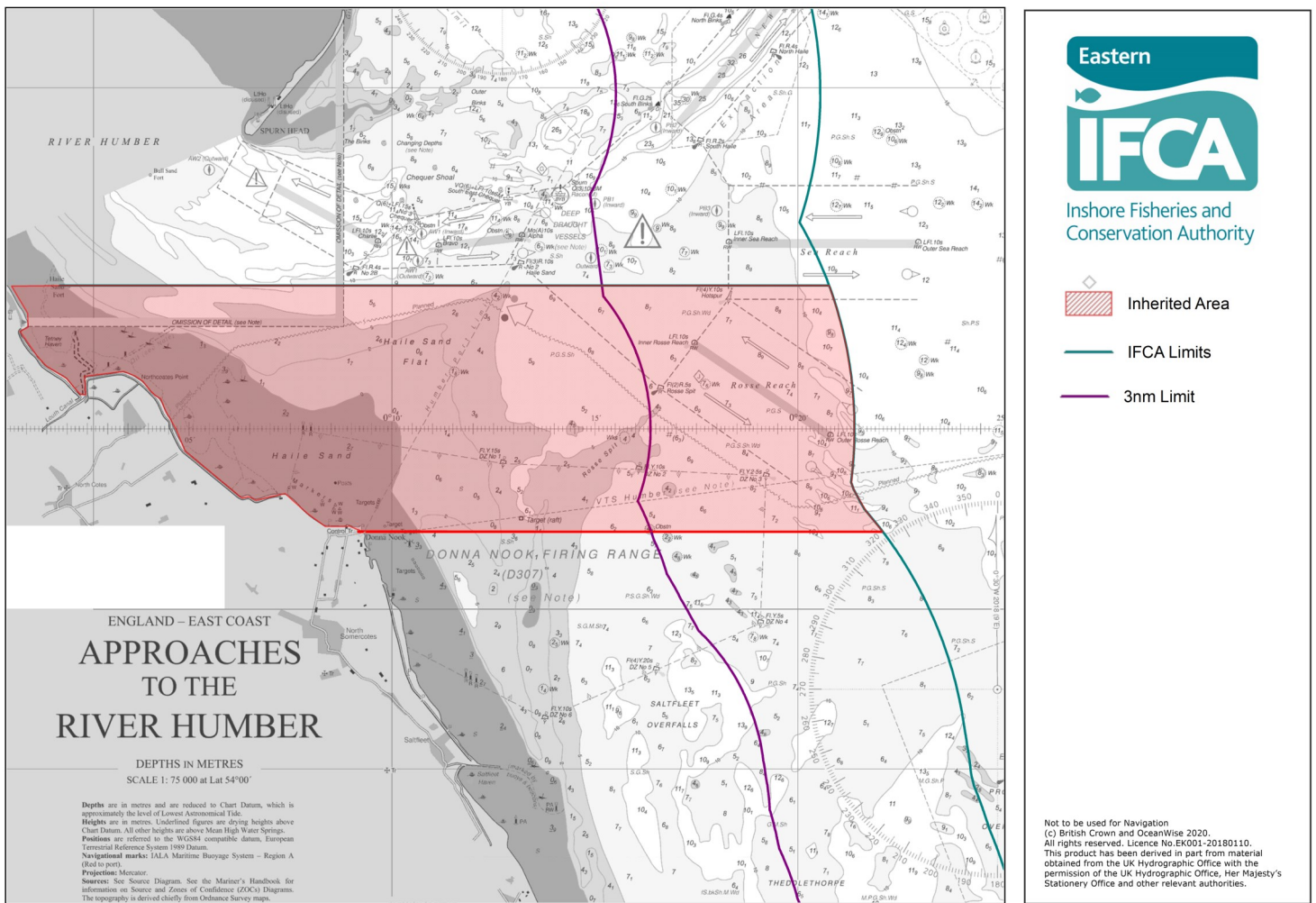


Closure: Cockles, Horseshoe Point

The Cockle fishery in Horseshoe point is closed under byelaw XXIV. The fishery has been closed for the purposes of Protection of the fishery, fishery management and control of exploitation.

No person shall, without the prior written authority of the Clerk of the Committee fish for, remove, take or disturb any cockle from a bed or part of a bed that has been closed under this byelaw. The fishery will remain closed until the 31st August 2023.

This Byelaw applies in the 'inherited area', which is illustrated on the chart below:



For further information please contact Eastern IFCA:

Eastern Inshore Fisheries and Conservation Authority
 6 North Lynn Business Village
 Bergen Way
 King's Lynn
 Norfolk PE30 2JG

Phone No: (01553) 775321;
 E-mail: mail@eastern-ifca.gov.uk

Seen something suspicious? Don't Ignore it. Report it.

Call the police on 101 or report it online:
gov.uk/report-border-crime.

To report something to Eastern IFCA out of office hours
 please call: 07748182025 or email: enforcement@eastern-ifca.gov.uk.